

Product datasheet for **RG233645**

SLC39A9 (NM_001252148) Human Tagged ORF Clone

Product data:

Product Type: Expression Plasmids
Product Name: SLC39A9 (NM_001252148) Human Tagged ORF Clone
Tag: TurboGFP
Symbol: SLC39A9
Synonyms: ZIP-9; ZIP9
Mammalian Cell Selection: Neomycin
Vector: pCMV6-AC-GFP (PS100010)
E. coli Selection: Ampicillin (100 ug/mL)
ORF Nucleotide Sequence: >RG233645 representing NM_001252148
 Red=Cloning site Blue=ORF Green=Tags(s)

TTTTGTAATACGACTCACTATAGGGCGGCCGGAATTCGTCGACTGGATCCGGTACCGAGGAGATCTGCC
 GCC**CGATCGCC**

ATGGATGATTTTCATCTCCATTAGCCTGCTGTCTCTGGCTATGTTGGTGGGATGTTACGTGGCCGGAATCA
 TTCCTTGGCTGTTAATTTCTCAGAGGAACGACTGAAGCTGGTGACTGTTTTGGGTGCTGGCCTTCTCTG
 TGGAACTGCTCTGGCAGTCATCGTGCCTGAAGGAGTACATGCCCTTATGAAGATATTCTTGAGGGAAAA
 CACCACCAAGCAAGTAAACACATAATGTGATTGCATCAGACAAAGCAGCAGAAAAATCAGTTGTCCATG
 AACATGAGCACAGCCACGACCACACACAGCTGCATGCCTATATTGGTGTTCCTCGTTCGGGCTTCGT
 TTTTCATGTTGCTGGTGGACCAGATTGGTAACTCCCATGTGCATTCTACTGACGCTGATGGTGTGCTTTG
 GGAGCAGCAGCATCTACTTCACAGACCAGTGTCCAGTTAATTGTGTTTGTGGCAATCATGCTACATAAGG
 CACCAGCTGCTTTTGGACTGGTTTCCTTCTTGATGCATGCTGGCTTAGAGCGGAATCGAATCAGAAAGCA
 CTTGCTGGTCTTTGCATTGGCAGCACCAGTTATGTCCATGGTGACATACTTAGGACTGAGTAAGAGCAGT
 AAAGAAGCCCTTTCAGAGGTGAACGCCACGGGAGTGGCCATGCTTTTCTCTGCCGGGACATTTCTTTATG
 TTGCCACAGTACATGTCTCCCTGAGGTGGCGGAATAGGGCACAGCCACAAGCCCGATGCCACGGGAGG
 GAGAGGCCCTCAGCCGCCCTGGAAGTGGCAGCCCTGGTTCTGGGTTGCCTCATCCCTCATCCTGTTCAGTA
 GGACACCAGCAT

ACGCGTACGCGGCCGCTCGAG - GFP Tag - GTTTAA



[View online »](#)

Protein Sequence: >RG233645 representing NM_001252148
 Red=Cloning site Green=Tags(s)

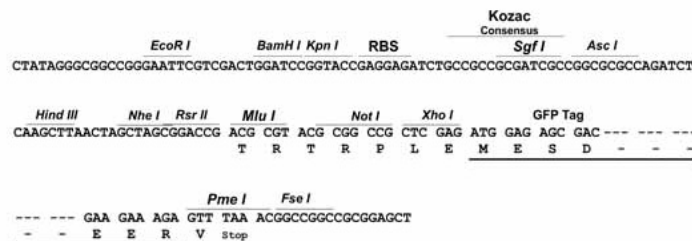
MDDFISISLLSLAMLVGCYVAGIIPLAVNFSEERLKLVTVLGAGLLCGTALAVIVPEGVHALYEDILEGK
 HHQASETHNVIASDKAAEKSVVHEHEHSHDHTQLHAYIGVSLVLFVFMLLVDQIGNSHVHSTDADGVAL
 GAAASTSQTSVQLIVFVAIMLHKAPAAFGLVSLMHAGLERNRIRKHLVFLAALPVMVMVTVLGLSKSS
 KEALSEVNATGVAMLF SAGTFLYVATVHVLPEVGGIGHSHKPDATGGRGLSRLEVAALVLGCLIPILISV
 GHQH

TRTRPLE - GFP Tag - V

Restriction Sites: SgfI-MluI

Cloning Scheme:

Cloning sites used for ORF Shuttling:



ACCN: NM_001252148

ORF Size: 852 bp

OTI Disclaimer: The molecular sequence of this clone aligns with the gene accession number as a point of reference only. However, individual transcript sequences of the same gene can differ through naturally occurring variations (e.g. polymorphisms), each with its own valid existence. This clone is substantially in agreement with the reference, but a complete review of all prevailing variants is recommended prior to use. [More info](#)

OTI Annotation: This clone was engineered to express the complete ORF with an expression tag. Expression varies depending on the nature of the gene.

Components: The ORF clone is ion-exchange column purified and shipped in a 2D barcoded Matrix tube containing 10ug of transfection-ready, dried plasmid DNA (reconstitute with 100 ul of water).

Reconstitution Method:

1. Centrifuge at 5,000xg for 5min.
2. Carefully open the tube and add 100ul of sterile water to dissolve the DNA.
3. Close the tube and incubate for 10 minutes at room temperature.
4. Briefly vortex the tube and then do a quick spin (less than 5000xg) to concentrate the liquid at the bottom.
5. Store the suspended plasmid at -20°C. The DNA is stable for at least one year from date of shipping when stored at -20°C.

RefSeq: [NM_001252148.2](#)

RefSeq Size: 5369 bp

RefSeq ORF: 855 bp

Locus ID: 55334

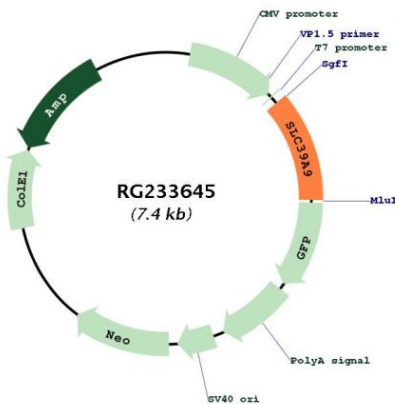
UniProt ID: [Q9NUM3](#)

Cytogenetics: 14q24.1

Protein Families: Transmembrane

Gene Summary: May act as a zinc-influx transporter.[UniProtKB/Swiss-Prot Function]

Product images:



Circular map for RG233645