

## Product datasheet for **RG233626**

### IGFBP7 (NM\_001253835) Human Tagged ORF Clone

#### Product data:

Product Type:	Expression Plasmids
Product Name:	IGFBP7 (NM_001253835) Human Tagged ORF Clone
Tag:	TurboGFP
Symbol:	IGFBP7
Synonyms:	AGM; FSTL2; IBP-7; IGFBP-7; IGFBP-7v; IGFBPRP1; MAC25; PSF; RAMSVPS; TAF
Mammalian Cell Selection:	Neomycin
Vector:	pCMV6-AC-GFP (PS100010)
E. coli Selection:	Ampicillin (100 ug/mL)
ORF Nucleotide Sequence:	>RG233626 representing NM_001253835 Red=Cloning site Blue=ORF Green=Tags(s)

TTTTGTAATACGACTCACTATAGGGCGGCCGGAATTCGTCGACTGGATCCGGTACCGAGGAGATCTGCC  
GCC**CGATCGCC**

ATGGAGCGGCCGTCGCTGCGCGCCCTGCTCCTCGGCGCCGCTGGGCTGCTGCTCCTGCTCCTGCCCTCT  
CCTCTTCTCCTTTTCGGACACCTGCGGCCCTGCGAGCCGGCTCCTGCCCGCCCTGCCCGGCTGGG  
CTGCCTGCTGGGCGAGACCCGCGACGCGTGCCTGCTGCCCTATGTGCGCCCGGGCGAGGGCGAGCCG  
TGC GG GGTGGCGGCCCGGCAGGGGGTACTGCGCGCCGGCATGGAGTGCCTGAAGAGCCGCAAGAGGC  
GGAAGGGTAAAGCCGGGCGAGCAGCCGGCGGTCCGGGTGAAGCGCGTGTGCGTGTGAAGAGCCGCTA  
CCCGGTGTGCGGAGCGACGCGCACCACTACCCGAGCGGCTGCCAGCTGCGCGCCGCCAGCCAGAGGGCC  
GAGAGCCGCGGGGAGAAGGCCATCACCCAGGTCAGCAAGGGCACCTGCGAGCAAGGTCCTTCCATAGTGA  
CGCCCCCAAGGACATCTGGAATGTCACTGGTCCAGGTGACTTGAGCTGTGAGGTCATCGGAATCCC  
GACACCTGTCTCATCTGGAACAAGGTAAGGGGTCCTATGGAGTTCAAAGGACAGAAGCTCTGCTCCT  
GGTGACCGGGACAACCTGGCCATTCAGACCCGGGTGGCCAGAAAAGCATGAAGTAACTGGCTGGGTGC  
TGGTATCTCCTCTAAGTAAGGAAGATGCTGGAGAATATGAGTGCCATGCATCCAATCCCAAGGACAGGC  
TTCAGCATCAGCAAAAATTACAGTGGTTGATGCCTTACATGAAATACCAGTGAAGGATACACAA

AC**GGGCCGCTCGAG** - GFP Tag - GTTTAA



[View online »](#)

**Protein Sequence:** >RG233626 representing NM\_001253835  
 Red=Cloning site Green=Tags(s)

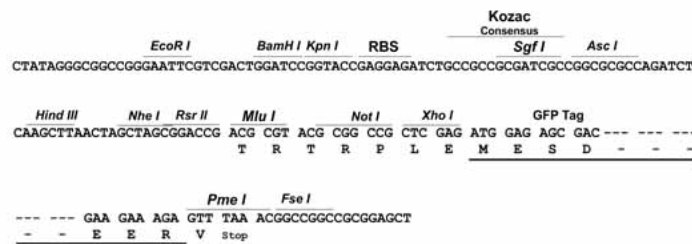
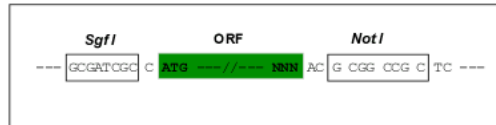
MERPSLRALLLGAAGLLLLLPLSSSSSDTCGPCEPASCPLPPLGCLLGETRDACGCCPMCARGEGEP  
 CGGGGAGRGYCAPGMECVKSRKRRKKGAGAAAGPGVSGVCVCKSRYPVCGSDGTTYPSCQLRAASQRA  
 ESRGEKAITQVSKGTCEQGPSIVTPPKDIWNVGTGAQVYLSCEVIGIPTPVLINWVYKRGHYGVQRTELLP  
 GDRDNLAIQTRGGPEKHEVTGWVLSPLSKEDAGEYECHASNSQGGASASAKITVVDALHEIPVKKGTQ

TRPLE - GFP Tag - V

**Restriction Sites:** SgfI-NotI

**Cloning Scheme:**

Cloning sites used for ORF Shuttling:



**ACCN:** NM\_001253835

**ORF Size:** 837 bp

**OTI Disclaimer:** The molecular sequence of this clone aligns with the gene accession number as a point of reference only. However, individual transcript sequences of the same gene can differ through naturally occurring variations (e.g. polymorphisms), each with its own valid existence. This clone is substantially in agreement with the reference, but a complete review of all prevailing variants is recommended prior to use. [More info](#)

**OTI Annotation:** This clone was engineered to express the complete ORF with an expression tag. Expression varies depending on the nature of the gene.

**Components:** The ORF clone is ion-exchange column purified and shipped in a 2D barcoded Matrix tube containing 10ug of transfection-ready, dried plasmid DNA (reconstitute with 100 ul of water).

**Reconstitution Method:**

1. Centrifuge at 5,000xg for 5min.
2. Carefully open the tube and add 100ul of sterile water to dissolve the DNA.
3. Close the tube and incubate for 10 minutes at room temperature.
4. Briefly vortex the tube and then do a quick spin (less than 5000xg) to concentrate the liquid at the bottom.
5. Store the suspended plasmid at -20°C. The DNA is stable for at least one year from date of shipping when stored at -20°C.

**RefSeq:** [NM\\_001253835.1](#), [NP\\_001240764.1](#)

**RefSeq Size:** 1051 bp

**RefSeq ORF:** 840 bp

**Locus ID:** 3490

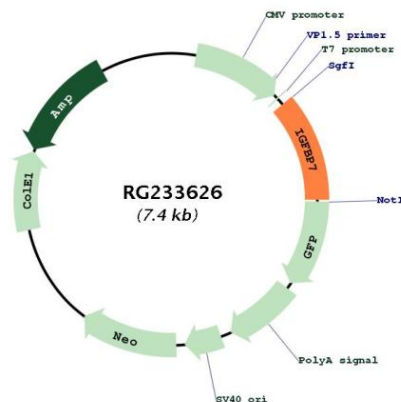
**UniProt ID:** [Q16270](#)

**Cytogenetics:** 4q12

**Protein Families:** Secreted Protein

**Gene Summary:** This gene encodes a member of the insulin-like growth factor (IGF)-binding protein (IGFBP) family. IGFBPs bind IGFs with high affinity, and regulate IGF availability in body fluids and tissues and modulate IGF binding to its receptors. This protein binds IGF-I and IGF-II with relatively low affinity, and belongs to a subfamily of low-affinity IGFBPs. It also stimulates prostacyclin production and cell adhesion. Alternatively spliced transcript variants encoding different isoforms have been described for this gene, and one variant has been associated with retinal arterial macroaneurysm (PMID:21835307). [provided by RefSeq, Dec 2011]

### Product images:



Circular map for RG233626