

## Product datasheet for **RG233623**

### EHF (NM\_001206615) Human Tagged ORF Clone

#### Product data:

**Product Type:** Expression Plasmids  
**Product Name:** EHF (NM\_001206615) Human Tagged ORF Clone  
**Tag:** TurboGFP  
**Symbol:** EHF  
**Synonyms:** ESE3; ESE3B; ESEJ  
**Mammalian Cell Selection:** Neomycin  
**Vector:** pCMV6-AC-GFP (PS100010)  
**E. coli Selection:** Ampicillin (100 ug/mL)  
**ORF Nucleotide Sequence:** >RG233623 representing NM\_001206615  
Red=Cloning site Blue=ORF Green=Tags(s)

TTTTGTAATACGACTCACTATAGGGCGGCCGGAATTCGTCGACTGGATCCGGTACCGAGGAGATCTGCC  
GCC**CGATCGCC**

ATGATTCTGGAAGGAGGTGGTGAATGAATCTCAACCCCGCAACAACCTCCTTCACCAGCCGCCAGCCT  
GGACAGACAGCTACTCCACGTGCAATGTTCCAGTGGGTTTTTTGGAGGCCAGTGGCATGAAATTCATCC  
TCAGTACTGGACCAAGTACCAGGTGTGGGAGTGGCTCCAGCACCTCCTGGACCAACCAGCTGGATGCC  
AATTGTATCCCTTTCCAAGAGTTCGACATCAACGGCGAGCACCTCTGCAGCATGAGTTTGCAGGAGTTCA  
CCCGGGCGGCAGGGACGGCGGGCAGCTCCTCTACAGCAACTTGCAGCATCTGAAGTGGAAACGGCCAGTG  
CAGTAGTGACCTGTTCCAGTCCACACACAATGTCATTGTCAAGACTGAACAACTGAGCCTTCCATCATG  
AACACCTGGAAAGACGAGAACTATTTATATGACACCAACTATGGTAGCACAGTAGCAGAGTACCTGATA  
TGAAAAAGGAGCAAGACCCCTGCCAAGTGCCACACCAAAAAGCACAACCCGAGAGGGACTCACTTATG  
GGAATTCATCCGCGACATCCTCTTGAACCCAGACAAGAACCAGGATTAATAAAATGGGAAGACCGATCT  
GAGGGCGTCTTCAGGTTCTTGAATCAGAGGCAGTGGCTCAGCTATGGGGTAAAAAGAAGAACAACGCA  
GCATGACCTATGAAAAGCTCAGCCGAGCTATGAGATATTACTACAAAAGAGAAATTTCTGGAGCGTGTGGA  
TGGACGAAGACTGGTATATAAATTTGGGAAGAATGCCCGAGGATGGAGAGAAAATGAAAAC

ACGCGTACGCGGCCGCTCGAG - GFP Tag - GTTTAA



[View online »](#)

**Protein Sequence:** >RG233623 representing NM\_001206615  
Red=Cloning site Green=Tags(s)

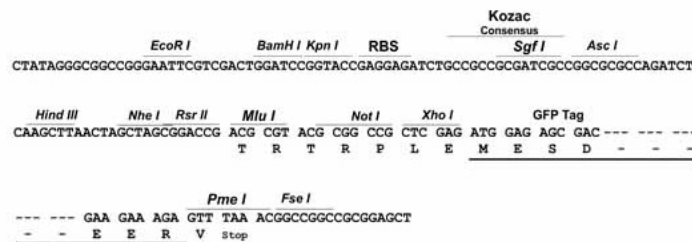
MILEGGGVMLNPGNNLLHQPPAWTDSYSTCNVSSGFFGGQWHEIHPQYWTKYQVWEWLQHLLDTNQLDA  
 NCIPFQEFDINGEHLCSMSLQEFTRAAGTAGQLLYSNLQHLKWNQCSSLDFQSTHNIVKTEQTEPSIM  
 NTWKDENLYDNYGSTVAESPDMMKKEQDPPAKCHTKKHNPGRGTHLWEFIRDILLNPDKNPGLIKWEDRS  
 EGVFRFLKSEAVAQLWGKKNNSSMTYEKLSRAMRYYYKREILERVDRRLVYKFGKNARGWRENEN

TRTRPLE - GFP Tag - V

**Restriction Sites:** SgfI-MluI

**Cloning Scheme:**

Cloning sites used for ORF Shutting:



**ACCN:** NM\_001206615

**ORF Size:** 831 bp

**OTI Disclaimer:** The molecular sequence of this clone aligns with the gene accession number as a point of reference only. However, individual transcript sequences of the same gene can differ through naturally occurring variations (e.g. polymorphisms), each with its own valid existence. This clone is substantially in agreement with the reference, but a complete review of all prevailing variants is recommended prior to use. [More info](#)

**OTI Annotation:** This clone was engineered to express the complete ORF with an expression tag. Expression varies depending on the nature of the gene.

**Components:** The ORF clone is ion-exchange column purified and shipped in a 2D barcoded Matrix tube containing 10ug of transfection-ready, dried plasmid DNA (reconstitute with 100 ul of water).

**Reconstitution Method:**

1. Centrifuge at 5,000xg for 5min.
2. Carefully open the tube and add 100ul of sterile water to dissolve the DNA.
3. Close the tube and incubate for 10 minutes at room temperature.
4. Briefly vortex the tube and then do a quick spin (less than 5000xg) to concentrate the liquid at the bottom.
5. Store the suspended plasmid at -20°C. The DNA is stable for at least one year from date of shipping when stored at -20°C.

**RefSeq:** [NM\\_001206615.2](#)

**RefSeq Size:** 5397 bp

**RefSeq ORF:** 834 bp

**Locus ID:** 26298

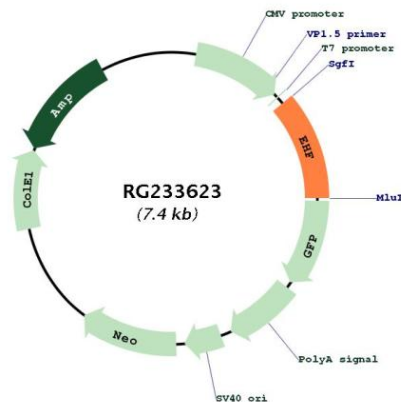
**UniProt ID:** [Q9NZC4](#)

**Cytogenetics:** 11p13

**Protein Families:** Transcription Factors

**Gene Summary:** This gene encodes a protein that belongs to an ETS transcription factor subfamily characterized by epithelial-specific expression (ESEs). The encoded protein acts as a transcriptional repressor and may be involved in epithelial differentiation and carcinogenesis. Three transcript variants encoding different isoforms have been found for this gene. [provided by RefSeq, Jun 2011]

## Product images:



Circular map for RG233623