

Product datasheet for **RG233558**

ProDynorphin (PDYN) (NM_001190898) Human Tagged ORF Clone

Product data:

Product Type:	Expression Plasmids
Product Name:	ProDynorphin (PDYN) (NM_001190898) Human Tagged ORF Clone
Tag:	TurboGFP
Symbol:	PDYN
Synonyms:	ADCA; PENKB; SCA23
Mammalian Cell Selection:	Neomycin
Vector:	pCMV6-AC-GFP (PS100010)
E. coli Selection:	Ampicillin (100 ug/mL)
ORF Nucleotide Sequence:	>RG233558 representing NM_001190898 Red=Cloning site Blue=ORF Green=Tags(s)

TTTTGTAATACGACTCACTATAGGGCGGCCGGAATTCGTCGACTGGATCCGGTACCGAGGAGATCTGCC
GCC**CGATCGCC**

ATGGCCTGGCAGGGGCTGGTCTGGCTGCCTCCTCATGTTCCCTCCACCACAGCGGACTGCCTGT
CGCGGTGCTCCTTGTGTGCTGTAAGACCCAGGATGGTCCAAACCTATCAATCCCCTGATTTGCTCCCT
GCAATGCCAGGCTGCCCTGCTGCCCTCTGAGGAATGGGAGAGATGCCAGAGCTTTCTGTCTTTTTTCACC
CCCTCCACCCTTGGGCTCAATGACAAGGAGGACTTGGGGAGCAAGTCGGTTGGGAAGGGCCCTACAGTG
AGCTGGCCAAGCTCTCTGGGTATTCTGAAGGAGCTGGAGAAAAGCAAGTTTCTCCAAGTATCTCAAC
AAAGGAGAACACTCTGAGCAAGAGCCTGGAGGAGAAGCTCAGGGGTCTCTGACGGTTTAGGGAGGGA
GCAGAGTCTGAGCTGATGAGGGATGCCAGCTGAACGATGGTCCATGGAGACTGGCACACTCTATCTCG
CTGAGGAGGACCCCAAGGAGCAGGTCAAACGCTATGGGGGCTTTTTGCGCAAATACCCCAAGAGGAGCTC
AGAGGTGGCTGGGGAGGGGACGGGGATAGCATGGGCCATGAGGACCTGTACAAACGCTATGGGGCTTC
TTGCGGCGCATTCGTCCCAAGCTCAAGTGGGACAACAGAAGCGCTATGGCGTTTTCTCCGGCGCCAGT
TCAAGGTGGTGAATCGGCTCAGGAAGATCCGAATGCTTACTCTGGAGAGCTTTTTGATGCA

ACGCGTACGCGGCCGCTCGAG - GFP Tag - GTTTAA



[View online »](#)

Protein Sequence: >RG233558 representing NM_001190898
Red=Cloning site Green=Tags(s)

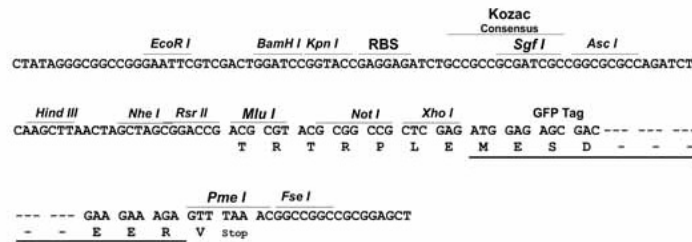
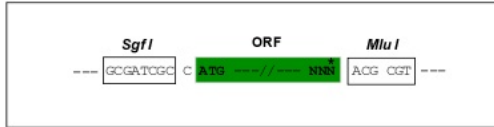
MAWQGLVLAACLMLFPSTTADCLSRCSLCAVKTQDGPKPINPLICSLQCQAALLPSEEWERCQSFLSFFT
 PSTLGLNDKEDLGSKSVGEGPYSELAKLSGSFLKELEKSKFLPSISTKENTLSKSLEEKLRGLSDGFREG
 AESELMRDAQLNDGAMETGTLYLAEEDPKEQVKRYGGFLRKYPKRSSEVAGEGDGDSMGHEDLYKRYGGF
 LRRIRPKLKWDNQKRYGGFLRRQFKVVTRSQEDPNAYSGELFDA

TRTRPLE - GFP Tag - V

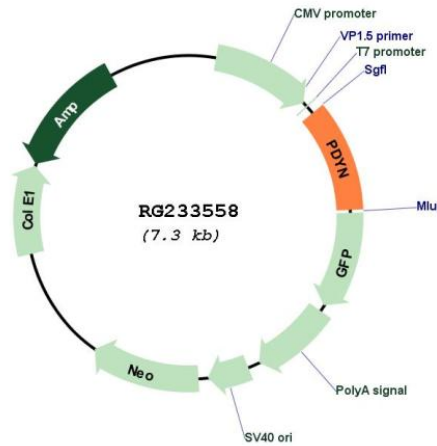
Restriction Sites: SgfI-MluI

Cloning Scheme:

Cloning sites used for ORF Shutting:



Plasmid Map:



ACCN: NM_001190898

ORF Size: 762 bp

OTI Disclaimer:	The molecular sequence of this clone aligns with the gene accession number as a point of reference only. However, individual transcript sequences of the same gene can differ through naturally occurring variations (e.g. polymorphisms), each with its own valid existence. This clone is substantially in agreement with the reference, but a complete review of all prevailing variants is recommended prior to use. More info
OTI Annotation:	This clone was engineered to express the complete ORF with an expression tag. Expression varies depending on the nature of the gene.
Components:	The ORF clone is ion-exchange column purified and shipped in a 2D barcoded Matrix tube containing 10ug of transfection-ready, dried plasmid DNA (reconstitute with 100 ul of water).
Reconstitution Method:	<ol style="list-style-type: none">1. Centrifuge at 5,000xg for 5min.2. Carefully open the tube and add 100ul of sterile water to dissolve the DNA.3. Close the tube and incubate for 10 minutes at room temperature.4. Briefly vortex the tube and then do a quick spin (less than 5000xg) to concentrate the liquid at the bottom.5. Store the suspended plasmid at -20°C. The DNA is stable for at least one year from date of shipping when stored at -20°C.
RefSeq:	NM_001190898.3
RefSeq Size:	2797 bp
RefSeq ORF:	765 bp
Locus ID:	5173
UniProt ID:	P01213
Cytogenetics:	20p13
Protein Families:	Secreted Protein
Gene Summary:	The protein encoded by this gene is a preproprotein that is proteolytically processed to form the secreted opioid peptides beta-neoendorphin, dynorphin, leu-enkephalin, rimorphin, and leumorphin. These peptides are ligands for the kappa-type of opioid receptor. Dynorphin is involved in modulating responses to several psychoactive substances, including cocaine. Multiple alternatively spliced transcript variants encoding the same protein have been found for this gene. [provided by RefSeq, Jul 2010]