

Product datasheet for **RG233556**

GABRG3 (NM_001270873) Human Tagged ORF Clone

Product data:

Product Type: Expression Plasmids
Product Name: GABRG3 (NM_001270873) Human Tagged ORF Clone
Tag: TurboGFP
Symbol: GABRG3
Mammalian Cell Selection: Neomycin
Vector: pCMV6-AC-GFP (PS100010)
E. coli Selection: Ampicillin (100 ug/mL)
ORF Nucleotide Sequence: >RG233556 representing NM_001270873
Red=Cloning site Blue=ORF Green=Tags(s)

TTTTGTAATACGACTCACTATAGGGCGGCCGGAATTCGTCGACTGGATCCGGTACCGAGGAGATCTGCC
GCCCGATCGCC

ATGGCCCCGAAGCTGCTGCTCCTCCTCTGCCTGTTCTCGGGCTTGACCGCGCGTCCAGAAAGGTGGAAG
 AGGATGAATATGAAGATTCATCATCAAACAAAAGTGGGTCTTGGCTC AAAATCCCAAGACACCGACGT
 GACTCTTATTCTCAACAAGTTGCTAAGAGAATATGATAAAAAGCTGAGGCCAGATATTGGAATAAAACCG
 ACCGTAATTGACGTTGACATTTATGTTAACAGCATTGGTCTGTGTCATCAATAAACATGGAATACCAAA
 TTGCATATTTTTGCTCAGACCTGGACAGATAGTCGCCTTCGATTCAACAGCACAATGAAAATTTCTAC
 TCTGAACAGCAACATGGTGGGTTAATCTGGATCCCAGACACCATCTCCGCAATTCTAAAACCGCAGAG
 GCTCACTGGATCACCACACCCAATCAGCTCCTCCGGATTTGGAATGACGGGAAAATCCTTTACACTTTGA
 GGCTCACCATCAATGCTGAGTGCCAGCTGCAGCTGCACAACCTCCCATGGACGAACACTCCTGCCCGCT
 GATTTTCTCCAGCTATGGCTATCCCAAAGAAGAAATGATTTATAGATGGAGAAAAAATTCAGTGGAGGCA
 GCTGACCAGAAATCATGGCGGCTTTATCAGTTTGACTTCATGGGCCTCAGAAACACCACAGAAATCGTGA
 CAACGTCTGCAGGTAGGAATTTACTGAAAGAGGCACAGCTCTCAAAGCCAGAGAGGCC

ACGCGTACGCGGCCGCTCGAG - GFP Tag - GTTTAA

Protein Sequence: >RG233556 representing NM_001270873
Red=Cloning site Green=Tags(s)

MAPKLLLLLCLFSGLHARSRKVEEYEDSSSNQKWLAPKSQDVTLLLNKLLREYDKKLRPDIGIKP
 TVIDVDIYVNSIGPVSSINMEYQIDIFFAQTWDSRLRFNSTMKILTLNSNMVGLIWIPDTIFRNSKTAE
 AHWITTPNQLLRIWNDGKILYTLRLTINAECQLQLHNFPMDEHSCPLIFSSYGYPKKEEMIYRWRKNSVEA
 ADQKSWRLYQDFMGLRNTTEIVTTSAGRNLKKAQLSKAREA

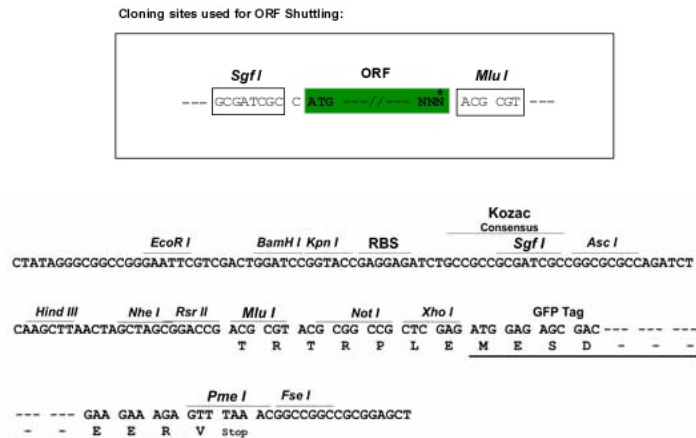
TRTRPLE - GFP Tag - V



[View online »](#)

Restriction Sites: SgfI-MluI

Cloning Scheme:



ACCN: NM_001270873

ORF Size: 759 bp

OTI Disclaimer: The molecular sequence of this clone aligns with the gene accession number as a point of reference only. However, individual transcript sequences of the same gene can differ through naturally occurring variations (e.g. polymorphisms), each with its own valid existence. This clone is substantially in agreement with the reference, but a complete review of all prevailing variants is recommended prior to use. [More info](#)

OTI Annotation: This clone was engineered to express the complete ORF with an expression tag. Expression varies depending on the nature of the gene.

Components: The ORF clone is ion-exchange column purified and shipped in a 2D barcoded Matrix tube containing 10ug of transfection-ready, dried plasmid DNA (reconstitute with 100 ul of water).

Reconstitution Method:

1. Centrifuge at 5,000xg for 5min.
2. Carefully open the tube and add 100ul of sterile water to dissolve the DNA.
3. Close the tube and incubate for 10 minutes at room temperature.
4. Briefly vortex the tube and then do a quick spin (less than 5000xg) to concentrate the liquid at the bottom.
5. Store the suspended plasmid at -20°C. The DNA is stable for at least one year from date of shipping when stored at -20°C.

RefSeq: [NM_001270873.2](#)

RefSeq Size: 1512 bp

RefSeq ORF: 762 bp

Locus ID: 2567

UniProt ID: [Q99928](#)

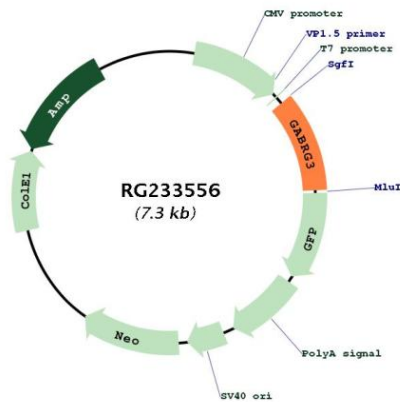
Cytogenetics: 15q12

Protein Families: Druggable Genome, Ion Channels: Cys-loop Receptors, Transmembrane

Protein Pathways: Neuroactive ligand-receptor interaction

Gene Summary: This gene encodes a gamma-aminobutyric acid (GABA) receptor. GABA is the major inhibitory neurotransmitter in the mammalian brain where it acts at GABA-A receptors, which are ligand-gated chloride channels. Chloride conductance of these channels can be modulated by agents such as benzodiazepines that bind to the GABA-A receptor. GABA-A receptors are pentameric, consisting of proteins from several subunit classes: alpha, beta, gamma, delta and rho. The protein encoded by this gene is a gamma subunit, which contains the benzodiazepine binding site. Two transcript variants encoding distinct isoforms have been found for this gene. [provided by RefSeq, Aug 2012]

Product images:



Circular map for RG233556