

Product datasheet for **RG233542**

VIP Receptor 1 (VIPR1) (NM_001251883) Human Tagged ORF Clone

Product data:

Product Type:	Expression Plasmids
Product Name:	VIP Receptor 1 (VIPR1) (NM_001251883) Human Tagged ORF Clone
Tag:	TurboGFP
Symbol:	VIP Receptor 1
Synonyms:	HVR1; II; PACAP-R-2; PACAP-R2; RDC1; V1RG; VAPC1; VIP-R-1; VIPR; VIRG; VPAC1; VPAC1R; VPCAP1R
Mammalian Cell Selection:	Neomycin
Vector:	pCMV6-AC-GFP (PS100010)
E. coli Selection:	Ampicillin (100 ug/mL)
ORF Nucleotide Sequence:	>RG233542 representing NM_001251883 Red=Cloning site Blue=ORF Green=Tags(s)

TTTTGTAATACGACTCACTATAGGGCGGCCGGAATTCGTCGACTGGATCCGGTACCGAGGAGATCTGCC
GCC**GCGATCGCC**

ATGACAAGGCAGCGAGTTTGGATGAGGTGGGCTGTAAGGCAGCCATGGTCTTTTTCCAATATTGTGTCAT
GGCTAACTTCTTCTGGCTGCTGGTGGAGGGCCTACCTGTACACCCTGCTTGCCGTCTCCTTCTCTCT
GAGCGGAAGTACTTCTGGGGGGTACCCAGCACATTCACCATGGTGTGGACCATCGCCAGGATCCATTTT
GAGGATTATGGGTGCTGGGACACCATCACTCCTCACTGTGGTGGATCATAAAGGGCCCCATCCTCACCT
CCATCTTGGTAACTTCATCCTGTTTATTTGCATCATCCGAATCCTGCTCAGAACTCGGGCCCCAGA
TATCAGGAAGAGTGACAGCAGTCCATACTCAAGGCTAGCCAGGTCCACACTCCTGCTGATCCCCCTGTTT
GGAGTACACTACATCATGTTTCGCTTCTTCCGGACAATTTAAGCCTGAAGTGAAGATGGTCTTTGAGC
TCGTCTGGGGTCTTTCCAGGGTTTGTGGTGGCTATCCTCTACTGCTTCTCAATGGTGAAGTGCAGGC
GGAGCTGAGGCGGAAGTGGCGGCCTGGCACCTGCAGGGCGTCTGGGCTGGAACCCCAAATACCGGCAC
CCGTCGGGAGGCAGCAACGGCGCCACGTGCAGCACGCAGGTTTCCATGCTGACCCGCGTCAGCCAGGTG
CCCGCCGCTCCTCCAGCTTCCAAGCCGAAGTCTCCCTGGT

ACGCGTACGCGGCCGCTCGAG - GFP Tag - GTTTAA



[View online »](#)

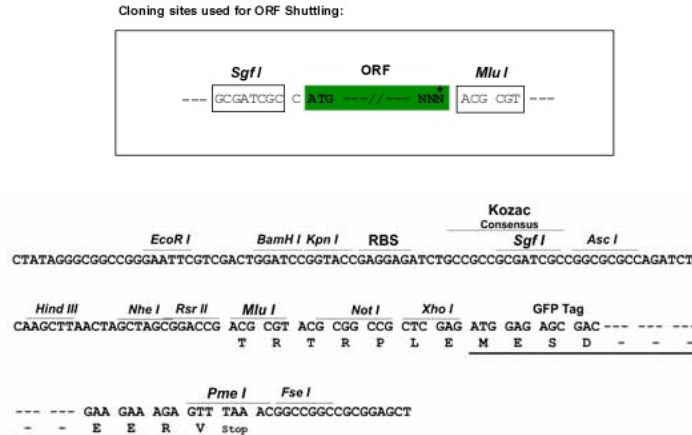
Protein Sequence: >RG233542 representing NM_001251883
 Red=Cloning site Green=Tags(s)

MTRQRVWMRWAVRQPWFSNIVSWLTSSGCWWRSTCTPCLPSPSSLSGSTSGGVPSTFTMVWTIARIHF
 EDYGCWDTINSSLWWI IKGPI L TSILVNFILFICIRILLQKL RPPDIRKSDSSPYSLARSTLLL IPLF
 GVHYIMFAFFPDNFKPEVKMVFELVVG SFQGFVVA ILYCF LNGEVQAE LRRKWRRWHLQGV L GWNPKYRH
 PSGGSNGATCSTQV SML TRVSPGARRSSSFQAEVSLV

TRTRPLE - GFP Tag - V

Restriction Sites: SgfI-MluI

Cloning Scheme:



ACCN: NM_001251883

ORF Size: 741 bp

OTI Disclaimer: The molecular sequence of this clone aligns with the gene accession number as a point of reference only. However, individual transcript sequences of the same gene can differ through naturally occurring variations (e.g. polymorphisms), each with its own valid existence. This clone is substantially in agreement with the reference, but a complete review of all prevailing variants is recommended prior to use. [More info](#)

OTI Annotation: This clone was engineered to express the complete ORF with an expression tag. Expression varies depending on the nature of the gene.

Components: The ORF clone is ion-exchange column purified and shipped in a 2D barcoded Matrix tube containing 10ug of transfection-ready, dried plasmid DNA (reconstitute with 100 ul of water).

Reconstitution Method:

1. Centrifuge at 5,000xg for 5min.
2. Carefully open the tube and add 100ul of sterile water to dissolve the DNA.
3. Close the tube and incubate for 10 minutes at room temperature.
4. Briefly vortex the tube and then do a quick spin (less than 5000xg) to concentrate the liquid at the bottom.
5. Store the suspended plasmid at -20°C. The DNA is stable for at least one year from date of shipping when stored at -20°C.

RefSeq: [NM_001251883.1](#), [NP_001238812.1](#)

RefSeq Size: 2445 bp

RefSeq ORF: 744 bp

Locus ID: 7433

UniProt ID: [P32241](#)

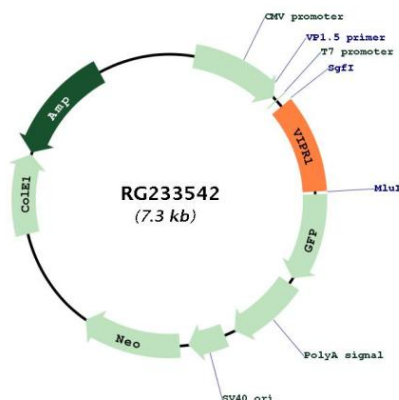
Cytogenetics: 3p22.1

Protein Families: Druggable Genome, GPCR, Transmembrane

Protein Pathways: Neuroactive ligand-receptor interaction

Gene Summary: This gene encodes a receptor for vasoactive intestinal peptide, a small neuropeptide. Vasoactive intestinal peptide is involved in smooth muscle relaxation, exocrine and endocrine secretion, and water and ion flux in lung and intestinal epithelia. Its actions are effected through integral membrane receptors associated with a guanine nucleotide binding protein which activates adenylate cyclase. Several transcript variants encoding different isoforms have been found for this gene. [provided by RefSeq, Oct 2011]

Product images:



Circular map for RG233542