

## Product datasheet for **RG233537**

### STX10 (NM\_001271610) Human Tagged ORF Clone

#### Product data:

Product Type:	Expression Plasmids
Product Name:	STX10 (NM_001271610) Human Tagged ORF Clone
Tag:	TurboGFP
Symbol:	STX10
Synonyms:	hsyn10; SYN10
Mammalian Cell Selection:	Neomycin
Vector:	pCMV6-AC-GFP (PS100010)
E. coli Selection:	Ampicillin (100 ug/mL)
ORF Nucleotide Sequence:	>RG233537 representing NM_001271610 Red=Cloning site Blue=ORF Green=Tags(s)

TTTTGTAATACGACTCACTATAGGGCGGCCGGAATTCGTCGACTGGATCCGGTACCGAGGAGATCTGCC  
GCC**CGATCGCC**

ATGTCTCTCGAAGACCCCTTTTTGTAGTCCGAGGCGAGGTGCAGAAGGCGGTGAACACGGCCCGGGC  
TGTACCAGCGCTGGTGCAGCTCCTGCAGGAAAGCGGGCGGTCCGACGCGAGGAGCTGGACTGGACGAC  
CAATGAGCTGCGAATGGCCTGCGCAGCATCGAGTGGACCTCGAGGACCTGGAAGAGACCATCGGTATA  
GTGGAAGCCAACCCAGGCAAGTTCAAGCTCCCAGCCGGGACCTGCAGGAGAGAAAGGTGTTCTGGAGAG  
GGATGCGAGAGGCAGTCCAGGAAATGAAGGACCATATGGTCAGCCCAACAGCCGTAGCATTGTTGGAGAG  
GAATAACAGAGAGATACTCGCAGGCAAGCCAGCTGCCAGAAAGTACCCAGCGACCTGCTGGATGCCAGC  
GCAGTCTCGGCCACATCTCGCTACATCGAGGAGCAGCAGGCCACACAGCAGCTGATCATGGATGAACAGG  
ATCAACAGCTGGAGATGGTGTCTGGGAGCATCCAGTTCTGAAGCACATGTCCGGCCGCGTTGGAGAAGA  
GCTGGACGAGCAGGGCATCATGCTGGATGCCTTCGCCAAGAGATGGACCACACCCAGTCCCGCATGGAC  
GGGTCTCAGGAAGTTGGCCAAAGTATCCACATGACGAGTGGTGGTCCCTCAGGGGAGGGTCACT  
CTGGTGGGGCAGGTTGTAGGTGGTACCCTCTCCCG

**ACGCGT**ACGCGGCCGCTCGAG - GFP Tag - GTTTAA



[View online »](#)

**Protein Sequence:** >RG233537 representing NM\_001271610  
Red=Cloning site Green=Tags(s)

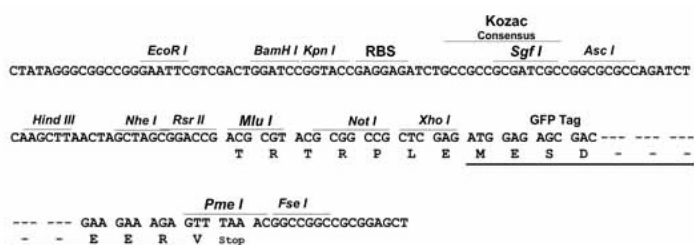
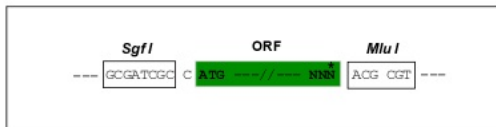
```
MSLEDPPFFVVRGEVQKAVNTARGLYQRWCELLQESA AVGREELDWTTNELRNGLRSIEWDLEDLEETIGI
VEANPGKFKLPAGDLQERKVFVERMREAVQEMKDHMSPTAVAFLENNREILAGKPA AQKSPDLLDAS
AVSATSRYIEEQATQQLIMDEQDQLEMVSGSIQVLKHMSSGRVGEELDEQGI MLDAFAQEMDHTQSRMD
GVLRLKAKVSHMTSGESPQGRGQSWWGQVVGTLSP
```

TRTRPLE - GFP Tag - V

**Restriction Sites:** SgfI-MluI

**Cloning Scheme:**

Cloning sites used for ORF Shutting:



**ACCN:** NM\_001271610

**ORF Size:** 738 bp

**OTI Disclaimer:** The molecular sequence of this clone aligns with the gene accession number as a point of reference only. However, individual transcript sequences of the same gene can differ through naturally occurring variations (e.g. polymorphisms), each with its own valid existence. This clone is substantially in agreement with the reference, but a complete review of all prevailing variants is recommended prior to use. [More info](#)

**OTI Annotation:** This clone was engineered to express the complete ORF with an expression tag. Expression varies depending on the nature of the gene.

**Components:** The ORF clone is ion-exchange column purified and shipped in a 2D barcoded Matrix tube containing 10ug of transfection-ready, dried plasmid DNA (reconstitute with 100 ul of water).

**Reconstitution Method:**

1. Centrifuge at 5,000xg for 5min.
2. Carefully open the tube and add 100ul of sterile water to dissolve the DNA.
3. Close the tube and incubate for 10 minutes at room temperature.
4. Briefly vortex the tube and then do a quick spin (less than 5000xg) to concentrate the liquid at the bottom.
5. Store the suspended plasmid at -20°C. The DNA is stable for at least one year from date of shipping when stored at -20°C.

**RefSeq:** [NM\\_001271610.2](#)

**RefSeq Size:** 1410 bp

**RefSeq ORF:** 741 bp

**Locus ID:** 8677

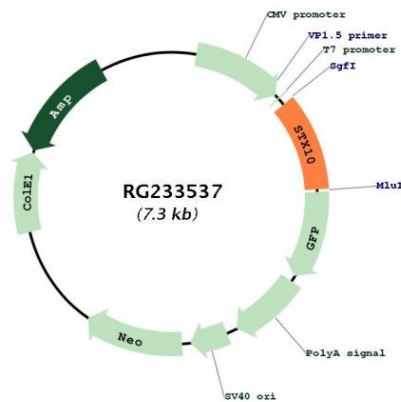
**Cytogenetics:** 19p13.13

**Protein Families:** Druggable Genome, Transmembrane

**Protein Pathways:** SNARE interactions in vesicular transport

**Gene Summary:** This gene belongs to the syntaxin family and encodes a soluble N-ethylmaleimide sensitive factor attachment protein receptor (SNARE). The encoded protein is involved in docking and fusion events at the Golgi apparatus. Alternative splicing results in multiple transcript variants. [provided by RefSeq, Oct 2012]

## Product images:



Circular map for RG233537