

Product datasheet for **RG233522**

PHOSPHO2 (NM_001199286) Human Tagged ORF Clone

Product data:

Product Type: Expression Plasmids
Product Name: PHOSPHO2 (NM_001199286) Human Tagged ORF Clone
Tag: TurboGFP
Symbol: PHOSPHO2
Mammalian Cell Selection: Neomycin
Vector: pCMV6-AC-GFP (PS100010)
E. coli Selection: Ampicillin (100 ug/mL)
ORF Nucleotide Sequence: >RG233522 representing NM_001199286
 Red=Cloning site Blue=ORF Green=Tags(s)

TTTTGTAATACGACTCACTATAGGGCGGCCGGAATTCGTCGACTGGATCCGGTACCGAGGAGATCTGCC
 GCC**CGATCGCC**

ATGAAATTTTGCTAGTTTTGACTTTGACAATACAATCATAGATGACAATAGTGACACTTGGATTGTAC
 AATGTGCTCCCAACAAAAGCTTCTATTGAACTACGTGATTCTTATCGAAAAGGATTTGGACAGAATT
 TATGGGCAGAGTCTTTAAGTATTTGGGAGATAAGGGTGTAAAGAGAATGAAATGAAAAGAGCAGTGACA
 TCATTGCCTTTCACTCCAGGGATGGTGGAACTCTCAACTTTATAAGAAAGAATAAGGATAAATTTGACT
 GCATTATTATTTAGATTCAAATTCGGTCTTCATAGATTGGTTTTAGAAGCTGCCAGTTTTATGACAT
 ATTTGATAAAGTGTTTACAAATCCAGCAGCTTTAATAGCAATGGTCATCTCACTGTTGAAAATTATCAT
 ACTCATTCTTGAATAGATGCCCAAAGAATCTTTGCAAAAAGGTAGTTTTGATAGAAATTTGATAGATAAAC
 AGTTACAACAGGGAGTGAATTATACACAAATTGTTTATTTGGTGTGGTGGAAATGATGTCTGTCCAGT
 CACCTTTTAAAGAATGATGATTTGCCATGCCACGAAAGGATATACCTTACAGAAAACCTTTCCAGA
 ATGTCTCAAAATCTTGAGCCTATGGAATATTCTGTTGTAGTTGGTCTCAGGTGTTGATATAATTTCTC
 ATTTACAATTTCTAATAAAGGAT

ACGCGTACGCGGCCGCTCGAG - GFP Tag - GTTTAA

Protein Sequence: >RG233522 representing NM_001199286
 Red=Cloning site Green=Tags(s)

MKILLVDFDNTIIDDNSDTWIVQCAPNKKLPIELRDSYRKGFWTEFMGRVFKYLGDKGVREHEMKRAVT
 SLPFTPGMVLFNFIRKNKDKFDCIIISDSNSVFDWVLEAASFHDIFDKVFTNPAAFNSNGHLTVENYH
 THSCNRCPKNLCKKVVLEIFVDKQLQQGVNYTQIVYIGDGGNDVCPVTFLLKNDVAMPKGYTLQKTLR
 MSQNLEPMEYSVVWSSGVDIISHLQFLIKD

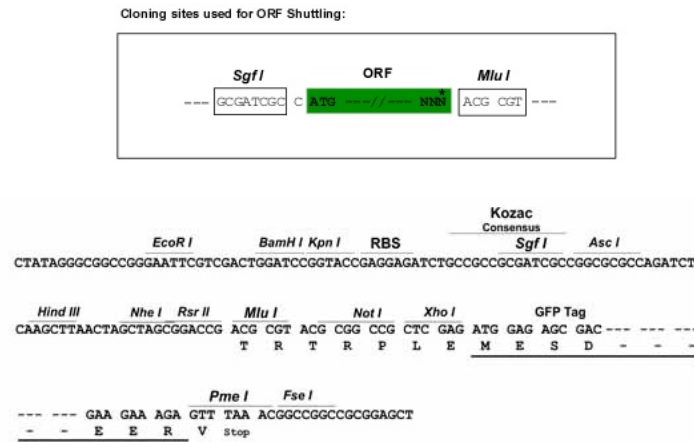
TRTRPLE - GFP Tag - V



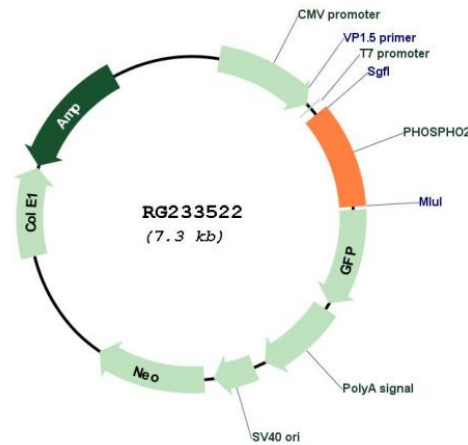
[View online »](#)

Restriction Sites: SgfI-MluI

Cloning Scheme:



Plasmid Map:



ACCN: NM_001199286

ORF Size: 723 bp

OTI Disclaimer: The molecular sequence of this clone aligns with the gene accession number as a point of reference only. However, individual transcript sequences of the same gene can differ through naturally occurring variations (e.g. polymorphisms), each with its own valid existence. This clone is substantially in agreement with the reference, but a complete review of all prevailing variants is recommended prior to use. [More info](#)

OTI Annotation: This clone was engineered to express the complete ORF with an expression tag. Expression varies depending on the nature of the gene.

Components:	The ORF clone is ion-exchange column purified and shipped in a 2D barcoded Matrix tube containing 10ug of transfection-ready, dried plasmid DNA (reconstitute with 100 ul of water).
Reconstitution Method:	<ol style="list-style-type: none">1. Centrifuge at 5,000xg for 5min.2. Carefully open the tube and add 100ul of sterile water to dissolve the DNA.3. Close the tube and incubate for 10 minutes at room temperature.4. Briefly vortex the tube and then do a quick spin (less than 5000xg) to concentrate the liquid at the bottom.5. Store the suspended plasmid at -20°C. The DNA is stable for at least one year from date of shipping when stored at -20°C.
RefSeq:	<u>NM_001199286.1, NP_001186215.1</u>
RefSeq Size:	1268 bp
RefSeq ORF:	726 bp
Locus ID:	493911
UniProt ID:	<u>Q8TCD6</u>
Cytogenetics:	2q31.1
Gene Summary:	Phosphatase that has high activity toward pyridoxal 5'-phosphate (PLP). Also active at much lower level toward pyrophosphate, phosphoethanolamine (PEA), phosphocholine (PCho), phospho-l-tyrosine, fructose-6-phosphate, p-nitrophenyl phosphate, and h-glycerophosphate. [UniProtKB/Swiss-Prot Function]