

Product datasheet for **RG233518**

RTBDN (NM_001270441) Human Tagged ORF Clone

Product data:

Product Type: Expression Plasmids
Product Name: RTBDN (NM_001270441) Human Tagged ORF Clone
Tag: TurboGFP
Symbol: RTBDN
Mammalian Cell Selection: Neomycin
Vector: pCMV6-AC-GFP (PS100010)
E. coli Selection: Ampicillin (100 ug/mL)
ORF Nucleotide Sequence: >RG233518 representing NM_001270441
Red=Cloning site Blue=ORF Green=Tags(s)

TTTTGTAATACGACTCACTATAGGGCGGCCGGAATTCGTCGACTGGATCCGGTACCGAGGAGATCTGCC
GCCCGATCGCC

ATGGCCAGGCAGCTTTATCTCAGGTGGACATGGACTGCAGGGTCCACATGCGACCCATCGGCCTGACGT
GGGTGCTGCAACTGACCTTGGCATGGATCCTGCTAGAAGCCTGTGGAGGGAGCCGCCACTCCAAGCCAG
GTCCCAGCAACACCATGGGCTGGCAGCTGATCTGGGCAAAGGCAAGCTGCACCTGGCAGGACCTTGTGT
CCCTCAGAGATGGACACAACAGAGACATCGGGCCCTGAAACCATCCAGAACGCTGTGGAGTGCCGAGCC
CTGAATGCGAATCCTTCTGGAACACCTCCAACGTGCCCTTCGAGTCGTTCCGCTCGGGCTATTGGG
GGTACGCCAGGCACAGCCGCTCTGCGAGGAGCTCTGCCAGGCTGGTTCGCCAACTGCGAAGATGATATC
ACCTGCGGCCGACTTGGCTCCCACTCTCAGAAAAAGGGGCTGTGAGCCAGCTGCCTTACCTATGGAC
AGACCTTCGACAGCGGGACGGACCTTTGTGCTCGGCTCTGGGCCAGCCCTACCGGTGGCTGCTCCTGG
AGCCCGTCACTGCTTCAACATCTCCATCTCCGCGGTACCTCGTCCAGACCAGGACGACGGGGCCGGAA
GCTCCCTCCCGGCTTCCCGCAGCCCTCGCACCTCCATCTGGACGCTGCGGGCAGCGGGAGTGGCAGTG
GAAGCGGCAGCGGCC

ACGCGTACGCGGCCGCTCGAG - GFP Tag - GTTTAA

Protein Sequence: >RG233518 representing NM_001270441
Red=Cloning site Green=Tags(s)

MARQLLSQVDMDCRVHMRPIGLTWVLQLTLAWILLEACGGSRPLQARSQQHHGLAADLGKGLHLAGPCC
PSEMDTTETSGPGNHPERCGVPSPECESFLEHLQRLRSRFRLLGVRQAQPLCEELCQAWFANCEDDI
TCGPTWLPSEKRGCEPSCLTYGQTFADGTDLCRSALGHALPVAAPGARHCFNISISAVPRPRPGRRGRE
APSRRSRSPRTSILDAAGSGSGSGSGSGP

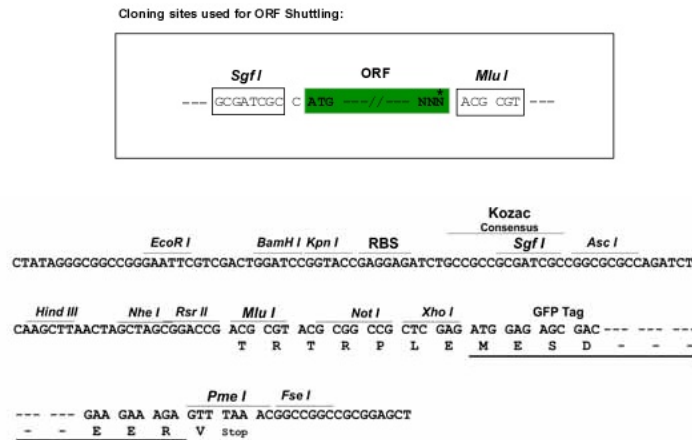
TRTRPLE - GFP Tag - V



[View online »](#)

Restriction Sites: SgfI-MluI

Cloning Scheme:



ACCN: NM_001270441

ORF Size: 717 bp

OTI Disclaimer: The molecular sequence of this clone aligns with the gene accession number as a point of reference only. However, individual transcript sequences of the same gene can differ through naturally occurring variations (e.g. polymorphisms), each with its own valid existence. This clone is substantially in agreement with the reference, but a complete review of all prevailing variants is recommended prior to use. [More info](#)

OTI Annotation: This clone was engineered to express the complete ORF with an expression tag. Expression varies depending on the nature of the gene.

Components: The ORF clone is ion-exchange column purified and shipped in a 2D barcoded Matrix tube containing 10ug of transfection-ready, dried plasmid DNA (reconstitute with 100 ul of water).

Reconstitution Method:

1. Centrifuge at 5,000xg for 5min.
2. Carefully open the tube and add 100ul of sterile water to dissolve the DNA.
3. Close the tube and incubate for 10 minutes at room temperature.
4. Briefly vortex the tube and then do a quick spin (less than 5000xg) to concentrate the liquid at the bottom.
5. Store the suspended plasmid at -20°C. The DNA is stable for at least one year from date of shipping when stored at -20°C.

RefSeq: [NM_001270441.1](#), [NP_001257370.1](#)

RefSeq Size: 1042 bp

RefSeq ORF: 690 bp

Locus ID: 83546

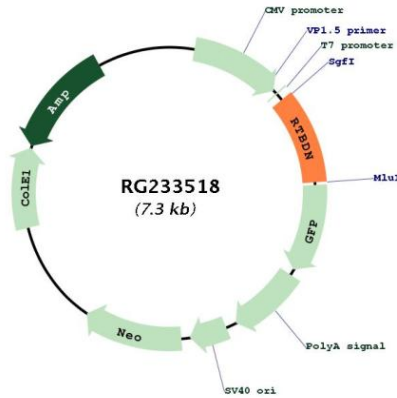
UniProt ID: [Q9BSG5](#)

Cytogenetics: 19p13.13

Protein Families: Druggable Genome, Secreted Protein

Gene Summary: This gene was first identified in a study of human eye tissues. The protein encoded by this gene is preferentially expressed in the retina and may play a role in binding retinoids and other carotenoids as it shares homology with riboflavin binding proteins. Alternative splicing results in multiple transcript variants and protein isoforms. [provided by RefSeq, Jul 2012]

Product images:



Circular map for RG233518