

Product datasheet for **RG233481**

Calumenin (CALU) (NM_001199673) Human Tagged ORF Clone

Product data:

Product Type: Expression Plasmids
Product Name: Calumenin (CALU) (NM_001199673) Human Tagged ORF Clone
Tag: TurboGFP
Symbol: Calumenin
Mammalian Cell Selection: Neomycin
Vector: pCMV6-AC-GFP (PS100010)
E. coli Selection: Ampicillin (100 ug/mL)
ORF Nucleotide Sequence: >RG233481 representing NM_001199673
Red=Cloning site Blue=ORF Green=Tags(s)

TTTTGTAATACGACTCACTATAGGGCGGCCGGAATTCGTCGACTGGATCCGGTACCGAGGAGATCTGCC
GCC**CGGATCGCC**

ATGGACCTGCGACAGTTTCTTATGTGCCTGTCCCTGTGCACAGCCTTTCCTTGAGCAAACCCACAGAAA
AGAAGGACCGGTACATCATGAGCCTCAGCTCAGTGACAAGGTTCAATGATGCTCAGAGTTTTGATTA
TGACCATGATGCCTTCTGGGTGCTGAAGAAGCAAAGACCTTTGATCAGCTGACACCAGAAGAGAGCAAG
GAAAGGCTTGGAAAGATTGTAAGTAAAAATAGATGGCGACAAGGACGGGTTTGTACTGTGGATGAGCTCA
AAGACTGGATTAATTTGCACAAAAGCGCTGGATTTACGAGGATGTAGAGCGACAGTGAAGGGGCATGA
CCTCAATGAGGACGGCCTCGTTTCTGGGAGGAGTATAAAAAATGCCACCTACGGCTACGTTTTAGATGAT
CCAGATCCTGATGATGGATTTAACTATAAACAGATGATGGTTAGAGATGAGCGGAGGTTTTAAATGGCAG
ACAAGGATGGAGACCTCATTGCCACCAAGGAGGAGTTCACAGCTTTCCTGCACCCTGAGGAGTATGACTA
CATGAAAGATATAGTAGTACAGGAAACAATGGAAGATATAGATAAGAATGCTGATGGTTTTATTGATCTA
GAAGAGTATATTGGATGGCAAGCTTACCAAGGAGGAGATCGT

ACGCGTACGCGGCCGCTCGAG - GFP Tag - GTTTAA

Protein Sequence: >RG233481 representing NM_001199673
Red=Cloning site Green=Tags(s)

MDLRQFLMCLSLCTAFALSKPTEKKDRVHHEPQLSDKVHNDASQFDYDHDAFLGAEAAKTFDQLTPEESK
ERLGKIVSKIDGDKDGFVTVDLKDVIKFAQKRWIYEDVERQWKGHDLNEDGLVSWEEYKNATYGYVLDL
PDPDDGFNYKQMMVRDERRFKMADKGDLIATKEEFTAFHLPEEYDYMKDIVVQETMEDIDKNADGFIDL
EEYIGWQAYQGDR

TRTRPLE - GFP Tag - V

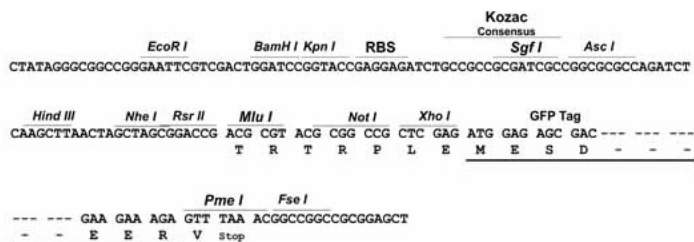
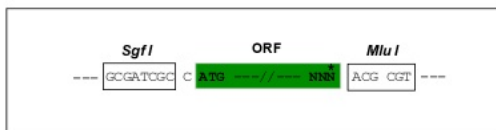


[View online »](#)

Restriction Sites: Sgfl-MluI

Cloning Scheme:

Cloning sites used for ORF Shutting:



ACCN: NM_001199673

ORF Size: 672 bp

OTI Disclaimer: The molecular sequence of this clone aligns with the gene accession number as a point of reference only. However, individual transcript sequences of the same gene can differ through naturally occurring variations (e.g. polymorphisms), each with its own valid existence. This clone is substantially in agreement with the reference, but a complete review of all prevailing variants is recommended prior to use. [More info](#)

OTI Annotation: This clone was engineered to express the complete ORF with an expression tag. Expression varies depending on the nature of the gene.

Components: The ORF clone is ion-exchange column purified and shipped in a 2D barcoded Matrix tube containing 10ug of transfection-ready, dried plasmid DNA (reconstitute with 100 ul of water).

Reconstitution Method:

1. Centrifuge at 5,000xg for 5min.
2. Carefully open the tube and add 100ul of sterile water to dissolve the DNA.
3. Close the tube and incubate for 10 minutes at room temperature.
4. Briefly vortex the tube and then do a quick spin (less than 5000xg) to concentrate the liquid at the bottom.
5. Store the suspended plasmid at -20°C. The DNA is stable for at least one year from date of shipping when stored at -20°C.

RefSeq: [NM_001199673.2](#)

RefSeq Size: 5166 bp

RefSeq ORF: 675 bp

Locus ID: 813

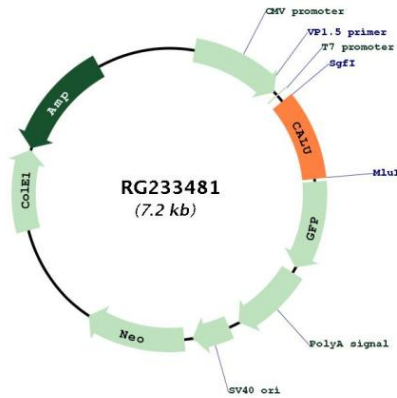
UniProt ID: [O43852](#)

Cytogenetics: 7q32.1

Protein Families: Secreted Protein

Gene Summary: The product of this gene is a calcium-binding protein localized in the endoplasmic reticulum (ER) and it is involved in such ER functions as protein folding and sorting. This protein belongs to a family of multiple EF-hand proteins (CERC) that include reticulocalbin, ERC-55, and Cab45 and the product of this gene. Alternatively spliced transcript variants encoding different isoforms have been identified. [provided by RefSeq, Oct 2008]

Product images:



Circular map for RG233481