

Product datasheet for **RG233275**

TMEM218 (NM_001258247) Human Tagged ORF Clone

Product data:

Product Type: Expression Plasmids
Product Name: TMEM218 (NM_001258247) Human Tagged ORF Clone
Tag: TurboGFP
Symbol: TMEM218
Mammalian Cell Selection: Neomycin
Vector: pCMV6-AC-GFP (PS100010)
E. coli Selection: Ampicillin (100 ug/mL)
ORF Nucleotide Sequence: >RG233275 representing NM_001258247
 Red=Cloning site Blue=ORF Green=Tags(s)

TTTTGTAATACGACTCACTATAGGGCGGCCGGAATTCGTCGACTGGATCCGGTACCGAGGAGATCTGCC
 GCC**CGATCGCC**

ATGGCTGGCACTGTGCTCGGAGTCGGTGCGGGCGTGTTTCATCTTAGCCCTGCTCTGGGTGGCAGTGCTGC
 TGCTGTGTGTGCTGTGCTCCAGAGCCTCCGGGGCGGCGAGTTCTCTGTCATTTTTTTATTCTTCGGTGC
 TGTGATCATCACATCAGTTCTGTTGCTTTCCCGCAGCTGGTGAATCCAGCCCCAGAAGTGGAAAGTT
 AAGATTGGATGACTTTTTTCATTGGCCGCTATGCTCTGCTGGCTTTCCTTAGTGCCATCTTCCTTGGAG
 GCCTCTTCTGGTTTTAATCCATTATGTTCTGGAGCCGATCTATGCCAAACCACTGCACCTCTAC

ACGCGTACGCGGCCGCTCGAG - GFP Tag - GTTTAA

Protein Sequence: >RG233275 representing NM_001258247
 Red=Cloning site Green=Tags(s)

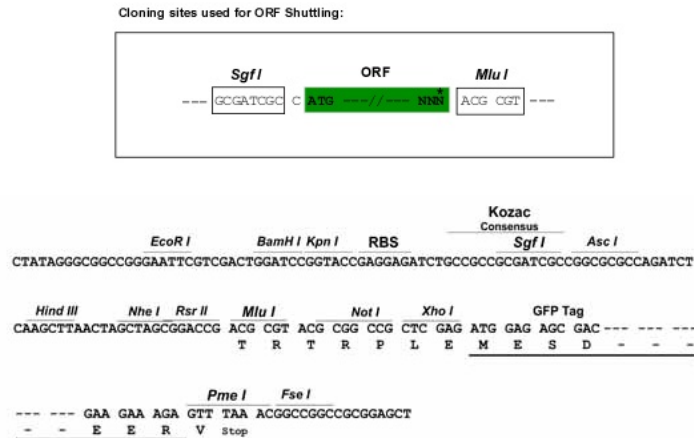
MAGTVLGVGAGVFILALLWVAVLLLCVLLSRASGAARFSVIFLFFGAVIITSVLLLFPRAGEFPAPEVEV
 KIVDDFFIGRYVLLAFLSAIFLGLFLVLIHYVLEPIYAKPLHSY

TRTRPLE - GFP Tag - V

Restriction Sites: Sgfl-MluI



[View online »](#)

Cloning Scheme:


ACCN: NM_001258247

ORF Size: 345 bp

OTI Disclaimer: The molecular sequence of this clone aligns with the gene accession number as a point of reference only. However, individual transcript sequences of the same gene can differ through naturally occurring variations (e.g. polymorphisms), each with its own valid existence. This clone is substantially in agreement with the reference, but a complete review of all prevailing variants is recommended prior to use. [More info](#)

OTI Annotation: This clone was engineered to express the complete ORF with an expression tag. Expression varies depending on the nature of the gene.

Components: The ORF clone is ion-exchange column purified and shipped in a 2D barcoded Matrix tube containing 10ug of transfection-ready, dried plasmid DNA (reconstitute with 100 ul of water).

Reconstitution Method:

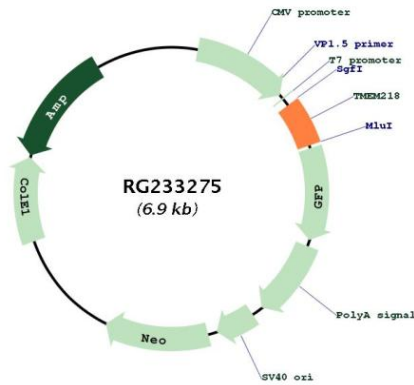
1. Centrifuge at 5,000xg for 5min.
2. Carefully open the tube and add 100ul of sterile water to dissolve the DNA.
3. Close the tube and incubate for 10 minutes at room temperature.
4. Briefly vortex the tube and then do a quick spin (less than 5000xg) to concentrate the liquid at the bottom.
5. Store the suspended plasmid at -20°C. The DNA is stable for at least one year from date of shipping when stored at -20°C.

RefSeq: [NM_001258247.2](#)

RefSeq Size: 3891 bp

RefSeq ORF: 348 bp
 Locus ID: 219854
 UniProt ID: [A2RU14](#)
 Cytogenetics: 11q24.2
 Protein Families: Transmembrane
 Gene Summary: May be involved in ciliary biogenesis or function.[UniProtKB/Swiss-Prot Function]

Product images:



Circular map for RG233275