

Product datasheet for **RG233225**

RBM15 (NM_001201545) Human Tagged ORF Clone

Product data:

Product Type:	Expression Plasmids
Product Name:	RBM15 (NM_001201545) Human Tagged ORF Clone
Tag:	TurboGFP
Symbol:	RBM15
Synonyms:	OTT; OTT1; SPEN
Mammalian Cell Selection:	Neomycin
Vector:	pCMV6-AC-GFP (PS100010)
E. coli Selection:	Ampicillin (100 ug/mL)



[View online »](#)

ORF Nucleotide Sequence:

>RG233225 representing NM_001201545
 Red=Cloning site Blue=ORF Green=Tags(s)

TTTTGTAATACGACTCACTATAGGGCGGCCGGGAATTCGTCGACTGGATCCGGTACCGAGGAGATCTGCC
 GCC**CGGATCGCC**

ATGAGGACTGCGGGGCGGGACCCTGTGCCGCGCGGAGTCCAAGATGGCGCGTGGCGTTCCGCTGTGTG
 AAACGAGCGCGGGGCGGGGTTACTCAGCTCCGCGGAGACGACCTCCGACGACCCGCAACAATGAAGGG
 AAAAGAGCGCTCGCCAGTGAAGGCCAAACGCTCCCGTGGTGGTGAAGGACTCGACTTCCCGCGGTGAGCGG
 AGCAAGAAGTTAGGGGGCTCTGGTGGCAGCAATGGGAGCAGCAGCGAAAGACCGATAGCGGCGGTGGGT
 CGCGGGGAGTCTCCACCTGGACAAGTCCAGCAGTCCGAGGTGGCAGCCGCGAGTATGATACCGGTGGGGG
 CAGCTCCAGTAGCCGCTTGCATAGTTATAGCTCCCGAGCACAAAAATCTTCGGGCGGGGGCAGTCCG
 CGCAGCAGCTCCCGGGTGGAGGCGGGGAGTACGTTCTCTGGGCGCCTCTCAGCTCCCGCGCGG
 GGGACGGCGCGGAATAACAAGACTCTGAAGATAAGCGAGTTGGGGTCCCAGCTTAGTGACGAAGCGGTGGA
 GGACGGCTGTTTCATGAGTTCAAACGCTTCGGTATGTAAGTGTGAAAAATCAGTCATCTGTCCGGTTCT
 GGACGCGGGGATGAGCGGGTAGCCTTTGTGAACCTCCGCGCGCCAGAGGACGCGCGGGCGGCCAAGCATG
 CCAGAGGCCCGCTGGTGCTCTATGACCGCCTCTGAAGATAGAAGCTGTGTATGTGAGCCGGCGCCGACG
 CCGCTCCCTTTAGACAAAGATACTTATCTCCATCAGCCAGTGTGGTGGGGCCTCTGTAGGTGGTCCAC
 CGGCACCCCTGGAGGTGGTGGAGGCCAGAGTCACTTCCCTGGTGGCGCTGCTTGGGATACAGAG
 ACTACCGCTGCAGCAGTTGGCTCTTGGCCGCTGCCCTCCACCTCCGCCACCATTGCCTCGAGACCT
 GGAGAGAGAAAGAGACTACCCGTCTATGAGAGAGTGCGCCCTGCATACAGTCTTGAAGGAGGGTGGGA
 GCTGGAGCAGGTGCTGCTCTTTCAGAGAAGTGGATGAGATTTACCCCGAGGATGATCAGCGAGCTAAC
 GGACGCTCTTCTGGGCAACCTAGACATCACTGTAACGAGAGAGTATTTAAGAAGGGCGTTGATCGCTT
 TGGAGTCATCACAGAAGTAGATATCAAGAGGCCTTCTCGCGGCCAGACTAGTACTTACGGCTTCTCAAA
 TTTGAGAACTTAGATATGTCTCACCGGGCCAAATAGCAATGTCTGGCAAATTAATTCGGAATCCTA
 TCAAAATGGTTATGGTAAAGCTACACCCACCACCCGCTCTGGGTGGGAGGCCTGGGACCTTGGTTCC
 TCTTGCTGCCCTGGCAGGAGAAATTTGATCGATTTGGCACCATACGCACCATAGACTACCGAAAAGGTGAT
 AGTTGGGCATATATCCAGTATGAAAGCCTGGATGCAGCGCATGCTGCCTGGACCCATATGCGGGGCTTCC
 CACTTGGTGGCCAGATCGACGCCTTAGAGTAGACTTTGCCGACACCGAACATCGTTACCAGCAGCAGTA
 TCTGCAGCCTCTGCCCTGACTCATTATGAGCTGGTACAGATGCTTTTGGACATCGGGCACCAGACCTT
 TTGAGGGGTGCTCGGGATAGGACACCACCTTACTATACAGAGATCGTGATAGGGACCTTATCCTGACT
 CTGATTGGGTGCCACCCACCCAGTCCGAGAACGCAGCACTCGGACTGCAGTACTTCTGTGCCTGC
 TTACGAGCCACTGGATAGCCTAGATCGCAGGCGGGATGGTTGGTCTTGGACCGGGACAGAGGTGATCGA
 GATCTGCCAGCAGCAGAGACCAGCCTAGGAAGCGAAGGCTGCCTGAGGAGAGTGGAGGACGTATCTGG
 ATAGGTCTCCTGAGAGTGACCGCCACGAAAACGTCACCTGCGCTCCTTCTCCTGACCGCAGTCCAGAATT
 GAGCAGTAGCCGGGATCGTTACAACAGCGACAATGATCGATCTTCCCGTCTTCTTGGAAAGGCCCTCT
 CCAATCAGAGACAGACGAGGTAGTTTGGAGAAGAGCCAGGTGACAAGCGAGACCGTAAAAACTCTGCAT
 CAGCTGAACGAGATAGGAAGCACCGGACAACGCTCCACTGAGGGAAAAAGCCCTTGAAAAAGAAGA
 CCGCTCTGATGGGAGTGCACCTAGCACCAGCACTGCTTCTTCCAAGCTGAAGTCCCGTCCCAGAAACAG
 GATGGGGGGACAGCCCTGTGGCATCAGCCTCTCCAAACTCTGTTTGGCCTGGCAGGGCATGCTTCTAC
 TGAAGAACAGCAACTTCTTCCAACATGCATCTGTTGCAGGGTACCTCCAAGTGGCTAGTAGTCTTCT
 TGTGGAGGTTCAACTGGAGGCAAAGTGGCCAGCTCAAGTCACTCAGCGTCTCCGTTTGGACCAGCCC
 AAGTTGGATGAAGTAACTCGACGCATCAAAGTAGCAGGGCCCAATGGTTATGCCATTCTTTTGGCTGTGC
 CTGGAAGTTCTGACAGCCGCTCCTCTTCTCAGCTGCATCAGACACTGCCACTTCTACTCAGAGGCC
 ACTTAGGAACCTTGTGTCTATTTAAAGCAAAGCAGGCAGCCGGGTGATCAGCCTCCCTGTGGGGGGC
 AACAAAGACAAGGAAAACACCGGGTCTTCATGCCTTCCACCTTGTGAGTTCTCCAGCAGTTCTCTGG
 ATTCCCTGCCAAGGCACTGGCCAAATCTGAAGAAGATTACCTGGTCATGATCATTGTCCGTGCAAACT
 GGTGAACAGCGGATGAAGATATGGAATCAAAGCTC

ACGCGTACGCGGCCGCTCGAG - GFP Tag - GTTTAA

Protein Sequence: >RG233225 representing NM_001201545
 Red=Cloning site Green=Tags(s)

MRTAGRDPVPRRSRWRRAVPLCETSAGRRTQLRGDDLRRPATMKGKERSPVKAKRSRGGEDTSRGER
 SKKLGSGSGSNGSSSGKTDSSGGSSRRSLHDKSSSRGGSREYDTGGGSSSSRLHSYSSPSTKNSSGGGES
 RSSSRGGGGSRSSSGAASSAPGGGDGAETKTKISELGSQLSDEAVEDGLFHEFKRFGDVSVKISHLSGS
 GSGDERVAFVNFRRPEDARAACHARGRLVLYDRPLKIEAVYVSRRRSRSPDKDTPPSASVVGASVGGH
 RHPPGGGGQSRSLSPGGAALGYRDYRLQQLALGRLLPPPPPPPLPRDLERERDYPFVERVRPAYSLEPRVG
 AGAGAAPFREVEI SPEDDQRANRTLFLGNLDITVTESDLRRAFDRFGVITEVDIKRPSRGTSTYGFLLK
 FENLDMSHRAKLAMSGKIIIRNPIKIGYGKATPTTRLWVGGGLPWVPLAALAREFDRFGTIRTIDYRKG
 SWAYIQYESLDAHAATHMRGFPLGGPDRRLRVDFADTEHRYQQYQLPLPLTHYELVTDAGHRAPDP
 LRGARDRTPPLL YRDRDRDL YPDSWVPPPPVRRERSTRATAATSVPAYEPLDSLDRRRDGSWLDLDRDRDR
 DLPSSRDQPRKRLPEESGRHLDRSPEDRPRKRHCAPSPDRSPELSSSRDRYNSDNDRSSRLLLERPS
 PIRDRRGSLEKSQGDKRDRKNSASAERDRKHRTTAPTEGKSPLKKEDRSDGSAPSTSTASSKLSKSPSQKQ
 DGGTAPVASASPKLCLAWQGMILLKNSNFPNMFHLLQGDQVASSLLVEGSTGGKVAQLKIITQRLRLDQP
 KLDEVTRRIKVAGPNGYAILLAVPGSSDSRSSSSAASDTATSTQRPLRNLVSYLKQKQAAGVISLIPVGG
 NKDKENTGVLHAFPPCEFSSQQLDSPAALAKSEEDYLVMIIVRAKLVEQRMKIWNLSK

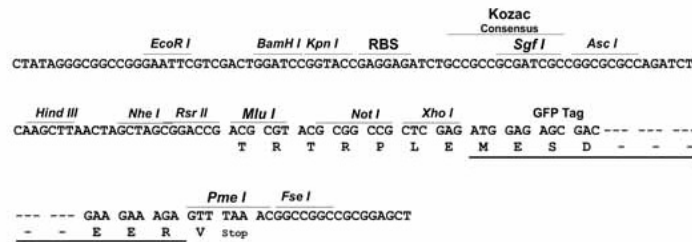
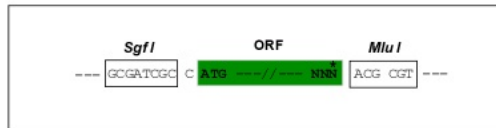
TRTRPLE - GFP Tag - V

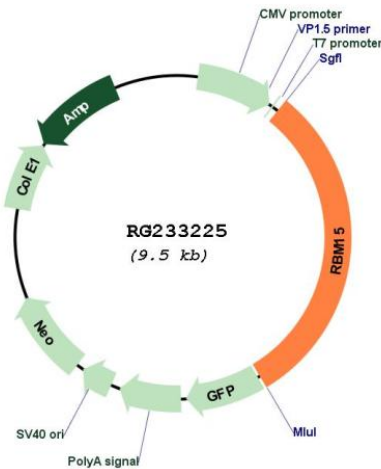
Restriction Sites:

SgfI-MluI

Cloning Scheme:

Cloning sites used for ORF Shuttling:



Plasmid Map:


ACCN: NM_001201545

ORF Size: 2907 bp

OTI Disclaimer: The molecular sequence of this clone aligns with the gene accession number as a point of reference only. However, individual transcript sequences of the same gene can differ through naturally occurring variations (e.g. polymorphisms), each with its own valid existence. This clone is substantially in agreement with the reference, but a complete review of all prevailing variants is recommended prior to use. [More info](#)

OTI Annotation: This clone was engineered to express the complete ORF with an expression tag. Expression varies depending on the nature of the gene.

Components: The ORF clone is ion-exchange column purified and shipped in a 2D barcoded Matrix tube containing 10ug of transfection-ready, dried plasmid DNA (reconstitute with 100 ul of water).

Reconstitution Method:

1. Centrifuge at 5,000xg for 5min.
2. Carefully open the tube and add 100ul of sterile water to dissolve the DNA.
3. Close the tube and incubate for 10 minutes at room temperature.
4. Briefly vortex the tube and then do a quick spin (less than 5000xg) to concentrate the liquid at the bottom.
5. Store the suspended plasmid at -20°C. The DNA is stable for at least one year from date of shipping when stored at -20°C.

RefSeq: [NM_001201545.1](#), [NP_001188474.1](#)

RefSeq Size: 3338 bp

RefSeq ORF: 2910 bp

Locus ID: 64783

UniProt ID: [Q96T37](#)

Cytogenetics: 1p13.3

Protein Families: Transcription Factors

Gene Summary: Members of the SPEN (Split-end) family of proteins, including RBM15, have repressor function in several signaling pathways and may bind to RNA through interaction with spliceosome components (Hiriart et al., 2005 [PubMed 16129689]).[supplied by OMIM, Feb 2009]