

Product datasheet for **RG233206**

DATF1 (DIDO1) (NM_001193370) Human Tagged ORF Clone

Product data:

Product Type: Expression Plasmids
Product Name: DATF1 (DIDO1) (NM_001193370) Human Tagged ORF Clone
Tag: TurboGFP
Symbol: DIDO1
Synonyms: BYE1; C20orf158; DATF-1; DATF1; DIDO2; DIDO3; DIO-1; DIO1; dj885L7.8
Mammalian Cell Selection: Neomycin
Vector: pCMV6-AC-GFP (PS100010)
E. coli Selection: Ampicillin (100 ug/mL)
ORF Nucleotide Sequence: >RG233206 representing NM_001193370
Red=Cloning site Blue=ORF Green=Tags(s)

TTTTGTAATACGACTCACTATAGGGCGGCCGGAATTCGTCGACTGGATCCGGTACCGAGGAGATCTGCC
GCC**CGATCGCC**

ATGGACGACAAAGGGCAGCCGAGCAATGAGGAGGCACCTAAGGCCATCAAACCCACCAGCAAAGAGTTCA
GGAAAACATGGGGTTTTCGAAGGACCCTATCGCCAAGCGAGAGGGCGCAGGGGACGCGGAGGCTGACCC
ACTGGAGCCGCCACCCACAGCAGCAGCTGGCCTGTCCCTGCGGCGCAGTGGGAGGCAGCCAAAGCGC
ACTGAGCGCGTGGAGCAGTTCTGACCATTGCGCGGCCCGCGGCAGGAGGAGCATGCCTGTCTCCCTGG
AGGATTCTGGTGAGCCCACGTCTGCCCCGCCACAGACGCGGAGACAGCCTCCGAGGGCAGCGTGGAAAG
CGCTTCTGAGACCAGAAGCGGCCCCAGTCTGTTCCACAGCTGTGAAGGAACGACCAGCCTCTTCTGAA
AAGGTGAAAGGAGGGGATGACCACGATGACACCTCCGATAGTGACAGCGATGGCCTGACCTTGAAGAGC
TTCAGAATCGCCTTCGCAGGAAGCGGGAACAGGAGCCCACTGAGAGGCCCTGAAAGGGATCCAGAGTCG
CCTGCGGAAGAAGCGCCGGGAGGAGGGTCCCAGGAGACTGTGGGCTCCGAGGCCAGTGACACTGTGGAG
GGCGTCTGCCAGTAAGCAGGAGCCCGAGAACGATCAGGGGTTGTGTCCAGGCTGGGAAAGATGACA
GAGAGAGTAAGTTGGAGGGAAAGCGGCTCAGGACATCAAAGATGAGGAGCCTGGAGACTTGGGCCGACC
GAAGCCTGAATGTGAGGGTTACGACCCCAACGCCCTGTATTGCATTTGCCGCCAGCCTCACAAACAGG
TTTATGATTTGCTGTGACCGCTGTGAAGAATGGTTTCATGGCGATTGTGTGGCATTCTGAGGCTCGAG
GGAGGCTTTTGGAAAGGAATGGGGAAGACTATATCTGCCAAACTGCACCATTCTGCAAGTGACAGGATGA
GACTCATTGAGAAACGGCAGATCAGCAGGAAGCTAAATGGAGACCTGGAGATGCTGATGGCACCGATTGT
ACAAGTATAGGAACAATAGAGCAGAAGTCTAGCGAAGACCAAGGGATAAAGGGTGAAGTTGAGAAAGCTG
CAAATCCAAGTGGAAGAAGAACTCAAGATCTCCAGCCTGTGATAGAGGCGCCTGGTGCCTCAAATG
TATTGGCCCCGGGTGCTGTACGTGGCGCAGCCGACTCGGTGTACTGCAGTAATGACTGTATCCTCAA
CACGCCGAGCGACAATGAAGTTTCTAAGCTCAGGTAAGAACAGAAAGCCAAAGCCTAAAGAAAAGATGA
AGATGAAGCCAGAGAAGCCAGTCTTCCGAAATGCGGTGCTCAGGCAGGTATTAATCTCTTCTGTGCA
CAAGAGACCAGCTCCAGAAAAAAGAGACCACAGTGAAGAAGGCAGTGGTGGTCCCTGCGCGGAGTGAA



[View online »](#)

GCACTCGGGAAGGAAGCAGCTTGTGAGAGCAGCACGCCGTCGTGGGCGAGCGATCACAATTACAATGCAG
TAAAGCCAGAAAAGACTGCTGCTCCCTCGCCGTCCTGTTGTATAAATCCACGAAGGAAGACAGGAGGTC
CGAGGAGAAAAGCGGCAGCCATGGCAGCCTCAAAGAAAACAGCCCTCCAGGCTCCGCGGTGGGCAAGCAG
CCTGCACCTAGAAACCTCGTGCCAAAGAAGTCTTCTTTTGCTAATGTGGCAGCAGCCACACCAGCCATTA
AAAAGCCACCCTCAGGTTTCAAGGGCACCATCCCAAGAGGCCATGGCTCTCCGCTACCCCATCGAGTGG
TGCTTCAGCTGCCAGGCAGGCCGACCGGCACCTGCAGCGGCAACGGCTGCCTCCAAGAAGTTCCTGGC
TCCGCTGCTTTGGTGGGAGCCGTAAAGGAAGCCAGTGGTACCTTCTGTTCCAATGGCCTCGCCAGCCCCAG
GACGCCTTGGGGCTATGAGTGTGCACCATCGCAGCCAAATTCACAAATTCGGCAAAAATATCAGACGCTC
CTTAAAAGAGATTTTGTGAAAAAGAGTCAATGACAGCGATGACTTAATCATGACAGAAAACGAAGTAGGA
AAAATTGCCCTCCATATTGAGAAGGAGATGTTTAACTTGTTCAGGTTACAGATAATCGCTACAAGAGTA
AATATCGCAGCATCATGTTCAACCTGAAGGACCCTAAAAATCAGGGACTTCCATCGTGTCTGCGTGA
GGAAATCTCTTTGGCGAAACTTGTGAGACTGAAGCCAGAAGAACTTGATCTAAAGAGCTTTCACGTGG
AAAGAGAGGCCAGCGAGATCTGTGATGGAGTCCAGAACTAACTGCACAATGAAAGCAAGAAGACGGCCC
CCAGGCAGGAGGCCATCCCCGATCTGGAGGACTCTCCGCCAGTGTGGATTTCAGAGGAACAGCAAGAGTC
AGCAGTGTCTCCCTGAGAAGAGCACAGCGCCGCTTCTCGACGTCTTCAGCAGCATGTTGAAAGACACC
ACCAGTCAGCACCGCGCACACCTTTCGATCTCAACTGTAAAATTTGCACAGGCCAGGTTCCCTCCGCGAG
AAGATGAGCCAGCTCCGAAAAACAATAATTTGTCAGTCTCTGTTAAGAAAAGAACTTAAAAATCAAAGCA
TGACAGCTCTGCACCTGACCCAGCTCCGGATTACGCTGATGAGGTGATGCCGGAGGCTGTGCCTGAAGTT
GCCTCTGAGCCAGGCCTAGAAAAGTGTCTCATCCAAATGTGGACAGAACGTATTTCCCTGGGCCTCCAG
GAGATGGCCATCCCGAGCCCTCCCCGCTGGAAGACCTGTCCCCCTGCCAGCCTCCTGTGGGAGCGGGGT
GGTCACCACCGTCACAGTGTCCGGCCGGGACCCAGGACCGCTCCAAGCAGTTCATGCACAGCCGTGGCC
TCCGCAGCATCCCGCCAGACAGCACCCACATGGTGAAGCCAGACAGGATGTGCCGAAGCCTGTCTTGA
CTTCTGTGATGGTGCCCAAGTCCATACTAGCTAAGCCATCCTCATCTCCTGACCCAAGATACCTGTCAGT
TCCTCCGTACCAAAATATCAGCACTTCAGAATCAGTTCCTCCCTCCAGAGGGAGACACGACCCTCTTTTTG
TCTCGACTCAGCACCATTTGAAAAGGATTTATTAACATGCAGAGTGTGGCAAAAATTTGCTACTAAGGCGT
ATCCTGTCTCTGGGTGTTTTGATTACCTCAGTGAGGATTTGCCTGACACAATTCACATTGGTGGGAGGAT
CGCACCAGAGACAGTTTGGGATTATGTTGGCAAACCTCAAGTCTTCTGTGTCTAAGGAGCTCTGTCTGATC
CGCTTCCACCCCGCCACAGAGGAAGAGGAGGTGCGCTATATCTCTCTACTCTATTTCCAGCAGCCGTG
GCCGCTTTGGTGTGTAGCTAATAACAACAGGCACGTCAAGGACCTCTACCTGATCCCGCTGAGCGCCCA
GGACCCTGTTCCATCAAACCTTGGCCTTTGAGGGACCAGGTAAGCGCCGGCTTTCTGGGTGGAGG

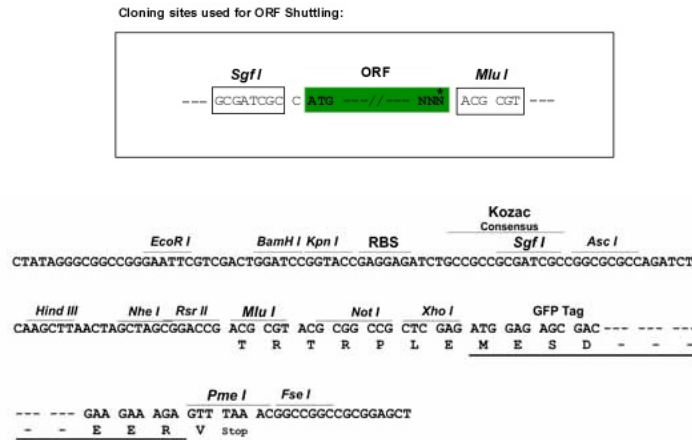
ACGCGTACGCGGCCGCTCGAG – GFP Tag – GTTTAA

Protein Sequence: >RG233206 representing NM_001193370
 Red=Cloning site Green=Tags(s)

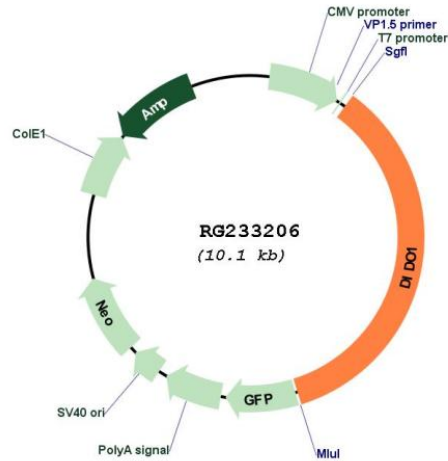
MDDKGDPSNEEAPKAIKPTSKEFRKTWGFRRTTIAKREGAGDAEADLEPPPPQQQLGLSLRRSGRQPKR
 TERVEQFLTIARRRRGRSMPVSLSDSGETSCPATDAETAEGSVESASETRSGPQSASTAVKERPASSE
 KVKGGDDHDDTSDSDSDGLTLKELQNRLRRKREQEPTEPLKGIQSRLRKKRREEGPAETVGEASDVE
 GVLPSKQEPENDQGVVSQAGKDDRESKLEKAAQDIKDEEPGDLGRPKECEGYDPNALYICRQPHNNR
 FMICCDRCEEFHGDVGISEARGRLLENGEDYICPNCTILQVQDETHSETADQQEAKWRPGDADGTD
 TSIGTIEQKSSDQGIKRIEKAANPSGKKLKIFQPVIEAPGASKCIGPGCCHVAQPDVSVYCSNDCILK
 HAAATMKFLSSGKEQKPKPEKMKMKPEKPSLPKCGAQAGIKISSVHKRPAPEKKETTIVKAVVVPARSE
 ALGKEAACESSTPSWADHNYNAVKPEKTAAPSPSLLYKSTKEDRRSEEKAAAMAASKKTAAPGSAVGKQ
 PAPERLVPKSSFANVAATPAIKKPPSGFKGTIPKRPWLSATPSSGASARQAGPAPAAATAASKKFP
 SAALVGAVRKPVPVSPMASPAPGRLGAMSAAPSQNSQIRQNIIRSLKEILWKRVNDDLLIMTENEV
 KIALHIEKEMFNLFQVTDNRYKSKYRSIMFNLDKPNQGLFHRVLRREEISLAKLVRLKPEELVSKELSTW
 KERPARSVMESRTKLNHESKKTAPRQEAIPDLESDPPVSDSEEQESARAVPEKSTAPLLDVFSSMLKDT
 TSQHRAHLFDLNCKICTGQVPSAEDEPAPKQKLSASVKKEDLKSXHDSSAPDPAPDSADEVMPEAVPEV
 ASEPLESASHPNVDRTYFPGPPGDGHPEPSPLEDLSPCPASCSSGVTVTVSGRDPRTAPSSSCTAVA
 SAASRPDSTHMVEARQDVPKPVLTSVMVPKSIKAKPSSSPDPRLSVPPSPNISTSESRSPEGDITLFL
 SRLSTIWKGFINMQSVAKFVTKAYPVSGCFDYLSEDLPTIHIGGRIAPKTVWDVYVGLKSSVSKELCLI
 RFHPATEEEEVAYISLYSYFSSRGRFGVANNRHRVKDLYLIPLSAQDPVPSKLLPFEGPGKRRLSGWR

TRTRPLE - GFP Tag - V

Restriction Sites: SgfI-MluI
Cloning Scheme:



Plasmid Map:



ACCN: NM_001193370

ORF Size: 3567 bp

OTI Disclaimer: The molecular sequence of this clone aligns with the gene accession number as a point of reference only. However, individual transcript sequences of the same gene can differ through naturally occurring variations (e.g. polymorphisms), each with its own valid existence. This clone is substantially in agreement with the reference, but a complete review of all prevailing variants is recommended prior to use. [More info](#)

OTI Annotation: This clone was engineered to express the complete ORF with an expression tag. Expression varies depending on the nature of the gene.

Components: The ORF clone is ion-exchange column purified and shipped in a 2D barcoded Matrix tube containing 10ug of transfection-ready, dried plasmid DNA (reconstitute with 100 ul of water).

Reconstitution Method:

1. Centrifuge at 5,000xg for 5min.
2. Carefully open the tube and add 100ul of sterile water to dissolve the DNA.
3. Close the tube and incubate for 10 minutes at room temperature.
4. Briefly vortex the tube and then do a quick spin (less than 5000xg) to concentrate the liquid at the bottom.
5. Store the suspended plasmid at -20°C. The DNA is stable for at least one year from date of shipping when stored at -20°C.

RefSeq: [NM_001193370.2](#)

RefSeq Size: 7613 bp

RefSeq ORF: 3570 bp

Locus ID: 11083

UniProt ID: [Q9BTC0](#)

Cytogenetics: 20q13.33

Protein Families: Druggable Genome, Transcription Factors

Gene Summary: Apoptosis, a major form of cell death, is an efficient mechanism for eliminating unwanted cells and is of central importance for development and homeostasis in metazoan animals. In mice, the death inducer-obliterators-1 gene is upregulated by apoptotic signals and encodes a cytoplasmic protein that translocates to the nucleus upon apoptotic signal activation. When overexpressed, the mouse protein induced apoptosis in cell lines growing in vitro. This gene is similar to the mouse gene and therefore is thought to be involved in apoptosis. Alternatively spliced transcripts have been found for this gene, encoding multiple isoforms. [provided by RefSeq, Jul 2008]