

Product datasheet for **RG233183**

CTNND1 (NM_001206885) Human Tagged ORF Clone

Product data:

Product Type:	Expression Plasmids
Product Name:	CTNND1 (NM_001206885) Human Tagged ORF Clone
Tag:	TurboGFP
Symbol:	CTNND1
Synonyms:	BCDS2; CAS; CTNND; p120; p120(CAS); p120(CTN); P120CAS; P120CTN
Mammalian Cell Selection:	Neomycin
Vector:	pCMV6-AC-GFP (PS100010)
E. coli Selection:	Ampicillin (100 ug/mL)



[View online »](#)

ORF Nucleotide Sequence:

>RG233183 representing NM_001206885
 Red=Cloning site Blue=ORF Green=Tags(s)

TTTTGTAATACGACTCACTATAGGGCGGCCGGGAATTCGTCGACTGGATCCGGTACCGAGGAGATCTGCC
 GCC**CGGATCGCC**

ATGGACGACTCAGAGGTGGAGTCGACCGCCAGCATCTTGGCCTCTGTGAAGGAACAAGAGGCCAGTTTG
 AGAAGCTGACCCGGGCGCTGGAGGAGGAACGGCGCCACGTCTCGGCGCAGCTGGAACCGCTCCGGGTCTC
 ACCACAAGATGCCAACCCACTCATGGCCAACGGCACACTACCCGCCGGCATCAGAACGGCCGGTTTGTG
 GGCGATGCTGACCTTGAAGACAGAAATTTTCAGATTTGAAACTCAACGGACCCAGGATCACAGTCACC
 TTCTATATAGCACCATCCCAGGATGCAGGAGCCGGGCGAGATTGTGGAGACCTACACGGAGGAGGATCC
 TGAGGGAGCCATGTCTGTAGTCTCTGTGGAGACCTCAGATGATGGGACCACTCGGCGCACAGAGACCACG
 GTCAAGAAAGTAGTGAAGACTGTGACAACCGGACAGTACAGCCAGTCGATATGGGACCAGACGGGTTGC
 CTGTGGATGCTTCATCAGTTTCTAACAACTATATCCAGACTTTGGGTCGTGATTTCCGCAAGAATGGCAA
 TGGGGGACCTGGTCCCTATGTGGGGCAAGCTGGCACTGCTACCCTCCTAGGAACCTCCACTACCCTCCT
 GATGGTTATAGTCGCCACTATGAAGATGGTTATCCAGGTGGCAGTGATAACTATGGCAGTCTGTCCCGGG
 TGACCCGCATTGAGGAGCGGTATAGGCCAGCATGGAAGGCTACCGGGCACCTAGTAGACAGGATGTGTA
 TGGGCCCCAACCCAGGTTCCGGTAGGTGGGAGCAGCGTGGATCTGCATCGCTTTCATCCAGAGCCTTAT
 GGGCTAGAGGATGACCAGCGTAGTATGGGCTATGATGACCTGGATTATGGTATGATGTCTGATTATGGCA
 CTGCCCGTCGGACTGGGACACCCCTCGACCCTCGTCGGCGCCTCAGGAGCTATGAAGACATGATTGGTGA
 GGAGGTGCCATCGGATCAATACTACTGGGCTCCTTTGGCCAGCATGAGCGAGGAAGTTTAGCAAGCTTG
 GATAGCTGCGCAAAGGAGGGCCCTCCACCTCCTAATTGGAGACAGCCAGAGCTGCCAGAGGTGATCGCCA
 TGCTTGGATTCCGCTTGGATGCTGTCAAGTCCAATGCAGCTGCATACCTGCAACACTTATGCTACCGCAA
 TGACAAGGTGAAGACTGACGTGCGGAAGCTCAAGGGCATCCAGTACTGGTGGGATTGTTAGACCATCCC
 AAAAAGGAAGTGACCTTGGAGCCTGTGGAGCTCTCAAGAATATCTCTTTTGGACGTGACCAGGATAACA
 AGATTGCCATAAAAACTGTGATGGTGTGCCTGCCCTTGTGCGATTGCTTCGAAAGGCTCGTGATATGGA
 CCTTACTGAAGTTATTACCGGAACCCTGTGGAATCTTTCATCCCATGACTCAATCAAAATGGAGATTGTG
 GACCATGCACTGCATGCCTTGACAGATGAAGTGATCATTCTCATTCTGGTTGGGAGCGGGAACCTAATG
 AAGACTGTAAGCCACGCCATATTGAGTGGGAATCGGTGCTACCAACACAGCTGGCTGCCTTAGGAATGT
 AAGCTCAGAGAGGAGTGAAGCTCGCCGGAACCTCGGGAATGTGATGGTTTAGTTGATGCCCTCATTTTC
 ATTTGTTAGGCTGAGATTGGGCAGAAGGATTTCAGACAGCAAGCTTGTAGAGAAGTGTGTTGCCTCTTTC
 GGAACCTATCATATCAAGTTACCGGGAGATCCCACAGGCAGAGCGTTACCAAGAGGCAGCTCCCAATGT
 TGCCAACAATACTGGGCCACATGCTGCCAGTTGCTTTGGGGCCAAGAAGGGCAAAGATGAGTGGTTCTCC
 AGAGGGAAAAAACCCTATAGAGGATCCAGCAAACGATACAGTGGATTTCCCTAAAAGAACGAGTCCAGCTC
 GAGGCTATGAGCTCTTATTTTCAGCCAGAGGTGGTTCGGATATACATCTCACTTCTTAAGGAGAGCAAGAC
 TCCTGCCATCCTAGAAGCCTCAGCTGGAGCTATCCAGAAGTGTGTGCTGGGCGCTGGACGTATGGTCGA
 TACATCCGCTCTGCTCTGCGTCAAGAGAAGGCTCTTTCTGCCATAGCTGACCTCCTGACTAATGAACATG
 AACGGTGGTGAAGCTGCATCTGGAGCACTGAGAAACCTGGCTGTGGATGCTCGCAACAAGAATTAAT
 TGGTAAACATGCTATTCCTAAGTGGTAAAGAATCTGCCAGGAGGACAGCAGAAGTCTCTTGGAAATTC
 TCTGAGGACACTGTCATCTCTATTTTGAACACTATCAACGAGGTTATCGCTGAGAAGTGGAGGCTGCCA
 AAAAGCTTCGAGAGACACAGGATTTGAGAAGCTGGTGTGATCAACAAATCAGGGAACCGCTCAGAAAA
 AGAAGTTCGAGCAGCAGCACTTGTATTACAGACAATCTGGGGATATAAGGAACTGCGGAAGCCACTGGAA
 AAAGAAGGATGGAAGAAATCAGACTTTCAGGTGAATCTAAACAATGCTTCCCGAAGCCAGAGCAGTCATT
 CATATGATGATAGTACTCTCCCTCTATTGACCGGAACCAAAAATCAGATAAGAAACCTGATCGGGAAGA
 AATTCAGATGAGCAATATGGGATCAAACACAAAATCACTAGATAACAATATTCCACACCAAAATGAGAGA
 GGAGACCACAATAGAACACTGGATCGATCGGGGATCTAGGCGACATGGAGCCATTGAAGGGAACAACAC
 CCTTGATGCAGAAGATT

AG**CGGACCG**ACGCGTACGCGGCCGCTCGAG - GFP Tag - GTTTAA

Protein Sequence: >RG233183 representing NM_001206885
 Red=Cloning site Green=Tags(s)

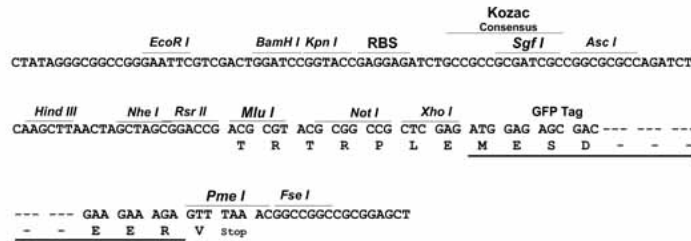
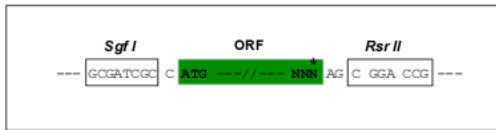
MDDSEVESTASILASVKEQEAQFEKLTRALEEERRHVSAQLERVRVSPQDANPLMANGTLTRRHQNGRFV
 GDADLERQKFSCLKLNGPQDHSLLYSTIPRMQEPGQIVETYTEDPEGAMSVSVETSDDGTRRTETT
 VKKVVKTVTRTVQPVAMGPDGLPVDASSVSNNYIQTGRDFRKNNGGPGPYVQGAGTATLPRNFHYPP
 DGYSRHYEDGYPGSDNYGSLSRVTRIEERYRPSMEGYRAPSRQDVYGPQVQVRVGGSSVDLHRFHPEPY
 GLEDDQRSMGYDDL DYGMMSDYGTARRTGTPSDPRRRLRSYEDMIGEEVPSDQYYWAPLAQHERGSLASL
 DSLRKGKGGPPPNWRQPELPEVIAMLGFRLLDAVKSNAAAYLQHLCYRNDKVKT DVRKLGIPVLVGLLDHP
 KKEVHLGACGALKNISFGRDQDNKIAIKNCDGVPALVRLLRKARDMDL TEVITGTLWNLSSHDSIKMEIV
 DHALHAL TDEVIIPHSGWEREPNEDCKPRHIEWESVL TNTAGCLRNVSSESEARRKLRECDGLVDALIF
 IVQAEIGQKSDSKLVENCVCLLRNLSYQVHREIPQAERYQEAAPNVANNTGPHAASCFGAKKGDWFS
 RGKKPIEDPANDTVDFPKRTSPARGYELLFQPEVVRIYISLLKESKTPAILEASAGAIQNL CAGRWTYGR
 YIRSALRQEKALSAIADLLTNEHERVVKASGALRNLAVDARNKELIGKHAIPNLVKNLPGGQQNSSWNF
 SEDTVISILNTINEVIAENLEAAKKLRETQIEKLV L INKSGNRSEKEVRAAALVLQTIWGYKELRKPLE
 KEGWKKSDFQVNLNNASRSQSSHSYDDSTLPLIDRNQKSDKKPDREEIQMSNMGSNTKSLDNNYSTPNER
 GDHNRTLDRSGDLGDMPEPLKGTTPLMQKI

SGPTRRRLE - GFP Tag - V

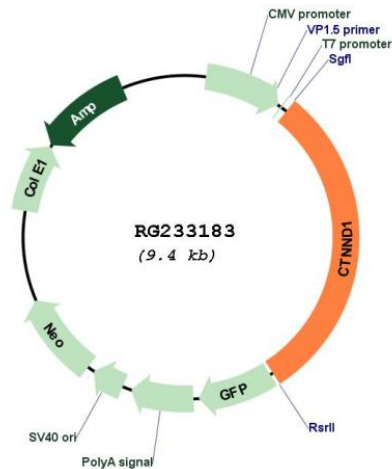
Restriction Sites: SgfI-RsrII

Cloning Scheme:

Cloning sites used for ORF Shuttling:



Plasmid Map:



ACCN: NM_001206885

ORF Size: 2817 bp

OTI Disclaimer: The molecular sequence of this clone aligns with the gene accession number as a point of reference only. However, individual transcript sequences of the same gene can differ through naturally occurring variations (e.g. polymorphisms), each with its own valid existence. This clone is substantially in agreement with the reference, but a complete review of all prevailing variants is recommended prior to use. [More info](#)

OTI Annotation: This clone was engineered to express the complete ORF with an expression tag. Expression varies depending on the nature of the gene.

Components: The ORF clone is ion-exchange column purified and shipped in a 2D barcoded Matrix tube containing 10ug of transfection-ready, dried plasmid DNA (reconstitute with 100 ul of water).

Reconstitution Method:

1. Centrifuge at 5,000xg for 5min.
2. Carefully open the tube and add 100ul of sterile water to dissolve the DNA.
3. Close the tube and incubate for 10 minutes at room temperature.
4. Briefly vortex the tube and then do a quick spin (less than 5000xg) to concentrate the liquid at the bottom.
5. Store the suspended plasmid at -20°C. The DNA is stable for at least one year from date of shipping when stored at -20°C.

RefSeq: [NM_001206885.1](#), [NP_001193814.1](#)

RefSeq Size: 6276 bp

RefSeq ORF: 2820 bp

Locus ID: 1500

UniProt ID: [O60716](#)

Cytogenetics: 11q12.1

Protein Families: Druggable Genome

Protein Pathways: Adherens junction, Leukocyte transendothelial migration

Gene Summary: This gene encodes a member of the Armadillo protein family, which function in adhesion between cells and signal transduction. Multiple translation initiation codons and alternative splicing result in many different isoforms being translated. Not all of the full-length natures of the described transcript variants have been determined. Read-through transcription also exists between this gene and the neighboring upstream thioredoxin-related transmembrane protein 2 (TMX2) gene. [provided by RefSeq, Dec 2010]