

Product datasheet for **RG233178**

Estrogen induced gene 121 protein (KIAA1324) (NM_001267048) Human Tagged ORF Clone

Product data:

Product Type:	Expression Plasmids
Product Name:	Estrogen induced gene 121 protein (KIAA1324) (NM_001267048) Human Tagged ORF Clone
Tag:	TurboGFP
Symbol:	ELAPOR1
Synonyms:	EIG121; KIAA1324
Mammalian Cell Selection:	Neomycin
Vector:	pCMV6-AC-GFP (PS100010)
E. coli Selection:	Ampicillin (100 ug/mL)



[View online »](#)

ORF Nucleotide Sequence:

>RG233178 representing NM_001267048
 Red=Cloning site Blue=ORF Green=Tags(s)

TTTTGTAATACGACTCACTATAGGGCGGCCGGGAATTCGTCGACTGGATCCGGTACCGAGGAGATCTGCC
 GCC**CGCATCGCC**

ATGGCTGAGCCTGGGCACAGCCACCATCTCTCCGCCAGAGTCAGGGGAAGAACTGAGAGGGCGCATACCCC
 GGCTGTGGCGGCTGCTGCTCTGGGCTGGGACCGCCTTCCAGGTGACCCAGGGAACGGGACCGGAGCTTCA
 TGCTGCAAAGAGTCTGAGTACCACTATGAGTACACGGCGTGTGACAGCACGGGTTCAGGTGGAGGGTCC
 GCCGTGCCGATACCCCGGGCCTGTGCACCAGCCTGCCTGACCCCGTCAAGGGCACCGAGTCTCCTTCT
 CCTGCAACGCCGGGAGTTTCTGGATAGAAGGACCAGTCATGTAAGCCATGCGCTGAGGGCCGCTACTC
 CCTCGGCACAGGCATTCCGGTTTGTGAGTGGGATGAGCTGCCCATGGCTTGGCCAGCCTCTCAGCCAAC
 ATGGAGCTGGATGACAGTGTGCTGAGTCCACCGGAACTGTACTTCGTCGAAGTGGGTTCCCGGGGGCG
 ACTACATCGCCTCAACACGGACGAATGCACAGCCACACTGATGTACGCCGTCAACCTGAAGCAATCTGG
 CACCGTTAACTTGAATACTACTATCCAGACTCCAGCATCATCTTTGAGTTTTTCGTTGAGATGACCAG
 TGCCAGCCCAATGCAGATGACTCCAGGTGGATGAAGACCACAGAGAAAGGATGGGAATCCACAGTGTGG
 AGCTAAATCGAGGCAATAATGTCCTCTATTGGAGAACCACAGCCTTCTCAGTATGGACCAAAGTACCCAA
 GCCTGTGCTGACACAACCTCATGTACAAATGGGCCAAGCCGAAAATCTGTAGCGAGGACCTTGAGGGGGCA
 GTGAAGCTGCCTGCCTCTGGTGTGAAGACCCACTGCCACCCTGCAACCCAGGCTTCTTCAAACCAACA
 ACAGCACCTGCCAGCCCTGCCATATGGTTCCTACTCCAATGGCTCAGACTGTACCCGCTGCCCTGCAGG
 GACTGAACCTGCTGTGGGATTTGAATACAAATGGTGAACACGCTGCCACAAACATGGAACGACCGTT
 CTCAGTGGGATCAACTTCGAGTACAAGGCATGACAGGCTGGGAGGTGGTGGTGTGATCACATTTACACAG
 CTCTGGAGCCTCAGACAATGACTTCATGATTCTCACTCTGGTTGTGCCAGGATTTAGACTCCGCGAGT
 GGTGATGGCAGACACAGAGAATAAAGAGGTGGCCAGAATCACATTTGCTTTGAGACCTCTGTTCTGTG
 AACTGTGAGCTCTACTTCATGGTGGGTGTGAATCTAGGACCAACACTCCTGTGGAGACGTGGAAGGTT
 CCAAAGGCAAACAGTCTATACCTACATCATTGAGGAGAACAACACTACCACGAGCTTCACTGGGCCTTCCA
 GAGGACCACTTTTCATGAGGCAAGCAGGAAGTACACCAATGACGTTGCCAAGATCTACTCCATCAATGTC
 ACCAATGTTATGAATGGTGTGGCCTCCTACTGCCGTCCCTGTGCCCTAGAAGCCTCTGATGTGGGCTCCT
 CCTGCACCTCTTGTCTGCTGGTACTATATTGACCGAGATTGAGAACCTGCCACTCCTGCCCACTAA
 CACAATCTGAAAGCCCACCAGCCTTATGGTGTCCAGGCTGTGTGCCCTGTGGTCCAGGACCAAGAAC
 AACAGATCCACTCTCTGTGCTACAACGATTGCACCTTCTCACGCAACACTCCGACCAGGACTTTCAACT
 ACAACTTCTCCGCTTTGGCAAACACTGTCACTCTTGTGGAGGGCCAAGCTTCACTTCAAAGGGCTGAA
 ATACTTCCATCACTTTACCTCAGTCTCTGTGGAAACCAGGGTAGGAAAATGTCTGTGTGACCCGACAAT
 GTCACTGACCTCCGATTCTGAGGGTGTGAGTCAAGGTTCTCCAAATCTATCACAGCCTACGCTGCCAGG
 CAGTCACTATCCCCCAGAGGTGACAGGCTACAAGGCCGGGTTTCTCACAGCCTGTCAGCCTTGTGTA
 TCGACTTATTGGGGTGACAACAGATGACTCTGGATGGAATCACCTCCCAGCTGAACCTTTCCACCTG
 GAGTCTTGGGAATACCGGACGTGATCTTCTTTATAGGTCCAATGATGTGACCCAGTCTGCAGTTCTG
 GGAGATCAACCACCATCCGCGTCAGGTGCAGTCCACAGAAAACGTCCCTGGAAGTTTGTGCTGCCAGG
 AACGTGCTCGGATGGGACCTGTGATGGCTGCAACTTCCACTTCCCTGTGGGAGAGCGCGGCTGCTTGCCCG
 CTCTGCTCAGTGGCTGACTACCATGCTATCGTCAGCAGCTGTGTGGCTGGGATCCAGAAGACTACTTACG
 TGTGGCGAGAACCAAGCTATGCTCTGGTGGCATTCTCTGCCTGAGCAGAGAGTACCATCTGCAAAAC
 CATAGATTTCTGGCTGAAAGTGGGCATCTCTGCAGGCACCTGACTGCCATCCTGCTCACCCTTGTGACC
 TGCTACTTTTGGAAAAGAATCAAAAACAGAGTACAAGTACTCCAAGCTGGTGTGATGATGCTACTCTCA
 AGGACTGTGACCTGCCAGCAGCTGACAGCTGCCCATCATGGAAGGCGAGGATGTAGAGGACGACCTCAT
 CTTTACCAGCAAGAAGTCACTCTTTGGGAAGATCAAATCATTTACCTCCAAGAGGACTCCTGATGGATT
 GACTCAGTGCCGCTGAAGACATCCTCAGGAGCCCTAGACATGGACCTG

ACGCGTACGCGGCCGCTCGAG - GFP Tag - GTTTAA

Protein Sequence: >RG233178 representing NM_001267048
Red=Cloning site Green=Tags(s)

MAEPGSHHLSARVRGRTERIPRLWRLLLWAGTAFQVTQGTGPELHACKESEYHYEYACDSTGSRWRV
 AVPHTPGLCTSLPDPVKGTECSFSCNAGEFLDMKDQSCCKPCAEGRYSLGTGIRFDEWDELPHGFASLSAN
 MELDDSAEAESTGNCTSSKWWPRGDYIASNTDECTATLMYAVNLKQSGTVNFEYYPDSSIIFFEFFVQNDQ
 CQPNADDSRWMTTEKGFHSEVLSVLRGNNVL YWRTTAFSVWTKVPKPVL TQLMYKWAKPKICSEDLEGA
 VKLPASGVKTHCPPCNPGFFKTNNSTCQPCPYGSYSNGSDCTRCPAGTEPAVGFEYKWWNTLPTNMETTV
 LSGINFEYKGMTGWEVAGDHIYTAAGASDNDFMILTLVVPGRFPQSVMADTENKEVARITVFVETLCSV
 NCELYFMVGVNSRTNTPVETWKGSKGKQSYTYII EENTTT SFTWAFQRTTFHEASRKYTNDVAKIYSINV
 TNVMNGVASYCRPCALEASDVGSSTSCPAGYIDRDSGTCHSCPTNTILKAHQPYGVQACVPCGPGTKN
 NKIHSLCYNDCTFSRNTPTRTFNYNFSALANTVTLAGGPSFTSKGLKYFHFTLSL CGNQGRKMSVCTDN
 VTDLRIPEGESGFSKISITAYVCQAVIIPPEVTGYKAGVSSQPVS LADRLIGVTTDMTLDGITSPAELFHL
 ESLGIPDVIFFYRSNDVTQSCSSGRSTTIRVRCSPQKTVPGLLLPGTCS DGTCDGCNFHFLWESAAACP
 LCSVADYHAI VSSCVAGIQKTTYVWREPKLCSGGISLPEQRTVICKTIDFWLKVGI SAGTCTAILLTVLT
 CYFWKKNQKLEKYSKLVMNATLKDCDLPAADSCAIMEGEDVEDDLIFTSKKSLFGIKSFTSKRTPDGF
 DSVPLKTSSGGLDMDL

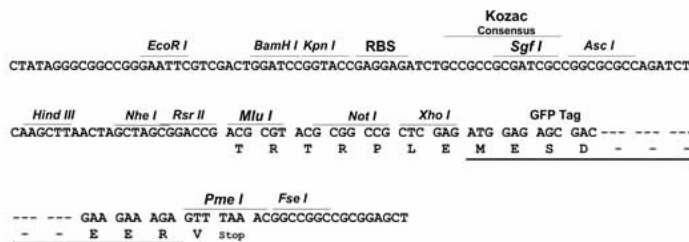
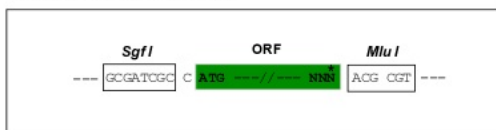
TRTRPLE - GFP Tag - V

Restriction Sites:

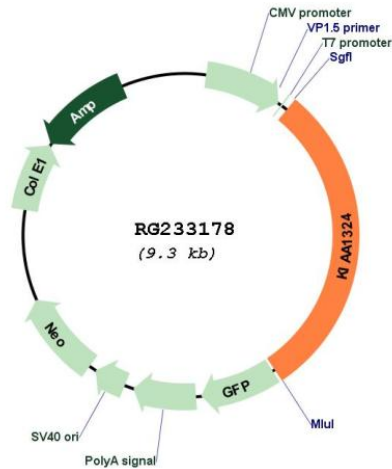
Sgfl-MluI

Cloning Scheme:

Cloning sites used for ORF Shutting:



Plasmid Map:



ACCN: NM_001267048

ORF Size: 2778 bp

OTI Disclaimer: The molecular sequence of this clone aligns with the gene accession number as a point of reference only. However, individual transcript sequences of the same gene can differ through naturally occurring variations (e.g. polymorphisms), each with its own valid existence. This clone is substantially in agreement with the reference, but a complete review of all prevailing variants is recommended prior to use. [More info](#)

OTI Annotation: This clone was engineered to express the complete ORF with an expression tag. Expression varies depending on the nature of the gene.

Components: The ORF clone is ion-exchange column purified and shipped in a 2D barcoded Matrix tube containing 10ug of transfection-ready, dried plasmid DNA (reconstitute with 100 ul of water).

Reconstitution Method:

1. Centrifuge at 5,000xg for 5min.
2. Carefully open the tube and add 100ul of sterile water to dissolve the DNA.
3. Close the tube and incubate for 10 minutes at room temperature.
4. Briefly vortex the tube and then do a quick spin (less than 5000xg) to concentrate the liquid at the bottom.
5. Store the suspended plasmid at -20°C. The DNA is stable for at least one year from date of shipping when stored at -20°C.

RefSeq: [NM_001267048.1](#), [NP_001253977.1](#)

RefSeq Size: 6793 bp

RefSeq ORF: 2781 bp

Locus ID: 57535

UniProt ID: [Q6UXG2](#)

Cytogenetics: 1p13.3

Protein Families: Transmembrane

Gene Summary: Expression of this gene is induced by estrogen and the encoded protein has been characterized as a transmembrane protein. The encoded protein has been found in to correlate with survival in certain carcinomas (PMID: 21102415) and may be important for cellular response to stress (PMID: 21072319). Alternative splicing results in multiple transcript variants. [provided by RefSeq, May 2012]