

Product datasheet for **RG233142**

USP10 (NM_001272075) Human Tagged ORF Clone

Product data:

Product Type:	Expression Plasmids
Product Name:	USP10 (NM_001272075) Human Tagged ORF Clone
Tag:	TurboGFP
Symbol:	USP10
Synonyms:	UBPO
Mammalian Cell Selection:	Neomycin
Vector:	pCMV6-AC-GFP (PS100010)
E. coli Selection:	Ampicillin (100 ug/mL)



[View online »](#)

ORF Nucleotide
Sequence:

>RG233142 representing NM_001272075
Red=Cloning site Blue=ORF Green=Tags(s)

TTTTGTAATACGACTCACTATAGGGCGGCCGGAATTCGTCGACTGGATCCGGTACCGAGGAGATCTGCC
GCC**CGGATCGCC**

ATGCCCTGGTTGCCCTCTCTCGAATAGGGCAGTATATTTTTGGAGATTTTAGCCCTGATGAATCAATC
AATTCTTTGTGACTCCTCGATCTTCAGTTGAGCTTCTCCATACAGTGGAACAGTTCTGTGTGGCACACA
GGCTGTGGATAAACTACCTGATGGACAAGAATATCAGAGAATTGAGTTTGGTGTGATGAAGCATTGAA
CCCAGTGACACTTTGCCGAGAACCCCCAGCTACAGTATTTCAAGCACACTGAACCCTCAGGCCCTGAAT
TTATTCTCGTTGTACAGCTTCCAAAAAACCCTGATGGTATCACTAAAGAAGCAAGCTATGGCTCCAT
CGACTGCCAGTACCCAGGCTCTGCCCTCGTTTGGATGGAAGTTCTAATGTGGAGCGGAAGTTTGGAA
AATGATGGTGTCTCAGGTGGTCTTGGACAAAGGGAGCGTAAAAAGAAGAAAAAGCGGCCACCTGGATATT
ACAGCTATTTGAAAGATGGTGGCGATGATAGTATCTCCACAGAAGCCCTGGTCAATGGCCATGCCAATTC
AGCAGTCCCGAACAGTGTCAAGTGCAGAGGATGCAGAATTTATGGGTGACATGCCCCCGTCAGTTACGCC
AGGACTTGTAACAGCCCCAGAACTCCACAGACTCTGTCAGTGCATTGTGCCTGACAGTCTTTCCCCG
GAGCACTCGGCAGTGACACCAGGACTGCAGGGCAGCCAGAGGGGGCCCCGGGGCTGATTTTGGTCACTC
TGCTTCCCTGCAGAGGCTGGCAGAGACACCCTGTCAAGGACAGCTGGGGCTCAGCCCTGCGTTGGTACC
GATACTACTGAAAACCTTGGAGTTGCTAATGGACAAATACTTGAATCCTCGGGTGAGGGCACAGCTACCA
ACGGGGTGGAGTTGCACACCACGGAAAGCATAGACTTGGACCCAAACCAACCCGAGAGTGCATCACCTCC
TGCTGACGGCACGGGCTCTGCATCAGGCACCCTTCTGTGAGCCAGCCCAAGTCTGGGCCAGCCTTTT
CATGATTTAAGCCCTCTTCTCCTCGCCGGTGGCCTATGTGAAACTAAGTATCCCTCCCGCCATAT
CTCCCCTGTTTCTGAAAAGCAGGTTGAAGTCAAAGAAGGGCTTGTTCGGTTTTCAGAGGATCCTGTAGC
CATAAAGATTGCAGAGTTGCTGGAGAATGTAACCCTAATCCATAAACAGTGTGCTTGAACCCCGTGGG
CTGATCAATAAAGGGAAGTGGTGTACATTAATGCTACACTGCAGGCATTGGTTGCTTGGCCGCCGATG
ACCACCTGATGAAGTTCATTCTCTGTATTCCAAAGTGCAAAGGCCTTGTACGTCAACACCCATGATAGA
CAGCTTTGTTCCGCTAATGAATGAGTTCATAATATGCCAGTACCTCCAAAACCCGACAAGCTCTTGGA
GATAAAATCGTGAGGGATATTGCCCTGGAGCTGCCTTTGAGCCACATATATTTACAGACTCCTGACAG
TTAACAAGTCAAGCCTGTCTGAAAAGGGTCGACAAGAAGATGCTGAGGAATACTTAGGCTCATTCTAAA
TGGACTTCATGAGGAAATGTTGAACCTAAAGAAGCTTCTCTACCAAGTAAATGAAAACTTACGATTTCC
AACGGCCCCAAAACCACTCGGTCAATGAAGAAGAGCAGGAAGAACAAGGTGAAGGAAGCGAGGATGAAT
GGGAACAAGTGGGCCCCCGGAACAAGACTTCCGTACCCGCCAGGCGGATTTTGTTCAGACTCCAATCAC
CGGCATTTTTGGTGGACACATCAGGTCTGTGGTTTACCAGCAGAGTTCAAAGAATCTGCCACTTTGCAG
CCATTTTTACGTTGCAGTTGGATATCCAGTCAAGATACGCACAGTCCAGGATGCACTGGAGAGCT
TGGTGGCAAGAGAATCTGTCCAAGTTATACCACAAAACCAACAAGAGGTTGAGATAAGTCAAGAGT
GACTCTGGAAAACTCCCTCCTGTCTCGTGTGCACCTGAAACGATTCTGTTTATGAGAAGACTGGTGGG
TGCCAGAAGCTTATCAAAAATATTGAATATCCTGTGGACTTGGAAATTAGTAAAGAACTGCTTTCTCCAG
GGGTTAAAAATAAGAATTTTAAATGCCACCGAACCTATCGGCTCTTTGCAGTGGTCTACCATCACGGCAA
CAGTGCAGCGGGCGCCATTACACTACAGACGCTTCCAGATCGGTCTGAATGGCTGGCTGCGCATCGAT
GACCAGACAGTCAAGGTGATCAACCAGTACCAGGTGGTGAACCAACTGCTGAACGCACAGCCTACCTCC
TGATTACCGCCGAGTGGACCTGTCTG

ACGCGTACGCGGCCGCTCGAG – GFP Tag – GTTTAA

Protein Sequence: >RG233142 representing NM_001272075
Red=Cloning site Green=Tags(s)

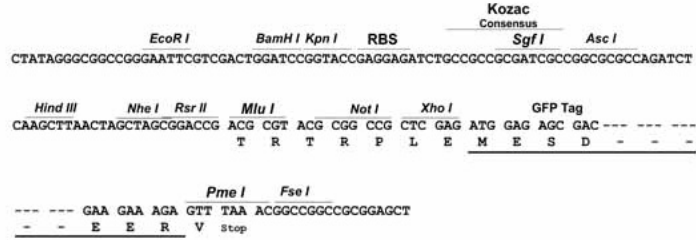
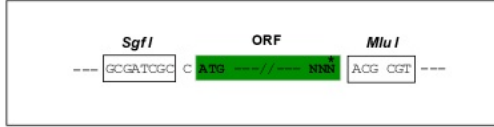
```
MPWLPSPIGQYIFGDFSPDEFNQFFVTPRSSVELPPYSGTVLCGTQAVDKLPDGQEYQRIEFGVDEVIE
PSDTLPRTPSYSSISSTLNPQAEFILGCTASKITPDGITKEASYGSIDCQYPGSALALDGSSNVEAEVLE
NDGVSGGLGQRERKKKKRPPGYSYLKDGGDDSI STEALVNGHANSAPNSVSAEDA EFMGDMPPSVTP
RTCNSPQNSTDSVSDIVPDSPPFGALGSDTRTAGQPEGGPGADFGQSCFPAEAGRDTLSRTAGAQCPCVGT
DTTENLGVANGQILESSGEGTATNGVELHTTESIDLDPKPEASPPADGTGSASGTLPVSQPKSWASLF
HDSKPSSSSPVAYVETKYSPPAISPLVSEKQVEVKEGLVPVSEDPAIKIAELLENTL IHKPVSLQPRG
LINKGNWCYINATLQALVACPPMYHMKFIPLYSKVQRPCTSTPMIDSFVRLMNEFTNMPVPPKPRQALG
DKIVRDIRPGA AFEPTYIYRLLTVNKSSLSEKGRQEDAE EYLGFI LNGLHEEMLNLKLLSPSNEKLTIS
NGPKNHSVNEEEQEEQEGSEDEWEQVGPRNKTSVTRQADFVQTPITGIFGGHIRSVVYQQSSKESATLQ
PFFTLQLDIQSDKIRTVQDALESLVARESVOGYTTTKTKQEVEISRRTLEKLPVVLVHLKRFVYEKTTGG
CQKLIKNI EYPVDLEISKELLSPGVKNK NFKCHR TYRLF AVVYHHGNSATGGHYTTDVFQIGLNGWLRID
DQTVKVINQYQVVKPTAERTAYLLYYRRVDLL
```

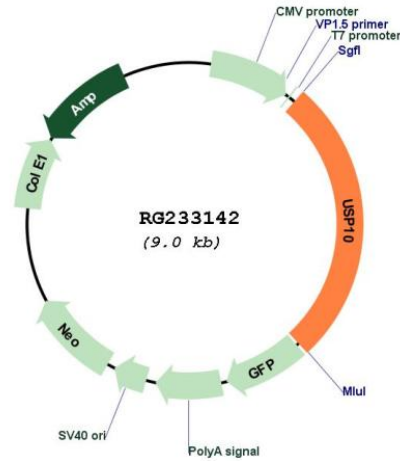
TRTRPLE - GFP Tag - V

Restriction Sites: Sgfl-MluI

Cloning Scheme:

Cloning sites used for ORF Shutting:



Plasmid Map:


ACCN: NM_001272075

ORF Size: 2406 bp

OTI Disclaimer: The molecular sequence of this clone aligns with the gene accession number as a point of reference only. However, individual transcript sequences of the same gene can differ through naturally occurring variations (e.g. polymorphisms), each with its own valid existence. This clone is substantially in agreement with the reference, but a complete review of all prevailing variants is recommended prior to use. [More info](#)

OTI Annotation: This clone was engineered to express the complete ORF with an expression tag. Expression varies depending on the nature of the gene.

Components: The ORF clone is ion-exchange column purified and shipped in a 2D barcoded Matrix tube containing 10ug of transfection-ready, dried plasmid DNA (reconstitute with 100 ul of water).

Reconstitution Method:

1. Centrifuge at 5,000xg for 5min.
2. Carefully open the tube and add 100ul of sterile water to dissolve the DNA.
3. Close the tube and incubate for 10 minutes at room temperature.
4. Briefly vortex the tube and then do a quick spin (less than 5000xg) to concentrate the liquid at the bottom.
5. Store the suspended plasmid at -20°C. The DNA is stable for at least one year from date of shipping when stored at -20°C.

RefSeq: [NM_001272075.2](#)

RefSeq Size: 3520 bp

RefSeq ORF: 2409 bp

Locus ID: 9100

UniProt ID: [Q14694](#)

Cytogenetics: 16q24.1

Protein Families: Druggable Genome, Protease

Gene Summary: Ubiquitin is a highly conserved protein that is covalently linked to other proteins to regulate their function and degradation. This gene encodes a member of the ubiquitin-specific protease family of cysteine proteases. The enzyme specifically cleaves ubiquitin from ubiquitin-conjugated protein substrates. The protein is found in the nucleus and cytoplasm. It functions as a co-factor of the DNA-bound androgen receptor complex, and is inhibited by a protein in the Ras-GTPase pathway. The human genome contains several pseudogenes similar to this gene. Several transcript variants, some protein-coding and others not protein-coding, have been found for this gene. [provided by RefSeq, Jan 2013]