

## Product datasheet for **RG233139**

### **SAP97 (DLG1) (NM\_001204387) Human Tagged ORF Clone**

#### **Product data:**

|                           |  |
|---------------------------|--|
| Product Type:             | Expression Plasmids                                |
| Product Name:             | SAP97 (DLG1) (NM_001204387) Human Tagged ORF Clone |
| Tag:                      | TurboGFP   |
| Symbol:                   | DLG1   |
| Synonyms:                 | DLGH1; hdlg; SAP-97; SAP97                         |
| Mammalian Cell Selection: | Neomycin   |
| Vector:                   | pCMV6-AC-GFP (PS100010)                            |
| E. coli Selection:        | Ampicillin (100 ug/mL)                             |



[View online »](#)

ORF Nucleotide  
Sequence:

>RG233139 representing NM\_001204387  
Red=Cloning site Blue=ORF Green=Tags(s)

TTTTGTAATACGACTCACTATAGGGCGGCCGGAATTCGTCGACTGGATCCGGTACCGAGGAGATCTGCC  
GCC**CGGATCGCC**

ATGAATTACATTTTCGGAACAACACACTTCTATACTCTCGCGCAGTCGAGGAGCAACTACTAGCTCTA  
GCCATGGCTCAGCAGGCCAAAGCAGAAACACTGGGCAAAAAGGGCTCGTCAGATGAACTGCAAGCTGA  
GCCAGAACCTTACGCTGGCAGCAGATAGTTGCATTTTTCACTCGAAGACACAGCTTTATTGACTGCATC  
TCGGTAGCCACCAGCTCCACCCAGGCAAACTCCCCAGTACTGGTCAACACAGATAGCTTGAAACAC  
CAACTTACGTTAATGGCACAGATGCAGATTATGAATATGAAGAAATCACACTTGAAAGGGGAAATTCAGG  
GCTTGGTTTCAGCATTGCAGGAGGTACGGACAACCCACACATTGGAGATGACTCAAGTATTTTCATTACC  
AAAATTATCACAGGGGAGCAGCCGCCAAGATGGAAGATTGCGGGTCAATGACTGTATATTACGAGTAA  
ATGAAGTAGATGTTCTGATGTAACACATAGCAAAGCAGTTGAAGCGTTGAAAGAAGCAGGGTCTATTGT  
ACGCTTGTATGTAAGAAGGAAACCAGTGTGCAAAAAAATAATGGAATAAAGCTCATTAAAGGTCTCT  
AAAGGTCTTGGGTTTAGCATTGCTGGAGGTGTTGGAAATCAGCATATTCCTGGGGATAATAGCATCTATG  
TAACAAAATAATTGAAGGAGGTGCAGCACATAAGGATGGCAAATTCAGATTGGAGATAAACTTTTAGC  
AGTGAATAACGTATGTTAGAAGAAGTACTCATGAAGAAGCAGTAACTGCCTAAAGAACACATCTGAT  
TTGTTTTATTGAAAGTGGCAAAACCCACAAGTATGTATATGAATGATGGCTATGCACCACCTGATATCA  
CCAACCTCTTCTCAGCCTGTTGATAACCATGTTAGCCCATCTCTCTTGGGCCAGACACCAGCATC  
TCCAGCCAGATACTCCCAAGTTCTAAAGCAGTACTTGGAGATGATGAAATACAAGGGAACCTAGAAAA  
TTATTTCTTTCATCGTGGCTCAACGGGCCCTGGTTTCAACATTGTAGGAGGAGAAGATGGAGAAGAAAT  
TTATTTCTTTATCTTAGCCGGAGGACCTGCTGATCTAAGTGGAGAGCTCAGAAAAGGAGATCGTATTAT  
ATCGGTAACAGTGTGACCTCAGAGCTGCTAGTCATGAGCAGGCAGCAGCTGCATTGAAAAATGCTGGC  
CAGGCTGTCACAATTGTTGCACAATATCGACCTGAAGAATACAGTCGTTTTGAAGCTAAAAATACATGATT  
TACGGGAGCAGATGATGAATAGTAGTATTAGTTCAGGGTCAGGTTCTCTTGAAGTACAGGAGGATC  
CCTCTATGTCAGAGCCCTTTTTGATTATGACAAGACTAAAGACAGTGGGCTTCCAGTCAGGGACTGAAC  
TTCAAATTTGGAGATATCCTCCATGTTATTAATGCTTCTGATGATGAATGGTGGCAAGCCAGGCAGGTTA  
CACCAGATGGTGAGAGCGATGAGGTCGGAGTGATCCCAAGTAAACGCAGAGTTGAGAAGAAAGAACGAGC  
CCGATTAACAGTGAATTCATTAATTAATTAATTAATTAATTAATTAATTAATTAATTAATTAATTAATTA  
AAAGGCCTGAAGCATGTAACCTTAATGCCAGCGATAGTGAAGTAGTTACCTAATCTTGATTACAGATG  
AGTATGGCTGCTCAAAAGGTGGTCAAGAAGAATACGCTTATCTTATGAACCAGTGAATCAACAAGAAGT  
TAATTATACTCGACCAGTGATCATATTGGGACCTATGAAAGACAGGATAAATGATGACTTGTATCTAGAA  
TTTCTGACAAATTTGGATCCTGTGTTCTCATACAACACTAGACAAAACGAGATTATGAGGTAGATGGAA  
GAGATTATCATTTTGTGACTTCAAGAGAGCAGATGGAAAAAGATATCCAGGAACATAAATTCATTGAAGC  
TGGCCAGTATAACAATCATCTATATGGAACAAGTGTTCAGTCTGTACGAGAAGTAGCAGAAAAGGGCAAA  
CACTGTATCCTTGATGTGTCTGGAAATGCCATAAAGAGATTACAGATTGCACAGCTTTACCTATCTCCA  
TTTTTATTAACCCAAATCCATGGAAAAATCATGGAAATGAATAAGCGTCTAACAGAAGAACAAGCCAG  
AAAAACATTTGAGAGAGCCATGAAACTGGAACAGGAGTTTACTGAACATTTACAGCTATTGTACAGGGG  
GATACGCTGGAAGACATTTACAACCAAGTGAACAGATCATAGAAGAACAATCTGGTTCTTACATCTGGG  
TTCCGGCAAAAAGAAAAGCTA

**ACGCGT**ACGCGGCCGCTCGAG – GFP Tag – GTTTAA

**Protein Sequence:** >RG233139 representing NM\_001204387  
Red=Cloning site Green=Tags(s)

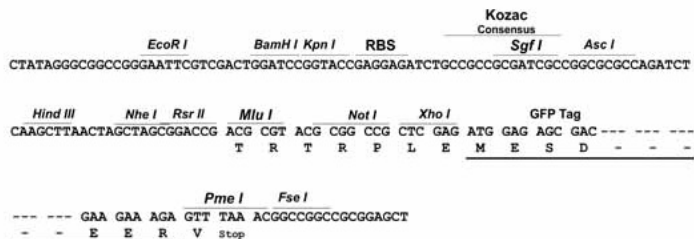
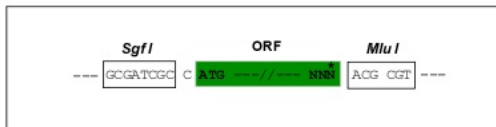
MNYIFGNNTLLYSRGSRGGNTSSSHGSAGPKQKHAKKGSDELQAEPEPSRWQQIVAFFTRRHSFIDCI  
SVATSSTQANPPPVLVNTDSLETPTYVNGTDADYEYEEITLERGNSGLGFSIAGGTDNPHIGDDSSIFIT  
KIITGGAAAQDGRRLRVNDCILRVNEVDVRDVTHSKAVEALKEAGSIVRLVYKRRKPVSEKIMEIKLIKGP  
KGLGFSIAGGVGNQHIPGDNSIYVTKIIEGGAHKDGKLIQDKLLAVNNVCLEEVTHEEAVTALKNTSD  
FVYLKVAKPTSMYMNDGYAPPDITNSSSQVDNHVSPSSFLGQTPASPARYSPVSKAVLGDDEITREPRK  
VVLHRGSTGLGFNIYGGEDGEGIFISFILAGGPADLSGELRKGDRISVNSVDLRAASHEQAAAALKNAG  
QAVTIVAQYRPEEYSRFEAKIHDLREQMMNSSISSGSGSLRTSQKRSLYVRALFDYDKTKDSGLPSQGLN  
FKFGDILHVINASDDEWWQARQVTPDGESDEVGVIPSKRRVEKKERARLKTVKFNSKTRDKGEIPDDMGS  
KGLKHVTSNASDSESSYLILITDEYGCSSKGGQEEYVLSYEPVNQQEVNYTRPVIIIGPMKDRINDDLISE  
FPDKFGSCVPHTTRPKRDYEVDRDYHFVTSREQMEKDIQEHKFIEAGQYNNHLYGTSVQSVREVAEKGG  
HCILDVSGNAIKRLQIAQLYPISIFIKPKSMENIMEMNKRLTEEQARKTFERAMKLEQEFTEHFTAIVQG  
DTLEDIYNQVKQIIEEQSGSYIWPVPAKEKL

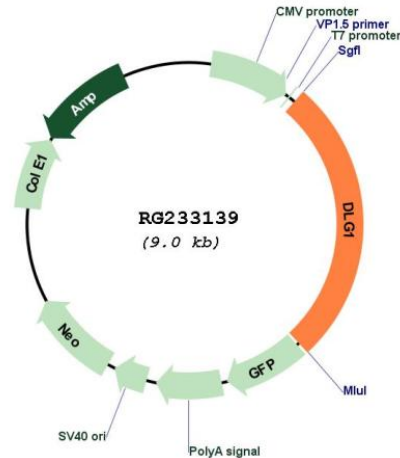
TRTRPLE - GFP Tag - V

**Restriction Sites:** SgfI-MluI

Cloning Scheme:

Cloning sites used for ORF Shutting:



**Plasmid Map:**


**ACCN:** NM\_001204387

**ORF Size:** 2400 bp

**OTI Disclaimer:** The molecular sequence of this clone aligns with the gene accession number as a point of reference only. However, individual transcript sequences of the same gene can differ through naturally occurring variations (e.g. polymorphisms), each with its own valid existence. This clone is substantially in agreement with the reference, but a complete review of all prevailing variants is recommended prior to use. [More info](#)

**OTI Annotation:** This clone was engineered to express the complete ORF with an expression tag. Expression varies depending on the nature of the gene.

**Components:** The ORF clone is ion-exchange column purified and shipped in a 2D barcoded Matrix tube containing 10ug of transfection-ready, dried plasmid DNA (reconstitute with 100 ul of water).

**Reconstitution Method:**

1. Centrifuge at 5,000xg for 5min.
2. Carefully open the tube and add 100ul of sterile water to dissolve the DNA.
3. Close the tube and incubate for 10 minutes at room temperature.
4. Briefly vortex the tube and then do a quick spin (less than 5000xg) to concentrate the liquid at the bottom.
5. Store the suspended plasmid at -20°C. The DNA is stable for at least one year from date of shipping when stored at -20°C.

**RefSeq:** [NM\\_001204387.1](#), [NP\\_001191316.1](#)

**RefSeq Size:** 4798 bp

**RefSeq ORF:** 2403 bp

**Locus ID:** 1739

**UniProt ID:** [Q12959](#)

**Cytogenetics:** 3q29

**Protein Families:** Druggable Genome

**Protein Pathways:** T cell receptor signaling pathway

**Gene Summary:** This gene encodes a multi-domain scaffolding protein that is required for normal development. This protein may have a role in septate junction formation, signal transduction, cell proliferation, synaptogenesis and lymphocyte activation. A multitude of transcript variants deriving from alternative splicing and the use of multiple alternate promoter have been observed, including some splice variants that may be specific to brain and other tissues. An upstream uORF may regulate translation at some splice variants of this gene. [provided by RefSeq, Sep 2018]