

Product datasheet for **RG233137**

TNFAIP3 (NM_001270508) Human Tagged ORF Clone

Product data:

Product Type:	Expression Plasmids
Product Name:	TNFAIP3 (NM_001270508) Human Tagged ORF Clone
Tag:	TurboGFP
Symbol:	TNFAIP3
Synonyms:	A20; AISBL; OTUD7C; TNFA1P2
Mammalian Cell Selection:	Neomycin
Vector:	pCMV6-AC-GFP (PS100010)
E. coli Selection:	Ampicillin (100 ug/mL)



[View online »](#)

ORF Nucleotide Sequence:

>RG233137 representing NM_001270508
 Red=Cloning site Blue=ORF Green=Tags(s)

TTTTGTAATACGACTCACTATAGGGCGGCCGGGAATTCGTCGACTGGATCCGGTACCGAGGAGATCTGCC
 GCC**GCGATCGCC**

ATGGCTGAACAAGTCCTTCTCAGGCTTTGTATTTGAGCAATATGCGGAAAGCTGTGAAGATACGGGAGA
 GAACTCCAGAAGACATTTTTAAACCTACTAATGGGATCATTTCATTTTTAAAACCATGCACCGATACAC
 ACTGGAATGTTTCAAGACTTCCAGTTTGTCTCAGTTTCGGGAGATCATCCACAAAGCCCTCATCGAC
 AGAAACATCCAGGCCACCCTGGAAAGCCAGAAGAACTCAACTGGTGTGAGAAAGTCCGGAAGCTTGTGG
 CGCTGAAAACGAACGGTACGGCAATTGCCTCATGCATGCCACTTCTCAGTACATGTGGGGCGTTGAGGA
 CACAGACTTGGTACTGAGGAAGGCGCTGTTGAGCAGCTCAAGGAAACAGACACACGCAACTTTAAATTC
 CGCTGGCAACTGGAGTCTCTCAAATCTCAGGAATTTGTTGAAACGGGGCTTTGCTATGATACTCGGAACT
 GGAATGATGAATGGACAATCTTATCAAATGGCTTCCACAGACACACCCATGGCCCGAAGTGGACTTCA
 GTACAACCTCACTGGAAGAAATACACATATTTGCTCTTGAACATCCTCAGAAGGCCAATCATTGTCATT
 TCAGACAAAATGCTAAGAAGTTTGAATCAGGTTCCAATTTGCGCCCTTTGAAAGTGGGTGGAATTTACT
 TGCCCTCTCCACTGGCCTGCCAGGAATGCTACAGATACCCCATTTGTTCTCGGCTATGACAGCCATCATT
 TGTACCCTTGGTGACCCTGAAGGACAGTGGGCCTGAAATCCGAGCTGTTCCACTTGTAAACAGAGACCGG
 GGAAGATTTGAAGACTTAAAAGTTCACCTTTTGACAGATCCTGAAAATGAGATGAAGGAGAAGCTTTAA
 AAGAGTACTTAATGGTGATAGAAATCCCGTCCAAGGCTGGGACCATGGCACAACATCTCATCAATGC
 CGCAAAGTTGGATGAAGCTAACTTACAAAAGAAATCAATCTGGTAGATGATTACTTTGAACTTGTTCAG
 CATGAGTACAAGAAATGGCAGGAAAACAGCGAGCAGGGGAGGAGAGGGGCACGCCAGAATCCCATGG
 AACCTTCCGTGCCCGCTTTCTCATGGATGTAATAATGTGAAACGCCCAACTGCCCTTCTTTCATGTC
 TGTGAACACCCAGCCTTTATGCCATGAGTGCTCAGAGAGGCGGCAAAAGAATCAAAAACAACTCCCAAAG
 CTGAACTCCAAGCCGGGCCCTGAGGGGCTCCCTGGCATGGCGCTCGGGGCTCTCGGGGAGAAGCCTATG
 AGCCCTTGGCGTGAACCCCTGAGGAGTCCACTGGGGGCTCATTGCGCCCAACCGACAGCACCCAGCCC
 TTTTCTGTTTCACTGAGACCACTGCCATGAAGTGCAGGAGCCCGGCTGCCCTTCCACTGAATGTGCAG
 CACAACGGATTTTGTGAACGTTGCCACAACGCCCGCAACTTACGCCAGCCAGCCCGAGACCACACAA
 GGCCTTGGATCCCGGAAGTGCCAAGCCTGCCTCCAGGATGTTACCAGGACATTTAATGGGATCTGCAG
 TACTTGTCTCAAAGGACTACAGCAGAGGCTCCTCCAGCCTCAGCACCAGCCTCCCTCCTTCTGTGCAC
 CAGCGTTCAAAGTCAAGTCCCTCGGGCTCGTCCGGAGCCCTCCCGCATTCTTGCACAGAGCTGGAA
 ACGACGCCCTGTGGTGCCTGTCTCAAGCTGCACGGACTCCTGGGGACAGGACGGGGACGAGCAAGTG
 CAGAAAAGCCGGCTGCGTGTATTTGGGACTCCAGAAAACAAGGGCTTTTGCACACTGTGTTTCATCGAG
 TACAGAGAAAACAACATTTTGTGCTGCCTCAGGGAAAGTCACTCCACAGCGTCCAGGTTCCAGAACA
 CCATTCGCTGCCTGGGGAGGGAATGCGGCACCCTTGAAGCACCATGTTTGAAGGATACTGCCAGAAGTG
 TTTTATTGAAGCTCAGAATCAGAGATTTTATGAGGCCAAAAGGACAGAAGAGCAACTGAGATCGAGCCAG
 CGCAGAGATGTGCTCGAACCACACAAAGCACCTCAAGGCCAAGTGCAGCCCGGGCTCCTGCAAGAACA
 TCCTGGCTGCCGAGCAGGAGCTCTGCATGGAGTGTGAGCATCCCAACCAGAGGATGGGCCCTGGGGC
 CCACCGGGTGAGCCTGCCCGCAAGACCCCAAGCAGCGTTGCCGGGCCCGCCTGTGATCATTTT
 GGCAATGCCAAGTGAACGGCTACTGCAACGAATGCTTTCAGTTCAAGCAGATGTATGGC

ACGCGTACGCGGCCGCTCGAG – GFP Tag – GTTTAA

Protein Sequence: >RG233137 representing NM_001270508
 Red=Cloning site Green=Tags(s)

```

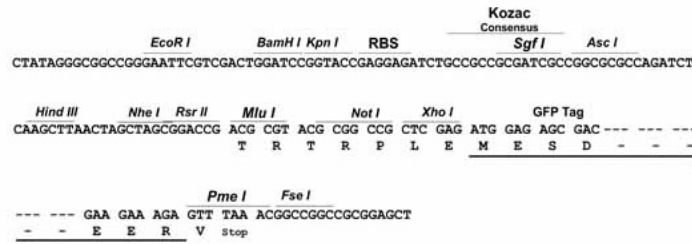
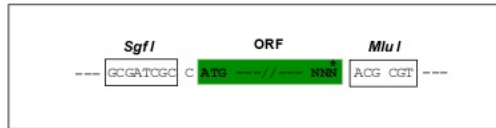
MAEQVLPQALYLSNMRKAVKIRERTPEDIFKPTNGIIHHFKTMHRYTLEMFRTCQFCPQFREIIHKALID
RNIQATLESQKLNWCREVRLVALKTNGDGNCLMHATSQYMWGVQDLDLVLKALFSTLKETDTRNFKF
RWQLESLSKQEFVETGLCYDTRNWNDEWDNLKIMASTDTPMARSGLQYNSLEEIHIFVLCNILLRPIIVI
SDKMLRSLESGSNFAPLKVGGIYLPWHWAQECYRYPIVLGYDSSHVFVPLVTLKDSGPEIRAVPLVNRDR
GRFEDLKVHFLTDPENEMKEKLLKEYLMVIEIPVQGDHGTTHLINAAKLDEANLPKEINLVDDYFELVQ
HEYKWKQENSEQGRREGHAQNPMEPSVSQLSLMDVKCETPNPCPFMSVNTQPLCHECSERRQKNQNLKP
LNSKPGPEGLPGMALGASRGEAYEPLAWNPEESTGGPHSAPPTAPSPFLFSETTAMKCRSPGCPFTLNVQ
HNGFCERCHNARQLHASHAPDHRHLDPGKCQACLQDVTRTFNGICSTCFKRTTAEASSLSTSLPPSCH
QRSKSDPSRLVRSPSPHSCHRAGNDAPAGCLSQAARTPGDRTGTSKCRKAGCVYGTPEKGFCTLCFIE
YRENKHFAAASGKVSPTASRFQNTIPCLGRECGTLGSTMFEQYQKCFIEAQNRFHAEKRTEEQLRSSQ
RRDVPRTTQSTSRPKCARASCKNILACRSEELCMECQHPNQRMGPGAHRGEPAPEDPPKQRCRAPACDHF
GNAKCNQYCNECFQFKQMYG
  
```

TRTRPLE - GFP Tag - V

Restriction Sites: SgfI-MluI

Cloning Scheme:

Cloning sites used for ORF Shuttling:

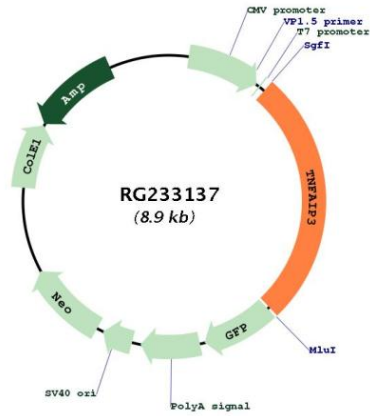


ACCN: NM_001270508

ORF Size: 2370 bp

OTI Disclaimer:	<p>Due to the inherent nature of this plasmid, standard methods to replicate additional amounts of DNA in E. coli are highly likely to result in mutations and/or rearrangements. Therefore, OriGene does not guarantee the capability to replicate this plasmid DNA. Additional amounts of DNA can be purchased from OriGene with batch-specific, full-sequence verification at a reduced cost. Please contact our customer care team at custsupport@origene.com or by calling 301.340.3188 option 3 for pricing and delivery.</p> <p>The molecular sequence of this clone aligns with the gene accession number as a point of reference only. However, individual transcript sequences of the same gene can differ through naturally occurring variations (e.g. polymorphisms), each with its own valid existence. This clone is substantially in agreement with the reference, but a complete review of all prevailing variants is recommended prior to use. More info</p>
OTI Annotation:	<p>This clone was engineered to express the complete ORF with an expression tag. Expression varies depending on the nature of the gene.</p>
Components:	<p>The ORF clone is ion-exchange column purified and shipped in a 2D barcoded Matrix tube containing 10ug of transfection-ready, dried plasmid DNA (reconstitute with 100 ul of water).</p>
Reconstitution Method:	<ol style="list-style-type: none">1. Centrifuge at 5,000xg for 5min.2. Carefully open the tube and add 100ul of sterile water to dissolve the DNA.3. Close the tube and incubate for 10 minutes at room temperature.4. Briefly vortex the tube and then do a quick spin (less than 5000xg) to concentrate the liquid at the bottom.5. Store the suspended plasmid at -20°C. The DNA is stable for at least one year from date of shipping when stored at -20°C.
RefSeq:	NM_001270508.2
RefSeq Size:	4753 bp
RefSeq ORF:	2373 bp
Locus ID:	7128
UniProt ID:	P21580
Cytogenetics:	6q23.3
Protein Families:	Druggable Genome
Protein Pathways:	NOD-like receptor signaling pathway
Gene Summary:	<p>This gene was identified as a gene whose expression is rapidly induced by the tumor necrosis factor (TNF). The protein encoded by this gene is a zinc finger protein and ubiquitin-editing enzyme, and has been shown to inhibit NF-kappa B activation as well as TNF-mediated apoptosis. The encoded protein, which has both ubiquitin ligase and deubiquitinase activities, is involved in the cytokine-mediated immune and inflammatory responses. Several transcript variants encoding the same protein have been found for this gene. [provided by RefSeq, Jul 2012]</p>

Product images:



Circular map for RG233137