

Product datasheet for **RG233134**

Liprin alpha 2 (PPFIA2) (NM_001220479) Human Tagged ORF Clone

Product data:

Product Type:	Expression Plasmids
Product Name:	Liprin alpha 2 (PPFIA2) (NM_001220479) Human Tagged ORF Clone
Tag:	TurboGFP
Symbol:	PPFIA2
Mammalian Cell Selection:	Neomycin
Vector:	pCMV6-AC-GFP (PS100010)
E. coli Selection:	Ampicillin (100 ug/mL)



[View online »](#)

ORF Nucleotide
Sequence:

>RG233134 representing NM_001220479
 Red=Cloning site Blue=ORF Green=Tags(s)

TTTTGTAATACGACTCACTATAGGGCGGCCGGAATTCGTGACTGGATCCGGTACCGAGGAGATCTGCC
 GCCGCGATCGCC

ATGAGACATTTAGAGGGTCAACTTGAAGAGAAGAATCAAGAACTTCAAAGAGCTAGGCAAAGAGAGAAAA
 TGAATGAGGAGCATAACAAGAGATTATCGGATACGGTTGATAGACTTCTGACTGAATCCAATGAACGCCT
 ACAACTACACTTAAAGGAAAGAATGGCTGCTCTAGAAGAAAAGAATGTTTTAATTCAAGAATCAGAACT
 TTCAGAAAAGAACTTGAAGAATCTTTACATGATAAGGAAAGATTAGCAGAAGAAATTGAAAAGCTGAGAT
 CTGAACCTTGACCAATTGAAAATGAGAACTGGCTCTTTAATTGAACCCACAATACCAAGAACTCATCTAGA
 CACCTCAGCTGAGTTGCGGTACTCAGTGGGATCCCTAGTGGACAGCCAGTCTGATTACAGAACTAA
 GTAATAAGAAGACCAAGGAGAGGCCGATGGGTGTGCGAAGAGATGAGCCAAAGGTGAAATCTCTGGGG
 ATCAGGAGTGAATAGAAGTCAACAGATTGGAGTACTAAGCAGCCACCCTTTTGAAGTGACTGAAAT
 GTCTGATATTGATGATGATGACAGAGAAAACAATTTTTAGCTCAATGGATCTTCTCTCTCCAAGTGGTCAT
 TCCGATGCCAGACGCTAGCCATGATGCTTCAGGAACAATTTGGATGCCATCAACAAAAGAAATCAGGCTAA
 TTCAGGAAGAAAAGAATCTACAGAGTTGCGTGTGAAGAAATTTGAAAATAGAGTGGCTAGTGTGAGCCT
 CGAAGGCCTGAATTTGGCAAGGGTCCACCCAGGTACCTCCATTACTGCCTCTGTTACAGCTTCATCGCTG
 GCCAGTTCATCTCCCCCAGTGGACTCAACTCAAAGCTCACCCCTCGAAGCCCTGCCAGGAAATGG
 ATCGGATGGGAGTCATGACACTGCCAAGTATCTGAGGAAACATCGGAGAAAGATTGCAGTTGTGGAAGA
 AGATGGTCGAGAGGACAAAGCAACAATTAATGTGAAACTTCTCCTCCTCCTACCCTAGAGCCCTCAGA
 ATGACTCACACTCTCCCTTCTCCTACCACAATGATGCTCGAAGTAGTTTATCTGTCTCTTTGAGCCAG
 AAAGCCTCGGGCTTGGTAGTGCCAACAGCAGCCAAGACTCTTTCACAAGCCCCCAAGAAAGAAAGAA
 CAAGTCTTCAATAGGACGTTTGGTTGGTAAAAAAGAAAAAGCTCGACTTGGGCAGCTCCGAGGCTTTATG
 GAGACTGAAGCTGCAGCTCAGGAGTCCCTGGGGTTAGGCAAACTCGGAACTCAAGCTGAGAAGGATCGAA
 GACTAAAGAAAAAGCATGAACTTCTTGAAGAAGCTCGGAGAAAGGGATTACCTTTTGGCCAGTGGGATGG
 GCCAAGTGTGGTGCATGGCTAGAGCTTTGGTTGGGAATGCCTGCGTGGTACGTGGCAGCCTGCCGAGCC
 AACGTGAAGAGTGGTCCATCATGTCTGCTTTATCTGACTGAGATCCAGAGAGAAATGGAAATCAGCA
 ATCCACTGCATCGCTTAAACTTCGATTAGCAATCCAGGAGATGGTTCCCTAACAAAGTCTTCAGCTCC
 TCCAACATCTCGAACTTGTCCGTTTTTCTACAGACCCTGGCTTATGGAGATATGAATCATGAGTGGATT
 GGAATGAATGGCTTCCCAGCTTGGGGTACCTCAGTACAGAAGTACTTTATGGAAATGCTTGGTAGATG
 CAAGAATGTTAGATCACCTAACAAAAAAGATCTCCGTGTCCATTTAAAAATGGTGGATAGTTTCCATCG
 AACAAAGTTTACAATATGGAATTATGTGCTTAAAGAGGTTGAATTATGACAGAAAAGAACTAGAAAAGAA
 CGGGAAGCAAGCCAACATGAAATAAAAGACGTGTTGGTGTGGAGCAATGACCGAGTTATTCGCTGGATAC
 AAGCAATTGGACTTCGAGAATATGCAAAATAATACTTGAGAGCGGTGTGCATGGCTCACTTATAGCCCT
 GGATGAAAACCTTGACTACAGCAGCTTAGCTTTATTATTACAGATTCCAACACAGAACACCCAGGCAAGG
 CAGATTCTTGAAGAGAAATAACAATAACCTCTTGGCCCTGGGAACTGAAAGGCGACTGGATGAAAGTATG
 ACAAGAAGTTCAGACGTGGATCAACCTGGAGAAGGCAGTTTCTCCTCGTGAAGTACATGGAATCAGCAT
 GATGCCTGGGTCTCAGAAACATTACCAGCTGGATTTAGGTTAACCACAACCTCTGGGCAGTCAAGAAAA
 ATGACAACAGATGATGGCGTCTTTTCAGTCTACTCTACC

ACGCGTACGCGGCCGCTCGAG - GFP Tag - GTTTAA

Protein Sequence: >RG233134 representing NM_001220479
 Red=Cloning site Green=Tags(s)

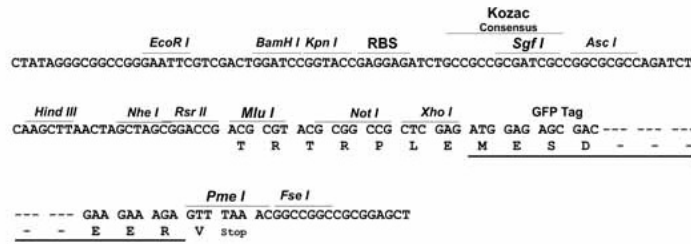
MRHLEGQLEEKNQELQRARQREKMNEEHNKRLSDTVDRLLTESNERLQLHLKERMAALEEKNVLIQESET
 FRKNLEESLHDKERLAEIEKLRSELDQLKMRGTSLIEPTIPRTHLDTSAELRYSVGSVDSQSDYRTTK
 VIRRRPRGRMGVRRDEPKVKSLGDHEWNRTQQIGVLSHPFESDTEMSDIDDDRETIFSSMDLLSPSGH
 SDAQTLAMMLQEQLDAINKEIRLIQEEKESTELRAEEIENRVASVSLEGLNLARVHPGTSITASVTASSL
 ASSSPPSGHSTPKLTPRSPAREMDRMGMVMTLPSDLRKHRRKIAVVEEDGREDKATIKCETSPPTPRALR
 MTHTLPPSSYHNDARSSLVSLPEPSLGLGSANSQDLSLHKAPKKKGIKSSIGRLLFGKKEKARLGQLRGFM
 ETEAAAQESLGLGKLGTAQEKDRRLKKKHELLEEARRGLPFAQWDGPTVVAWLELWLGMPAWYVAACRA
 NVKSGAIMSALSDTEIQREIGISNPLHRLKRLRLAIQEMVSLTSPSAPPTSRTCPVFLQTLAYGDMNHEWI
 GNEWLPGLPQYRSYFMECLVDARMLDHLTKKDLRVHLKMGVDFHRTSLQYGMCLKRLNYDRKELERR
 REASQHEIKDVLVWSNDRVIRWIAIGLREYANNILESGVHGSLIALDENFDYSSLALLLQIPTQNTQAR
 QILEREYNLLALGTERRLDESDDKNFRRGSTWRRQFPREVHGISMMPGSSETLPAGFRLTTTSGQSRK
 MTTDDGVFVSYST

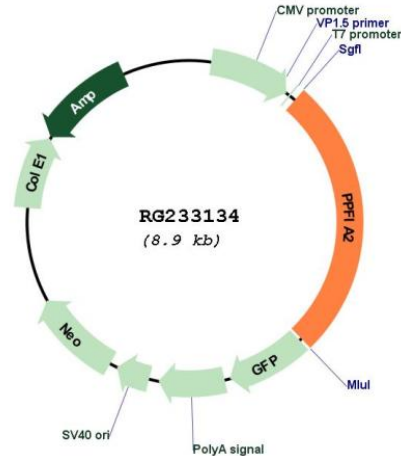
TRTRPLE - GFP Tag - V

Restriction Sites: SgfI-MluI

Cloning Scheme:

Cloning sites used for ORF Shuttling:



Plasmid Map:


ACCN: NM_001220479

ORF Size: 2349 bp

OTI Disclaimer: The molecular sequence of this clone aligns with the gene accession number as a point of reference only. However, individual transcript sequences of the same gene can differ through naturally occurring variations (e.g. polymorphisms), each with its own valid existence. This clone is substantially in agreement with the reference, but a complete review of all prevailing variants is recommended prior to use. [More info](#)

OTI Annotation: This clone was engineered to express the complete ORF with an expression tag. Expression varies depending on the nature of the gene.

Components: The ORF clone is ion-exchange column purified and shipped in a 2D barcoded Matrix tube containing 10ug of transfection-ready, dried plasmid DNA (reconstitute with 100 ul of water).

Reconstitution Method:

1. Centrifuge at 5,000xg for 5min.
2. Carefully open the tube and add 100ul of sterile water to dissolve the DNA.
3. Close the tube and incubate for 10 minutes at room temperature.
4. Briefly vortex the tube and then do a quick spin (less than 5000xg) to concentrate the liquid at the bottom.
5. Store the suspended plasmid at -20°C. The DNA is stable for at least one year from date of shipping when stored at -20°C.

RefSeq: [NM_001220479.3](#)

RefSeq Size: 4167 bp

RefSeq ORF: 2352 bp

Locus ID: 8499

UniProt ID: [O75334](#)

Cytogenetics: 12q21.31

Protein Families: Druggable Genome

Gene Summary: The protein encoded by this gene is a member of the LAR protein-tyrosine phosphatase-interacting protein (liprin) family. Liprins interact with members of LAR family of transmembrane protein tyrosine phosphatases, which are known to be important for axon guidance and mammary gland development. It has been proposed that liprins are multivalent proteins that form complex structures and act as scaffolds for the recruitment and anchoring of LAR family of tyrosine phosphatases. This protein has been shown to bind the calcium/calmodulin-dependent serine protein kinase (MAGUK family) protein (also known as CASK) and proposed to regulate higher-order brain functions in mammals. Alternative splicing results in multiple transcript variants. [provided by RefSeq, Sep 2013]