

Product datasheet for **RG233132**

PNPLA8 (NM_001256007) Human Tagged ORF Clone

Product data:

Product Type:	Expression Plasmids
Product Name:	PNPLA8 (NM_001256007) Human Tagged ORF Clone
Tag:	TurboGFP
Symbol:	PNPLA8
Synonyms:	IPLA2-2; IPLA2G; iPLA2gamma; MMLA; PNPLA-gamma
Mammalian Cell Selection:	Neomycin
Vector:	pCMV6-AC-GFP (PS100010)
E. coli Selection:	Ampicillin (100 ug/mL)



[View online »](#)

ORF Nucleotide Sequence:

>RG233132 representing NM_001256007
 Red=Cloning site Blue=ORF Green=Tags(s)

TTTTGTAATACGACTCACTATAGGGCGGCCGGGAATTCGTCGACTGGATCCGGTACCGAGGAGATCTGCC
 GCC**CGGATCGCC**

ATGTCTATTAATCTGACTGTAGATATATATATTTACCTCCTTAGTAATGCAAGAAGTGTTTGTGGGAAGC
 AGAGAAGCAAGCAACTGTATTTCTTGTCTCACCTAAGCATTACTGGAGGATAAGCCACATCAGTCTACA
 AAGAGGTTTTTCATACAAACATAAAGATGTAATGACCACAAAAGTGAAGCACATTCTTGACGTAAGCAC
 TGTTACTCTCCAAGCAACCATGGTTTACATATTGGGATTTTAAAAGTACTTTGAACTCTGTTTCAAAGGCTGTTTTGG
 TTACAAAAGTGAACATTTGTATGTCCCGTATTAAGTACTTTGAACTCTGTTTCAAAGGCTGTTTTGG
 CAATCAAAATGAAATGATTTACGTTTAGCTCAATTAAGCCAAGTCCCAAATTTAAGAAAAGTATCG
 GATAGTGGCTGGTTAAAACAGAAAACATCAAACAAGCCATCAAATCTCTGAAAAATATAGTGACAAAT
 CAGCAGAAAAGAGTCCTTTCCAGAAGAGAAAAGTCACATTATAGACAAAGAAGAAGATATAGGTAACG
 CAGTCTTTTTTATTACACAAGTTCTATAACCACAAAATTTGGAGACTCATTCTACTTTTTATCAAATCAT
 ATTAATTCATATTTCAAACGTAAGGAAAAATGTCTCAACAAAAGGAAAAATGAACATTTCCGGGACAAAT
 CAGAAGTTGAAGATAAAAAGGTAGAAGAGGGGAAATTAAGATCTCCAGATCCTGGCATCCTGGCTTATAA
 GCCAGGCTCAGAACTGTACATACGGTGGACAAGCCTACAAGTCTTCTGCGATACCTGATGTTCTTCAA
 GTTTCAACTAAACAAAGTATTGCTAACTTTCTTCTCGTCCCACGGAAGGTGTACAAGCTTATAGTAGGTG
 GTTATATTGGTGGACTTGTCCCAAATTAAGTATGATTCAAAGAGTCAGTCAGAAGAACAGGAAGAGCC
 TGCTAAAAGTATCGCAAGGGTGAATTTGATAACAGGACCCGGGCATTAGTTCAGGCATTAAGAAGAACA
 GAAAAGATTATCGCAAGGGTGAATTTGATAACAGGACCCGGGCATTAGTTCAGGCATTAAGAAGAACA
 CTGACCCAAAGCTCTGCATTACTAGGTTGAAGAAGTACTTTTTCATCTCTAGAAATTTCTGAAAGGAAA
 AGGAGTGGCTGTCAAGGAAAGAATTATTCATATTTATTACGACTGAGACAAATTAAGGATGAAACTCTT
 CAGGCTGCAGTTAGAGAAATTTGGCCCTAATTGGCTATGTGGATCCAGTGAAGGGAGAGGAATCCGAA
 TTCTCTCAATTGATGGTGGAGGAACAAGGGGCGTGGTGTCTCCAGACCTACGAAAATTAGTTGAACT
 TACTCAGAAGCCAGTTCATCAGCTCTTTGATTACATTTGGTGTAAAGCACAGGTGCCATATTAGCTTTC
 ATGTTGGGTTGTTTCATATGCCCTGGATGAATGTGAGGAACTTATCGAAAATTAGGATCAGATGTAT
 TTTCAAAAATGTCATTGTTGGAACAGTAAAAATGAGTTGGAGCCATGCATTTTATGACAGTCAAACATG
 GAAAAACATTCTAAGGATAGGATGGGATCTGCACTGATGATTGAAACAGCAAGAAACCCACATGTCCT
 AAGGTAGCTGCTGTAAGTACCATAGTAAATAGAGGGATAACACCCAAAGCTTTTGTGTTCCAGAACTATG
 GTCATTTTCTGGAATCAACTCTCATTATTTGGGAGGCTGTAGTATAAAATGTGGCAGGCCATTAGAGC
 CTCATCTGCTGCTCCAGGCTACTTTGCAGAAATATGCATTGGGAAATGATCTTCATCAAGATGGAGGTTTG
 CTTCTGAATAACCTTCGGCATTAGCTATGCATGAGTGTAAATGTCTTTGGCCAGATGTGCCGTTAGAGT
 GCATAGTATCCCTGGGCACTGGACGTTATGAGAGTGTGAGAAAACACGGTAACATACACAAGCTTGAA
 AACTAACTTTCTAATGTTATCAACAGTGTACAGATACAGAAGAAGTCCATATAATGCTTGATGGCCTG
 TTACCTCTGACACCTATTTAGATTCAATCCTGTAATGTGTGAAAACATACCTCTAGATGAAAGTCGAA
 ATGAAAAGCTGGATCAGCTGCAGTTGGAAGGGTTGAAATACATAGAAAAGAAATGAACAAAAATGAAAA
 AGTTGCAAAAATATTAAGTCAAGAAAAACAACCTGCAGAAAAATTAATGATTGGATAAAAATAAAAACT
 GATATGTATGAAGGACTTCCATTCTTTTCAAATTG

ACGCGTACGCGGCCGCTCGAG - GFP Tag - GTTTAA

Protein Sequence: >RG233132 representing NM_001256007
 Red=Cloning site Green=Tags(s)

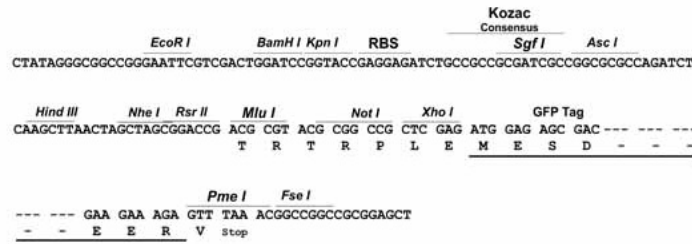
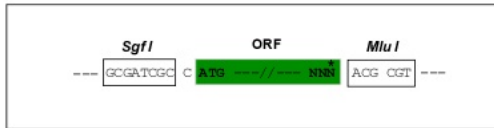
MSINLTVDIYIYLLSNARSVCGKQRSKQLYFLFSPKHYWRISHISLQRFHTNIIRCKWTKSEAHSCSKH
 CYSPSNHGLHIGILKLSTAPKGLTKVNICMSRIKSTLNSVSKAVFGNQNEMISRLAQFKPSSQILRKVS
 DSGWLKQKNIKQAIKSLKKYSDKSAEKSPFPEEKSHIIDKEEDIGKRSLFHYTSSITTKFGDSFYFLSNH
 INSYFKRKEKMSQQKENEHFRDKSELEDKKVEEGKLRSPDPGILAYKPGSESVHTVDKPTSPSAIPDVLQ
 VSTKQSIANFLSRPTEGVQALVGGYIGGLVPKLYDSKSQSEEQEEPACTDQAVSKDRNAEEKRSLQR
 EKIIARVSDNRTRALVQALRRITDPKLCITRVEELTFHLLFPEGKGVAVKERIIPYLLRRLRQIKDEL
 QAAVREILALIGYVDPVKGRGIRILSIDGGTRGVVALQTLRKLVELTQKPVHQLFDYICGVSTGAILAF
 MLGLFHMPLECEELYRKLGSDFVSNQVIVGTVMKMSWSHAFYDSQTWENILKDRMGALMIETARNPTCP
 KVAAVSTIVNRGITPKAFVFRNYGHFPGINSHYLGCCQYKMWQAIRASSAAPGYFAEYALGNDLHQDGG
 LLNNSALAMHECKLWPDVPLECIVSLGTGRYESDVRNTVTYTLKTKLSNVINSATDTEEVHIMLDGL
 LPPDITYFRNPVMCENIPLDESRNEKLDQLQLEGLKYIERNEQMKKVKVAKILSQEKTTLQKINDWIKLKT
 DMYEGLPFFSKL

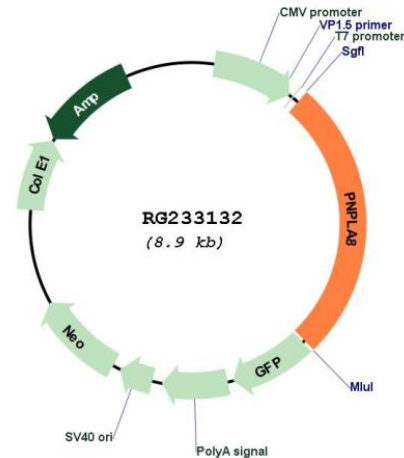
TRTRPLE - GFP Tag - V

Restriction Sites: SgfI-MluI

Cloning Scheme:

Cloning sites used for ORF Shuttling:



Plasmid Map:


ACCN: NM_001256007

ORF Size: 2346 bp

OTI Disclaimer: The molecular sequence of this clone aligns with the gene accession number as a point of reference only. However, individual transcript sequences of the same gene can differ through naturally occurring variations (e.g. polymorphisms), each with its own valid existence. This clone is substantially in agreement with the reference, but a complete review of all prevailing variants is recommended prior to use. [More info](#)

OTI Annotation: This clone was engineered to express the complete ORF with an expression tag. Expression varies depending on the nature of the gene.

Components: The ORF clone is ion-exchange column purified and shipped in a 2D barcoded Matrix tube containing 10ug of transfection-ready, dried plasmid DNA (reconstitute with 100 ul of water).

Reconstitution Method:

1. Centrifuge at 5,000xg for 5min.
2. Carefully open the tube and add 100ul of sterile water to dissolve the DNA.
3. Close the tube and incubate for 10 minutes at room temperature.
4. Briefly vortex the tube and then do a quick spin (less than 5000xg) to concentrate the liquid at the bottom.
5. Store the suspended plasmid at -20°C. The DNA is stable for at least one year from date of shipping when stored at -20°C.

RefSeq: [NM_001256007.3](#)

RefSeq Size: 4747 bp

RefSeq ORF: 2349 bp

Locus ID: 50640

UniProt ID: [Q9NP80](#)

Cytogenetics: 7q31.1

Gene Summary:

This gene encodes a member of the patatin-like phospholipase domain containing protein family. Members of this family are phospholipases which catalyze the cleavage of fatty acids from membrane phospholipids. The product of this gene is a calcium-independent phospholipase. Mutations in this gene have been associated with mitochondrial myopathy with lactic acidosis. Multiple transcript variants encoding different isoforms have been found for this gene. [provided by RefSeq, May 2015]