

Product datasheet for **RG233106**

ELMO1 (NM_001206482) Human Tagged ORF Clone

Product data:

Product Type:	Expression Plasmids
Product Name:	ELMO1 (NM_001206482) Human Tagged ORF Clone
Tag:	TurboGFP
Symbol:	ELMO1
Synonyms:	CED-12; CED12; ELMO-1
Mammalian Cell Selection:	Neomycin
Vector:	pCMV6-AC-GFP (PS100010)
E. coli Selection:	Ampicillin (100 ug/mL)



[View online »](#)

ORF Nucleotide Sequence:

>RG233106 representing NM_001206482.
 Blue=ORF Red=Cloning site Green=Tag(s)

```

GCTCGTTTAGTGAACCGTCAGAATTTTGTAAACGACTCACTATAGGGCGGCCGGGAATTCGTGACTG
GATCCGGTACCGAGGAGATCTGCCGCCACGATCGCC
ATGCCGCCACCCCGGACATCGTCAAGGTGGCCATAGAATGGCCGGGCGCCTACCCAAACTCATGGAA
ATTGATCAGAAAAAACCTGTCTGCAATAATAAAGGAAGTCTGTGATGGGTGGTCTCTTGCCAACCAT
GAATATTTTGCACTCCAGCATGCCGATAGTTCAAACCTCTATATCACAGAAAAGAACCGCAATGAGATA
AAAAATGGCACTATCCTTCGATTAACCACATCTCCAGCTCAGAACGCCAGCAGCTCCATGAACGAATC
CAGTCTCGAGTATGGATGCCAAGCTGGAAGCCCTGAAGGACTTGGCCAGCCTCTCCCGGGATGTCACG
TTTGCCAGGAGTTTATAAACCTGGACGGTATCTCTCCTCACGCAGATGGTAGAGAGCGGCACTGAG
CGATACCAGAAATTCAGAAGATCATGAAGCCTTGCTTTGGAGACATGCTGTCTTACCCTGACGGCC
TTCGTTGAGCTGATGGACCATGGCATAGTGTCTGGGATACATTTTCGGTGGCGTTCATTAAGAAGATA
GCAAGTTTGTGAACAAGTCAGCCATAGACATCTCGATCTGCAGCGTCTTGGCCATTTTGGAGTCG
ATGGTGTCAATAGCCATGACCTTACCAGAAAGTGGCGCAGGAGATCCCATCGGCCAGCTCATTCCA
CACCTGCAAGGGTCAGATCAAGAAATCCAAACCTATACTATTGCAGTGATTAATGCGCTTTTCTGAAG
GCTCCTGATGAGAGGAGGCAGGAGATGGCGAATATTTGGCTCAGAAGCAACTGCGTTCCATCATTTTA
ACACATGTCATCCGAGCCAGCGGGCCATCAACAATGAGATGGCGCACCAGCTGTATGTTCTACAAGTG
CTCACCTTTAACCTCCTGGAAGACAGGATGATGACCAAAATGGACCCCAAGGACCAGGCTCAGAGGGAC
ATCATATTTGAACCTCGAAGAATTGCTTTTGTGCTGAGTCTGAACCTAACAACAGCAGTGGCAGCATG
GAGAAACGCAAGTCCATGTACACGCGAGATTATAAGAAGCTTGGGTTTATTAATCATGTCAACCTGCC
ATGGACTTACGCAGACTCCACCTGGGATGTTGGCTCTGGACAACATGCTGTACTTTGCCAAGCACCAC
CAAGATGCCTACATCCGATTGTGCTTGAACAAGTGTGAGATCTTGAAGTGGGCGAGTTGCCTAGTGAGACC
CGCAGTAGTATAGAGCTGACCAAGATGCTATGTGAGATCTTGAAGTGGGCGAGTTGCCTAGTGAGACC
TGCAACGACTTCCACCCGATGTTCTTACCCACGACAGATCCTTTGAGGAGTTTTTCTGCATCTGTATC
CAGCTCCTGAACAAGACATGGAAGGAAATGAGGGCAACTTCTGAAGACTTCAACAAGGTAATGCAGGTG
GTGAAGGAGCAGGTTATGAGAGCACTTACAACCAAGCCTAGCTCCCTGGACCAGTTCAAGAGCAAACCTG
CAGAACCTGAGCTAAGTACGATCCTGAAAATCCGCCAGTCCGAGAGGATGAACCAGGAAGATTTCCAG
TCCCGCCGATTTTGGAACTAAAGGAGAAGATTACGCCAGAAATCTTAGAGCTGATCAAACAGCAACGC
CTGAACCGCTTGTGGAAGGACCTGCTTTAGGAACTCAATGCCCGCGGAGGCAAGACAAGTTTTGG
TATTGTGCGCTTTCGCCAAATCACAAGTCTGCATTACGGAGACTTAGAAGAGAGTCTCAGGGAGAA
GTGCCCCACGATTCCTTGCAGGACAACTGCCGGTGGCAGATATCAAAGCCGTGGTGACGGGAAAGGAC
TGCCCTCATATGAAAGAGAAAGGTGCCCTTAAACAAAACAAGGAGGTGCTTGAACCTCGCTTCTCCATC
TTGTATGACTCAAACCTGCAACTGAACTTCACTGCTCCTGACAAGCATGAGTACTGTATCTGGACGGAT
GGACTGAATGCGTACTCGGGAAGGACATGATGAGCGACTGACGCGGAATGACCTGGACACCCTGCTC
AGCATGGAATCAAGCTCCGCTCCTGGACCTGGAAAACATCCAGATCCCTGACGCACCTCCGCCGATT
CCCAAGGAGCCAGCAACTATGACTTCGTCTATGACTGTAAC
ACGCGTACGCGGCCGCTCGAG - GFP Tag - GTTTAAAC
  
```

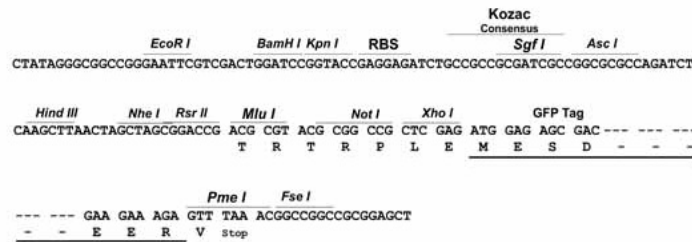
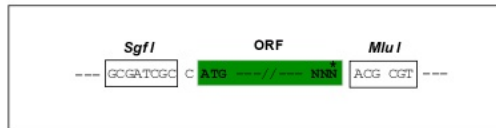
Protein Sequence: >Peptide sequence encoded by RG233106
 Blue=ORF Red=Cloning site Green=Tag(s)

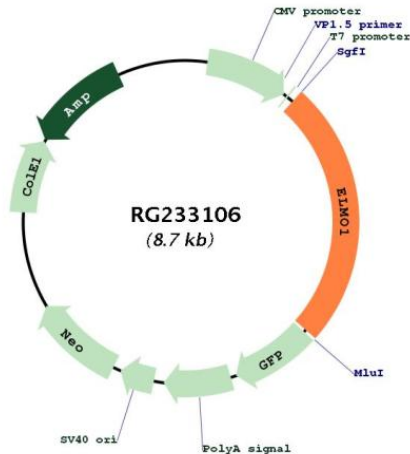
MPPPADIVKVAIEWPGAYPKLMEIDQKKPLSAIIKEVCDGWSLANHEYFALQHADSSNFYITEKNRNEI
 KNGTILRLTTSPAQNAQQLHERIQSSSMDAKLEALKDLASL SRDVTFAQEFINLDGISLLTQMVESGTE
 RYQKLQKIMKPCFGDMLSFTLTAFVELMDHGIVSWDTFSVAFIKKIASFVNKSAIDISILQRSLAILES
 MYLNSHDLYQKVAQEITIGQLIPHLQGSQEQEIQTYTIAVINALFLKAPDERRQEMANILAQKQLRSIIL
 THVIRAQRAINNEMAHQLYVLQVLTFNLLEDMMTKMDPQDQAQRDIIFELRRIAFDAESEPNSSGSM
 EKRSKSMYTRDYKKLGFINHVPAMDFTQTPPGMLALDNMLYFAKHHQDAYIRIVLENSREDKHECPFG
 RSSIELTKMLCEILKVGELPSETCNDFHPMFFTHDRSFEEFFCICIQLLNKTWKEMRATSEDFNKVMQV
 VKEQVMRALTTKPSLDQFKSKLQNL SYTEILKIRQSERMNQEDFQSRPILELKEIKQPEILELIKQQR
 LNRLVEGTCFRKLNARRRQDKFWYCRLSPNHKVLHYGDLEES PQGEVPHDSLQDKLPVADIKAVVTGKD
 CPHMKEGALKQNKVELELAFSILYDSNCQLNF IAPDKHEYCIWTDGLNALLGKDMMSDL TRNDLDTLL
 SMEIKLRLLDLENIQIPDAPPIPKEPSNYDFVYDCN
 TRTRPLEMESDESGLPAMEIECRITGTLNGVEFELVGGGEGTPEQGRMTNKMKSTKGALTFSPYLLSHV
 MGYGFYHFGTYPSTYENPFLHAINNGGYTNRIEKYEDGGVLHVFSYRYEAGRVIGDFKVMGTGFPED
 SVIFTDKIIRSNAIVEHLHPMGDNDLDGSFTRTFLRDGGYSSVVD SHMHFKSAIHPSILQNGGPMFA
 FRRVEEDHSNTELGIVEYQHAFKTPDADAGEERV

Restriction Sites: SgfI-MluI

Cloning Scheme:

Cloning sites used for ORF Shuttling:



Plasmid Map:


ACCN: NM_001206482

ORF Size: 2181 bp

OTI Disclaimer: The molecular sequence of this clone aligns with the gene accession number as a point of reference only. However, individual transcript sequences of the same gene can differ through naturally occurring variations (e.g. polymorphisms), each with its own valid existence. This clone is substantially in agreement with the reference, but a complete review of all prevailing variants is recommended prior to use. [More info](#)

OTI Annotation: This clone was engineered to express the complete ORF with an expression tag. Expression varies depending on the nature of the gene.

Components: The ORF clone is ion-exchange column purified and shipped in a 2D barcoded Matrix tube containing 10ug of transfection-ready, dried plasmid DNA (reconstitute with 100 ul of water).

Reconstitution Method:

1. Centrifuge at 5,000xg for 5min.
2. Carefully open the tube and add 100ul of sterile water to dissolve the DNA.
3. Close the tube and incubate for 10 minutes at room temperature.
4. Briefly vortex the tube and then do a quick spin (less than 5000xg) to concentrate the liquid at the bottom.
5. Store the suspended plasmid at -20°C. The DNA is stable for at least one year from date of shipping when stored at -20°C.

RefSeq Size: 5539 bp

RefSeq ORF: 2184 bp

Locus ID: 9844

UniProt ID: [Q92556](#)

Cytogenetics: 7p14.2-p14.1

Protein Pathways: Chemokine signaling pathway

MW: 83.8 kDa

Gene Summary: This gene encodes a member of the engulfment and cell motility protein family. These proteins interact with dedicator of cytokinesis proteins to promote phagocytosis and cell migration. Increased expression of this gene and dedicator of cytokinesis 1 may promote glioma cell invasion, and single nucleotide polymorphisms in this gene may be associated with diabetic nephropathy. Alternative splicing results in multiple transcript variants. [provided by RefSeq, Aug 2013]