

Product datasheet for **RG233101**

PNPLA8 (NM_001256009) Human Tagged ORF Clone

Product data:

Product Type:	Expression Plasmids
Product Name:	PNPLA8 (NM_001256009) Human Tagged ORF Clone
Tag:	TurboGFP
Symbol:	PNPLA8
Synonyms:	IPLA2-2; IPLA2G; iPLA2gamma; MMLA; PNPLA-gamma
Mammalian Cell Selection:	Neomycin
Vector:	pCMV6-AC-GFP (PS100010)
E. coli Selection:	Ampicillin (100 ug/mL)



[View online »](#)

ORF Nucleotide
Sequence:

>RG233101 representing NM_001256009
Red=Cloning site Blue=ORF Green=Tags(s)

TTTTGTAATACGACTCACTATAGGGCGGCCGGAATTCGTCGACTGGATCCGGTACCGAGGAGATCTGCC
GCC**CGGATCGCC**

ATGTCTATTAATCTGACTGTAGATATATATATTTACCTCCTAGTAATGCAAGAAGTGTTTGTGGGAAGC
AGAGAAGCAAGCAACTGTATTTCTTGTCTCACCTAAGCATTACTGGAGGATAAGCCACATCAGTCTACA
AAGAGGTTTTTCATACAAACATAAAGATGTAATGACCACAAAGTGAAGCACATTCTTGACAGTAAGCAC
TGTTACTCTCCAAGCAACCATGGTTTACATATTGGGATTTTGAACCTTAGCACTTCTGCTCCCAAGGGAC
TTACAAAAGTGAACATTTGTATGTCCCGTATTAAGTACTTTGAACTCTGTTTCAAAGGCTGTTTTTGG
CAATCAAATGAAATGATTTACGTTTAGCTCAATTAAGCCAAGTCCCAAATTTAAGAAAAGTATCG
GATAGTGGCTGGTTAAAACAGAAAACATCAAACAAGCCATCAAATCTCTGAAAAATATAGTGACAAAT
CAGCAGAAAAGAGTCCTTTCCAGAAGAGAAAAGTCACATTATAGACAAAGAAGAAGATATAGGTAACG
CAGTCTTTTTTATTACACAAGTTCTATAACCACAAAATTTGGAGACTCATTCTACTTTTTATCAAATCAT
ATTAATTCATATTTCAAACGTAAGGAAAAATGTCTCAACAAAAGGAAAAATGAACATTTCCGGGACAAAT
CAGAACTTGAAGATAAAAAGGTAGAAGAGGGGAAATTAAGATCTCCAGATCCTGGCATCCTGGCTTATAA
GCCAGGCTCAGAACTGTACATACGGTGGACAAGCCTACAAGTCTTCTGCGATACCTGATGTTCTTCAA
GTTTCAACTAAACAAAGTATTGCTAACTTTCTTCTCGTCCCACGGAAGGTGTACAAGCTTATAGTAGGTG
GTTATATTGGTGGACTTGTCCCAAATTAAGTATGATTCAAAGAGTCAGTCAGAAGAACAGGAAGAGCC
TGCTAAAAGTATCGCAAGGGTGAATTTGATAACAGGACCCGGGCATTAGTTCAGGCATTAAGAAGAACA
CTGACCCAAAGCTCTGCATTACTAGGTTGAAGAAGTACTTTTTCATCTCTAGAATTTCTGAAGGAAA
AGGAGTGGCTGTCAAGGAAAGAATTATTCCATATTTATTACGACTGAGACAAATTAAGGATGAAACTCTT
CAGGCTGCAGTTAGAGAAATTTGGCCCTAATTGGCTATGTGGATCCAGTGAAGGGAGAGGAATCCGAA
TTCTCTCAATTGATGGTGGAGGAACAAGGGCGTGGTGTCTCCAGACCTACGAAAATTAGTTGAACT
TACTCAGAAGCCAGTTCATCAGCTCTTTGATTACATTTGGTGTAAAGCACAGGTGCCATATTAGCTTTC
ATGTTGGGTTGTTTCATATGCCCTGGATGAATGTGAGGAACCTTATCGAAAATTAGGATCAGATGTAT
TTTCACAAAATGTCATTGTTGGAACAGTAAAAATGAGTTGGAGCCATGCATTTTATGACAGTCAAACATG
GGAAAACATTCTAAGGATAGGATGGGATCTGCACTGATGATTGAAACAGCAAGAAACCCACATGTCCT
AAGGTAGCTGCTGATGGAGGTTTGTCTGAATAACCCTTCGGCATTAGCTATGCATGAGTGAAATGTC
TTTGGCCAGATGTCCGTTAGAGTGCATAGTATCCCTGGCACTGGACGTTATGAGAGTGATGTGAGAAA
CACGGTAACATACACAAGCTTGAAGTAACTTTCTAATGTTATCAACAGTGCTACAGATACAGAAGAA
GTCCATATAATGCTTGTATGGCCTGTACCTCCTGACACCTATTTTAGATTCAATCCTGTAATGTGTGAAA
ACATACCTCTAGATGAAAGTCGAAATGAAAAGCTGGATCAGCTGCAGTTGGAAGGTTGAAATACATAGA
AAGAAATGAACAAAAATGAAAAAGTTGCAAAAATATTAAGTCAAGAAAAACAACCTCTGCAGAAAATT
AATGATTGGATAAAAATAAAAACTGATATGTATGAAGGACTTCCATTCTTTCAAATTTG

ACGCGTACGCGGCCGCTCGAG - GFP Tag - GTTTAA

Protein Sequence: >RG233101 representing NM_001256009
 Red=Cloning site Green=Tags(s)

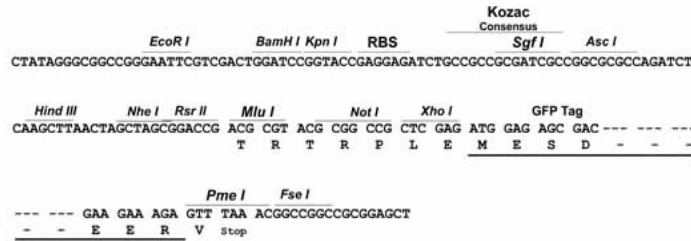
MSINLTVDIYIYLLSNARVCGKQRSKQLYFLFSPKHYWRISHISLQRFHTNIIRCKWTKSEAHSCSKH
 CYSPSNHGLHIGILKLSTSAPKGLTKVNICMSRIKSTLNSVSKAVFGNQNEMISRLAQFKPSSQILRKVS
 DSGWLKQKNIKQAIKSLKKYSDKSAEKSPFPEEKSHIIDKEEDIGKRSLFHYTSSITTKFGDSFYFLSNH
 INSYFKRKEKMSQKENEHFRDKSELEDKKVEEGKLRSPDPGILAYKPGSESVHTVDKPTSPSAIPDVLQ
 VSTKQSIANFLSRPTQALVGGYIGGLVPKLYDSKSQSEEQEPAKTDQAVSKDRNAEEKRSLQR
 EKIIARVSIIDNRTRALVQALRRTTDPKLCITRVEELTFHLLFPEEGKGVAVKERIIPYLLRRLRQIKDEL
 QAAVREILALIGYVDPVKGRGIRILSIDGGTRGVVALQTLRKLVELTQKPVHQLFDYICGVSTGAILAF
 MLGLFHMPLECEELYRKLGSDFVSNQVIVGTVMKMSWSHAFYDSQTWENILKDRMGALMIETARNPTCP
 KVAADGGLLLNPSALAMHECKLWPDVPLECIVSLGTGRYEDVRNTVTYTSKTKLSNVINSATDTEE
 VHIMLDGLLPPDTYFRFNPVMCENIPLDESRNEKLDQLQLEGLKYIERNEQKMKKVKAKILSQEKTTLQKI
 NDWIKLKTDMYEGLPFFSKL

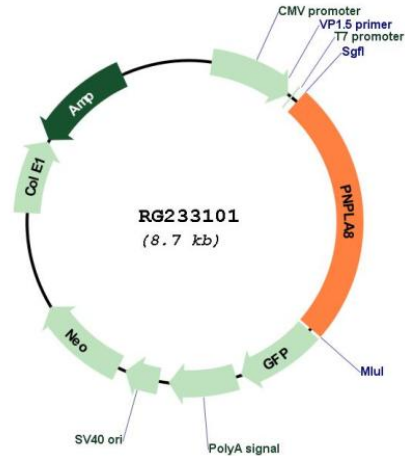
TRTRPLE - GFP Tag - V

Restriction Sites: SgfI-MluI

Cloning Scheme:

Cloning sites used for ORF Shutting:



Plasmid Map:


ACCN: NM_001256009

ORF Size: 2160 bp

OTI Disclaimer: The molecular sequence of this clone aligns with the gene accession number as a point of reference only. However, individual transcript sequences of the same gene can differ through naturally occurring variations (e.g. polymorphisms), each with its own valid existence. This clone is substantially in agreement with the reference, but a complete review of all prevailing variants is recommended prior to use. [More info](#)

OTI Annotation: This clone was engineered to express the complete ORF with an expression tag. Expression varies depending on the nature of the gene.

Components: The ORF clone is ion-exchange column purified and shipped in a 2D barcoded Matrix tube containing 10ug of transfection-ready, dried plasmid DNA (reconstitute with 100 ul of water).

Reconstitution Method:

1. Centrifuge at 5,000xg for 5min.
2. Carefully open the tube and add 100ul of sterile water to dissolve the DNA.
3. Close the tube and incubate for 10 minutes at room temperature.
4. Briefly vortex the tube and then do a quick spin (less than 5000xg) to concentrate the liquid at the bottom.
5. Store the suspended plasmid at -20°C. The DNA is stable for at least one year from date of shipping when stored at -20°C.

RefSeq: [NM_001256009.3](#)

RefSeq Size: 4515 bp

RefSeq ORF: 2163 bp

Locus ID: 50640

UniProt ID: [Q9NP80](#)

Cytogenetics: 7q31.1

Gene Summary: This gene encodes a member of the patatin-like phospholipase domain containing protein family. Members of this family are phospholipases which catalyze the cleavage of fatty acids from membrane phospholipids. The product of this gene is a calcium-independent phospholipase. Mutations in this gene have been associated with mitochondrial myopathy with lactic acidosis. Multiple transcript variants encoding different isoforms have been found for this gene. [provided by RefSeq, May 2015]