

## Product datasheet for **RG233097**

### **ADGRE1 (NM\_001256255) Human Tagged ORF Clone**

#### **Product data:**

Product Type:	Expression Plasmids
Product Name:	ADGRE1 (NM_001256255) Human Tagged ORF Clone
Tag:	TurboGFP
Symbol:	ADGRE1
Synonyms:	EMR1; TM7LN3
Mammalian Cell Selection:	Neomycin
Vector:	pCMV6-AC-GFP (PS100010)
E. coli Selection:	Ampicillin (100 ug/mL)



[View online »](#)

**ORF Nucleotide Sequence:**

>RG233097 representing NM\_001256255  
 Red=Cloning site Blue=ORF Green=Tags(s)

TTTTGTAATACGACTCACTATAGGGCGGCCGGGAATTCGTCGACTGGATCCGGTACCGAGGAGATCTGCC  
 GCC**CGGATCGCC**

ATGCGTGGCTTCAACCTGCTCCTTTCTGGGGATGTTGTGTTATGCACAGCTGGGAAGGGCACATAAGAC  
 CCACACGGAAACCAACACAAAGGGTAATAACTGTAGAGACAGTACCTTGTGCCAGCTTATGCCACCTG  
 CACCAATACAGTGGACAGTTACTATTGCGCTTGCAAAACAAGGCTTCTGTCCAGCAATGGGCAAAATCAC  
 TTCAAGGATCCAGGAGTGCAGTGCAAAGATATTGATGAATGTTCTCAAAGCCCCAGCCCTGTGGTCTTA  
 ACTCATCTGCAAAAACCTGTCAGGGAGGTACAAGTGCAGCTGTTTAGATGGTTTCTCTTCTCCACTGG  
 AAATGACTGGGTCCAGGAAAGCCGGGCAATTTCTCTGTACTGATATCAATGAGTGCCTCACCAGCAGG  
 GTTCTCTTCAAATGTAAGGAAGATGTGATACCCGATAATAAGCAGATCCAGCAATGCCAAGAGGGAACCG  
 CAGTGAACCTGCATATGTCCTTTTGTGCACAAATAAATAACATCTTCAGCGTTCTGGACAAAGTGTG  
 TGAATAAAAACGACCGTAGTTTCTCTGAAGAATAACAAGTGCAGCTTTTGTCCCTGTGCTTAAACAATA  
 TCCACGTGGACTAAATTCACCAAGGAAGAGACGTCCTCCCTGGCCACAGTCTTCCCTGGAGAGTGTGGAAA  
 GCATGACACTGGCATCTTTTGGAAACCCTCAGCAAAATCACTCCGGCTGTTCCGACGGAATACTTAGA  
 CATTGAGAGCAAAGTTATCAACAAGAATGCAGTGAAGAGAATGTGACGTTGGACTTGGTAGCCAAGGGG  
 GATAAGATGAAGATCGGGTGTCCACAATTGAGGAATCTGAATCCACAGAGACCACTGGTGTGGCTTTTG  
 TCTCTTTGTGGGCATGGAATCGGTTTTAAATGAGCGCTTCTTCAAAGACCACAGGCTCCCTTGACCAC  
 CTCTGAGATCAAGCTGAAGATGAATTCTCGAGTCGTTGGGGCATAATGACTGGAGAGAAGAAAGACGGC  
 TTCTCAGATCCAATCATCTACACTCTGGAGAACATTGAGCAAAAGCAGAAGTTTGGAGGGCCATCTGTG  
 TTTCTGGAGCACTGATGTGAAGGGTGAAGATGGACATCCTTTGGCTGTGTGATCCTGGAAGCTTCTGA  
 GACATATACCATCTGCAGCTGTAATCAGATGGCAAATCTTGCCGTTATCATGGCGTCTGGGGAGCTCACG  
 ATGGACTTTTCTGTACATCATTAGCCATGTAGGCATTATCATCTCCTTGGTGTGCCTCGTCTTGCCCA  
 TCGCCACCTTTCTGCTGTGTCGCTCCATCCGAAATCACAAACCTACCTCCACCTGCACCTCTGCGTGTG  
 TCTCCTTTGGCGAAGACTCTTCTCCTCGCCGGTATACACAAGACTGACAACAAGATGGGCTGCGCCATC  
 ATCGCGGGCTTCTGCACTACCTTTTCTTGCCTGCTTCTTGGATGCTGGTGGAGGCTGTGATACTGT  
 TCTTGATGGTCAGAAACCTGAAGGTGGTGAATTACTTCAGCTCTCGCAACATCAAGATGCTGCACATCTG  
 TGCCCTTTGGTTATGGGCTGCCGATGCTGGTGGTGGTATCTCTGCCAGTGTGCAGCCACAGGCTATGGA  
 ATGCATAATCGTCTGGCTGAATACAGAGACAGGGTTTCTGGAGTTTCTTGGGGCCAGTTTGCACAG  
 TTATAGTGATCAACTCCCTTCTCCTGACCTGGACCTTGTGGATCCTGAGGCAGAGGCTTCCAGTGTAA  
 TGCCGAAGTCTCAACGCTAAAAGACACCAGGTTACTGACCTTCAAGGCCTTTGCCAGCTTTCATCCTG  
 GGCTGCTCCTGGGTGCTGGGCATTTTTAGATTGGACCTGTGGCAGGTGTGATGGCTTACCTGTTACCA  
 TCATCAACAGCCTGCAGGGGGCTTTCATCTTCTCATCCACTGTCTGCTCAACGGCCAGGTACGAGAAGA  
 ATACAAGAGGTGGATCACTGGGAAGACGAAGCCAGCTCCAGTCCCAGACCTCAAGGATCTTGCTGTCC  
 TCCATGCCATCCGCTTCCAAGACGGGT

**ACGCGT**ACGCGGCCGCTCGAG - GFP Tag - GTTTAA

**Protein Sequence:** >RG233097 representing NM\_001256255  
 Red=Cloning site Green=Tags(s)

MRGFNLLLFWGCCVMHSEWEGHIRPTRKPNKGNCRDSTLCPAYATCTNTVDSYYCACKQGFSSNGQNH  
 FKDPGVRCKDIDECSQSPQPCGPNSSCKNL SGRYKCSCLDGFSSPTGNDWVPGKPGNF SCTDINECLTSR  
 VLFKCKEDVIPDNKQIQCCQEGTAVKPAYVSFCAQINNIFSVLDKVCENKTTVVSLKNTTESFVPLKQI  
 STWTKFTKEETSSLATVFLESVESMTLASFWKPSANITPAVRTEYLDIESKVINKECSEENVTLDLVAKG  
 DKMKIGCSTIEESESTETTGVAFVSFVGMEVLNERFFKDHQAPLTTSEIKLKMNSRVVGGIMTGEKKDG  
 FSDPIIYTLENIQPKQKFERPICVSWSTDVKGGRWTSFGCVILEASETYTICSCNQMANLAVIMASGELT  
 MDFSLYIISHVGIISLVLVLAIAIATFLLCRSIRNHNTYLHLHLVCVLLAKTLFLAGIHKTDNKMGC  
 IAGFLHYLFLACFFWMLVEAVILFLMVRNLKVVNYFSSRNKMLHICAFGYGLPMLVVVISASVQPQGYG  
 MHNRCWLNTEGFIWSFLGPVCTVIVINSLLLTWTLWILRQRLSSVNAEVSTLKDTRLLTFKAFAQLFIL  
 GCSWVLGIFQIGPVAGVMAYLFTIINSLQGAIFLIHCLLNGQVREEYKRWITGKTKPSSQSQTSRILLS  
 SMPSASKTG

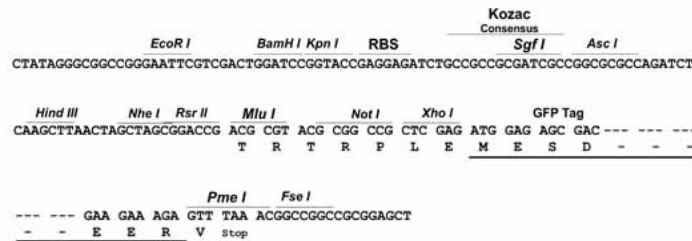
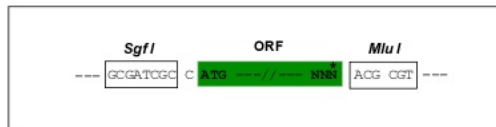
TRTRPLE - GFP Tag - V

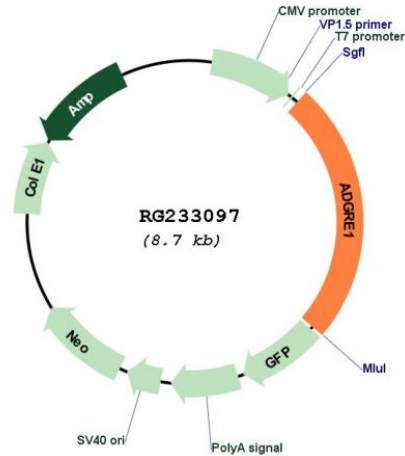
**Restriction Sites:**

SgfI-MluI

**Cloning Scheme:**

Cloning sites used for ORF Shutting:



**Plasmid Map:**


**ACCN:** NM\_001256255

**ORF Size:** 2127 bp

**OTI Disclaimer:** The molecular sequence of this clone aligns with the gene accession number as a point of reference only. However, individual transcript sequences of the same gene can differ through naturally occurring variations (e.g. polymorphisms), each with its own valid existence. This clone is substantially in agreement with the reference, but a complete review of all prevailing variants is recommended prior to use. [More info](#)

**OTI Annotation:** This clone was engineered to express the complete ORF with an expression tag. Expression varies depending on the nature of the gene.

**Components:** The ORF clone is ion-exchange column purified and shipped in a 2D barcoded Matrix tube containing 10ug of transfection-ready, dried plasmid DNA (reconstitute with 100 ul of water).

**Reconstitution Method:**

1. Centrifuge at 5,000xg for 5min.
2. Carefully open the tube and add 100ul of sterile water to dissolve the DNA.
3. Close the tube and incubate for 10 minutes at room temperature.
4. Briefly vortex the tube and then do a quick spin (less than 5000xg) to concentrate the liquid at the bottom.
5. Store the suspended plasmid at -20°C. The DNA is stable for at least one year from date of shipping when stored at -20°C.

**RefSeq:** [NM\\_001256255.2](#)

**RefSeq Size:** 2630 bp

**RefSeq ORF:** 2130 bp

<b>Locus ID:</b>	2015
<b>UniProt ID:</b>	<a href="#">Q14246</a>
<b>Cytogenetics:</b>	19p13.3-p13.2
<b>Protein Families:</b>	Druggable Genome, Transmembrane
<b>Gene Summary:</b>	<p>This gene encodes a protein that has a domain resembling seven transmembrane G protein-coupled hormone receptors (7TM receptors) at its C-terminus. The N-terminus of the encoded protein has six EGF-like modules, separated from the transmembrane segments by a serine/threonine-rich domain, a feature reminiscent of mucin-like, single-span, integral membrane glycoproteins with adhesive properties. Multiple alternatively spliced transcript variants encoding different isoforms have been found for this gene. [provided by RefSeq, Jan 2012]</p>