

## Product datasheet for **RG233087**

### **RGL2 (NM\_001243738) Human Tagged ORF Clone**

#### **Product data:**

Product Type:	Expression Plasmids
Product Name:	RGL2 (NM_001243738) Human Tagged ORF Clone
Tag:	TurboGFP
Symbol:	RGL2
Synonyms:	HKE1.5; KE1.5; RAB2L
Mammalian Cell Selection:	Neomycin
Vector:	pCMV6-AC-GFP (PS100010)
E. coli Selection:	Ampicillin (100 ug/mL)



[View online »](#)

**ORF Nucleotide Sequence:**

>RG233087 representing NM\_001243738  
 Red=Cloning site Blue=ORF Green=Tags(s)

TTTTGTAATACGACTCACTATAGGGCGGCCGGAATTCGTCGACTGGATCCGGTACCGAGGAGATCTGCC  
 GCC**CGCATCGCC**

ATGCCTCCCCACGTTCTCCCGACGGCTCCGAGCTGGCACTCTGGAGGCCCTGGTCAGACACCTACTGG  
 ATACCCGGACATCAGGGACTGATGTGAGCTTCATGTGAGCCTTCCTGGCTACCCACCGGGCCTTCACCTC  
 CACGCCTGCCTTCTAGGGCTTATGGCTGACAGGCTGGAAGCCCTTGAATCTCATCTACCAGCAACTA  
 GAGAGGACAACAGAGGTAGCCATCTCTGTACTGTCAACCTGGCTGGCCTCTACCCTGAGGATTTTGGCT  
 CTGAGGCCAAGGGTCAGCTTGACCGGCTTGAGAGCTTCTACTTCAGACAGGGTATGCAGCAGGGAAGGG  
 TGTTGGGGGGGGCAGCGCTGACCTCATCCGCAATCTCCGGTCCCGGGTGGACCCACGGCCCCGACCTT  
 CCTAAGCCCTGGCCCTCCCGGCGATCCCCCTGCTGACCCACGGATGCTCTGGTGTCTCTCGCTGACC  
 ACTTGGCCGAACAGCTGACCCTGTAGATGCGGAACCTTTTCTCAATTTGATCCCCTCTCAGTGCCTGGG  
 AGGCCTGTGGGGTACAGAGACCGGCCAGGACATTCTCACCTCTGCCATCTGTCCGAGCTACTGTCACA  
 CAGTTTAAACAAGGTGGCAGGGGCGAGTGGTTAGTTCTGTCTGGGGCTACTTCCACTGGAGAGGGACCTG  
 GGGAGGTGACCATACGGCCACTCCGTCCCCACAGAGGGCCCGGCTCTGGAGAAGTGGATCCCGGTGGC  
 AGAGGAGTGCCGGCTGCTCCGAACTTCTCTTCAAGTTTATGCCGTGGTGTGAGCCCTGCAGTCCAGCCCC  
 ATCCACAGGCTTCGGGCAGCCTGGGGGGAAGCAACCAGGGACAGCCTCAGAGTCTTTTCCAGCCTCTGCC  
 AGATTTTCTCCGAGGAGGATAATTATCCAGAGTCCGGAGCTGCTGTCGAGGAGGTGAAGCTGCAGTC  
 TCCTCTGGAGCCACACTCCAAGAAGGCCCGAGGCTGGCTCCCGGGTGGGGTGTGGTCCCATACTT  
 GGCACCTTCTGAAGGACCTTGTGATGCTGGATGCAGCCTCCAAGGATGAGTTGGAGAATGGATACATCA  
 ATTTTGAACGCGGAGGAAGGAGTTTGCAGTCTTTCTGAGTTGCGACGGCTCCAGAATGAATGTCGTGG  
 CTATAACCTCCAACCTGACCATGATATCCAGAGGTGGCTACAGGGGCTCCGGCCACTGACAGAGGCTCAG  
 AGCCATCGTGATCCTGTGAGGTGGAGCCACTGGTTCAGTGACCCTCTGCCACAGGGTGTTCGGC  
 CAACATTTGGTCATCTCGCAGTGGACAGAGGTTTTGGGCTCTGTTGGGGTCCCTACCCGCTTGTGTCTG  
 TGACCGGCCAGTACTGGGGGAGATGAGGCGCCTACAACCTCTGCTCTCTGCTGACTCGGCTGGCCAG  
 CACATGAAGTGGCCATCTGTCTCGTCACTAGACTCTGCCTTGAAAGCAGTCCATCCCTGCACAGTCCAG  
 CTGACCCAGCCACCTCTCCACCAGCCTCTCCCTAGGCCTTCTCGAGGTACCCGCCGCTCAGCCTC  
 CTGTGGCTCCCGCTGAGTGGGGTGCAGAAGAGGCTCCGGGGGACTGGATATGGGGGAGAGGGATCT  
 GGGCCAGGGGCTCTGATTGCCGTATCATCCGAGTCCAGATGGAGTTGGGGGAAGATGGCAGTGTCTATA  
 AGAGCATTTTGGTGACAAGCCAGGACAAGGCTCCAAGTGTATCAGTCTGTCCTTAAGAAAAACAATCG  
 TGAATCTGCAAGTGGCTTCAAGATGAGCTGGTACAGCTGCTACAGGGGAGCGAGAGTACTATCCCA  
 GCCTCGGCTAATGATTCTACGCCATGGATGGAGCTTACACGATTTCTCTGCGGCAGCGGCGAAGGT  
 CCTCTACTGCTACACCTGGCGTACCAAGTGGCCGCTGCTCCTCAGGAACCTCCCGAGTGGGGAGGAGG  
 GGGCTCTTTCCAGGATCAAGGCCACAGGGAGGAAGATTGCACGGGCACTGTTT

**ACGCGT**ACGCGGCCGCTCGAG - GFP Tag - GTTTAA

Protein Sequence: >RG233087 representing NM\_001243738  
 Red=Cloning site Green=Tags(s)

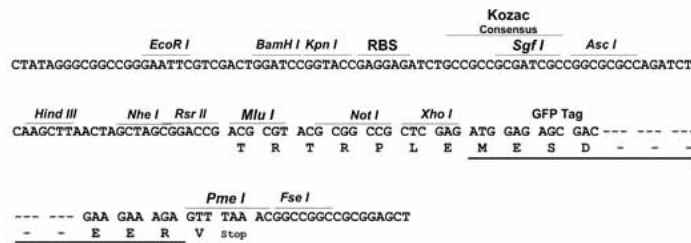
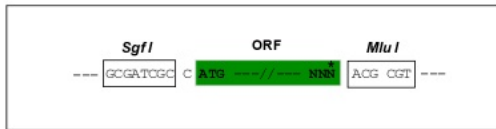
MPPPRSSRRLRAGTLEALVRHLLDTRTSGTDVFSFMSAFLATHRAFTSTPALLGLMADRLEALESHTDEL  
 ERTTEVAISVLSTWLASHPEDFGSEAKGQLDRLESFLLQTGYAAGKGVGGGSADLIRNLSRVDPQAPDL  
 PKPLALPGDPPADPTDVLVFLADHLAEQLTLLDAELFLNLIPSQCLGGLWHRDRPGHSHLCPVSRATVQ  
 QFNKVAGAVVSSVLGATSTGEGPGEVTRPLRPPQRRARLLEKWIRVAEECRLLRNFSVYAVVSALQSSP  
 IHRLRAAWGEATRDSLRFVSSLQIFSEEDNYSQSRELLVQEVKLQSPLEPHSKKAPRSGSRGGGVVPLY  
 GTFLKDLVMLDAASKDELENGYINFDKRRKEFAVLSELRRQLQNECRGYNLQPDHDIQRWLQGLRPLTEAQ  
 SHRVSCEVEPPGSSDPPAPRVLRPRTLVISQWTEVLGSVGVPTPLVSCDRPSTGGDEAPTPAPLLTRLAQ  
 HMKWPSVSSLDSALESSPSLHSPADPSHLSPASSPRPSRGHRRSASCGSPLSGGAEASGGTGYGGEGS  
 GPGASDCRIIRVQMELGEDGSVYKILVTSQDKAPSVISRVLKKNRDSAVASEVELVQLLPERELTIP  
 ASANVFYAMDGASHDFLLRQRRRSTATPGVTSGPSASGTPPSEGGGGSFPRIKATGRKARALF

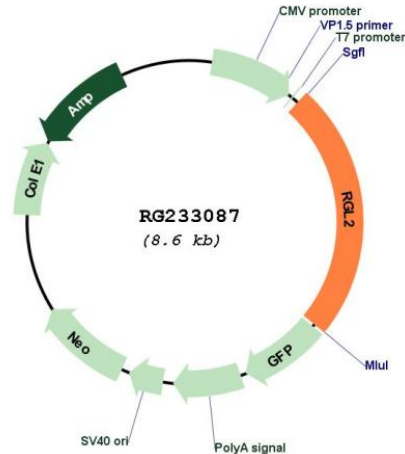
TRTRPLE - GFP Tag - V

Restriction Sites: SgfI-MluI

Cloning Scheme:

Cloning sites used for ORF Shuttling:



**Plasmid Map:**


**ACCN:** NM\_001243738

**ORF Size:** 2085 bp

**OTI Disclaimer:** The molecular sequence of this clone aligns with the gene accession number as a point of reference only. However, individual transcript sequences of the same gene can differ through naturally occurring variations (e.g. polymorphisms), each with its own valid existence. This clone is substantially in agreement with the reference, but a complete review of all prevailing variants is recommended prior to use. [More info](#)

**OTI Annotation:** This clone was engineered to express the complete ORF with an expression tag. Expression varies depending on the nature of the gene.

**Components:** The ORF clone is ion-exchange column purified and shipped in a 2D barcoded Matrix tube containing 10ug of transfection-ready, dried plasmid DNA (reconstitute with 100 ul of water).

**Reconstitution Method:**

1. Centrifuge at 5,000xg for 5min.
2. Carefully open the tube and add 100ul of sterile water to dissolve the DNA.
3. Close the tube and incubate for 10 minutes at room temperature.
4. Briefly vortex the tube and then do a quick spin (less than 5000xg) to concentrate the liquid at the bottom.
5. Store the suspended plasmid at -20°C. The DNA is stable for at least one year from date of shipping when stored at -20°C.

**RefSeq:** [NM\\_001243738.1](#), [NP\\_001230667.1](#)

**RefSeq Size:** 3165 bp

RefSeq ORF:	2088 bp
Locus ID:	5863
UniProt ID:	<u><a href="#">O15211</a></u>
Cytogenetics:	6p21.32
Protein Families:	Druggable Genome
Gene Summary:	Probable guanine nucleotide exchange factor. Putative effector of Ras and/or Rap. Associates with the GTP-bound form of Rap 1A and H-Ras in vitro (By similarity).[UniProtKB/Swiss-Prot Function]