

Product datasheet for **RG233085**

NDUFS1 (NM_001199981) Human Tagged ORF Clone

Product data:

Product Type:	Expression Plasmids
Product Name:	NDUFS1 (NM_001199981) Human Tagged ORF Clone
Tag:	TurboGFP
Symbol:	NDUFS1
Synonyms:	CI-75k; CI-75Kd; MC1DN5; PRO1304
Mammalian Cell Selection:	Neomycin
Vector:	pCMV6-AC-GFP (PS100010)
E. coli Selection:	Ampicillin (100 ug/mL)



[View online »](#)

ORF Nucleotide Sequence:

>RG233085 representing NM_001199981
 Red=Cloning site Blue=ORF Green=Tags(s)

TTTTGTAATACGACTCACTATAGGGCGGCCGGAATTCGTCGACTGGATCCGGTACCGAGGAGATCTGCC
 GCC**CGGATCGCC**

ATGTTAAGGATACCTGTAAGAAAGCCTTAGTAGGCCTTCTAAGTCTCCTAAAGGATGTGTTTCAACAA
 CTGCCACAGCAGCAAGCAACTTGATTGAAGTATTTGTTGATGGTCAGTCTGTCATGGTGGAAACCGGGAAC
 GACCGTCTCCAAGTTGTAGCTGTTGTGCCATGCCAGTAATGAAGGGTTGGAATATCCTAACAACTCA
 GAAAAATCCAAAAAGCCAGGGAAGGTGTGATGGAGTTCTTATTAGCAAATCACCCATTGGACTGTCCTA
 TTTGTGACCAGGGAGGTGAATGTGATCTGCAGGACCAGTCCATGATGTTTGGAAATGATAGGAGCCGATT
 TTTAGAGGGGAAGCGTGTGTGGAAGACAAGAACATTGGGCCATTGGTAAAGACCATCATGACAAGATGT
 ATACAGTGTACTCGTCATCAGTTTGAAGTGAAGTGCAGGAGTAGATGATTTGGGAACAACAGGCA
 GAGGAAATGATATGCAAGTTGGCACATACATTGAAAAGATGTTTCATGTCTGAACTGTCTGGGAATATCAT
 TGATATCTGCCCTGTAGGTGCCCTAACCTAAGCCCTATGCCTTACTGCCCGCCTTGGGAAACAAGA
 AAGACAGAATCCATTGATGTAATGGATGCGGTTGGAAGTAATATTGTGGTTAGCACAAAGAACTGGAGAAG
 TGATGAGGATTTTGCACGTATGCATGAGGACATCAATGAAGAGTGGATCTCTGATAAAAACCAGATTTGC
 CTATGATGGGCTAAAACGTCAAAGACTTACCGAGCCAATGGTCAGAAATGAAAAAGGGCTTTTAACTAT
 ACTTCTTGGGAGGATGCGCTCTCTCGCGTAGCTGGAATGTTGCAGAGTTTCAAGGCAAAGATGTGGCAG
 CAATTGCAGGTGGCTTGGTGGATGCTGAAGCCCTGGTAGCTCTCAAAGATTTGCTTAATAGAGTGGACTC
 TGACACCTTATGCACTGAAGAGGTCTTCCCCTGCAGGAGCTGGCACAGATTTGCGTCCAATTTATCTT
 CTTAATACTACAATTGCTGGTGTGGAAGAGGCAGATGTTGTTCTCTGGTTGGTACAAACCCACGTTTTG
 AGGCACCACTGTTAATGCTAGAATTCGAAAGAGCTGGCTGCATAATGACTTAAAAGTGGCCCTTATAGG
 CAGTCCAGTGGACCTCACTTACACATATGACCACCTGGGAGACTCCCCAAAATTTCAAGACATTGCT
 TCGGGAAGCCATCCATTTAGCCAGTCTTAAAGGAAGCTAAAAACCAATGGTGGTTTTAGGCAGTCTG
 CACTCCAAAGAAATGATGGAGCAGCAATCTTGCAGCTGTTTCTAGCATTGCACAAAAGATTCGGATGAC
 TAGTGGTGTACTGGTATTGGAAGTTATGAATATCCTTCATAGGATTGCAAGTCAAGTAGCTGCTTTG
 GACCTTGGCTATAAGCCTGGGGTGAAGCAATTCGGAAGAACCCTCCAAGGTGCTGTTTCTCTGGGAG
 CAGATGGAGGTTGTATCACACGACAGGATTTGCCAAAGGATTGTTTCATTATTTATCAAGGACATCATGG
 TGATGTTGGGGCTCCCATAGCTGATGTTATTCTCCAGGAGCTGCTTACACAGAGAAGTCTGCTACATAT
 GTCAACTGAGGGTAGAGCTCAGCAGACTAAGGTAGCAGTGACACCTCCTGGCTTGGCAAGAGAAGACT
 GAAAAATTATAAGAGCACTCTCTGAGATTGCTGGAATGACTCTTCCATATGATACTCTGGATCAAGTAAG
 GAACAGATTGGAAGAAGTCTCTCCTAATCTTGTTGATATGATGATATTGAAGGGGCTAATTACTCCAG
 CAAGCAAATGAGCTCTCAAAGCTAGTGAACCAGCAGCTTCTTGCTGACCCACTTGTTCACCTCAGCTAA
 CTATAAAAGACTTCTACATGACAGATTCATTAGCAGAGCCTCACAGACAATGGCCAAATGTGTCAAAGC
 TGTCACAGAGGGTGCCAGGCAGTAGAGGAACCATCCATATGC

ACGCGTACGCGGCCGCTCGAG - GFP Tag - GTTTAA

Protein Sequence: >RG233085 representing NM_001199981
 Red=Cloning site Green=Tags(s)

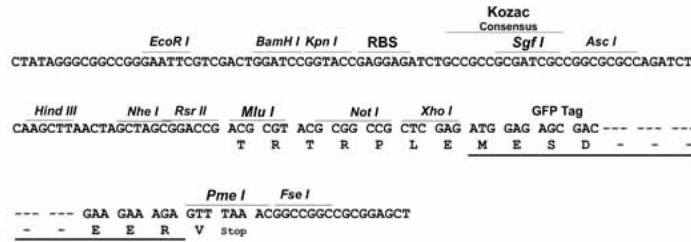
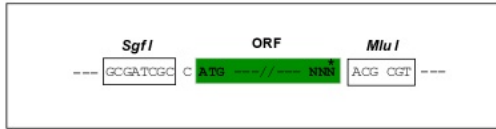
MLRIPVRKALVGLSKSPKGCVRRTATAASNLIIEVFVDGQSVMEVPGTTVLQVVAACAMPVMKGWNILTNS
 EKSKKAREGVMEFLLANHPLDCPICDQGGEDLDQSQSMMFGNDRSRFLEGKRAVEDKNIGPLVKTIMTRC
 IQCTRCIRFASEIAGVDDL GTTGRGNDMQVGTYIEKMFMSSELSGNIIDICPVGALTSKPYAFTARPWETR
 KTESIDVMDAVGSNIIVVSTRTGEVMRILPRMHEDINEEWISDKTRFAYDGLKRQRLTEPMVRNEKGLLTY
 TSWEDALSRVAGMLQSFQGKDVAAIAGGLVDAEALVALKDLLNRVDSDTLCTEEVFPTAGAGTDLRSNYL
 LNNTTIAGVEEADVLLVGTNPRFEAPL FNARIRKSWLHNDLKVALIGSPVDLTYTYDHLGDSPKILQDIA
 SCSHPFSQVLKEAKKPMVVLGSSALQRNDGAAIILAAVSSIAQKIRMTSGVTGDWKMVNIHRIASQVAAL
 DLGYKPGVEAIRKNPPKVL FLLGADGGCITRQDLPKDCF I IYQGHHDVGAPIADVILPGAAYTEKSATY
 VNTEGRAQQTKVAVTPPLAREDWKIIRALSEIAGMTLPYDTLDQVRNRLEEVSPLVRYDDIEGANYFQ
 QANELSKLVNQLLADPLVPPQLTIKDFYMTDSISRASQTMKCVKAVTEGAQAVEEPSIC

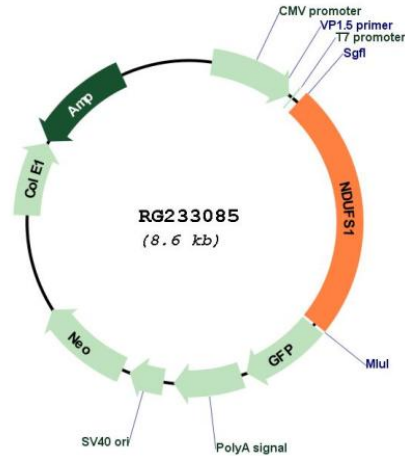
TRTRPLE - GFP Tag - V

Restriction Sites: SgfI-MluI

Cloning Scheme:

Cloning sites used for ORF Shuttling:



Plasmid Map:


ACCN: NM_001199981

ORF Size: 2073 bp

OTI Disclaimer: The molecular sequence of this clone aligns with the gene accession number as a point of reference only. However, individual transcript sequences of the same gene can differ through naturally occurring variations (e.g. polymorphisms), each with its own valid existence. This clone is substantially in agreement with the reference, but a complete review of all prevailing variants is recommended prior to use. [More info](#)

OTI Annotation: This clone was engineered to express the complete ORF with an expression tag. Expression varies depending on the nature of the gene.

Components: The ORF clone is ion-exchange column purified and shipped in a 2D barcoded Matrix tube containing 10ug of transfection-ready, dried plasmid DNA (reconstitute with 100 ul of water).

Reconstitution Method:

1. Centrifuge at 5,000xg for 5min.
2. Carefully open the tube and add 100ul of sterile water to dissolve the DNA.
3. Close the tube and incubate for 10 minutes at room temperature.
4. Briefly vortex the tube and then do a quick spin (less than 5000xg) to concentrate the liquid at the bottom.
5. Store the suspended plasmid at -20°C. The DNA is stable for at least one year from date of shipping when stored at -20°C.

RefSeq: [NM_001199981.2](#)

RefSeq Size: 3365 bp

RefSeq ORF: 2076 bp

Locus ID: 4719

UniProt ID: [P28331](#)

Cytogenetics: 2q33.3

Protein Pathways: Alzheimer's disease, Huntington's disease, Metabolic pathways, Oxidative phosphorylation, Parkinson's disease

Gene Summary: The protein encoded by this gene belongs to the complex I 75 kDa subunit family. Mammalian complex I is composed of 45 different subunits. It locates at the mitochondrial inner membrane. This protein has NADH dehydrogenase activity and oxidoreductase activity. It transfers electrons from NADH to the respiratory chain. The immediate electron acceptor for the enzyme is believed to be ubiquinone. This protein is the largest subunit of complex I and it is a component of the iron-sulfur (IP) fragment of the enzyme. It may form part of the active site crevice where NADH is oxidized. Mutations in this gene are associated with complex I deficiency. Several transcript variants encoding different isoforms have been found for this gene. [provided by RefSeq, Jan 2011]