

Product datasheet for **RG233082**

IL17RC (NM_001203265) Human Tagged ORF Clone

Product data:

Product Type:	Expression Plasmids
Product Name:	IL17RC (NM_001203265) Human Tagged ORF Clone
Tag:	TurboGFP
Symbol:	IL17RC
Synonyms:	CANDF9; IL17-RL; IL17RL
Mammalian Cell Selection:	Neomycin
Vector:	pCMV6-AC-GFP (PS100010)
E. coli Selection:	Ampicillin (100 ug/mL)



[View online »](#)

**ORF Nucleotide
Sequence:**

>RG233082 representing NM_001203265
 Red=Cloning site Blue=ORF Green=Tags(s)

TTTTGTAATACGACTCACTATAGGGCGGCCGGAATTCGTCGACTGGATCCGGTACCGAGGAGATCTGCC
 GCC**GCGATCGCC**

ATGCCTGTGCCCTGGTTCTTGTGTCTTGGCACTGGGCCGAAGCCAGTGGTCCTTTCTCTGGAGAGGC
 TTGTGGGGCCTCAGGACGCTACCCACTGCTCTCCGGGCCTCTCCTGCCGCCTCTGGGACAGTGACATACT
 CTGCCTGCCTGGGGACATCGTGCCTGCTCCGGGCCCGTCTGGCGCCTACGCACCTGCAGACAGAGCTG
 GTGCTGAGGTGCCAGAAGGAGACCGACTGTGACCTCTGTCTGCGTGTGGCTGTCCACTTGGCCGTGCATG
 GGCCTGGGAAGAGCCTGAAGATGAGGAAAAGTTGGAGGAGCAGCTGACTCAGGGGTGGAGGAGCCTAG
 GAATGCCTCTCTCAGGCCAAGTCGTGCTCTCCTTCCAGGCCTACCCTACTGCCCGCTGCGCTCTGCTG
 GAGGTGCAAGTGCCTGCTGCCCTTGTGCAGTTTGGTCAGTCTGTGGGCTCTGTGGTATATGACTGCTTCG
 AGGCTGCCCTAGGAGTGAGGTACGAATCTGGTCTATACTCAGCCAGGTACGAGAAGGAACTCAACCA
 CACACAGCAGCTGCCTGCCCTGCCCTGGCTCAACGTGTCAGCAGATGGTGACAACGTGCATCTGGTTCTG
 AATGTCTCTGAGGAGCAGCACTTCGGCCTCTCCCTGTACTGGAATCAGGTCCAGGGCCCCCAAAACCCC
 GGTGGCACAAAACCTGACTGGACCGCAGATCATTACCTTGAACACACAGACCTGGTTCCTGCCTCTG
 TATTACAGGTGTGGCCTCTGGAACCTGACTCCGTTAGGACGAACATCTGCCCTTCAGGGAGGACCCCGC
 GCACACAGAACCTCTGGCAAGCCGCCGACTGCGACTGCTGACCTGCAGAGCTGGCTGCTGGACGCAC
 CGTGCTCGCTGCCCGCAGAAGCGGCACTGTGCTGGCGGCTCCGGGTGGGACCCCTGCCAGCCACTGGT
 CCCACCGCTTTCCTGGGAGAACGTCACCTGTGGAGTGAACAGCTCGGAGAAGCTGCAGCTGCAGGAGTGC
 TTGTGGCTGACTCCCTGGGCCTCTCAAAGACGATGTGCTACTGTTGGAGACAGAGGCCCCCAAGGACA
 ACAGATCCCTCTGTGCCCTTGAACCCAGTGGCTGTACTTCACTACCCAGCAAAGCCTCCAGAGGGCAGC
 TCGCCTTGGAGAGTACTTACTACAAGACCTGCAGTCAGGCCAGTGTCTGCAGCTATGGGACGATGACTTG
 GGAGCGCTATGGCCTGCCCATGGACAAATACATCCACAAGCGCTGGGCCCTCGTGTGGCTGGCCTGCC
 TACTCTTTGCCGCTGCGCTTTCCTCATCTCCTTCTCAAAAAGGATCACGCGAAAGGGTGGCTGAGGCT
 CTTGAAACAGGACGTCGCTCGGGGGCGGCCAGGGGCGCGCGGCTCTGCTCCTTACTCAGCCGAT
 GACTCGGGTTTCGAGCGCCTGGTGGGCGCCTGGCGTCCGCCCTGTGCCAGCTGCCGCTGCGCGTGGCCG
 TAGACCTGTGGAGCCGTCGTGAACCTGAGCGCGCAGGGGCCGTTGGTTTACGCGCAGCGGCCCA
 GACCCTGCAGGAGGGCGCGTGGTGTCTTCTCTCCCGTGCAGTGGCGCTGTGCAGCGAGTGG
 CTACAGGATGGGGTGTCCGGGCCGGGGCGCACGCCCCGACGACGCCTTCCGCGCTCGCTCAGCTGCG
 TGCTGCCCGACTTCTTGCAGGGCCGGGCCCGGCGAGTACGTGGGGGCTGCTTCGACAGGCTGCTCCA
 CCCGGACGCCGTACCCGCCCTTTCCGACCGTGCCTGCTTACACTGCCCTCCCAACTGCCAGACTTC
 CTGGGGGCCCTGCAGCAGCCTCGCGCCCGGCTTCCGGGCGGCTCCAAGAGAGAGCGGAGCAAGTGTCC
 GGGCCCTTACCCAGCCCTGGATAGTACTTCCATCCCCGGGGACTCCCGCGCCGGGACGCGGGTGGG
 ACCAGGCGCGGGACCTGGGGCGGGGACGGGACT

ACGCGTACGCGGCCGCTCGAG - GFP Tag - GTTTAA

Protein Sequence: >RG233082 representing NM_001203265
 Red=Cloning site Green=Tags(s)

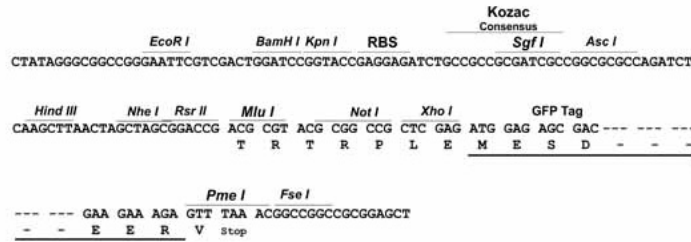
MPVPWFLLSLALGRSPVVL SLERLVGPQDATHCSPGL SCRLWSDILCLPGDIVPAGPVLAPTHLQTEL
 VLRCQKETDCDLCLRVAVHLAVHGHWEPEDEEKFGGAADSGVEEPRNASLQAQVLSFQAYPTARCVLL
 EVQVPAALVQFGQSVGSVYDCEAALGSEVRIWSYTPRYEKELNHTQQLPALPWLNVSADGDNVHLVL
 NVSEEQHFGLSL YWNQVQGGPPKPRWHKNTLGPQIITLNHTDLVPCLCIQVWPLEPDSVRTNICPFREDPR
 AHQNLWQAARLRLLTLQSWLLDAPCSLPAEAALCWRAPGGDPCQPLVPPLSWENVTVDVNSSEKLLQEC
 LWADSLGPLKDDVLLLETRGPQDNRSLEPSGCTSLPSKASTRAARLGEYLLQDLQSGQCLQLWDDDL
 GALWACPMDKYIHKRWALVWLACLLFAAALSLILLKKDHAKGWLRLKQDVRSGAAARGRAALLLYSAD
 DSGFERLVGALASALCQLPLRVAVDLWSRRELSAQGPVAVFHAQRRTLQEGGVVLLFSPGAVALCSEW
 LQDGVSGPGAHPHDAFRASLSCVLPDFLQGRAPGSYVGACFDRLLHPDAVPALFRTVPVFTLPSQLPDF
 LGALQQPRAPRSRGLQERAEQVSRALQPALDSYFHPGTPAPGRGVGPGAGPGAGDGT

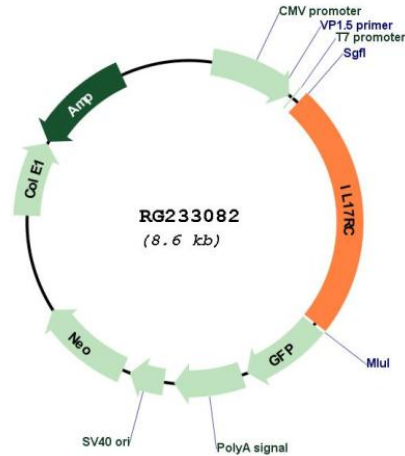
TRTRPLE - GFP Tag - V

Restriction Sites: SgfI-MluI

Cloning Scheme:

Cloning sites used for ORF Shuttling:



Plasmid Map:


ACCN: NM_001203265

ORF Size: 2064 bp

OTI Disclaimer: The molecular sequence of this clone aligns with the gene accession number as a point of reference only. However, individual transcript sequences of the same gene can differ through naturally occurring variations (e.g. polymorphisms), each with its own valid existence. This clone is substantially in agreement with the reference, but a complete review of all prevailing variants is recommended prior to use. [More info](#)

OTI Annotation: This clone was engineered to express the complete ORF with an expression tag. Expression varies depending on the nature of the gene.

Components: The ORF clone is ion-exchange column purified and shipped in a 2D barcoded Matrix tube containing 10ug of transfection-ready, dried plasmid DNA (reconstitute with 100 ul of water).

Reconstitution Method:

1. Centrifuge at 5,000xg for 5min.
2. Carefully open the tube and add 100ul of sterile water to dissolve the DNA.
3. Close the tube and incubate for 10 minutes at room temperature.
4. Briefly vortex the tube and then do a quick spin (less than 5000xg) to concentrate the liquid at the bottom.
5. Store the suspended plasmid at -20°C. The DNA is stable for at least one year from date of shipping when stored at -20°C.

RefSeq: [NM_001203265.1](#), [NP_001190194.1](#)

RefSeq Size: 2356 bp

RefSeq ORF: 2067 bp

Locus ID: 84818

UniProt ID: [Q8NAC3](#)

Cytogenetics: 3p25.3-p24.1

Protein Families: Druggable Genome, Transmembrane

Gene Summary: This gene encodes a single-pass type I membrane protein that shares similarity with the interleukin-17 receptor (IL-17RA). Unlike IL-17RA, which is predominantly expressed in hemopoietic cells, and binds with high affinity to only IL-17A, this protein is expressed in nonhemopoietic tissues, and binds both IL-17A and IL-17F with similar affinities. The proinflammatory cytokines, IL-17A and IL-17F, have been implicated in the progression of inflammatory and autoimmune diseases. Multiple alternatively spliced transcript variants encoding different isoforms have been detected for this gene, and it has been proposed that soluble, secreted proteins lacking transmembrane and intracellular domains may function as extracellular antagonists to cytokine signaling. [provided by RefSeq, Feb 2011]