

Product datasheet for **RG233071**

CFAP94 (NM_001204102) Human Tagged ORF Clone

Product data:

Product Type:	Expression Plasmids
Product Name:	CFAP94 (NM_001204102) Human Tagged ORF Clone
Tag:	TurboGFP
Symbol:	CFAP94
Synonyms:	CASC1; LAS1; PPP1R54
Mammalian Cell Selection:	Neomycin
Vector:	pCMV6-AC-GFP (PS100010)
E. coli Selection:	Ampicillin (100 ug/mL)



[View online »](#)

ORF Nucleotide
Sequence:

>RG233071 representing NM_001204102
Red=Cloning site Blue=ORF Green=Tags(s)

TTTTGTAATACGACTCACTATAGGGCGGCCGGAATTCGTCGACTGGATCCGGTACCGAGGAGATCTGCC
GCCGCGATCGCC

ATGAAAGGCTTGAAATACAGCGAATTGAGAAAGAAAAATGGCATCGACTTGAAGCAAAGATCTAGAAA
GGAGAAATGAAGAACTTGAAGAATTTATTTATTAGAGAGGTGTTTTCTGAAGCAGAGAAATTGAAACA
GGAAACTAAATTGCTTTCTCAGTGAAGCACTACATTCAATGTGATGGGAGTCCCTGATCCTTCAGTAGCC
CAAGAAATGAACACGTTTATTAGTTTGTGGAAAGAGAAAACAAATGAGACTTTTGAGGAAGTGATTGAGA
AGAGTAAAGTAGTGCTAAATTTAATTGAGAAATGAAATTTATTTACTGGAACTCCACCATGTGATTT
GCAAGATAAAAAATAATACAGTACCAAGAATCAATACTACAACGCAGGAGCTCCTTCATCTTAAATTC
GGTGTAGCCACAGAAATACTTCTCAAACAAGCTAGTACTTTGGCAGATCTGGACAGTGGAATATGGAAA
AAGTCATTAAGATGAAAATGTTACTCTGTATGTGTGGGCAAACCTCAAGAAGAATCCAAGGCACAGAAG
TGTTAGATTCTCTGAAACACAAATTGGATTTGAGATTCCAAGGATATTAGCAACAAGTGACATTGCTGTA
CGACTCCTGCATACCCACTATGATCATGTTTCTGCACTGCACCCTGTTTCAACACCATCAAAAGAATACA
CTTCTGCAGTAACTGAGCTTGTCAAAGATGATGTTAAGAATGTAGAAAAAGCAATCAGCAAGGAGGTCTGA
AGAAGAGTCCAAACAACAAGAAAGAGGGTCTCACTTAATTCAGGAGGAAGAAATAAAAGTTGAGGAGGAA
CAAGGTGATATTGAAGTGAAGTGAAGTCTGCTGAGGAAGAATCTGAAGCCATAAAATGTGAACGAGAGA
TGAAAGTATTAAGTGAAGTGTTCAGCAGCACAGTGTGTGCTGGTAGAGAATCTTCTGAAAAGCCAGA
TTTCTTTGAAGACAATGTGGTGGATTTATGCCAGTTCACAACCTCTGGGTGGAGTATACCATTGGATATT
TTGGAGCTTCTCCACAGTGTAAACCAGTGAAGGGATGGATGATTGTGGAATACTCAAAGAAGGATTAC
AGAAATACACATATCCTCCGAAACTACAGAAGGTTTGAGACAGAAAAATGCTTTCCACCTATAGAGGT
CACACTTGAGGTTTCATGAGAATGTAATCTTTTTTGAGGATCCTGTGGTTGTAAGGTGGGATGCTGAAGGT
AAACATTGGAGAAGTGTGGCATCAGCAATGTATCCTACAACCAAAAAGAAAGACTTGTAACATTAGCC
TGGACACCTTTGGCCCTGTACCTTGATTCAAGATGCTCATATTAACATGCCGTACCAGTCATGGGAACT
AAGACCACTTGATGTAATAAAGTACTTTAACTGTGACTACAGTATTTACTGAGATTCAAATACAAATT
AAGGAAAACCTCTGCATGTTATCTTCAATCAAACAAAAGACAAGAAACACATCTCTATTTTGAAGGAA
CCTGGATGACTCCTATTCCTTTTATTGCTTTGAAAGAAGCTGGACTGAATATCTTTCCTACTAGACA
CTCTCATTTTTATGTTATTATAAACAATAAGGTTCTTTGGTAGAAGTGAAGCTTATCGACAGATGGCC
CTACTAAGTTCTGCTTTTGCATTTGGTTGGAGCAAGTGGAACTACTATGTAATTCTACAAAAGTCGTAT
TTAAGGTGAGGGAACACCTTACTGAAGAATGACTGAGAATCCTAATTGGGCCCTTTAATGTTTAGTGG
TGACAGAGCACAAGACTGAAGATCAAGGAAGAGAGTGAGGCATTTTCTGAAGCACTTAAAGAAGAACT
GAGTTTCACTTCTACTTTATATCATATGGTGAAGGATTTTCTTCTGAGGAAGCAATGGAGAAAGTCAGGA
GTTCCAACGTGAGTTTGTCAACTCTGTGTGCCACATGCTGCTCTACCAGATTGCTCAGCTACTCC

ACGCGTACGCGGCCGCTCGAG - GFP Tag - GTTTAA

Protein Sequence: >RG233071 representing NM_001204102
 Red=Cloning site Green=Tags(s)

```

MERLEIQRIEKEKWHRLEAKDLERRNEELEELYLLERCFPPEAKLKQETKLLSQWKHYIQCDGSPDPSVA
QEMNTFISLWKEKTNETFEEVIEKSKVVLNLEIKLFILLETPPCDLQDKNIIQYQESILQLQELLHLKF
GVATEILLKQASTLADLDSGNMEKVIKDENVTLVYWANLKKNPRHRSVRFSETQIGFEIPRILATSDIAV
RLLHHTYDHSVLSALHPVSTPSKEYTSVAVTELVKDDVKNVEKAISKEVEEESKQQERGSHLIQEEEEIKVEE
QGDIEVKMSSAESEEAIKCEREMKVLSETVSAQQLLVENSSEKPDFFDNVVDLCQFTTLGGVYHLDI
LELPPQCKPVKGMIVELKKEGLQKTYTPPETTEEFETENAFPIEVTLEVHENVIFFEDPVVVRWDAEG
KHWRDGLISNVSYPKERLVTFLDFTGFPVTLIQDAHINMPYQSWELRPLDVNKVLLTVTTVFTEIQIQI
KENLCLMSSIKLKDKKHISILEGTWMTPIPFIIALKEAGLNIFPTRSHFYVIINNKPVLVEVKAYRQMA
LLSSAFAGWSKWNLLCNSTKVVFKVREHLTEECTENPNWALLMFGDRAQRLKIKEESEAFSEALKEET
EFHSTLYHMKDFASEEAMEKVRSSNCQFVNSVCHMLLSTRLLSYS
  
```

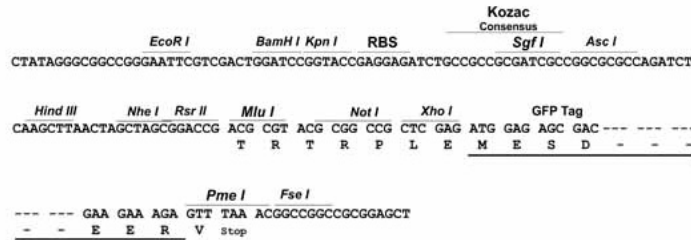
TRTRPLE - GFP Tag - V

Restriction Sites:

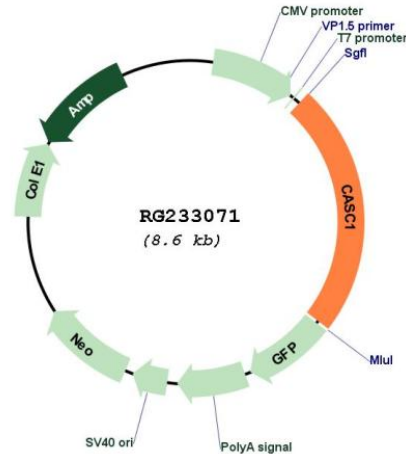
Sgfl-MluI

Cloning Scheme:

Cloning sites used for ORF Shuttling:



Plasmid Map:



ACCN: NM_001204102

ORF Size: 2028 bp

OTI Disclaimer: The molecular sequence of this clone aligns with the gene accession number as a point of reference only. However, individual transcript sequences of the same gene can differ through naturally occurring variations (e.g. polymorphisms), each with its own valid existence. This clone is substantially in agreement with the reference, but a complete review of all prevailing variants is recommended prior to use. [More info](#)

OTI Annotation: This clone was engineered to express the complete ORF with an expression tag. Expression varies depending on the nature of the gene.

Components: The ORF clone is ion-exchange column purified and shipped in a 2D barcoded Matrix tube containing 10ug of transfection-ready, dried plasmid DNA (reconstitute with 100 ul of water).

Reconstitution Method:

1. Centrifuge at 5,000xg for 5min.
2. Carefully open the tube and add 100ul of sterile water to dissolve the DNA.
3. Close the tube and incubate for 10 minutes at room temperature.
4. Briefly vortex the tube and then do a quick spin (less than 5000xg) to concentrate the liquid at the bottom.
5. Store the suspended plasmid at -20°C. The DNA is stable for at least one year from date of shipping when stored at -20°C.

RefSeq: [NM_001204102.2](#)

RefSeq Size: 2550 bp

RefSeq ORF: 2031 bp

Locus ID: 55259

UniProt ID: [Q6TDU7](#)

Cytogenetics: 12p12.1

Gene Summary: Via its association with the multisubunit axonemal dynein complex, is potentially involved in the regulation of cilia function. May also act as a cell cycle regulator.[UniProtKB/Swiss-Prot Function]