

Product datasheet for **RG233065**

ATRIP (NM_001271022) Human Tagged ORF Clone

Product data:

Product Type:	Expression Plasmids
Product Name:	ATRIP (NM_001271022) Human Tagged ORF Clone
Tag:	TurboGFP
Symbol:	ATRIP
Mammalian Cell Selection:	Neomycin
Vector:	pCMV6-AC-GFP (PS100010)
E. coli Selection:	Ampicillin (100 ug/mL)



[View online »](#)

ORF Nucleotide
Sequence:

>RG233065 representing NM_001271022
Red=Cloning site Blue=ORF Green=Tags(s)

TTTTGTAATACGACTCACTATAGGGCGGCCGGGAATTCGTCGACTGGATCCGGTACCGAGGAGATCTGCC
GCCGCGATCGCC

ATGAAAGTAAATGGAAGAAGAAGTTCTCATTAAAGATGGAGAAATTTAAATTTTTCGAGACTCACTACATC
AGACGGAATCCGTTCTAGAGGAACAGAGAAGATCACATTTTCTTCTTGAGCAAGAGAAAACCAAGCACT
CAGTGACAAGGAAAAGGAATTCTCCAAAAAGCTCCAATCATTGCAGTCTGAACTCCAGTTTAAAGATGCA
GAGATGAATGAATTAAGGACAAAGCTCCAGACCAGTGAACGAGCAATAAACTGGCTGCTCCCTCTGTTT
CCCATGTCAGTCTTAGGAAAAACCTTCTGTGGTTATAAAGCCAGAAGCATGTTCTCCACAATTTGGAAA
AACATCTTTTCTACAAAGGAGTCTTTTAGTGCTAACATGTCCCTTCCCCACCCCTGCCAGACGGAGTCA
GGATAAAGCCTCTGGTGGGCAGAGAGGATAGTAAGCCCCACAGTCTGAGAGGTGACTCCATAAAACAAG
AAGAGGCCAGAAAAGCTTTGTTGACAGCTGGAGACAGAGATCAAACACTCAAGGTTCCATTTTGATAAA
CCTGCTCTGAAGCAGCCTTTGATCCCAGGGTCATCCCTAAGCCTTGGCCACCTCCTGAGTAGTAGTTCT
GAGTCTCCTGCTGGCACCCTTGCAGCCACCAGGGTTTGGCAGTACCTTGGCTGGAATGTCAGGCCTCA
GGACCACAGGTTCTTATGATGGGTCATTTCCCTCTCAGCCCTGAGAGAAGCACAGAACCTGGCATTACAC
TGGACTGAATCTGGTTGCCCGGAATGAGTGCTCACGTGATGGAGACCCAGCAGAGGGAGGCAGAAGGGCC
TTCCCACTCTGCCAGTCTCCTGGAGCCGTGCATTTCTCCCTTGTACAGTTCTTTCATCGGCTTACACT
GCCAGGCCTGACAGACTTGGCAGCTGCTAAGAGAAGCGGAGCACCTGGGACTCACCGACACATTCCTC
CTGCGTGAGCTCTGGGGTAGAGACCAACCTGAGGACTCAGTGTGCATCCTGGAAGGCTTCTCTGTGACT
GCACTTAGCATTCTCAGCACCTGGTGTCCACAGCGGAGCAGTCGTCTCCCTATTACTGTCAGGAGTGG
GGCAGATTCTGCTGCTGGGAAGGAAACAGGAGCCTGGTTCACAGGCTTAGTGATGGAGATATGACCTC
AGCCCTAAGGGGGTTGCTGATGACCAAGGACAGCACCCACTGTTGAAGATGCTTCTTACCTGTTGGCT
TTCTTCTGTCAGCAACAGGTCACCTTCAAGCCAGTGTCTGACCCAGTGCCTAAGGTTTTGGTAAAT
TAGCCGAAAACACTTCTGTGATTTCTTGCCAGGTTCCAGTGTGTGTTCCAAGTCTGCCAAAGTGCCT
CAGCCCAGAGACACCCCTGCCTAGCGTGTCTGGCTGTTGAGCTCCTCTCCCTGCTGGCGGACCACGAC
CAGCTGGCACCTCAGCTCTGTTCCCACTCAGAAGGCTGCCTCCTGCTGCTGTACATGTACATCACAT
CACGGCCTGACAGAGTGGCCTTGGAGACACAATGGCTCCAGCTGGAACAAGAGGTGGTGTGGCTCCTGGC
TAAGCTTGGTGTGCAGAGCCCTTGCCCCAGTCACTGGCTCCAAGTCCAGTGTAAATGTGGAGGTGGTC
AGAGCGCTCACGGTGATGTTGCACAGACAGTGGCTGACAGTGGGAGGGCAGGGGACCCCAAGGACCG
ACCAGCAGAGGGCGACAGTGCCTGTCTGCGGGACACGGTGTCTGCTGCTGCACGGCTATCGCAGAAGGA
CAAGCTTTCATGATGCACTGCCTGGAGGTCTGCATCAGTTTGACCAGGTGATGCCGGGGTGCAGCATG
CTCATCCGAGGGCTTCTGATGTGACGGACTGTGAAGAGGCAGCCCTGGATGACCTCTGTGCCGGGAAA
CCGATGTGAAGACCCCGAGGTGGAGTGTGGC

ACGCGTACGCGGCCGCTCGAG – GFP Tag – GTTTAA

Protein Sequence: >RG233065 representing NM_001271022
 Red=Cloning site Green=Tags(s)

MKVMEEEVLKNGEIKILRDSLHQTESVLEEQRSHFLLEQEKQALSDKEKEFSKKLQSLQSELFQKDA
 EMNELRTKLQTSERANKLAAPSVSHVSPRKNPSVVIKPEACSPQFGKTSFPTKESFSANMSLPHPCQTES
 GYKPLVGREDSKPHSLRGDSIKQEAAQKSFVDSWRQSRNTQGSILINLLKQPLIPGSSLSLCHLLSSSS
 ESPAGTLPQPFGSTLAGMSGLRTTGSYDGSFSLSALREAQNLAFTGLNLVARNECSRDPDPAEGGRRRA
 FPLCQLPGAVHFLPLVQFFIGLHCQALQDLAAAKRSGAPGDSPTHSSCVSSGVETNPEDSVCILEGFSVT
 ALSILQHLVCHSGAVVSLLLSGVGADSAAGEGNRSLVHRLSDGDMTSALRGVADDQGHPLLKMLLHLLA
 FSSAATGHLQASVLTQCLKVLVLAENTSCDFLPRFQCVFQVLPKCLSPETPLPSVLLAVELLSSLADHD
 QLAPQLCSHSEGCLLLLLYMYITSRPDRVALETQWLQLEQEVVWLLAKLGVQSPLPPVTGSNCQCNEVV
 RALTVMLHRQWLTVRRAGPPRTDQQRRTVRCLRDTVLLLHGLSQKDKLFMMHCVEVLHQFDQVMPGVSM
 LIRGLPDVTDCEEAAALDDLCAEATDVEDPEVECG

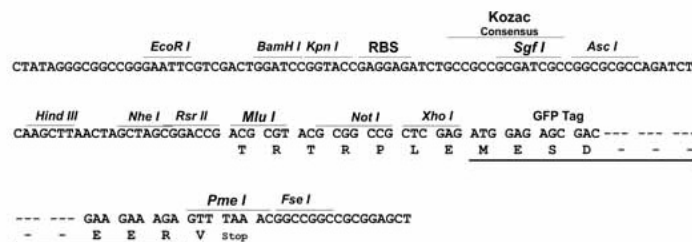
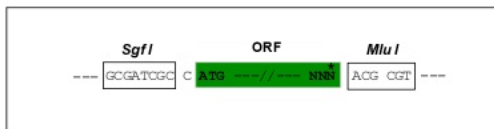
TRTRPLE - GFP Tag - V

Restriction Sites:

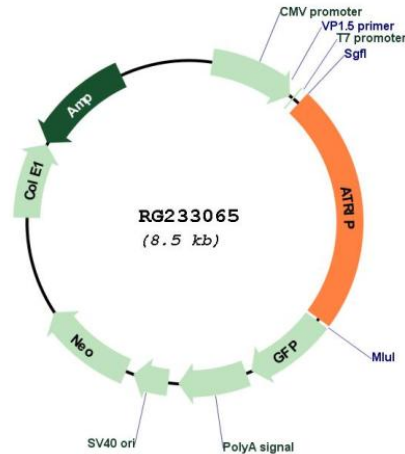
Sgfl-MluI

Cloning Scheme:

Cloning sites used for ORF Shuttling:



Plasmid Map:



ACCN: NM_001271022

ORF Size: 1992 bp

OTI Disclaimer: The molecular sequence of this clone aligns with the gene accession number as a point of reference only. However, individual transcript sequences of the same gene can differ through naturally occurring variations (e.g. polymorphisms), each with its own valid existence. This clone is substantially in agreement with the reference, but a complete review of all prevailing variants is recommended prior to use. [More info](#)

OTI Annotation: This clone was engineered to express the complete ORF with an expression tag. Expression varies depending on the nature of the gene.

Components: The ORF clone is ion-exchange column purified and shipped in a 2D barcoded Matrix tube containing 10ug of transfection-ready, dried plasmid DNA (reconstitute with 100 ul of water).

Reconstitution Method:

1. Centrifuge at 5,000xg for 5min.
2. Carefully open the tube and add 100ul of sterile water to dissolve the DNA.
3. Close the tube and incubate for 10 minutes at room temperature.
4. Briefly vortex the tube and then do a quick spin (less than 5000xg) to concentrate the liquid at the bottom.
5. Store the suspended plasmid at -20°C. The DNA is stable for at least one year from date of shipping when stored at -20°C.

RefSeq: [NM_001271022.1](#), [NP_001257951.1](#)

RefSeq Size: 2419 bp

RefSeq ORF: 1995 bp

Locus ID: 84126

UniProt ID: [Q8WXE1](#)

Cytogenetics: 3p21.31

Gene Summary: This gene encodes an essential component of the DNA damage checkpoint. The encoded protein binds to single-stranded DNA coated with replication protein A. The protein also interacts with the ataxia telangiectasia and Rad3 related protein kinase, resulting in its accumulation at intranuclear foci induced by DNA damage. Multiple transcript variants encoding different isoforms have been found for this gene. [provided by RefSeq, Aug 2012]