

Product datasheet for **RG233063**

Estrogen induced gene 121 protein (KIAA1324) (NM_001267049) Human Tagged ORF Clone

Product data:

Product Type:	Expression Plasmids
Product Name:	Estrogen induced gene 121 protein (KIAA1324) (NM_001267049) Human Tagged ORF Clone
Tag:	TurboGFP
Symbol:	KIAA1324
Synonyms:	EIG121; RP11-352P4.1
Mammalian Cell Selection:	Neomycin
Vector:	pCMV6-AC-GFP (PS100010)
E. coli Selection:	Ampicillin (100 ug/mL)



[View online »](#)

ORF Nucleotide
Sequence:

>RG233063 representing NM_001267049
Red=Cloning site Blue=ORF Green=Tags(s)

TTTTGTAATACGACTCACTATAGGGCGGCCGGGAATTCGTCGACTGGATCCGGTACCGAGGAGATCTGCC
GCCGCGATCGCC

ATGTACAATGGCCAAGCCGAAAACTGTAGCGAGGACCTTGAGGGGGCAGTGAAGCTGCCTGCCTCTG
GTGTGAAGACCCACTGCCACCCTGCAACCCAGGCTTCTTCAAAACCAACAACAGCACCTGCCAGCCCTG
CCCATATGGTTCTACTCCAATGGCTCAGACTGTACCCGCTGCCCTGCAGGGACTGAACCTGCTGTGGGA
TTTGAATACAATGGTGGAAACACGCTGCCACAACATGGAAACGACCGTTCTCAGTGGGATCAACTTCG
AGTACAAGGGCATGACAGGCTGGGAGGTGGCTGGTGATCACATTTACACAGCTGCTGGAGCCTCAGACAA
TGACTTCATGATTCTCACTCTGGTTGTGCCAGGATTTAGACCTCCGCAGTCGGTGTGGCAGACACAGAG
AATAAAGAGGTGGCCAGAATCACATTTGTCTTTGAGACCCTCTGTCTGTGAAGTGTGAGCTCTACTTCA
TGGTGGGTGTGAATTCTAGGACCAACACTCCTGTGGAGACGTGAAAGGTTCCAAAGGCAACAGTCCTA
TACCTACATCATTGAGGAGAACACTACCACGAGCTTACCTGGGCCTTCCAGAGGACCACATTTTCATGAG
GCAAGCAGGAAGTACACCAATGACGTTGCCAAGATCTACTCCATCAATGTACCAATGTTATGAATGGTG
TGGCCTCTACTGCCGTCCCTGTGCCCTAGAAGCCTCTGATGTGGGCTCCTCCTGCACCTCTTGTCTGC
TGGTACTATATTGACCGAGATTCAGGAACCTGCCACTCTGCCCACTAACACAATTCTGAAAGCCAC
CAGCCTTATGGTGTCCAGGCCTGTGTGCCCTGTGGTCCAGGGACCAAGAACAACAAGATCCACTCTCTGT
GCTACAACGATTGCACCTTCTCACGCAACTCCGACCAGGACTTTCAACTACAATTCTCCGCTTTGGC
AAACACTGTCACCTTGTCTGGAGGGCAAGCTTCACTTCCAAAGGGCTGAAATACTTCCATCACTTTACC
CTCAGTCTCTGTGAAACCAGGGTAGGAAAATGTCTGTGTGCACCGACAATGTCAGTACCTCCGGATT
CTGAGGGTGAGTCAGGGTTCTCCAATCTATCACAGCCTACGCTCTGCCAGGCAGTCATCATCCCCCAGA
GGTGACAGGCTACAAGGCCGGGTTTCTCACAGCCTGTACGCTTGTGATCGACTTATTGGGGTGACA
ACAGATATGACTCTGGATGGAATCACCTCCCCAGCTGAACTTTTCCACCTGGAGTCTTGGGAATACCGG
ACGTGATCTTCTTTTATAGGTCCAATGATGTGACCCAGTCTGCAGTTCTGGGAGATCAACCACCATCCG
CGTCAGGTGCAGTCCACAGAAAAGTGTCCCTGGAAGTTTGTGCTGCCAGGAACGTGCTCGGATGGGACC
TGTGATGGCTGCAACTTCACTTCTGTGGGAGAGCGGGCTGCTGCCCGCTCTGCTCAGTGGCTGACT
ACCATGCTATCGTCAGCAGCTGTGTGGCTGGGATCCAGAAGACTACTTACGTGTGGCGAGAACCCAAAGT
ATGCTCTGGTGGCATTCTCTGCCTGAGCAGAGAGTACCATCTGCAAAACCATAGATTTCTGGCTGAAA
GTGGGCATCTCTGCAGGCACCTGTACTGCCATCCTGCTCACCGTCTTGACCTGCTACTTTTGGAAAAGA
ATCAAAAAGTACAGTACAAGTACTCCAAGCTGGTATGAATGCTACTCTCAAGGACTGTGACCTGCCAGC
AGCTGACAGCTGCGCCATCATGGAAGGCGAGGATGTAGAGGACGACCTCATCTTTACCAGCAAGAAGTCA
CTCTTTGGGAAGATCAAATCATTACCTCCAAGAGGACTCCTGATGGATTTGACTCAGTCCGCTGAAGA
CATCCTCAGGAGGCTAGACATGGACCTG

ACGCGTACGCGGGCCGCTCGAG - GFP Tag - GTTTAA

Protein Sequence: >RG233063 representing NM_001267049
 Red=Cloning site Green=Tags(s)

MYKWAKPKICSEDLGAVKLPASGVKTHCPPCNPGFCKTNNSTCQPCPYGSYSNGSDCTRCPCAGTEPAVG
 FEYKWWNTLPTNMETT VLSGINFEYKGMTGWEVAGDHIYTAAGASDNDFMILTLVVPGRFPQSVMADE
 NKEVARITFVFETLCSVNCELYFMVGVNSRTNTPVETWKGSKGKQSYTYIEENTTSFTWAFQRTTFHE
 ASRKYTNDVAKIYSINVTNVMNGVASYCRPCALEASDVGSSTSCPAGYYIDRDSGTCHSCTNTILKAH
 QPYGVQACVPCGPGTKNNKIHSLCYNDCTFSRNTPTRTFNYNFSALANTVTLAGGPSFTSKGLKYFHHFT
 LSLCGNQGRKMSVCTDNVTDLRIPGEGSGFSKITAYVCQAVIIPPEVTGYKAGVSSQPVSLADRLIGVT
 TDMTLDGITSPAELFHLES LGIPDVIFFYRSNDVTQSCSSGRSTTIRVRCSPQKTVPGSLLLPGTCS DGT
 CDGCNFHFLWESAAACPLCSVADYHAI VSSCVAGIQKTTYVWREP KLCSGGISLPEQRVTICKTIDFWLK
 VGISAGTCTAILLTVLTCYFWKKNQKLEYKYSKLV MNATLKDCDLPAADSCAIMEGEDVEDDLIFTSKKS
 LFGKIKSFTSKRTPDGFDSVPLKTSSGGLDMDL

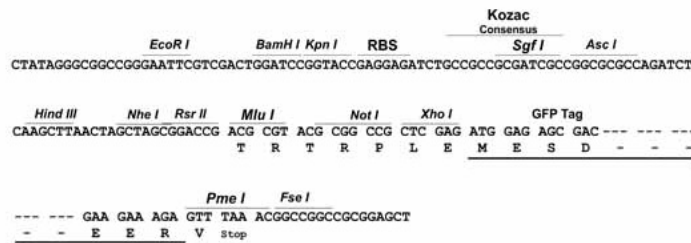
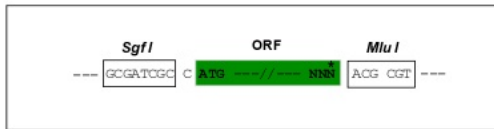
TRTRPLE - GFP Tag - V

Restriction Sites:

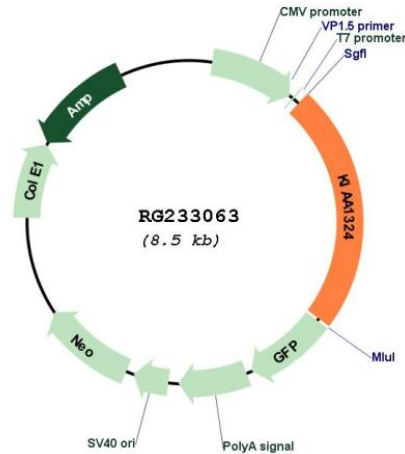
SgfI-MluI

Cloning Scheme:

Cloning sites used for ORF Shuttling:



Plasmid Map:



ACCN: NM_001267049

ORF Size: 1989 bp

OTI Disclaimer: The molecular sequence of this clone aligns with the gene accession number as a point of reference only. However, individual transcript sequences of the same gene can differ through naturally occurring variations (e.g. polymorphisms), each with its own valid existence. This clone is substantially in agreement with the reference, but a complete review of all prevailing variants is recommended prior to use. [More info](#)

OTI Annotation: This clone was engineered to express the complete ORF with an expression tag. Expression varies depending on the nature of the gene.

Components: The ORF clone is ion-exchange column purified and shipped in a 2D barcoded Matrix tube containing 10ug of transfection-ready, dried plasmid DNA (reconstitute with 100 ul of water).

Reconstitution Method:

1. Centrifuge at 5,000xg for 5min.
2. Carefully open the tube and add 100ul of sterile water to dissolve the DNA.
3. Close the tube and incubate for 10 minutes at room temperature.
4. Briefly vortex the tube and then do a quick spin (less than 5000xg) to concentrate the liquid at the bottom.
5. Store the suspended plasmid at -20°C. The DNA is stable for at least one year from date of shipping when stored at -20°C.

RefSeq: [NM_001267049.1](#), [NP_001253978.1](#)

RefSeq Size: 5990 bp

RefSeq ORF: 1991 bp

Locus ID: 57535

Cytogenetics: 1p13.3

Protein Families: Transmembrane

Gene Summary: Expression of this gene is induced by estrogen and the encoded protein has been characterized as a transmembrane protein. The encoded protein has been found in to correlate with survival in certain carcinomas (PMID: 21102415) and may be important for cellular response to stress (PMID: 21072319). Alternative splicing results in multiple transcript variants. [provided by RefSeq, May 2012]