

Product datasheet for **RG233058**

CFAP94 (NM_001204101) Human Tagged ORF Clone

Product data:

Product Type:	Expression Plasmids
Product Name:	CFAP94 (NM_001204101) Human Tagged ORF Clone
Tag:	TurboGFP
Symbol:	CFAP94
Synonyms:	CASC1; LAS1; PPP1R54
Mammalian Cell Selection:	Neomycin
Vector:	pCMV6-AC-GFP (PS100010)
E. coli Selection:	Ampicillin (100 ug/mL)



[View online »](#)

ORF Nucleotide
Sequence:

>RG233058 representing NM_001204101
Red=Cloning site Blue=ORF Green=Tags(s)

TTTTGTAATACGACTCACTATAGGGCGGCCGGAATTCGTCGACTGGATCCGGTACCGAGGAGATCTGCC
GCC**CGCATCGCC**

ATGGATCTAGAAAGGAGAAATGAAGAACTTGAAGAACTTTATTTATTAGAGAGGTGTTTTCTGAAGCAG
AGAAATTGAAACAGGAACTAAATTGCTTTCTCAGTGGAAGCACTACATTCATGTGATGGGAGTCTGTA
TCCTTCAGTAGCCCAAGAAATGAACACGTTTATTAGTTTGTGAAAGAGAAAAACAATGAGACTTTTGAG
GAAGTGATTGAGAAGAGTAAAGTAGTGCTAAATTAATTGAGAAATTGAAATTTATTTACTGGAAACTC
CACCATGTGATTTGCAAGATAAAAAATAATACAGTACCAAGAATCAATACTACAACCTGCAGGAGCTCCT
TCATCTTAAATTCGGTGTAGCCACAGAAATACTTCTCAAACAAGCTAGTACTTTGGCAGATCTGGACAGT
GGAAATATGAAAAAGTCATTAAGATGAAATGTTACTCTGTATGTGTGGGCAAACCTCAAGAAGAATC
CAAGGCACAGAAGTGTTAGATTCTGAAACACAAATTTGGATTTGAGATTCGAAGGATATTAGCAACAAG
TGACATTGCTGTACGACTCCTGCATACCCACTATGATCATGTTTCTGCACTGCACCCTGTTTCAACACCA
TCAAAAGAATACACTTCTGCAGTAACTGAGCTTGTCAAAGATGATGTTAAGAATGTAGAAAAAGCAATCA
GCAAGGAGGTCTGAAGAAGAGTCCAAACAACAAGAAAGAGGGTCTCACTTAATTCAGGAGGAAGAAATAAA
AGTTGAGGAGGAACAAGGTGATATTGAAGTGAAGTGAAGTCTGCTGAGGAAGAATCTGAAGCCATAAAA
TGTGAACGAGAGATGAAAGTATTAAGTGAAGTGTTCAGCAGCACAGTTGTTGCTGGTAGAGAATTCTT
CTGAAAAGCCAGATTTCTTTGAAGACAATGTGGTGGATTTATGCCAGTTCACAACCTCGGGTGGAGTATA
CCACTTGGATATTTTGGAGCTTCTCCACAGTGTAAACCAAGTGAAGGGATGGATGATTGTGGAATACTC
AAAGAAGGATTACAGAAATACACATATCCTCCGAAACTACAGAAGAGTTTGAGACAGAAATGCTTTCC
CACCTATAGAGGTCACACTTGAGGTTTCATGAGAATGTAATCTTTTTTTGAGGATCCTGTGGTTGAAGGTG
GGATGCTGAAGGTAAACATTGGAGAAGTATGGCATCAGCAATGTATCCTACAAACCAAAAGAAAGACTT
GTAACATTCAGCCTGGACACCTTTGGCCCTGTTACCTTGATTCAAGATGCTCATATTAACATGCCGTACC
AGTCATGGGAACTAAGACCCTTGATGTAATAAAGTACTTTTAACTGTGACTACAGTATTTACTGAGAT
TCAAATACAAATTAAGGAAAACCTCTGCATGTTATCTTCAATCAAACCTAAAAGACAAGAAACACATCTCT
ATTTTGAAGGAACCTGGATGACTCCTATTCTTTTATTATTGCTTTGAAAGAAGCTGGACTGAATATCT
TTCCTACTAGACACTCTCATTATTTATGTTATTATAACAATAAGGTTCTTTGGTAGAAGTGAAAGCTTA
TCGACAGATGGCCCTACTAAGTTCTGCTTTTGCATTTGGTTGGAGCAAGTGGAACTACTATGTAATTCT
ACAAAAGTCGATTTAAGGTGAGGGAACACCTTACTGAAGAATGTACTGAGAATCCTAATTTGGGCCCTTT
TAATGTTTGTGTTGACAGAGCACAAGACTGAAGATCAAGGAAGAGAGTGAGGCATTTTCTGAAGCACT
TAAAGAAGAACTGAGTTTCATTCTACTTTATATCACATGGTGAAGGATTTTGTCTCTGAGGAAGCAATG
GAGAAAGTCAGGAGTTCCAACCTGTCAGTTTGTCAACTCTGTGTGCCACATGCTGCTCTCTACCAGATTGC
TCAGTACTCC

ACGCGTACGCGGCCGCTCGAG - GFP Tag - GTTTAA

Protein Sequence: >RG233058 representing NM_001204101
 Red=Cloning site Green=Tags(s)

MDLERRNEELEEYLLERCFPEAEKQETKLLSQWKHYIQCDGSPDPSVAQEMNTFISLWKEKTNETFE
 EVIEKSKVVLNLIEKLFILLETPPCDLQDKNIQYQESILQLQELLHLKFGVATEILLKQASTLADLDS
 GNMEKVIKDENVTLVWVANLKKNPRHRSVRFSETQIGFEIPRILATSDIAVRLHHTHYDHSALHPVSTP
 SKEYTSAVTELVKDDVKNVEKAI SKEVEEESKQQERGSHLIQEEEIKVEEEQGDIEVKMSSAESEAIK
 CEREMKVLSETVSAQLLLVENSEKPDFFEDNVVDLCQFTTLGGVYHLDILELPPQCKPVKGWMI VEIL
 KEGLQKYTYPPETTEEFETENAFPPIEVTLEVHENVIFFEDPVVVRWDAEGKHWRTDGISNVSYPKPKERL
 VTFSLDTFGPVTLIQDAHINMPYQSWELRPLDVNKVLLTVTTVFTEIQIQIKENL CMLSSIKLKDKKHIS
 ILEGTWMTPIPFIIALKEAGLNIFPTRHSHFYVI INNKVPLVEVKAYRQ MALLSSAFAGWSKNLLCNS
 TKVVFKVREHLTEECTENPNWALLMFGDRAQLKIKEESEAFSEALKEETEFHSTLYHMKDFASEEAM
 EKVRSSNCQFVNSVCHMLLSTRLLSYS

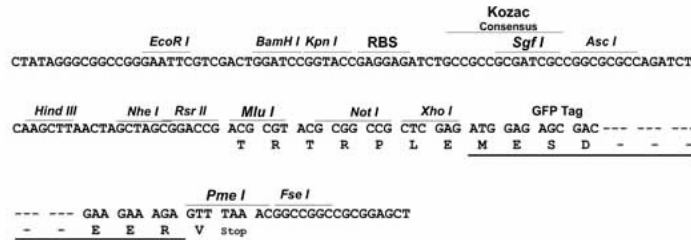
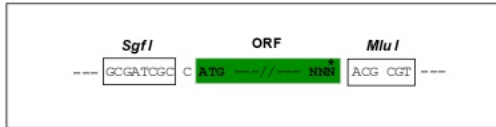
TRTRPLE - GFP Tag - V

Restriction Sites:

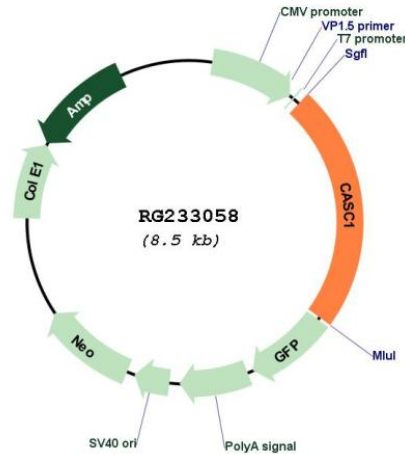
SgfI-MluI

Cloning Scheme:

Cloning sites used for ORF Shuttling:



Plasmid Map:



ACCN: NM_001204101

ORF Size: 1971 bp

OTI Disclaimer: The molecular sequence of this clone aligns with the gene accession number as a point of reference only. However, individual transcript sequences of the same gene can differ through naturally occurring variations (e.g. polymorphisms), each with its own valid existence. This clone is substantially in agreement with the reference, but a complete review of all prevailing variants is recommended prior to use. [More info](#)

OTI Annotation: This clone was engineered to express the complete ORF with an expression tag. Expression varies depending on the nature of the gene.

Components: The ORF clone is ion-exchange column purified and shipped in a 2D barcoded Matrix tube containing 10ug of transfection-ready, dried plasmid DNA (reconstitute with 100 ul of water).

Reconstitution Method:

1. Centrifuge at 5,000xg for 5min.
2. Carefully open the tube and add 100ul of sterile water to dissolve the DNA.
3. Close the tube and incubate for 10 minutes at room temperature.
4. Briefly vortex the tube and then do a quick spin (less than 5000xg) to concentrate the liquid at the bottom.
5. Store the suspended plasmid at -20°C. The DNA is stable for at least one year from date of shipping when stored at -20°C.

RefSeq: [NM_001204101.2](#)

RefSeq Size: 2317 bp

RefSeq ORF: 1974 bp

Locus ID: 55259

UniProt ID: [Q6TDU7](#)

Cytogenetics: 12p12.1

Gene Summary: Via its association with the multisubunit axonemal dynein complex, is potentially involved in the regulation of cilia function. May also act as a cell cycle regulator.[UniProtKB/Swiss-Prot Function]