

Product datasheet for **RG233046**

TLR4 (NM_138557) Human Tagged ORF Clone

Product data:

Product Type:	Expression Plasmids
Product Name:	TLR4 (NM_138557) Human Tagged ORF Clone
Tag:	TurboGFP
Symbol:	TLR4
Synonyms:	ARMD10; CD284; TLR-4; TOLL
Mammalian Cell Selection:	Neomycin
Vector:	pCMV6-AC-GFP (PS100010)
E. coli Selection:	Ampicillin (100 ug/mL)



[View online »](#)

ORF Nucleotide Sequence:

>RG233046 representing NM_138557
 Red=Cloning site Blue=ORF Green=Tags(s)

TTTTGTAATACGACTCACTATAGGGCGGCCGGAATTCGTCGACTGGATCCGGTACCGAGGAGATCTGCC
 GCC**CGATCGCC**

ATGCCCTACTCAATCTCTCTTTAGACCTGTCCCTGAACCCTATGAACTTTATCCAACCAGGTGCATTTA
 AAGAAATTAGGCTTCATAAGCTGACTTTAAGAAATAATTTTATAGTATTAATGTAATGAAAACCTGTAT
 TCAAGGCTCGGCTGGTTTAGAAGTCCATCGTTTGGTTCTGGGAGAATTTAGAAATGAAGGAACTTGAA
 AAGTTTGACAAATCTGCTCTAGAGGGCCTGTGCAATTTGACCATTGAAGAATTCGATTAGCATACTTAG
 ACTACTACCTCGATGATATTATTGACTTATTTAATGTTTGACAAATGTTTCTTCATTTCCCTGGTGAG
 TGTGACTATTGAAAGGGTAAAAGACTTTTCTTATAATTTTCGGATGGCAACATTTAGAATTAGTAACTGT
 AAATTTGGACAGTTTCCACATTGAAACTCAAATCTCTCAAAGGCTTACTTTCACCTCCAACAAAGGTG
 GGAATGCTTTTTCAGAAGTTGATCTACCAAGCCTTGAGTTTCTAGATCTCAGTAGAAATGGCTTGAGTT
 CAAAGTTGCTGTCTCAAAGTGATTTTGGGACAACCAGCCTAAAGTATTTAGATCTGAGCTTCAATGGT
 GTATTACCATGAGTTCAAACCTCTTGGGCTTAGAACAACTAGAACATCTGGATTTCCAGATTCCAATT
 TGAACAAATGAGTGAGTTTTAGTATTCTATCACTCAGAAACCTCATTACCTTGACATTTCTCATACT
 TCACACCAGAGTTGCTTTCAATGGCATCTTCAATGGCTTGTCCAGTCTCGAAGTCTTGAAAATGGCTGGC
 AATTCTTTCCAGGAAAACCTCCTTCCAGATATCTTACAGAGCTGAGAAAACCTTGACCTTCTGGACCTCT
 CTCAGTGTCAACTGGAGCAGTTGTCTCCAAACAGCATTTAACTCACTCTCCAGTCTCAGGTAATAATAT
 GAGCCACAACAACCTCTTTTCAATGGATACGTTTCTTATAAGTGTCTGAACTCCCTCCAGGTTCTTGAT
 TACAGTCTCAATCACATAATGACTTCAAAAAACAGGAACTACAGCATTTTCCAAGTAGTCTAGCTTTCT
 TAAATCTTACTCAGAATGACTTTGCTTGTACTTGTGAACACCAGAGTTTCTGCAATGGATCAAGGACCA
 GAGGCAGCTCTTGGTGAAGTTGAACGAATGGAATGTGCAACACCTTCAGATAAGCAGGGCATGCCTGTG
 CTGAGTTTGAATATCACCTGTCAGATGAATAAGACCATCATTGGTGTGTGGTCTCAGTGTGCTTGTAG
 TATCTGTTGTAGCAGTTCTGGTCTATAAGTTCTATTTTCACTGATGCTTCTTGTGGTGCATAAAGTA
 TGGTAGAGGTGAAAACATCTATGATGCCTTTGTTATCTACTCAAGCCAGGATGAGGACTGGGTAAGGAAT
 GAGCTAGTAAAGAATTTAGAAGAAGGGTGCCTCCATTTAGCTCTGCCTTCACTACAGAGACTTTATTC
 CCGGTGTGGCCATTGCTGCCAACATCATCCATGAAGTTTCCATAAAAGCCGAAAGGTGATTGTTGGT
 GTCCCAGCACTTCCAGAGCCGCTGGTGTATCTTTGAATATGAGATTGCTCAGACCTGGCAGTTTCTG
 AGCAGTCTGCTGGTATCATCTTATTGCTCCTGCAGAAGTGGAGAAGACCCTGCTCAGGCAGCAGGTGG
 AGCTGTACCGCCTTCTCAGCAGGAACACTTACCTGGAGTGGGAGGACAGTGTCTGGGGCCGCACATCTT
 CTGGAGACGACTCAGAAAAGCCCTGCTGGATGGTAAATCATGGAATCCAGAAGGAACAGTGGGTACAGGA
 TGAATTGGCAGGAAGCAACATCTATC

ACGCGTACGCGGCCGCTCGAG - GFP Tag - GTTTAA

Protein Sequence:

>RG233046 representing NM_138557
 Red=Cloning site Green=Tags(s)

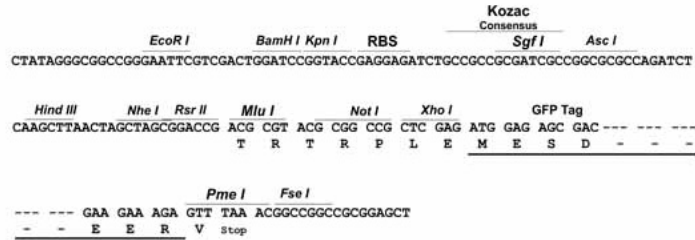
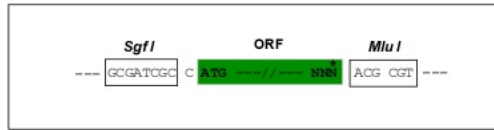
MPLLNLSDLNPMNFIQPGAFKEIRLHKLTLRNNFDSLNMVMTCIQGLAGLEVHRLVLGFRNEGNLE
 KFDKSALEGLCNLTIEEFRLAYLDYLLDDIIDLFNCLTNVSSFSLVSVTIERVKDFSYNFGWQHLELVNC
 KFGQFPTLKLKSLKRLTFTSNKGGNAFSEVDLPSLEFLDLNRNGLSFKGCCSQSDFGTTSLKYLDLDFNG
 VITMSSNFLGLEQLEHLDFQHSNLKQMSFVSFLSLRNL IYLDISHTHTRVAFNGIFNGLSSLEVLKMG
 NSFQENFLPDIFTELRLNLTFLDL SQCQLEQLSPTAFNSLSSLQVLNMSHNNFFSLDTPPYKCLNSLQVLD
 YSLNHIMTSKKQELQHFPSLAFNLNTQNDFACTCEHQSFLLQWIKDQRQLLVEVERMECATPSDKQMPV
 LSLNITCQMNKTIIGVSVLSVLVVSVAVLVYKFYFHLMLLAGCIKYGRGENIYDAFVIYSSQDEDWVRN
 ELVKNLEEGVPPFQLCLHYRDFIPGVAIAANIIEHGFHKSARKVIVVVSQHF IQSRWICIFEYEAQTWQFL
 SSRAGIIFIVLQKVEKTLRQVELYRLLSRNTYLEWEDSVLGRHIFWRRLRKALLDGKSWNPEGTGVTG
 CNWQEATSI

TRTRPLE - GFP Tag - V

Restriction Sites: Sgfl-MluI

Cloning Scheme:

Cloning sites used for ORF Shutting:



ACCN: NM_138557

ORF Size: 1917 bp

OTI Disclaimer: Due to the inherent nature of this plasmid, standard methods to replicate additional amounts of DNA in E. coli are highly likely to result in mutations and/or rearrangements. Therefore, OriGene does not guarantee the capability to replicate this plasmid DNA. Additional amounts of DNA can be purchased from OriGene with batch-specific, full-sequence verification at a reduced cost. Please contact our customer care team at custsupport@origene.com or by calling 301.340.3188 option 3 for pricing and delivery.

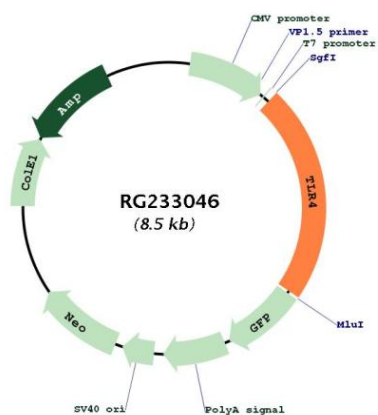
The molecular sequence of this clone aligns with the gene accession number as a point of reference only. However, individual transcript sequences of the same gene can differ through naturally occurring variations (e.g. polymorphisms), each with its own valid existence. This clone is substantially in agreement with the reference, but a complete review of all prevailing variants is recommended prior to use. [More info](#)

OTI Annotation: This clone was engineered to express the complete ORF with an expression tag. Expression varies depending on the nature of the gene.

Components: The ORF clone is ion-exchange column purified and shipped in a 2D barcoded Matrix tube containing 10ug of transfection-ready, dried plasmid DNA (reconstitute with 100 ul of water).

Reconstitution Method:	<ol style="list-style-type: none">1. Centrifuge at 5,000xg for 5min.2. Carefully open the tube and add 100ul of sterile water to dissolve the DNA.3. Close the tube and incubate for 10 minutes at room temperature.4. Briefly vortex the tube and then do a quick spin (less than 5000xg) to concentrate the liquid at the bottom.5. Store the suspended plasmid at -20°C. The DNA is stable for at least one year from date of shipping when stored at -20°C.
RefSeq:	NM_138557.3
RefSeq Size:	5494 bp
RefSeq ORF:	1920 bp
Locus ID:	7099
UniProt ID:	O00206
Cytogenetics:	9q33.1
Domains:	TIR, LRRCT, LRR, LRR_TYP
Protein Families:	Druggable Genome, Transmembrane
Protein Pathways:	Pathogenic Escherichia coli infection, Toll-like receptor signaling pathway
Gene Summary:	<p>The protein encoded by this gene is a member of the Toll-like receptor (TLR) family which plays a fundamental role in pathogen recognition and activation of innate immunity. TLRs are highly conserved from Drosophila to humans and share structural and functional similarities. They recognize pathogen-associated molecular patterns that are expressed on infectious agents, and mediate the production of cytokines necessary for the development of effective immunity. The various TLRs exhibit different patterns of expression. In silico studies have found a particularly strong binding of surface TLR4 with the spike protein of severe acute respiratory syndrome coronavirus 2 (SARS-CoV-2), the causative agent of Coronavirus disease-2019 (COVID-19). This receptor has also been implicated in signal transduction events induced by lipopolysaccharide (LPS) found in most gram-negative bacteria. Mutations in this gene have been associated with differences in LPS responsiveness, and with susceptibility to age-related macular degeneration. Multiple transcript variants encoding different isoforms have been found for this gene. [provided by RefSeq, Aug 2020]</p>

Product images:



Circular map for RG233046