

Product datasheet for **RG233045**

CUX1 (NM_001202546) Human Tagged ORF Clone

Product data:

Product Type:	Expression Plasmids
Product Name:	CUX1 (NM_001202546) Human Tagged ORF Clone
Tag:	TurboGFP
Symbol:	CUX1
Synonyms:	CASP; CDP; CDP/Cut; CDP1; Clox; COY1; CUTL1; CUX; Cux/CDP; GDDI; GOLIM6; Nbla10317; p75; p100; p110; p200
Mammalian Cell Selection:	Neomycin
Vector:	pCMV6-AC-GFP (PS100010)
E. coli Selection:	Ampicillin (100 ug/mL)



[View online »](#)

ORF Nucleotide Sequence:

>RG233045 representing NM_001202546
 Red=Cloning site Blue=ORF Green=Tags(s)

TTTTGTAATACGACTCACTATAGGGCGGCCGGAATTCGTCGACTGGATCCGGTACCGAGGAGATCTGCC
 GCC**CGGATCGCC**

ATGGCGCCAATGTGGGATCGATGTTTCAATATTGGAAGCGCTTTGATTTACAGCAGCTGCAGGATTTGC
 GCAAGCAGGTAGCGCCGCTGCTGAAGAGTTTCCAAGGAGAGATTGATGCACTGAGTAAAAGAAGCAAGGA
 AGCTGAAGCAGCTTTCTTGAATGTCTACAAAAGATTGATTGACGTCCCAGATCCCGTACCGACTTTGGAT
 CTCGGACAGCAACTCCAGCTCAAAGTGCAGCGCCTGCACGATATTGAAACAGAGAACCAGAAACTTAGGG
 AAAGTCTGGAAGAATAACAACAGGAATTTGCTGAAGTGAATAAACAAGAGTTACGATAAAAGCACTTAA
 AGAGAAAATCCGAGAATATGAACAGACTGAAGAACCAAGCCGAAACCATAGCTCTTGAGAAGGAACAG
 AAGTTACAGAATGACTTTGCAGAAAAGGAGAGAAAGCTGCAGGAGACACAGATGTCCACCACCTCAAAGC
 TGGAGGAAGCTGAGCATAAAGTTTACAGAGCTACAACAGCCCTGGAAAAAACTCGAACAGAAATTATTTGA
 CCTGAAAACAAAATACGATGAAGAACTACTGCAAGGCCGACGAGATTGAAATGATCATGACGGACCTT
 GAAAGGGCAAACAGAGGGCAGAGGTGGCTCAGAGAGAGGGCAGACCTTAAGGGAAACAGCTCTCATCGG
 CCAATCACTCCCTCCAGCTGGCCTCACAGATCCAGAAGGCACAGACGTGGCCATAGAGGTGCTGACCCG
 CTCCAGCCTAGAAGTTGAGTTGGCCGCCAAGGAGCGGGAGATCGCACAGCTGGTGGAGGACGTGCAGAGA
 CTCCAGGCCAGCCTACCAAGCTGCGGGAGAATTCGGCCAGCCAGATCTCACAGCTTGAGCAGCAGCTGA
 GCGCAAAAACAGCACACTCAAACAAGTGAAGAAAACTCAAAGGCCAGGCTGACTATGAAGAGGTGAA
 GAAAGAGCTGAACATTCTGAAGTCCATGGAGTTTGACCGTCCGAGGGCGCTGGGACACAGGATGCGGCC
 AAGCCCTGGAGGTGCTGTTGCTGGAGAAGAACCCTGCTGCAAGTCCGATCCGAGAACGCCGCTGCGCATCT
 CCAACAGCGACCTGAGCGGACGCTGTGCGGAGCTGCAAGTCCGATCAGTGGCTGTGGCCACAGCCAC
 TGAGCAGAGAGAGCTGATCGCCCGCTGGAGCAGGACCTGAGCATCATTAGTCCATCCAGCGGCCCGAT
 GCCGAGGGTGGCCTGAGCACCGCTGGAGAAGATCCCAGAGCCCATCAAAGAGGCCACTGCCCTATTCT
 ACGGACCTGCAGCACCAGCCAGCGGTGCCCTCCCAGAGGGCCAGGTGGATTCACTGCTTTCCATCATCTC
 CAGCCAGAGGGAGCGCTTCCGTGCCCGAACCAGGAGCTTGAGGCCGAGAACCCTGGCCAGCACACC
 CTCCAGGCCCTGCAGAGTGAAGTGGACAGCCTGCGCGCCGACAACATCAAGCTCTTTGAGAAGATCAAGT
 TCCTGCAGAGCTACCCTGGCCGGGCGAGCGGCAGTGATGACACGGAGCTGCGGTACTCGTCCAGTACGA
 GGAGCGCCTGGACCCCTTCTCTCTTCCAGCAAGCGGGAGCGGCAGAGGAAGTACCTGAGCTTGAGTCCC
 TGGGACAAGGCCACCCTCAGCATGGGGCTCTGGTTCTCTCAACAAGATGGCGGCACCATCGGCTTCT
 TCTACACTGTTCTGACTGCCTGGTCTTCTGGTGTCTACAAGCTGGCATGGAGCGAGAGCATGGA
 GAGGGACTGTGCCACCTTCTGCGCAAGAAGTTCGCTGACCACCTGCACAAGTCCACGAGAATGACAAC
 GGGGCTGCGGCTGGTACTTGTGGCAG

ACGCGTACGCGGCCGCTCGAG - GFP Tag - GTTTAA

Protein Sequence:

>RG233045 representing NM_001202546
 Red=Cloning site Green=Tags(s)

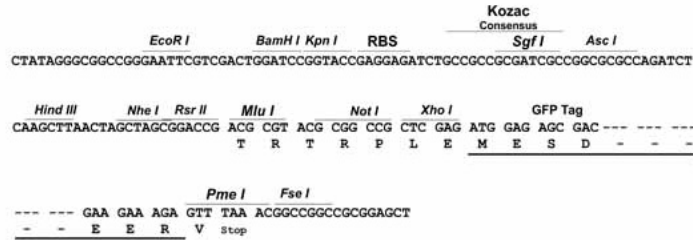
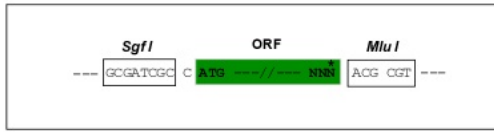
MAANVGSMFQYWKRFDLQQLQDLRKQVAPLLKSFQGEIDALSKRSKEEAAFLNVYKRLIDVDPVPALD
 LGQQLQLKVQRLHDIETENQKLRETL EEYNKEFAEVKNQEVTIKALKEKIREYEQTLKNQAEITIALEKEQ
 KLQNDFAEKERKLQETQMSSTSKLEEAHKVQSLQTAL EKTRTEFLDKTKYDEETTAKADEIEMIMTDL
 ERANQRAEVAQREAE TLREQLSSANHSLQLASQIQKAPDV AIEVLTRSSLEVELAAKEREIAQLVEDVQR
 LQASLTKLRENSASQISQLEQQLSAKNSTLKLQLEEKLGQADYEEVKELNILKSMEFAPSEGAGTQDAA
 KPLEVLLLEKNRSLQSENAALRISNSDL SGRCAELQVRITEAVATATEQRELIARLEQDLSIIQSIQRPD
 AEGAAEHRLKIP EPIKEATALFYGPAAPASGALPEGQVDSLLSIISSQRERFRARNQELEAENRLAQHT
 LQALQSELD SLRADNIKLF EKIKFLQSYPRGSGSDDELRYSSQYEERLDPFSSFSKRERQRKYLSP
 WDKATLSMGRVLVLSNMARTIGFFYTLFLHCLVFLVLYKLAWSESMERDCATFCAKKFADHLHKFHENDN
 GAAAGDLWQ

TRTRPLE - GFP Tag - V

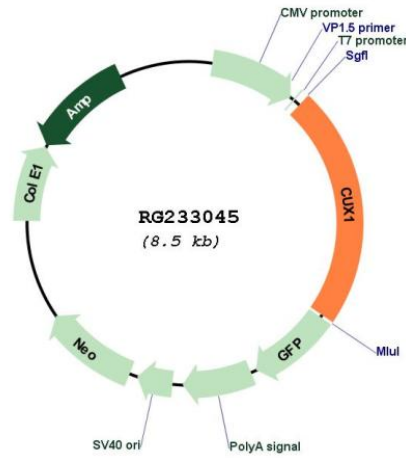
Restriction Sites: SgfI-MluI

Cloning Scheme:

Cloning sites used for ORF Shutting:



Plasmid Map:



ACCN: NM_001202546

ORF Size: 1917 bp

OTI Disclaimer:	The molecular sequence of this clone aligns with the gene accession number as a point of reference only. However, individual transcript sequences of the same gene can differ through naturally occurring variations (e.g. polymorphisms), each with its own valid existence. This clone is substantially in agreement with the reference, but a complete review of all prevailing variants is recommended prior to use. More info
OTI Annotation:	This clone was engineered to express the complete ORF with an expression tag. Expression varies depending on the nature of the gene.
Components:	The ORF clone is ion-exchange column purified and shipped in a 2D barcoded Matrix tube containing 10ug of transfection-ready, dried plasmid DNA (reconstitute with 100 ul of water).
Reconstitution Method:	<ol style="list-style-type: none">1. Centrifuge at 5,000xg for 5min.2. Carefully open the tube and add 100ul of sterile water to dissolve the DNA.3. Close the tube and incubate for 10 minutes at room temperature.4. Briefly vortex the tube and then do a quick spin (less than 5000xg) to concentrate the liquid at the bottom.5. Store the suspended plasmid at -20°C. The DNA is stable for at least one year from date of shipping when stored at -20°C.
RefSeq:	NM_001202546.3
RefSeq Size:	2818 bp
RefSeq ORF:	1920 bp
Locus ID:	1523
UniProt ID:	Q13948
Cytogenetics:	7q22.1
Protein Families:	Transcription Factors, Transmembrane
Gene Summary:	The protein encoded by this gene is a member of the homeodomain family of DNA binding proteins. It may regulate gene expression, morphogenesis, and differentiation and it may also play a role in the cell cycle progression. Several alternatively spliced transcript variants encoding different isoforms have been identified.[provided by RefSeq, Feb 2011]