

## Product datasheet for **RG233036**

### Growth hormone receptor (GHR) (NM\_001242401) Human Tagged ORF Clone

#### Product data:

|                           |   |
|---------------------------|---|
| Product Type:             | Expression Plasmids   |
| Product Name:             | Growth hormone receptor (GHR) (NM_001242401) Human Tagged ORF Clone |
| Tag:                      | TurboGFP  |
| Symbol:                   | GHR   |
| Synonyms:                 | GHBP; GHIP  |
| Mammalian Cell Selection: | Neomycin  |
| Vector:                   | pCMV6-AC-GFP (PS100010)   |
| E. coli Selection:        | Ampicillin (100 ug/mL)  |



[View online »](#)

**ORF Nucleotide Sequence:**

>RG233036 representing NM\_001242401  
 Red=Cloning site Blue=ORF Green=Tags(s)

TTTTGTAATACGACTCACTATAGGGCGGCCGGAATTCGTCGACTGGATCCGGTACCGAGGAGATCTGCC  
 GCCGCGATCGCC

ATGGATCTCTGGCAGCTGCTGTTGACCTTGGCACTGGCAGGATCAAGTATGCTTTTTCTGGAAGTGAAG  
 CCACAGCAGCTATCCTTAGCAGAGCACCTGGAGTCTGCAAAGTGTAAATCCAGGCCTAAAGACAAATTC  
 TTCTAAGGAGCCTAAATTCACCAAGTGCCTTACCTGAGCGAGAGACTTTTTTCATGCCACTGGACAGAT  
 GAGGTTTATCATGGTACAAAGAACCTAGGACCCATACAGCTGTTCTATACCAGAAGGAACACTCAAGAAT  
 GGACTCAAGAATGGAAAGAATGCCCTGATTATGTTTCTGCTGGGAAAACAGCTGTTACTTTAATTCATC  
 GTTTACCTCCATCTGGATACCTTATTGTATCAAGCTAACTAGCAATGGTGGTACAGTGGATGAAAAGTGT  
 TTCTCTGTTGATGAAATAGTGAACCAGATCCACCCATTGCCCTCACTGGACTTTACTGAACGTCAGTT  
 TAACTGGGATTCATGCAGATATCCAAGTGAAGTGGGAAGCACCAAGTGCAGATATTCAGAAAAGGATG  
 GATGGTTCTGGAGTATGAACTTCAATACAAAGAAGTAAATGAAACTAAATGGAAAATGATGGACCCTATA  
 TTGACAACATCAGTTCAGTGTACTCATTGAAAGTGGATAAGGAATATGAAGTGCCTGTGAGATCCAAAC  
 AACGAAACTCTGGAATTTATGGCGAGTTCACTGAGGTGCTCTATGTAACACTTCCTCAGATGAGCCAATT  
 TACATGTGAAGAAGATTTCTACTTTCCATGGCTCTTAATTATTATCTTTGGAATATTTGGGCTAACAGTG  
 ATGCTATTTGATTTCTATTTTCTAAACAGCAAAGGATTAATATGCTGATTTGCCCCAGTTCCAGTTC  
 CAAAGATTAAGGAATCGATCCAGATCTCCTCAAGGAAGGAAAATTAGAGGAGGTGAACACAATCTTAGC  
 CATTTCATGATAGCTATAAACCCGAATCCACAGTATGACTCTTGGGTTGAATTTATTGAGCTAGATATT  
 GATGAGCCAGATGAAAAGACTGAGGAATCAGACACAGACAGACTTCTAAGCAGTGACCATGAGAAATCAC  
 ATAGTAACCTAGGGGTGAAGGATGGCGACTCTGGACGTACCAGCTGTTGTGAACCTGACATCTGGAGAC  
 TGATTTCAATGCCAATGACATACATGAGGGTACCTCAGAGGTTGCTCAGCCACAGAGGTTAAAAGGGGAA  
 GCAGATCTCTTATGCCTTGACCAGAAGAATCAAAATAACTCACCTTATCATGATGCTTGCCTGCTACTC  
 AGCAGCCAGTGTATCCAAGCAGAGAAAAACAACCAACCACTTCCTACTGAAGGAGCTGAGTCAAC  
 TCACCAAGCTGCCATATTCAGCTAAGCAATCCAAGTTCCTGTCAAACATCGACTTTTATGCCAGGTG  
 AGCGACATTACACCAGCAGGTAGTGTGGTCTTTCCCGGGCCAAAAGAATAAGGCAGGGATGTCCCAAT  
 GTGACATGCACCCGAAATGGTCTCACTCTGCCAAGAAAATTCCTTATGGACAATGCCTACTTCTGTGA  
 GGCAGATGCCAAAAGTGCATCCCTGTGGTCTCACATCAAGGTTGAATCACACATACAGCCAAGCTTA  
 AACCAAGAGGACATTTACATCACACAGAAAGCCTTACCCTGCTGCTGGGAGGCCTGGGACAGGAGAAC  
 ATGTTCCAGGTTCTGAGATGCCTGTCCCAGACTATACCTCCATTATAGTACAGTCCCACAGGGCCT  
 CATACTCAATGCGACTGCCTTGCCTTGCTGACAAAGAGTTTCTCTCATCATGTGGCTATGTGAGCACA  
 GACCAACTGAACAAAATCATGCCT

ACGCGTACGCGGCCGCTCGAG - GFP Tag - GTTTAA

**Protein Sequence:**

>RG233036 representing NM\_001242401  
 Red=Cloning site Green=Tags(s)

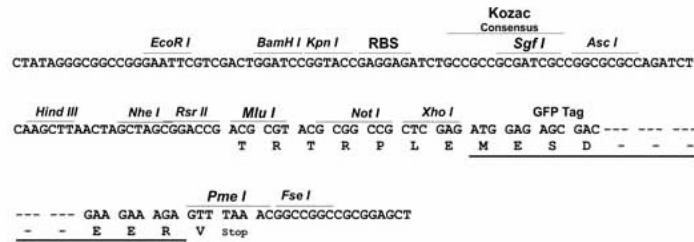
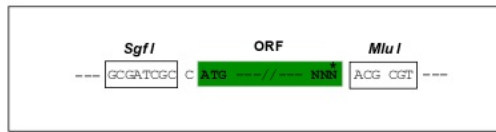
MDLWQLLLTLALAGSSDAFSGSEATAAILSRAPWSLQSVNPLKTNSSKEPKFTKCRSPERETF SCHWTD  
 EVHHGTKNLGPIQLFYTRRNTQEWTEWKECPDYVSAGENSICYFNSSFTSIWIPYCIKLT SNGGTVDEKC  
 FSVDEIVQPDPPIALNWTLLNVSLTGIHADIQVRWEAPRNADIQKGMVLEYELQYKEVNETKWKMMMPI  
 LTT SVPVYSLKVDKEYEVRVRSKQRNSGNYGEFSEVLVYVTL PQMSQFTCEEDFYFPWLLIIIFGIFGLTV  
 MLFVFLFSKQRIKMLILPPVPVKIKGIDPDLLKEGKLEEVNTILAIHDSYKPEFHSDDSWVEF IELDI  
 DEPDEKTEESDTRLLSSDHEKSHSNLGVKDGDSGRTSCEPDILETDFNANDIHEGTSEVAQPQRKGE  
 ADLLCLDQKNQNNSPYHDACPATQQPSVIAEKPKQPLPTEGAESTHQAHIQLSNPSSL SNIDFYAQV  
 SDITPAGSVVLSPGQKNKAGMSQCDMHPMVSLCQENFLMDNAYFCEADAKKICIPVAPHIKVESHIQPSL  
 NQEDIYITTESLTTAAGRPGTGEHVPVGPSEMPVPDYTSIHIVQSPQGLILNATALPLPDEKFLSSCGYVST  
 DQLNKIMP

TRTRPLE - GFP Tag - V

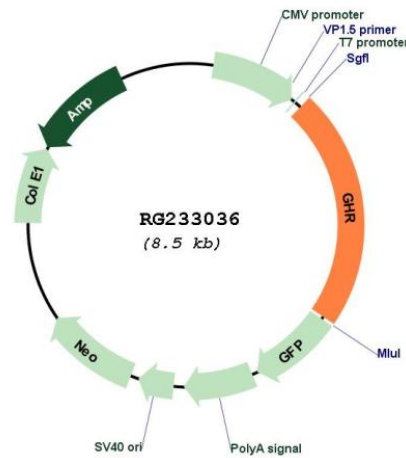
Restriction Sites: SgfI-MluI

Cloning Scheme:

Cloning sites used for ORF Shuttling:



Plasmid Map:



ACCN: NM\_001242401

ORF Size: 1914 bp

**OTI Disclaimer:** Due to the inherent nature of this plasmid, standard methods to replicate additional amounts of DNA in E. coli are highly likely to result in mutations and/or rearrangements. Therefore, OriGene does not guarantee the capability to replicate this plasmid DNA. Additional amounts of DNA can be purchased from OriGene with batch-specific, full-sequence verification at a reduced cost. Please contact our customer care team at [custsupport@origene.com](mailto:custsupport@origene.com) or by calling 301.340.3188 option 3 for pricing and delivery.

The molecular sequence of this clone aligns with the gene accession number as a point of reference only. However, individual transcript sequences of the same gene can differ through naturally occurring variations (e.g. polymorphisms), each with its own valid existence. This clone is substantially in agreement with the reference, but a complete review of all prevailing variants is recommended prior to use. [More info](#)

**OTI Annotation:** This clone was engineered to express the complete ORF with an expression tag. Expression varies depending on the nature of the gene.

**Components:** The ORF clone is ion-exchange column purified and shipped in a 2D barcoded Matrix tube containing 10ug of transfection-ready, dried plasmid DNA (reconstitute with 100 ul of water).

**Reconstitution Method:**

1. Centrifuge at 5,000xg for 5min.
2. Carefully open the tube and add 100ul of sterile water to dissolve the DNA.
3. Close the tube and incubate for 10 minutes at room temperature.
4. Briefly vortex the tube and then do a quick spin (less than 5000xg) to concentrate the liquid at the bottom.
5. Store the suspended plasmid at -20°C. The DNA is stable for at least one year from date of shipping when stored at -20°C.

**RefSeq:** [NM\\_001242401.4](#)

**RefSeq Size:** 4522 bp

**RefSeq ORF:** 1917 bp

**Locus ID:** 2690

**UniProt ID:** [P10912](#)

**Cytogenetics:** 5p13.1-p12

**Protein Families:** Druggable Genome, Transmembrane

**Protein Pathways:** Cytokine-cytokine receptor interaction, Jak-STAT signaling pathway, Neuroactive ligand-receptor interaction

**Gene Summary:**

This gene encodes a member of the type I cytokine receptor family, which is a transmembrane receptor for growth hormone. Binding of growth hormone to the receptor leads to receptor dimerization and the activation of an intra- and intercellular signal transduction pathway leading to growth. Mutations in this gene have been associated with Laron syndrome, also known as the growth hormone insensitivity syndrome (GHIS), a disorder characterized by short stature. In humans and rabbits, but not rodents, growth hormone binding protein (GHBP) is generated by proteolytic cleavage of the extracellular ligand-binding domain from the mature growth hormone receptor protein. Multiple alternatively spliced transcript variants have been found for this gene.[provided by RefSeq, Jun 2011]