

## Product datasheet for **RG233033**

### **PDE1C (NM\_001191056) Human Tagged ORF Clone**

#### **Product data:**

Product Type:	Expression Plasmids
Product Name:	PDE1C (NM_001191056) Human Tagged ORF Clone
Tag:	TurboGFP
Symbol:	PDE1C
Synonyms:	cam-PDE 1C; DFNA74; hCam-3; Hcam3
Mammalian Cell Selection:	Neomycin
Vector:	pCMV6-AC-GFP (PS100010)
E. coli Selection:	Ampicillin (100 ug/mL)



[View online »](#)

**ORF Nucleotide Sequence:**

>RG233033 representing NM\_001191056  
 Red=Cloning site Blue=ORF Green=Tags(s)

TTTTGTAATACGACTCACTATAGGGCGGCCGGAATTCGTCGACTGGATCCGGTACCGAGGAGATCTGCC  
 GCC**CGCATCGCC**

ATGGAGTCGCCAACCAAGGAGATTGAAGAATTTGAGAGCAACTCTCTGAAATACCTGCAACCCGGAACAGA  
 TCGAGAAAATCTGGCTTCGGCTCCGCGGCTGAGGAAATAAAGAAAACGTCCCAGAGATTACGGTCTTT  
 GGTCAAACAATTAGAGAGAGGGGAAGCTTCAGTGGTAGATCTTAAGAAAGATTTGGAATATGCAGCCACA  
 GTGCTTGAATCTGTGTATTGATGAAACAAGGAGACTCCTGGATACAGAGGATGAGCTCAGTGACATTC  
 AGTCAGATGCTGTGCCTTCTGAGGTCCGAGACTGGCTGGCTCCACCTTCACGCGGCAGATGGGGATGAT  
 GCTCAGGAGGAGCGACGAGAAGCCCGTTCAAGAGCATCGTTCACGCAGTGCAGGCTGGGATATTTGTG  
 GAGAGAATGTATAGACGGACATCAAACATGGTTGGACTGAGCTATCCACCAGCTGTTATTGAGGCATTAA  
 AGGATGTGGACAAGTGGTCTTTGACGCTTTTTCCCTCAATGAGGCCAGTGGGGATCATGCACTGAAATT  
 TATTTTCTATGAACTACTCACACGTTATGATCTGATCAGCCGTTTCAAGATCCCCATTTCTGCATTGTG  
 TCAATTTGTGGAGGCCCTGGAAGTGGGATACAGCAAGCACAAAAATCCTTACCATAACTTAATGCACGCTG  
 CCGATGTTACACAGACAGTGCATTACCTCCTCTATAAGACAGGAGTGGCGAACTGGCTGACGGAGCTGGA  
 GATCTTTGCTATAATCTTCTCAGCTGCCATCCATGACTACGAGCATACCGGAACCAACAATTTCCAC  
 ATTCAGACTCGGTCTGATCCAGCTATTCTGTATAATGACAGATCTGACTGGAGAATCACCATTTAAGTG  
 CAGCTTATCGCCTTCTGCAAGATGACGAGGAAATGAATATTTTGATTAACCTCTCAAAGGATGACTGGAG  
 GGAGTTTCAACCTTGGTAATTGAAATGGTGATGGCCACAGATATGTCTTGTCACTTCCAACAAATCAA  
 GCAATGAAGACTGCTCTGCAGCAGCCAGAAGCCATTGAAAAGCCAAAAGCCTTATCCCTTATGCTGCATA  
 CAGCAGATATTAGCCATCCAGCAAAAAGCATGGGACCTCCATCATCGCTGGACAATGCACCTGGAGGA  
 GTTCTTCAGACAGGGTGACAGAGAAGCAGAGCTGGGGCTGCCTTTTTCTCCTCTGTGTGACCGAAAAGTCC  
 ACTATGGTTGCTCAGTCAACAAGTAGGTTTCATTGATTTTCATCGTGAACCCACCTTCACTGTGCTTACGG  
 ACATGACCGAGAAGATTGTGAGTCCATTAATCGATGAAACCTCTCAAACCTGGTGGGACAGGACAGAGGCG  
 TTCGAGTTTGAATAGCATCAGCTCGTCAGATGCCAAGCGATCAGGTGTCAAGACCTCTGGTTCAGAGGGA  
 AGTGCCCCGATCAACAATCTGTCTCCGTTGACTATAAGAGCTTTAAAGCTACTTGGACGGAAGTGG  
 TGCACATCAATCGGGAGAGATGGAGGGCAAGGTACCCAAAGAGGAGAAGGCCAAGAAGGAAGCAGAGGA  
 AAAGGCTCGCCTGGCCGAGAGGAGCAGCAAAAAGGAAATGGAAGCCAAAAGCCAGGCTGAAGAAGGCGCA  
 TCTGGCAAAGCTGAGAAAAGACGCTCTGGAGAACTAAGAATCAAGTCAATGGAACACGGGCAAACAAA  
 GTGACAACCCCTGTGGGAAAACTCCAAAGCCGAGAAGTCATCAGGAGAACAGCAACAGAATGGTGA  
 CAAAGATGGTAAAAATAAGACAGACAAGAAGGATCACTCTAACATCGGAAATGATTCAAAGAAAACAGAT  
 GATTCACAAGAG

**ACGCGT**ACGCGGCCGCTCGAG – GFP Tag – GTTTAA

**Protein Sequence:**

>RG233033 representing NM\_001191056  
 Red=Cloning site Green=Tags(s)

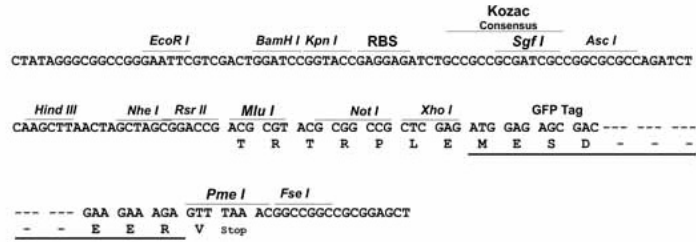
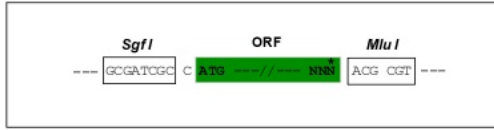
MESPTKEIEEFESNSLKYLPQEIQEIKIWLRLRGLRKYKKSQRLRSLVKQLERGEASVVDLKKNLEYAAT  
 VLESVYIDETRRLLDTEDELSDIQSDAVPSEVRDWLASTFTRQMGMLRRSDEKPRFKSIVHAVQAGIFV  
 ERMYYRRTSNMVGLSYPPAVIEALKDVKWSFDVFSLNEASGDHALKFIYELLTRYDLISRFKIPISALV  
 SFVEALEVGYSHKKNPYHNLMAADVTQTVHYLLYKTGVANWLTELEIFAIIFSAAIHDYEHTGTTNMFH  
 IQTRSDPAILYNDRSVLENHHL SAAAYRLLQDDEEMNIL INL SKDDWREFRTLVIEMVMATDMSCHFQQIK  
 AMKTALQPEAIEKPKALSLMLHTADISHPAKAWDLHHRWTMSLLEEFFRQGDREAEGLPFSPLCDRKS  
 TMVAQSQVGFIDFIVEPTFTVL TDMTEKIVSPLIDETSQTGGTGQRRSSLNSISSDAKRSGVKTSGSEG  
 SAPINNSVISVDYKSFKATWTEVVHINRERWRKVPKEEKAKKEAEEKARLAAEEQQKEMEAKSQAEEGA  
 SGKAEEKTSGETKNQVNGTRANKSDNPRGKNSKAEKSSGEQQQNGDFKDGKNKTDKDKHNSIGNDSKKT  
 DSQE

**TRTRPLE** – GFP Tag – V

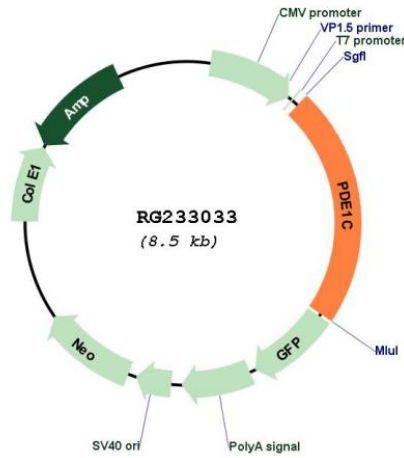
Restriction Sites: SgfI-MluI

Cloning Scheme:

Cloning sites used for ORF Shutting:



Plasmid Map:



ACCN: NM\_001191056

ORF Size: 1902 bp

<b>OTI Disclaimer:</b>	The molecular sequence of this clone aligns with the gene accession number as a point of reference only. However, individual transcript sequences of the same gene can differ through naturally occurring variations (e.g. polymorphisms), each with its own valid existence. This clone is substantially in agreement with the reference, but a complete review of all prevailing variants is recommended prior to use. <a href="#">More info</a>
<b>OTI Annotation:</b>	This clone was engineered to express the complete ORF with an expression tag. Expression varies depending on the nature of the gene.
<b>Components:</b>	The ORF clone is ion-exchange column purified and shipped in a 2D barcoded Matrix tube containing 10ug of transfection-ready, dried plasmid DNA (reconstitute with 100 ul of water).
<b>Reconstitution Method:</b>	<ol style="list-style-type: none"><li>1. Centrifuge at 5,000xg for 5min.</li><li>2. Carefully open the tube and add 100ul of sterile water to dissolve the DNA.</li><li>3. Close the tube and incubate for 10 minutes at room temperature.</li><li>4. Briefly vortex the tube and then do a quick spin (less than 5000xg) to concentrate the liquid at the bottom.</li><li>5. Store the suspended plasmid at -20°C. The DNA is stable for at least one year from date of shipping when stored at -20°C.</li></ol>
<b>RefSeq:</b>	<a href="#">NM_001191056.3</a>
<b>RefSeq Size:</b>	2979 bp
<b>RefSeq ORF:</b>	1905 bp
<b>Locus ID:</b>	5137
<b>UniProt ID:</b>	<a href="#">Q14123</a>
<b>Cytogenetics:</b>	7p14.3
<b>Protein Families:</b>	Druggable Genome
<b>Protein Pathways:</b>	Calcium signaling pathway, Olfactory transduction, Progesterone-mediated oocyte maturation, Purine metabolism
<b>Gene Summary:</b>	This gene encodes an enzyme that belongs to the 3'5'-cyclic nucleotide phosphodiesterase family. Members of this family catalyze hydrolysis of the cyclic nucleotides, cyclic adenosine monophosphate and cyclic guanosine monophosphate, to the corresponding nucleoside 5'-monophosphates. The enzyme encoded by this gene regulates proliferation and migration of vascular smooth muscle cells, and neointimal hyperplasia. This enzyme also plays a role in pathological vascular remodeling by regulating the stability of growth factor receptors, such as PDGF-receptor-beta. [provided by RefSeq, Jul 2016]