

## Product datasheet for **RG233030**

### **CUX1 (NM\_001202545) Human Tagged ORF Clone**

#### **Product data:**

Product Type:	Expression Plasmids
Product Name:	CUX1 (NM_001202545) Human Tagged ORF Clone
Tag:	TurboGFP
Symbol:	CUX1
Synonyms:	CASP; CDP; CDP/Cut; CDP1; Clox; COY1; CUTL1; CUX; Cux/CDP; GDDI; GOLIM6; Nbla10317; p75; p100; p110; p200
Mammalian Cell Selection:	Neomycin
Vector:	pCMV6-AC-GFP (PS100010)
E. coli Selection:	Ampicillin (100 ug/mL)



[View online »](#)

**ORF Nucleotide Sequence:**

>RG233030 representing NM\_001202545  
 Red=Cloning site Blue=ORF Green=Tags(s)

TTTTGTAATACGACTCACTATAGGGCGGCCGGAATTCGTCGACTGGATCCGGTACCGAGGAGATCTGCC  
 GCC**CGATCGCC**

ATGGCGCCAATGTGGGATCGATGTTTCAATATTGGAAGCGCTTTGATTTACAGCAGCTGCAGAGAGAAC  
 TCGATGCCACCGCAACGGTATTGGCGAACCGCAGGATGAAAGTGAAGCAGTCCAGAAAGCGGCTTATCGA  
 ACAGAGCCGGGAGTTCAAGAAGAACAACCTCCAGAGGATTTGCGCAAGCAGGTAGCGCCGCTGCTGAAGAGT  
 TTCCAAGGAGAGATTGATGCACTGAGTAAAAGAAGCAAGGAAGCTGAAGCAGCTTTCTTGAATGTCTACA  
 AAAGATTGATTGACGTCCAGAGGTTACGATAAAAGCACTTAAAGAGAAAATCCGAGAATATGAACAGAC  
 ACTGAAGAACCAAGCCGAAACCATAGCTCTTGAGAAGGAACAGAAAGTTACAGAATGACTTTGCAGAAAAG  
 GAGAGAAAGCTGCAGGAGACACAGATGTCCACCACCTCAAAGCTGGAGGAAGCTGAGCATAAGGTTCAGA  
 GCCTACAAACAGCCCTGGAAAAAAGCTCGAACAGAATTATTTGACCTGAAAACCAATACGATGAAGAAAC  
 TACTGCAAAGGCCGACGAGATTGAAATGATCATGACGGACCTTGAAGGGCAAACAGAGGGCAGAGGTG  
 GCTCAGAGAGAGGCGGAGACCTTAAGGGAACAGCTCTCATCGCCAATCACTCCCTCCAGCTGGCCCTCAC  
 AGATCCAGAAGGCCACAGACGTGGAGCAGGCCATAGAGGTGCTGACCCGCTCCAGCTAGAAGTTGAGTT  
 GGCCGCCAAGGAGCGGGAGATCGCACAGCTGGTGGAGGACGTGCAGAGACTCCAGGCCAGCTCACCAAG  
 CTGCGGGAGAATTCGGCCAGCCAGATCTCACAGCTTGAAGAGGTGAAGAAAGAGCTGAACATTCTGAA  
 GTCCATGGAGTTTGCACCGTCCGAGGGCGCTGGGACACAGGATGCGGCCAAGCCCTGGAGGTGCTGTTG  
 CTGGAGAAGAACCCTCGCTGCAGTCCGAGAACGCCGCGCTGCGCATCTCAACAGCGACCTGAGCGGAC  
 GCTGTGCGGAGCTGCAAGTCCGTATCACTGAGGCTGTGGCCACAGCCACTGAGCAGAGAGACTGATCGC  
 CCGCCTGGAGCAGGACCTGAGCATCATTAGTCCATCCAGCGGCCGATGCCGAGGGTGCCGCTGAGCAC  
 CGCCTGGAGAAGATCCCAGAGCCATCAAAGAGGCCACTGCCCTATTCTACGGACCTGCAGCACCAGCCA  
 GCGGTGCCCTCCCAGAGGGCCAGGTGGATTCACTGCTTTCCATCATCTCCAGCCAGAGGGAGCGCTCCG  
 TGCCCGGAACCAGGAGCTTGAAGCCGAGAACCGCTGGCCAGCACACCTCCAGGCCCTGCAGAGTGAG  
 CTGACAGCCTGCGCGCCGACAACATCAAGCTCTTTGAGAAGATCAAGTCTGAGAGCTACCTGGCC  
 GGGCAGCGGAGTATGACACGGAGCTGCGGTACTCGTCCAGTACGAGGAGCGCTGGACCCCTTCTC  
 CTCCTTACAGAACGGGAGCGGCAGAGGAAGTACCTGAGCTTGAAGTCCCTGGGACAAGGCCACCTCAGC  
 ATGGGGCTGTGTTCTCTCAACAAGATGGCGCGCACCATCGGCTTCTTCTACACTGTTCTGCACT  
 GCCTGGTCTTCTGGTGTCTACAAGCTGGCATGGAGCGAGAGCATGGAGAGGGACTGTGCCACCTCTG  
 CGCAAGAAGTTCGCTGACCACCTGCACAAGTTCACGAGAATGACAACGGGGCTGCGGCTGGTACTTG  
 TGGCAG

**ACGCGT**ACGCGGCCGCTCGAG - GFP Tag - GTTTAA

**Protein Sequence:**

>RG233030 representing NM\_001202545  
 Red=Cloning site Green=Tags(s)

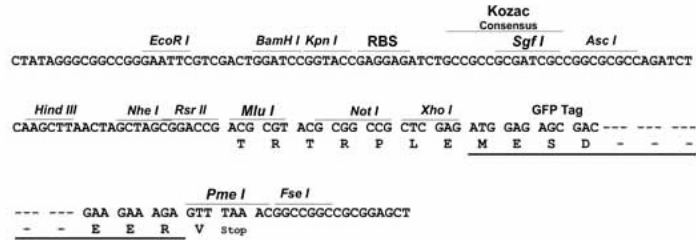
MAANVGSMFQYWKRFDLQQLQRELDATATVLANRQDESEQSRKRLIEQSREFKKNTPEDLRKQVAPLLKS  
 FQGEIDALSKRSKEAEEAFLNVYKRLIDVPEVTIKALKEKIREYEQTLKNQAETIALEKEQKLQNDFAEK  
 ERKLQETQMSTTSKLEEAHKVQSLQTALEKTRTELFDLKTKYDEETTAKADEIEMIMTDLERANQRAEV  
 AQREAETLREQLSSANHSLQLASQIQKAPDVEQATIEVLTRSSLEVELAAKEREIAQLVEDVQRLQASLTK  
 LRENSAQISQLEQQLSAKNSTLKLQLEEKLGQADYEEVKELNILKSMEFAPSEGAGTQDAKPLEVLL  
 LEKNRSLQSENAALRISNSDLGRCAELQVRITEAVATATEQREL IARLEQDL SIIQSIQRPDAEGAAEH  
 RLEKIPEPIKEATALFYGPAAPASGALPEGQVDSLLSIISSQRERFRARNQELEAENRLAQHTLQALQSE  
 LDSLRADNIKLFKIKFLQSYPRGSGSDDELRYSSQYEERLDPFSSF SKRERQRKYLSPWDKATLS  
 MGRLVLSNKMARTIGFFYTLFLHCLVFLVLYKLAWSESMERDCATFCAKKFADHLHKFHENDNGAAAGDL  
 WQ

**TRTRPLE** - GFP Tag - V

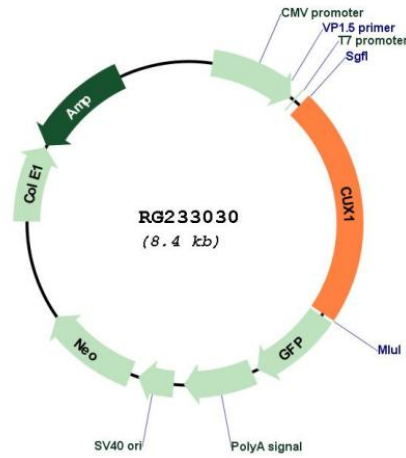
Restriction Sites: SgfI-MluI

Cloning Scheme:

Cloning sites used for ORF Shutting:



Plasmid Map:



ACCN: NM\_001202545

ORF Size: 1896 bp

<b>OTI Disclaimer:</b>	The molecular sequence of this clone aligns with the gene accession number as a point of reference only. However, individual transcript sequences of the same gene can differ through naturally occurring variations (e.g. polymorphisms), each with its own valid existence. This clone is substantially in agreement with the reference, but a complete review of all prevailing variants is recommended prior to use. <a href="#">More info</a>
<b>OTI Annotation:</b>	This clone was engineered to express the complete ORF with an expression tag. Expression varies depending on the nature of the gene.
<b>Components:</b>	The ORF clone is ion-exchange column purified and shipped in a 2D barcoded Matrix tube containing 10ug of transfection-ready, dried plasmid DNA (reconstitute with 100 ul of water).
<b>Reconstitution Method:</b>	<ol style="list-style-type: none"><li>1. Centrifuge at 5,000xg for 5min.</li><li>2. Carefully open the tube and add 100ul of sterile water to dissolve the DNA.</li><li>3. Close the tube and incubate for 10 minutes at room temperature.</li><li>4. Briefly vortex the tube and then do a quick spin (less than 5000xg) to concentrate the liquid at the bottom.</li><li>5. Store the suspended plasmid at -20°C. The DNA is stable for at least one year from date of shipping when stored at -20°C.</li></ol>
<b>RefSeq:</b>	<a href="#">NM_001202545.3</a>
<b>RefSeq Size:</b>	2901 bp
<b>RefSeq ORF:</b>	1899 bp
<b>Locus ID:</b>	1523
<b>UniProt ID:</b>	<a href="#">Q13948</a>
<b>Cytogenetics:</b>	7q22.1
<b>Protein Families:</b>	Transcription Factors, Transmembrane
<b>Gene Summary:</b>	The protein encoded by this gene is a member of the homeodomain family of DNA binding proteins. It may regulate gene expression, morphogenesis, and differentiation and it may also play a role in the cell cycle progression. Several alternatively spliced transcript variants encoding different isoforms have been identified.[provided by RefSeq, Feb 2011]