

Product datasheet for **RG233027**

Contactin 1 (CNTN1) (NM_001256064) Human Tagged ORF Clone

Product data:

Product Type:	Expression Plasmids
Product Name:	Contactin 1 (CNTN1) (NM_001256064) Human Tagged ORF Clone
Tag:	TurboGFP
Symbol:	CNTN1
Synonyms:	F3; GP135; MYPCN
Mammalian Cell Selection:	Neomycin
Vector:	pCMV6-AC-GFP (PS100010)
E. coli Selection:	Ampicillin (100 ug/mL)



[View online »](#)

ORF Nucleotide Sequence:

>RG233027 representing NM_001256064
 Red=Cloning site Blue=ORF Green=Tags(s)

TTTTGTAATACGACTCACTATAGGGCGGCCGGAATTCGTGACTGGATCCGGTACCGAGGAGATCTGCC
 GCC**GCGATCGCC**

ATGAAATGTGGTTGCTGGTCAGTCATCTTGTGATAATATCTATTACTACCTGTTTAGCAGAGTTTACAT
 GGTATAGAAGATATGGTCATGGAGTTTCTGAGGAAGACAAAGGATTTGGACCAATTTTGAAGAGCAGCC
 AATCAATACCATTATCCAGAGGAATCACTGGAAGGAAAAGTCTCACTCAACTGTAGGGCACGAGCCAGC
 CCTTCCCGGTTTACAAATGGAGAATGAATAATGGGGACGTTGATCTCACAAGTATCGATACAGTATGG
 TAGGAGGAAACCTTGTTATCAACAACCCTGACAAACAGAAAGTCTGGAATATACTACTGTTTAGCATC
 TAATACTACGGGATGGTCAGAAGCACTGAAGCAACCCTGAGCTTTGGATATCTTGATCCTTCCACCT
 GAGGAACGTCCTGAGGTCAGAGTAAAAGAAGGGAAAGGAATGGTGCTTCTGTGACCCCATACCATT
 TTCCAGATGATCTTAGCTATCGTGGCTTCTAAATGAATTTCTGTATTTATCACAATGGATAAACGGCG
 ATTTGTGTCTCAGACAAATGGCAATCTCTACATTGCAAAATGTTGAGGCTCCGACAAAGGCAATTATTCC
 TGCTTTGTTTCCAGTCTTCTATTACAAAGAGCGTGTTCCAGCAAATTCATCCCACTCATTCCAATACCTG
 AACGAACAACAAAACCATATCCTGCTGATATTGTAGTTCAGTTCAGGATGTATATGCATTGATGGGCCA
 AAATGTGACCTTAGAATGTTTGCACCTTGAAATCCTGTTCCGGATATCCGATGGCGGAAGGTTCTAGAA
 CCAATGCCAAGCACTGCTGAGATTAGCACCTCTGGGGCTGTTCTTAAGATCTTCAATATTCAGCTAGAAG
 ATGAAGGCATCTATGAATGTGAGGCTGAGAACATTAGAGGAAAGGATAAACATCAAGCAAGAATTTATGT
 TCAAGCATTCCCTGAGTGGGTAGAACACATCAATGACACAGAGGTGGACATAGGCAGTGATCTCTACTGG
 CCTTGTGTGGCCACAGGAAAGCCCATCCCTACAATCCGATGGTTGAAAAATGGATATCGTATCATAAAG
 GGAATTAAGACTGTATGATGTGACTTTTGAATAATGCGGAATGTATCAGTGCATAGTGAAAACACATA
 TGGAGCCATTTATGCAAAATGCTGAGTTGAAGATCTTGGCGTTGGCTCCAACCTTTTGAATGAATCCTATG
 AAGAAAAAGATCCTGGCTGCTAAAGGTGGAAGGTGATAATTGAATGCAACCTAAAGCTGCACCGAAAC
 CAAAGTTTTATGGAGTAAAGGGACAGAGTGGCTTGCAATAGCAGCAGAATACTCATTTGGGAAGATGG
 TAGCTTGAAATCAACAACATTACAAGGAATGATGGAGGTATCTATACATGCTTTGCAGAAAAATAACAGA
 GGGAAAGCTAATAGCACTGGAACCCTTGTATCACAGATCCTACGCGAATTATATTGGCCCCAATTAATG
 CCGATATCACAGTTGGAGAAAACGCCACCATGCAGTGTGCTGCGTCTTTGATCCTGCTTGATCTCAC
 ATTTGTTTGGTCCTTCAATGGCTATGTGATCGATTTTAAACAAGAGAATATTCCTACCAGAGGAATTTT
 ATGCTGGATTCCAATGGGAATTAATAATCCGAAATGCGCAGCTGAAACATGCTGGAAGATACACATGCA
 CTGCCACAGACAATTGTGGACAATTTCTCAGCTTACAGTACCTTGTAGTGAGAGGTAACAAACAGAAAAGG
 TGGAGAGAAAAACATGGTGGATTCTTTCTCCCGTCTGTGCAAGCCTGCCTCCAACCTGG

ACGCGTACGCGGCCGCTCGAG - GFP Tag - GTTTAA

Protein Sequence:

>RG233027 representing NM_001256064
 Red=Cloning site Green=Tags(s)

MKMWLLVSHLVIIISITTLAEFTWYRRYGHGVSEEDKGFPIFEEQPINTIYPEESLEGKVLNCRARAS
 PFPVYKWRMNGDVDLTSDRYSMVGGNLVINNPDKQKQDAGIYYCLASNNYGMVRSTEATLSFGYLDPFPP
 EERPEVRVKEGKGMVLLCDPPYHFPDDL SYRWLLNEFPVFITMDKRRFVSQTNGNLYIANVEASDKGNYS
 CFVSSPSITKSVFSKFIPLIPIPERTTKYPADIVVQFKDVYALMGQNVTLCECFALGNPVPDIRWRKYLE
 PMPSTAEISTSGAVLKIFNIQLEDEGIYECEAENIRGKDKHQARIYVQAFPEWVEHINDTEVDIGSDLYW
 PCVATGKPIPTIRWLKNGYAYHKGELRLYDVT FENAGMYQCI AENTYGA IYANAELKILALAPT FEMNPM
 KKKILAAGKGRVIECKPKAAPKPKFSWSKGTEWLVNSSRILIWEDGSLEINNITRNDGGIYTCFAENNR
 GKANSTGLVITDPTRILAPINADITVGENATMQCAASFDPALDLTFVVSFNGYVIDFNKENIHYQRNF
 MLDSNGELLIRNAQLKHAGRYTCTAQTIVDNSSASADLVVRGKNRKGGEKNMVD SFLPVCASLPPTW

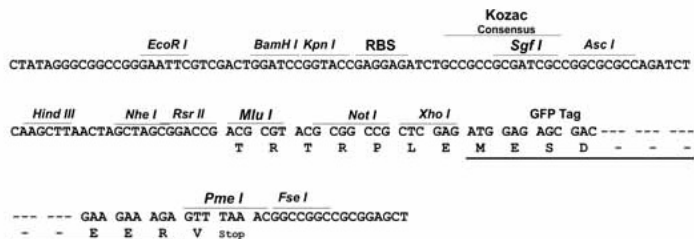
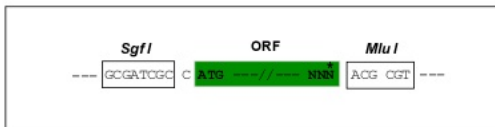
TRTRPLE - GFP Tag - V

Restriction Sites:

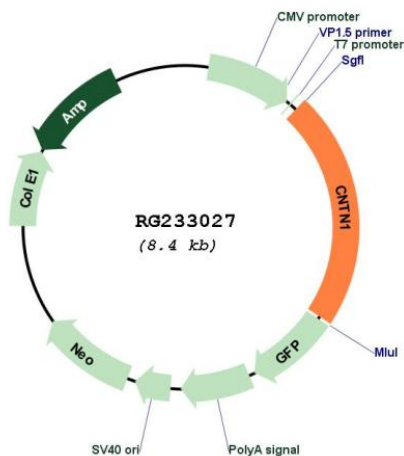
SgfI-MluI

Cloning Scheme:

Cloning sites used for ORF Shutting:



Plasmid Map:



ACCN: NM_001256064

ORF Size: 1881 bp

OTI Disclaimer:	The molecular sequence of this clone aligns with the gene accession number as a point of reference only. However, individual transcript sequences of the same gene can differ through naturally occurring variations (e.g. polymorphisms), each with its own valid existence. This clone is substantially in agreement with the reference, but a complete review of all prevailing variants is recommended prior to use. More info
OTI Annotation:	This clone was engineered to express the complete ORF with an expression tag. Expression varies depending on the nature of the gene.
Components:	The ORF clone is ion-exchange column purified and shipped in a 2D barcoded Matrix tube containing 10ug of transfection-ready, dried plasmid DNA (reconstitute with 100 ul of water).
Reconstitution Method:	<ol style="list-style-type: none"> 1. Centrifuge at 5,000xg for 5min. 2. Carefully open the tube and add 100ul of sterile water to dissolve the DNA. 3. Close the tube and incubate for 10 minutes at room temperature. 4. Briefly vortex the tube and then do a quick spin (less than 5000xg) to concentrate the liquid at the bottom. 5. Store the suspended plasmid at -20°C. The DNA is stable for at least one year from date of shipping when stored at -20°C.
RefSeq:	NM_001256064.1 , NP_001242993.1
RefSeq Size:	3528 bp
RefSeq ORF:	1884 bp
Locus ID:	1272
UniProt ID:	Q12860
Cytogenetics:	12q12
Protein Pathways:	Cell adhesion molecules (CAMs)
Gene Summary:	The protein encoded by this gene is a member of the immunoglobulin superfamily. It is a glycosylphosphatidylinositol (GPI)-anchored neuronal membrane protein that functions as a cell adhesion molecule. It may play a role in the formation of axon connections in the developing nervous system. Multiple alternatively spliced transcript variants encoding different isoforms have been found for this gene. [provided by RefSeq, Dec 2011]