

Product datasheet for **RG233005**

DIS3L2 (NM_001257281) Human Tagged ORF Clone

Product data:

Product Type:	Expression Plasmids
Product Name:	DIS3L2 (NM_001257281) Human Tagged ORF Clone
Tag:	TurboGFP
Symbol:	DIS3L2
Synonyms:	FAM6A; hDIS3L2; PRLMNS
Mammalian Cell Selection:	Neomycin
Vector:	pCMV6-AC-GFP (PS100010)
E. coli Selection:	Ampicillin (100 ug/mL)



[View online »](#)

ORF Nucleotide Sequence:

>RG233005 representing NM_001257281
 Red=Cloning site Blue=ORF Green=Tags(s)

TTTTGTAATACGACTCACTATAGGGCGGCCGGAATTCGTCGACTGGATCCGGTACCGAGGAGATCTGCC
 GCC**CGGATCGCC**

ATGAGCCATCCTGACTACAGAATGAACCTCCGGCCCTGGGGACCCAGAGGTGTGTCTGCTGTGGCTG
 GTCCACATGACATTGGTCTTCGCCAGGTGACAAAAAGTCAAAGAACAGGTCCACACGAGGGAAGAAAA
 GAGCATATTTGAACTTACATGTCCAAGGAGGATGTTTCAGAAGGCTTGAAGAGAGGAACACTCATCCAG
 GGTGTATTGAAATTAATCCAAAGAAGTTTCATGAAGCCTTCAATCCTTCCCGGATGGTATCGAGACA
 TTTTATTGATGGGGTTGTGCTCGTAATAGAGCCTTAAATGGGGATCTGGTGGTCTGAAACTGCTTCC
 CGAGGAGCATTGGAAGGTAGTTAAACCAGAGAGCAATGACAAAGAAACAGAAGCTGCGTATGAATCAGAT
 ATCCCGAGGAGCTCTGTGGACACCATCTCCGCAACAGTCCCTGAAAAGCTATAATGACAGTCTGATG
 TCATTGTAGAGGCTCAGTTTGTGGCAGCGACTCAGAAGATGGACATGGCATCACAAAAATGTGCTGGT
 TGATGGTGTAAAGAACTCTCAGTTTGTGTTTCTGAGAAAAGGAAGAGAGGATGGTATGCACCGGTTACA
 AAAGATGAGACCCTGCATTTACAAGACACAAGAGCTTTATCGGAGAAATCCCTGCAAAGATCAGCAA
 AGGTGGTTTACATCTTGGAGAAAAACATTCTCGAGCAGCAACCGGCTTCTCAAACCTTGGCTGATAA
 GAACAGCGAACTGTTTAGGAAATACGCCCTGTTTTCTCCCTCAGACCACCGAGTGCCTAGAAATTTATGTG
 CCTCTCAAGGACTGTCCCAGGACTTTGTGGCAGGCCTAAAGATTATGCCAACACACTGTTTATCTGCC
 GCATTGTGGACTGGAAGGAGGACTGCAATTTGCCCTGGGGCAGCTGGCTAAGAGTCTTGGGCAGGCTGG
 TGAATTGAGCCTGAAACAGAAGGAATACTAACAGAGTATGGCGTGGATTTCTCTGATTTCTTTCAGAA
 GTTCTAGAATGTCTTCAAGGCTGCCATGGACAATCCACCAGAGGAGTTTCCAGCAAGAGAAGGGATT
 TAAGAAAAGACTGTATCTTCAACATTGACCCATCAACCGCCGAGACCTCGATGATGCCCTCCTCGCAA
 GCCACTCGCTGACGGCAACTTCAAAGTGGGAGTTACATTGCTGACGTGAGTTACTTTGTTCCGGAGGGA
 TCTGATCTGGATAAAGTGGCTGCCGAGAGGGCTACAAGCGTCTACTTGGTTCAAAAGGTGGTCCCATGC
 TTCCAGGCTGCTGTGTGAGGAGCTGTGCAGCCTCAACCCATGTCCGACAAGCTGACCTTCTGTGAT
 CTGGACTGACTCCAGAGGGCAAGATCCTTGTGAATGGTTTGGCCGACCATCATCCGCTCCTGCACC
 AAATTAGCTACGAGCATGCACAGAGCATGATTGAAAGCCCAACTGAGAAAATCCCTGCGAAAGAGCTGC
 CCCCCATTTCCCAGAGCATAGCAGCGAGGAGGTACACCAGCAGAACGCAGACAAGGATGGGGCTGCCCA
 TCTTCAGGCTCTCACAGCCCTCTGCTGAAGATGCAGAAGCACGCCCTCCACAGAGGAACGCCTGCCT
 GAGACTCGGGCATATGTGACAGGGATCCAGACACAGACTGTTTTTCTTCCAGCAACAGAGCCGTGAT
 TGAAGCAAAGCCCCAAAACACGATAAGAGTAGAGGAGCAGACAACCCAGTTGCAGATT

ACGCGTACGCGGCCGCTCGAG - GFP Tag - GTTTAA

Protein Sequence:

>RG233005 representing NM_001257281
 Red=Cloning site Green=Tags(s)

MSHPDYRMNLRPLGTPRGVSAVAGPHDIGASPGDKSKNRSTRGKKKSI FETYMSKEDVSEGLKRGTLIQ
 GVLRLINPKKFHEAFIPSPDGDRIIDGVVARNRNLNGDLVVVKLLPEEHKVVVKPESNDKETEAAYESD
 IPEELCGHHLPPQQLKSYNDSPDIVVEAQFDGSDSEHGITQNVLDGVKLLSVCVSEKREDGDAPVT
 KDETTCISQDTRALSEKSLQRSKVVVYILEKKHSRAATGFLKLLADKNSLFRKYALFSPSDHRVPRIYV
 PLKDCPQDFVARPKDYANTLFCRIVDWKEDCNFALGQLAKSLGQAGEIEPETEGILTEYGVDFSDFSSE
 VLECLPQGLPWTIPPEEF SKRRDLRKDCIFTIDPSTARLDLDDAL SCKPLADGNFKVGVHIAVSYFVPEG
 SLDLKVAAERATSVYLVQKVVPMLPRLCEELCSLNPMSDKLTF SVIWLTPPEGILDEWFGRITIRISCT
 KLSYEAQSMIESPTEKIPAKELPPI SPEHSSEVHQQNADKDGAAHLQASHSPSAEDAEAPSTEERLP
 ETRGICDRDPDTRLFFLQQQSRVLEAKPQNTIRVEEQTTQLQI

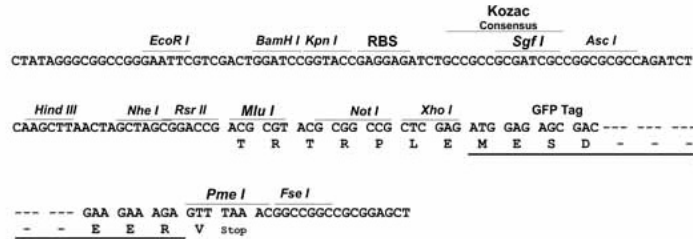
TRTRPLE - GFP Tag - V

Restriction Sites:

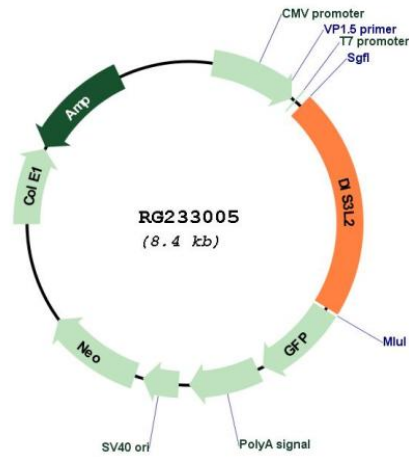
Sgfl-MluI

Cloning Scheme:

Cloning sites used for ORF Shuttling:



Plasmid Map:



ACCN: NM_001257281
 ORF Size: 1809 bp

OTI Disclaimer:	The molecular sequence of this clone aligns with the gene accession number as a point of reference only. However, individual transcript sequences of the same gene can differ through naturally occurring variations (e.g. polymorphisms), each with its own valid existence. This clone is substantially in agreement with the reference, but a complete review of all prevailing variants is recommended prior to use. More info
OTI Annotation:	This clone was engineered to express the complete ORF with an expression tag. Expression varies depending on the nature of the gene.
Components:	The ORF clone is ion-exchange column purified and shipped in a 2D barcoded Matrix tube containing 10ug of transfection-ready, dried plasmid DNA (reconstitute with 100 ul of water).
Reconstitution Method:	<ol style="list-style-type: none">1. Centrifuge at 5,000xg for 5min.2. Carefully open the tube and add 100ul of sterile water to dissolve the DNA.3. Close the tube and incubate for 10 minutes at room temperature.4. Briefly vortex the tube and then do a quick spin (less than 5000xg) to concentrate the liquid at the bottom.5. Store the suspended plasmid at -20°C. The DNA is stable for at least one year from date of shipping when stored at -20°C.
RefSeq:	NM_001257281.2
RefSeq Size:	2481 bp
RefSeq ORF:	1812 bp
Locus ID:	129563
UniProt ID:	Q8IYB7
Cytogenetics:	2q37.1
Gene Summary:	The protein encoded by this gene is similar in sequence to 3'/5' exonucleolytic subunits of the RNA exosome. The exosome is a large multimeric ribonucleotide complex responsible for degrading various RNA substrates. Several transcript variants, some protein-coding and some not, have been found for this gene. [provided by RefSeq, Mar 2012]