

Product datasheet for **RG233001**

TCF4 (NM_001243232) Human Tagged ORF Clone

Product data:

Product Type:	Expression Plasmids
Product Name:	TCF4 (NM_001243232) Human Tagged ORF Clone
Tag:	TurboGFP
Symbol:	TCF4
Synonyms:	bHLHb19; CDG2T; E2-2; FECD3; ITF-2; ITF2; PTHS; SEF-2; SEF2; SEF2-1; SEF2-1A; SEF2-1B; SEF2-1D; TCF-4
Mammalian Cell Selection:	Neomycin
Vector:	pCMV6-AC-GFP (PS100010)
E. coli Selection:	Ampicillin (100 ug/mL)



[View online >](#)

ORF Nucleotide Sequence:

>RG233001 representing NM_001243232
 Red=Cloning site Blue=ORF Green=Tags(s)

TTTTGTAATACGACTCACTATAGGGCGGCCGGAATTCGTCGACTGGATCCGGTACCGAGGAGATCTGCC
 GCC**GCGATCGCC**

ATGAAGGATATTTTTTCCAGTTTATCATAGCCAGAGTGAGGAAGTGTATTCCCTCTCTTGCTTGCCATA
 CATTGCCAGTAGTGCCTACTTTACGTAAAAACAGAAAGGGGCTCACTCATCTTATGGGAGAGAATCAAA
 CTTACAGGGTTGCCACCAGAGTCTCCTTGAGGTGACATGGATATGGGCAACCCAGGAACCTTTGCCCC
 ACCAAACCTGGTCCCAGTACTATCAGTATTCTAGCAATAATCCCCGAAGGAGGCCTCTTACAGTAGTG
 CCATGGAGGTACAGACAAAGAAAGTTCGAAAAGTTCCTCCAGGTTTGCCATCTTCACTATGCTCCATC
 AGCAAGCACTGCCGACTACAATAGGGACTCGCCAGGCTATCCTTCTCCAAACCAGCAACCAGCACTTTC
 CCTAGCTCCTTCTCATGCAAGATGGCCATCACAGCAGTGACCCTTGAGCTCCTCCAGTGGGATGAATC
 AGCCTGGCTATGCAGGAATGTTGGGCAACTCTTCTCATATCCACAGTCCAGCAGCTACTGTAGCCTGCA
 TCCACATGAACGTTTGGCTATCCATCACACTCCTCAGCAGACATCAATCCAGTCTTCTCCGATGTC
 ACTTTCCATCGTAGTGGTACAAACCATTACAGCACCTTCTCCTGTACGCCCTGCCAACGGGACAGACA
 GTATAATGGCAAATAGAGGAAGCGGGCAGCCGCGAGCTCCAGACTGGAGATGCTCTGGGAAAGCACT
 TGCTTCGATCTATTCTCCAGATCACACTAACAACAGCTTTTATCAAACCTTCAACTCCTGTTGGCTCT
 CCTCCATCTCTCAGCAGGCACAGCTGTTTGGTCTAGAAATGGAGGACAGGCCTCATCGTCTCCTAATT
 ATGAAGGACCTTACACTCTTTGCAAAGCCGAATTGAAGATCGTTTAGAAAGACTGGATGATGCTATTCA
 TGTTCTCCGAACCATGCAGTGGGCCATCCACAGCTATGCCTGGTGGTATGGGACATGCATGGAATC
 ATGGACCTTCTCATAATGGAGCCATGGTGGTCTGGGCTCAGGGTATGGAACCGGCCTTCTTTCAGCCA
 ACAGACATTCACATGCTGGTGGGACCCATCGTGAAGATGGCGTGGCCCTGAGAGGCAGCCATTCTTCT
 GCCAAACCAGGTTCCGGTCCACAGCTTCTGTCCAGTCTGCGACTTCCCCTGACCTGAACCCACCCAG
 GACCTTACAGAGGCATGCCACCAGGACTACAGGGCAGAGTGTCTCCTGTCGAGCTCTGAGATCAAAT
 CCGATGACGAGGGTATGAGAACCTGCAAGACACGAAATCTTCGAGGACAAGAAATTAGATGACGACAA
 GAAGGATATCAAATCAATTAAGTCAAGATCTAGCAATAATGACGATGAGGACCTGACACCAGAGCAG
 AAGGCAGAGCGTGAAGAGGAGCGGAGGATGGCCAAACATGCCGAGAGCGTCTGCGGGTCCGTGACATCA
 ACGAGGCTTCAAAGAGCTCGGCCGATGGTGCAGCTCCACCTCAAGAGTGAAGCCCCAGACCAAGCT
 CCTGATCTCCACCAGGCGGTGGCCGTCATCCTCAGTCTGGAGCAGCAAGTCCGAGAAAGGAATCTGAAT
 CCGAAAGCTGCGTGTCTGAAAAGAAGGGAGGAAGAGAAGGTGTCCTCAGAGCCTCCCCTCTCCTTGG
 CCGGCCACACCTGGAATGGGAGACGCATCGAATCACATGGGACAGATG

ACGCGTACGCGGCCGCTCGAG – GFP Tag – GTTTAA

Protein Sequence:

>RG233001 representing NM_001243232
 Red=Cloning site Green=Tags(s)

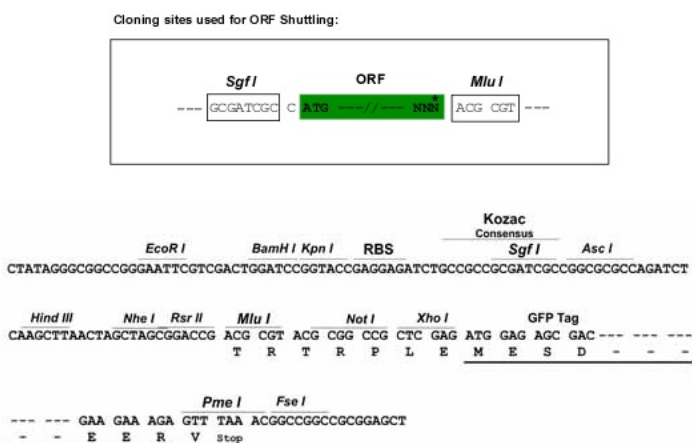
MKDIFFQFIIARVRKCYLSLHSLPVVPTLRKTERGSYSSYGRESNLQGCHQSLGGDMDMGNPGLSP
 TKPGSQYYQYSSNNPRRRPLHSSAMEVQTKKVRKVPVPLPSSVYAPSASTADYNRSPGYSSKPATSTF
 PSSFFMQDGHSSDPWSSSSGMNQPGYAGMLGNSSHIPQSSSYCSLHPHERLSYPSSHSSADINSSLPPMS
 TFHRSGTNHYSTSCTPPANGTDSIMANRGSAGSSQTGDALGKALASIYSPDHTNNSFSNPSTPVGS
 PPSL SAGTAVWSRNGGQASSSPNYEGPLHSLQSRIEDRLERLDDAIHVLRNHAVGPSTAMPGGHGMHGI
 IGPSHNGAMGGLGSGYGTGLLSANRHSMLVGTHTREDGVALRGSLSLLPNQVVPVQLPVQSATSPDLNPPQ
 DPYRGMPPGLQGQSVSSGSSEIKSDDEGDENLQDTKSSDKKLDKDKDIIKISITRSRSDNDEDLTPEQ
 KAEREKERRMANNARERLRVRDINEAFKELGRMVQLHLKSDKPQTKLLILHQAVAVILSLEQQVREERLN
 PKAACLKRREEEKVSSEPPPLSLAGPHPGMGDASNHMGMQ

TRTRPLE – GFP Tag – V

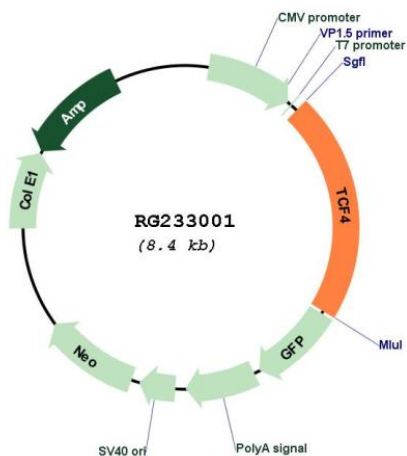
Restriction Sites:

Sgfl-MluI

Cloning Scheme:



Plasmid Map:



ACCN: NM_001243232

ORF Size: 1800 bp

OTI Disclaimer:	The molecular sequence of this clone aligns with the gene accession number as a point of reference only. However, individual transcript sequences of the same gene can differ through naturally occurring variations (e.g. polymorphisms), each with its own valid existence. This clone is substantially in agreement with the reference, but a complete review of all prevailing variants is recommended prior to use. More info
OTI Annotation:	This clone was engineered to express the complete ORF with an expression tag. Expression varies depending on the nature of the gene.
Components:	The ORF clone is ion-exchange column purified and shipped in a 2D barcoded Matrix tube containing 10ug of transfection-ready, dried plasmid DNA (reconstitute with 100 ul of water).
Reconstitution Method:	<ol style="list-style-type: none">1. Centrifuge at 5,000xg for 5min.2. Carefully open the tube and add 100ul of sterile water to dissolve the DNA.3. Close the tube and incubate for 10 minutes at room temperature.4. Briefly vortex the tube and then do a quick spin (less than 5000xg) to concentrate the liquid at the bottom.5. Store the suspended plasmid at -20°C. The DNA is stable for at least one year from date of shipping when stored at -20°C.
RefSeq:	NM_001243232.1 , NP_001230161.1
RefSeq Size:	7788 bp
RefSeq ORF:	1803 bp
Locus ID:	6925
UniProt ID:	P15884
Cytogenetics:	18q21.2
Protein Families:	Druggable Genome, ES Cell Differentiation/IPS, Transcription Factors
Gene Summary:	This gene encodes transcription factor 4, a basic helix-loop-helix transcription factor. The encoded protein recognizes an Ephrussi-box ('E-box') binding site ('CANNTG') - a motif first identified in immunoglobulin enhancers. This gene is broadly expressed, and may play an important role in nervous system development. Defects in this gene are a cause of Pitt-Hopkins syndrome. In addition, an intronic CTG repeat normally numbering 10-37 repeat units can expand to >50 repeat units and cause Fuchs endothelial corneal dystrophy. Multiple alternatively spliced transcript variants that encode different proteins have been described. [provided by RefSeq, Jul 2016]