

Product datasheet for **RG232989**

Beta TRCP (BTRC) (NM_001256856) Human Tagged ORF Clone

Product data:

| | |
|---------------------------|--|
| Product Type: | Expression Plasmids |
| Product Name: | Beta TRCP (BTRC) (NM_001256856) Human Tagged ORF Clone |
| Tag: | TurboGFP |
| Symbol: | BTRC |
| Synonyms: | BETA-TRCP; betaTrCP; bTrCP; bTrCP1; FBW1A; FBXW1; FBXW1A; FWD1 |
| Mammalian Cell Selection: | Neomycin |
| Vector: | pCMV6-AC-GFP (PS100010) |
| E. coli Selection: | Ampicillin (100 ug/mL) |



[View online »](#)

ORF Nucleotide Sequence:

>RG232989 representing NM_001256856
 Red=Cloning site Blue=ORF Green=Tags(s)

TTTTGTAATACGACTCACTATAGGGCGGCCGGAATTCGTCGACTGGATCCGGTACCGAGGAGATCTGCC
 GCC**CGGATCGCC**

ATGGACCCGGCCGAGCGGTGCTGCAAGAGAAGGCACTCAAGTTATGTGCTCTATGCCAGGTCTCTGT
 GGCTGGGCTGCTCCAGCCTGGCGGACAGCATGCCTTCGCTGCGATGCCTGTATAAACCAGGACTGGCGC
 ACTCACAGCTTTCCAGACATACAACAGCTGTGCCAGACTCTGCTTAAACCAAGAAACAGTATGTTTAGCA
 AGCACTGCTATGAAGACTGAGAATTGTGTGGCCAAAACAAAACCTGCCAATGGCACTTCCAGTATGATTG
 TGCCCAAGCAACGGAACTCTCAGCAAGCTATGAAAAGGAAAAGGAACTGTGTGCAAACTTTGAGCA
 GTGGTCAGAGTCAGATCAAGTGGAAATTTGTGGAACATCTTATATCCCAAATGTGTCATTACCAACATGGG
 CACATAAACTCGTATCTTAAACCTATGTTGCAGAGAGATTTCACTAACTGCTCTGCCAGCTCGGGATTGG
 ATCATATTGCTGAGAACATTCTGTACACTGGATGCCAATCACTATGTGCTGCTGAACCTGTGTGCAA
 GGATGGTACCGAGTGACCTCTGATGGCATGCTGTGGAAGAAGCTTATCGAGAGAATGGTCAGGACAGAT
 TCTCTGTGGAGAGGCCTGGCAGAACGAAGAGGATGGGGACAGATTTTATTCAAAAACAAACCTCCTGACC
 GGAATGCTCCTCCAACCTTTTTATAGAGCACTTTATCCTAAAATTATACAAGACATTGAGACAATAGA
 ATCTAATTGGAGATGTGGAAGACATAGTTTACAGAGAATCACTGCCGAAGTGAACAAGCAAAGGAGTT
 TACTGTTTACAGTATGATGATCAGAAAATAGTAAGCGGCCTTCGAGACAACAATCAAGATCTGGGATA
 AAAACACATTGGAATGCAAGCGAATTCACAGGCCATACAGGTTCACTCCTCTGTCTCCAGTATGATGA
 GAGAGTGATCATAACAGGATCATCGGATCCACGGTCAGAGTGTGGGATGAAAATACAGGTGAAATGCTA
 AACACGTTGATTCACCATTGTGAAGCAGTCTGCACCTTGCCTTCAATAATGGCATGATGGTGACCTGCT
 CCAAAGATCGTTCCATTGCTGTATGGGATATGGCCTCCCAACGACATTACCCTCCGAGGGGTGCTGGT
 CGGACACCGAGCTGCTGCAATGTTGTAGACTTTGATGACAAGTACATTGTTTCTGCATCTGGGGATAGA
 ACTATAAAGGTATGGAACACAAGTACTTGTGAATTTGTAAAGACCTTAAATGGACACAAACGAGGCATTG
 CCTGTTTGCAGTACAGGGACAGGCTGGTAGTGAGTGGCTCATCTGACAACACTATCAGATTATGGGACAT
 AGAATGTGGTGCATGTTTACGAGTGTAGAAAGCCATGAGGAATGGTGCCTTGTATTGATTTGATAAC
 AAGAGGATAGTCAGTGGGCCTATGATGGAAAATTAAGTGTGGGATCTGTGGCTGCTTTGGACCCCC
 GTGCTCCTGCAGGACACTCTGTCTACGGACCCTTGTGGAGCATTCCGGAAGAGTTTTTCGACTACAGTT
 TGATGAATCCAGATTGCAGTAGTTCACATGATGACACAATCCTCATCTGGGACTTCTAAATGATCCA
 GCTGCCAAGCTGAACCCCCCGTCCCTTCTCGAACATACACCTACATCTCCAGA

ACGCGTACGCGGCCGCTCGAG – GFP Tag – GTTTAA

Protein Sequence:

>RG232989 representing NM_001256856
 Red=Cloning site Green=Tags(s)

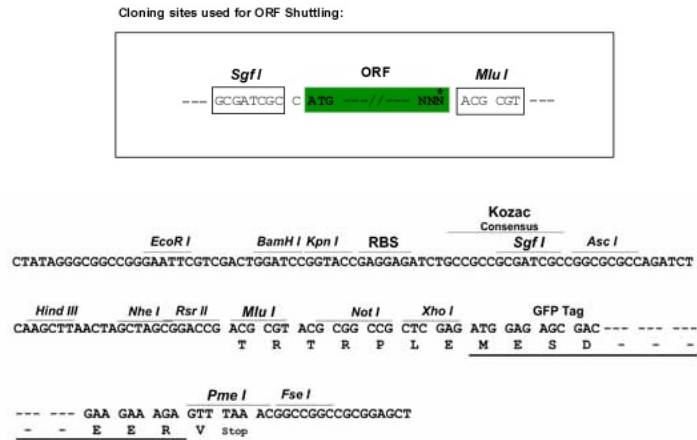
MDPAEAVLQEKALKFMCSPRSLWLGCSLADSMPSLRCLYNPGTGALTAFQTYNSCARLCLNQETVCLA
 STAMKTENCVAKTKLANTSSMIVPKQRKLSASYEKEKELCVKYFEQWSESDQVEFVEHLISQMCHYQHG
 HINSYLKPLQRDFITALPARGLDHAENILSYLDAKSLCAAELVCKEYRVTS DGM LWKLIERMVRTD
 SLWRGLAERRGWQYLFKNKPPDGNAPPNSFYRALYPKIIQDIETIESNWRGRHSLQRIHCRSETSKGV
 YCLQYDDQKIVSGLRDNTIKIWDKNTLECKRILTGHTGSVLCQYDERVIITGSSDSTVRVVDVNTGEML
 NTLIHHCEAVLHLRFNNGMMVTCSKDRSIAVWDMASPTDITLRRVLVGHRAAVNVVDFDDKYIVSASGDR
 TIKVWNTSTCEFVRTLNHGKRGIAQLQYRDRLVVS GSSDNTIRLWDIECGACLRVLEGEHELVR CIRFDN
 KRIVSGAYDGKIKVWDLVAALDPRAPAGTLCRLTVEHSGRVFRLQFDEFQIVSSSHDDTILIWDFLNDP
 AAQAEPPRSPSRITYTISR

TRTRPLE – GFP Tag – V

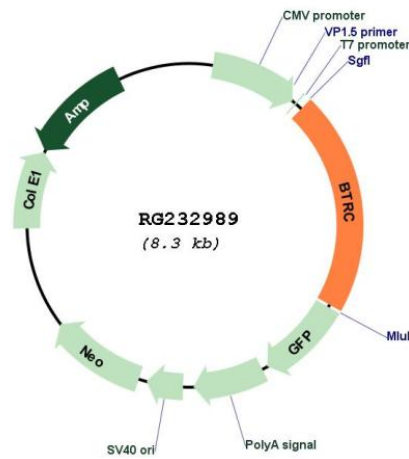
Restriction Sites:

Sgfl-MluI

Cloning Scheme:



Plasmid Map:



ACCN: NM_001256856

ORF Size: 1737 bp

| | |
|-------------------------------|--|
| OTI Disclaimer: | The molecular sequence of this clone aligns with the gene accession number as a point of reference only. However, individual transcript sequences of the same gene can differ through naturally occurring variations (e.g. polymorphisms), each with its own valid existence. This clone is substantially in agreement with the reference, but a complete review of all prevailing variants is recommended prior to use. More info |
| OTI Annotation: | This clone was engineered to express the complete ORF with an expression tag. Expression varies depending on the nature of the gene. |
| Components: | The ORF clone is ion-exchange column purified and shipped in a 2D barcoded Matrix tube containing 10ug of transfection-ready, dried plasmid DNA (reconstitute with 100 ul of water). |
| Reconstitution Method: | <ol style="list-style-type: none">1. Centrifuge at 5,000xg for 5min.2. Carefully open the tube and add 100ul of sterile water to dissolve the DNA.3. Close the tube and incubate for 10 minutes at room temperature.4. Briefly vortex the tube and then do a quick spin (less than 5000xg) to concentrate the liquid at the bottom.5. Store the suspended plasmid at -20°C. The DNA is stable for at least one year from date of shipping when stored at -20°C. |
| RefSeq: | NM_001256856.1 , NP_001243785.1 |
| RefSeq Size: | 6102 bp |
| RefSeq ORF: | 1740 bp |
| Locus ID: | 8945 |
| Cytogenetics: | 10q24.32 |
| Protein Families: | Druggable Genome |
| Protein Pathways: | Hedgehog signaling pathway, Oocyte meiosis, Ubiquitin mediated proteolysis, Wnt signaling pathway |
| Gene Summary: | This gene encodes a member of the F-box protein family which is characterized by an approximately 40 amino acid motif, the F-box. The F-box proteins constitute one of the four subunits of ubiquitin protein ligase complex called SCFs (SKP1-cullin-F-box), which function in phosphorylation-dependent ubiquitination. The F-box proteins are divided into 3 classes: Fbws containing WD-40 domains, Fbls containing leucine-rich repeats, and Fbxs containing either different protein-protein interaction modules or no recognizable motifs. The protein encoded by this gene belongs to the Fbws class; in addition to an F-box, this protein contains multiple WD-40 repeats. The encoded protein mediates degradation of CD4 via its interaction with HIV-1 Vpu. It has also been shown to ubiquitinate phosphorylated NFKBIA (nuclear factor of kappa light polypeptide gene enhancer in B-cells inhibitor, alpha), targeting it for degradation and thus activating nuclear factor kappa-B. Alternatively spliced transcript variants have been described. A related pseudogene exists in chromosome 6. [provided by RefSeq, Mar 2012] |