

## Product datasheet for **RG232988**

### **C1orf25 (TRMT1L) (NM\_001202423) Human Tagged ORF Clone**

#### **Product data:**

Product Type:	Expression Plasmids
Product Name:	C1orf25 (TRMT1L) (NM_001202423) Human Tagged ORF Clone
Tag:	TurboGFP
Symbol:	TRMT1L
Synonyms:	bG120K12.3; C1orf25; MST070; MSTP070; TRM1L
Mammalian Cell Selection:	Neomycin
Vector:	pCMV6-AC-GFP (PS100010)
E. coli Selection:	Ampicillin (100 ug/mL)



[View online »](#)

**ORF Nucleotide Sequence:**

>RG232988 representing NM\_001202423  
 Red=Cloning site Blue=ORF Green=Tags(s)

TTTTGTAATACGACTCACTATAGGGCGGCCGGAATTCGTCGACTGGATCCGGTACCGAGGAGATCTGCC  
 GCC**CGGATCGCC**

ATGTGCATCTGTCACTTACCTTGTGCGACCAGTGAACCAACATTATTGGAGAACAGATAACCAGTAAAA  
 TGGGAGCCCATTCATTGTATCATTGTTCAGCAACAATCACCAGAAGAACTGATATGCTAGGACATGT  
 TAGGCGCCACATGAATAAAGGAGAGACTAAATCTAGTTATATTGCAGCTTCCACTGCTAAACCACCTAAG  
 GAAATTTTGAAGAGGCAGACACGGATGTACAAGTTTGTCCCACTATTCTATACCTCAGAAAACAGATT  
 CCTATTTAAACCCAAAAATGAACTAAATCGGCAGCTAATATTCTGTACATTGGCTGCTTTGGCTGAGGA  
 ACGAAAACCTTTGGAATGTCTAGATGCTTTTGGAGCCACTGGGATAATGGGATTACAGTGGGCAAAACAT  
 CTTGGAATGCAGTCAAAGTTACAATCAATGACTTGAATGAAAATCTGTGACACTGATTCAGGAAAAC  
 GCCATTTAAACAAATTGAAAGTGGTGGTGGACAGTAAGGAAAAGGAAAAGAGTGATGATATTCTTGAAGA  
 AGGAGAGAAAAATCTTGTAATATTAAGGTGACCAAAATGGATGCCAATGTACTGATGCATTTGAGATCT  
 TTTGATTTTCATACATCTAGACCCTTTTGGAACATCAGTGAATTATCTAGATTCTGCATTCAGAAAATAA  
 GAAACCTTGGCATAAGTGTGAGTCTTCTACAGATATCAGTTCTTTATATGCCAAGGCACAGCATGTTGC  
 CCGGCGTCACTACGGATGTAACATTGTCCGAACTGAATATTACAAGAACTAGCAGCCAGAATTGTTGTA  
 GCTGCAGTGGCAAGAGCTGCAGCCCGATGCAACAAGGCATAGAAGTACTGTTTGCAGTGGCTCTGGAAC  
 ATTTTGTGTTGGTAGTTGTGAGAGTTTTGAGGGGACCTACTTCAGCAGATGAAACAGCCAAGAAGATTCA  
 ATACCTGATCCATTGTCAGTGGTGTGAAGAGAGAAATTTTCAAGAGGATGGTAATATGGTAGAAGAAAAC  
 CCATATAGACAGCTGCCTTGTAACTGTCATGGAAGCATGCCTGGAAGACAGCAATAGAATCTTCCAGCTC  
 TGTGGTCAAGTTCCCTTTTCAACTACTGGATTCTCAAAGAATGCTATTTGAATCTTCCAGTGGTTT  
 GGATGACATTCAGACCCTAATAAAGACATTAATCTTTGAATCAGAGTGTACGCCTCAAAGTCAGTTTCA  
 ATTCATGCATCTTCAAATGTCAACAAGCAAGAAGAAAATGGTGTATTTATTAATACTACAGATGACACCA  
 CAACAGATAATTACATTGCACAAGGAAAGAGAAAAAGTAAATGAAATGATCACAATTTAGGCAAGAAGCA  
 AAAGACTGATGTCAGTACTGAACATCCTCCCTTTTATTACAACATTCACAGACACAGCATTAAAGGAATG  
 AATATGCCAAAGTAAAAAGTTTTTGTGCTATTTATCTCAAGCAGGCTTTGAGTAAGCCGAACTCATT  
 TTGACCAATGGGTGTACGCACAGATGCACCTCTGATGCAGTTTAAATCTATCCTTTTAAAGTACAGCAC  
 CCCCACCTACACTGGAGGACAGTCAGAAAGCCATGTCCAGTCAGCATCTGAAGATACAGTAACTGAAAGA  
 GTTGAAATGTCAGTGAATGACAAAGCAGAAGCAAGTGGCTGCAGAAGATGG

**ACGCGTACGCGGCCGCTCGAG** – GFP Tag – GTTTAA

**Protein Sequence:**

>RG232988 representing NM\_001202423  
 Red=Cloning site Green=Tags(s)

MCICHLPCRVPKPNIIIGEQITSKMGAHYHCIICSATITRRTDMLGHVRRHMNKGETKSSYIAASTAKPPK  
 EILKEADTDVQVCPNYSIPQKTDSYFNPKMKNRQLIFCTLAALAEERKPLECLDAFGATGIMGLQWAKH  
 LGNAVKVTINDLNENSVTLIQENCHLNKLVVVDSSKEKEKSDDILEEKGNLGNIKVTKMDANVLMHLRS  
 FDFIHLDPFGTSVNYLDSAFRNIRNLGIVSVTSDISSLYAKAQHVARRHYGCNIVRTEYKELAAARIVV  
 AAVARAAAARCNGIEVLFVALEHFVLVVVRVLRGPTSADEAKKIQYL IHCQWCEERIFQKDGNMVEEN  
 PYRQLPCNCHGSMGKTAIELGPLWSSSLFNTGFLKRMLFESLHHGLDDIQTLIKTLIFESECTPQSQFS  
 IHASSNVNKQEENGVFIKTTDDTTTNDNYIAQGRKSNEMIINLGGKQKTDVSTEHPFFYYNIHRHSIKGM  
 NMPKLLKFLCYLSQAGFRVSRTHFDPMGVRTDAPLMQFKSILLKYSTPTTYTGGQSESHVQSASEDTVTER  
 VEMSVNDKAEASGCRRW

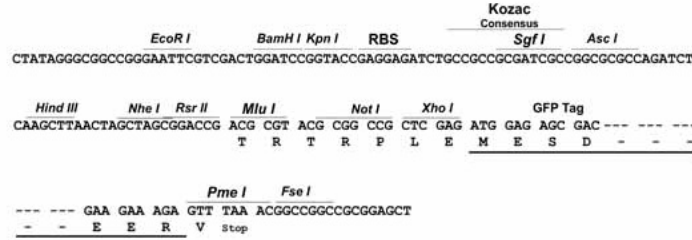
**TRTRPLE** – GFP Tag – V

**Restriction Sites:**

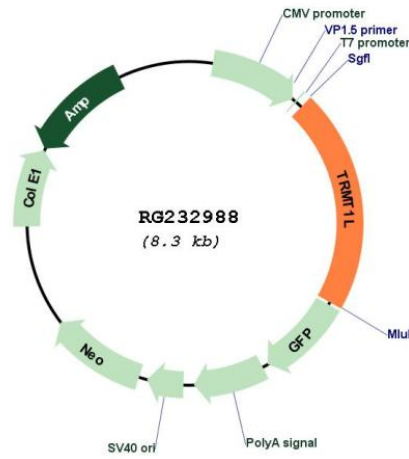
Sgfl-MluI

Cloning Scheme:

Cloning sites used for ORF Shutting:



Plasmid Map:



ACCN: NM\_001202423  
 ORF Size: 1731 bp

<b>OTI Disclaimer:</b>	The molecular sequence of this clone aligns with the gene accession number as a point of reference only. However, individual transcript sequences of the same gene can differ through naturally occurring variations (e.g. polymorphisms), each with its own valid existence. This clone is substantially in agreement with the reference, but a complete review of all prevailing variants is recommended prior to use. <a href="#">More info</a>
<b>OTI Annotation:</b>	This clone was engineered to express the complete ORF with an expression tag. Expression varies depending on the nature of the gene.
<b>Components:</b>	The ORF clone is ion-exchange column purified and shipped in a 2D barcoded Matrix tube containing 10ug of transfection-ready, dried plasmid DNA (reconstitute with 100 ul of water).
<b>Reconstitution Method:</b>	<ol style="list-style-type: none"><li>1. Centrifuge at 5,000xg for 5min.</li><li>2. Carefully open the tube and add 100ul of sterile water to dissolve the DNA.</li><li>3. Close the tube and incubate for 10 minutes at room temperature.</li><li>4. Briefly vortex the tube and then do a quick spin (less than 5000xg) to concentrate the liquid at the bottom.</li><li>5. Store the suspended plasmid at -20°C. The DNA is stable for at least one year from date of shipping when stored at -20°C.</li></ol>
<b>RefSeq:</b>	<a href="#">NM_001202423.1</a> , <a href="#">NP_001189352.1</a>
<b>RefSeq Size:</b>	4029 bp
<b>RefSeq ORF:</b>	1734 bp
<b>Locus ID:</b>	81627
<b>UniProt ID:</b>	<a href="#">Q7Z2T5</a>
<b>Cytogenetics:</b>	1q25.3
<b>Gene Summary:</b>	This gene encodes a protein that has some similarity to N2,N2-dimethylguanosine tRNA methyltransferase from other organisms. Studies of the mouse ortholog have shown that this protein plays a role in motor coordination and exploratory behavior, and it may also be involved in modulating postnatal neuronal functions. Alternatively spliced transcripts have been identified for this gene. [provided by RefSeq, Jan 2011]