

Product datasheet for **RG232969**

ROD1 (PTBP3) (NM_001244898) Human Tagged ORF Clone

Product data:

Product Type:	Expression Plasmids
Product Name:	ROD1 (PTBP3) (NM_001244898) Human Tagged ORF Clone
Tag:	TurboGFP
Symbol:	PTBP3
Synonyms:	ROD1
Mammalian Cell Selection:	Neomycin
Vector:	pCMV6-AC-GFP (PS100010)
E. coli Selection:	Ampicillin (100 ug/mL)



[View online »](#)

ORF Nucleotide Sequence:

>RG232969 representing NM_001244898
 Red=Cloning site Blue=ORF Green=Tags(s)

TTTTGTAATACGACTCACTATAGGGCGGCCGGGAATTCGTCGACTGGATCCGGTACCGAGGAGATCTGCC
 GCC**CGGATCGCC**

ATGGACGCTTCCCCTCACCTTTCTCTCCCCAAGAACTTAATGAATTATCTGCCGTCGGGGATCTG
 ATGAGCTTCTTTCTTCTGGCATCATTAACGGACCTTTTACCATGAATAGTTCTACTCCTTACAGCTAA
 TGGGAATGACAGCAAGAAATTTAAACGAGATAGACCTCCCTGTTTCGCCTTCCCGTGTCTCCATCTCGA
 AAAATTCATGTGATGTCAACGAAGCAGAGATCATATCATTAGGTCTACCATTTGGCAAAGTAACTAATC
 TTTTGTGTTGAAAGGAAAAAGCCAGGCTTTCTTAGAAATGGCTTCTGAGGAAGCTGCCGTTACTATGGT
 GAATTATTACACTCCTATTACTCCTCACCTTCAAGCCAGCCTGTTTATATTTCAGTATTCCAATCACAGA
 GAACCTAAGACTGACAATCTACCTAATCAAGCTCGAGCCCAAGCTGCACTGCAGGCTGTCAGTCCGCTCC
 AATCAGGAAGCCTGGCCCTTTCTGGAGGTCCTTCCAATGAAGGCACAGTCTACCTGGGCAGAGCCCTGT
 GCTTCGAATAATTATTGAAAACCTTTTTACCCTGTTACCCTGGAAGTTCTTCATCAGATATTTTCTAAA
 TTTGGCACAGTCTGAAGATTATCACCTTTACAAGAATAATCAGTTTCAAGCCTTGCTTCAGTATGCTG
 ACCCAGTAAATGCACATTATGCCAAAATGGCTCTGGATGGCCAGAATATCTATAATGCATGCTGCACTCT
 GCGCATTGACTTCTCAAGCTCACACGCTTAATGTGAAATATAATAATGACAAAAGCAGAGACTTCACT
 CGCTTAGACCTTCTACTGGTATGGCCAGCCATCCCTTGAACCCCTATGGCTGCTGCTTTTGGTGAC
 CGGGTATAATTTCTTACCATATGCAGGGGCTGCTGGATTTGCCCCAGCCATTGGATTTCTCAAGCTAC
 AGGTCTATCAGTCCAGCTGTTCTGGAGCTCTGGTCTCTCACAAATCACCTCTTCTGCTGCTACTGGA
 AGGATGCCATTCTGGGGCTAGTGGTATACCAGGAAATCTGTTCTACTCGTCACAAATCTCAATCCTG
 ATCTTATCACACCACATGGGCTTTTTATCCTATTTGGAGTCTATGGTATGTACATCGAGTGAAGATTAT
 GTTTAATAAGAAAAGAAAATGCCTTGGTTTCAGATGGCGGATGCAAATCAAGCTCAGCTAGCAATGAACCAT
 CTAAGTGGTCAGAGACTTTATGGGAAAGTCTCGTGCTACACTGTCAAACATCAAGCAGTACAGCTTCT
 CTCGAGAGGGACAAGAAGACCAAGGCTGACTAAGGATTTAGCAATAGTCCCTTGCATCGCTTTAAAAA
 GCCGGGCTCTAAAACTTCCAGAATATCTTTCCACCATCAGCCACTCTGCATCTTTCCAACATCCCCCT
 TCTGTTACAGTGGATGATCTGAAGAACCTTTTCATAGAAGCTGGATGTTTCAGTGAAGGCTTTTAAATCT
 TTCAGAAAGATCGAAAATGGCGCTCATTCAATGGGATCTGTGGAAGAAGCAATTCAGGCCCTCATTGA
 GCTTCATAACCATGACCTTGAGAAAATCACACCTCAGAGTTTCCTTCTCAAAATCTACAATC

ACGCGTACGCGGCCGCTCGAG – GFP Tag – GTTTAA

Protein Sequence:

>RG232969 representing NM_001244898
 Red=Cloning site Green=Tags(s)

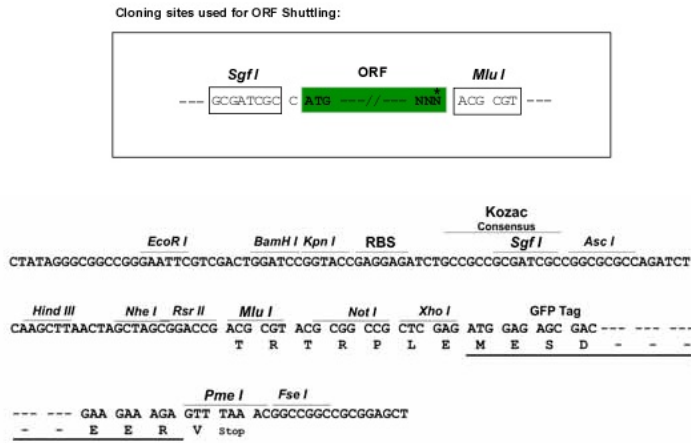
MDASPPFSLPKKLNELNLSARRGSDELLSSGIINGPFTMNSSTPSTANGNDSKKFKRDRPPCSPSRVHLHR
 KIPCDVTEAEIISLGLPFGKVTNLLMLKGKSQAFLEMASEEAAVTMVNYYPITPHLRSQPVIQYSNHR
 ELKTDNLPNQARAQAALQAVSAVQSGSLALSGGPSNEGTVLPGQSPVLRRIIENLFYPVTLEVLHQIFSK
 FGTVLKIITFTKNNQFQALLQYADPVNAHYAKMALDGQNIYNACCTLRIDFSKLTSLNVKYNNDKSRDFT
 RLDLPTGDGQPSLEPPMAAFAFGAPGIISSPYAGAAGFAPAIIGFPQATGLSVPVAVPGALGPLTITSSAVTG
 RMAIPGASGIPGNSVLLVTNLNPDILITPHGLFILFGVYGDVHRVKIMFNKKENALVQADANQAQLAMNH
 LSGQRLYGKVLRAATLSKHQAVQLPREGQEDQGLTKDFSNSPLHRFKKPGSKNFQNIFFPSATLHLSNIPP
 SVTVDDLKNIIEAGCSVKAFKFFQKDRKMALIQLSVEEAIQALIELHNHDLGENHHLRVFSKSTI

TRTRPLE – GFP Tag – V

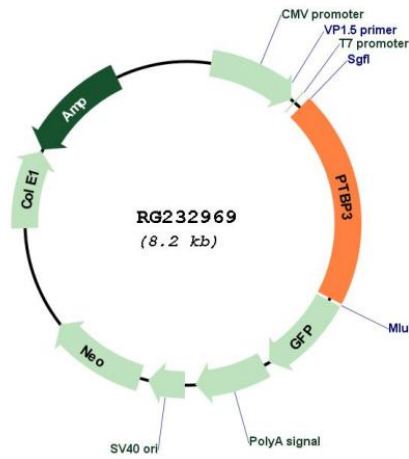
Restriction Sites:

Sgfl-MluI

Cloning Scheme:



Plasmid Map:



ACCN:	NM_001244898
ORF Size:	1674 bp
OTI Disclaimer:	The molecular sequence of this clone aligns with the gene accession number as a point of reference only. However, individual transcript sequences of the same gene can differ through naturally occurring variations (e.g. polymorphisms), each with its own valid existence. This clone is substantially in agreement with the reference, but a complete review of all prevailing variants is recommended prior to use. More info
OTI Annotation:	This clone was engineered to express the complete ORF with an expression tag. Expression varies depending on the nature of the gene.
Components:	The ORF clone is ion-exchange column purified and shipped in a 2D barcoded Matrix tube containing 10ug of transfection-ready, dried plasmid DNA (reconstitute with 100 ul of water).
Reconstitution Method:	<ol style="list-style-type: none">1. Centrifuge at 5,000xg for 5min.2. Carefully open the tube and add 100ul of sterile water to dissolve the DNA.3. Close the tube and incubate for 10 minutes at room temperature.4. Briefly vortex the tube and then do a quick spin (less than 5000xg) to concentrate the liquid at the bottom.5. Store the suspended plasmid at -20°C. The DNA is stable for at least one year from date of shipping when stored at -20°C.
RefSeq:	NM_001244898.1 , NP_001231827.1
RefSeq Size:	8009 bp
RefSeq ORF:	1677 bp
Locus ID:	9991
UniProt ID:	O95758
Cytogenetics:	9q32
Protein Families:	Druggable Genome
Gene Summary:	The protein encoded by this gene binds RNA and is a regulator of cell differentiation. The encoded protein preferentially binds to poly(G) and poly(U) sequences in vitro. Several transcript variants encoding different isoforms have been found for this gene. [provided by RefSeq, Oct 2011]