

Product datasheet for **RG232968**

KLHL23 (PHOSPHO2-KLHL23) (NM_001199290) Human Tagged ORF Clone

Product data:

Product Type:	Expression Plasmids
Product Name:	KLHL23 (PHOSPHO2-KLHL23) (NM_001199290) Human Tagged ORF Clone
Tag:	TurboGFP
Symbol:	PHOSPHO2-KLHL23
Mammalian Cell Selection:	Neomycin
Vector:	pCMV6-AC-GFP (PS100010)
E. coli Selection:	Ampicillin (100 ug/mL)



[View online »](#)

ORF Nucleotide Sequence:

>RG232968 representing NM_001199290
 Red=Cloning site Blue=ORF Green=Tags(s)

TTTTGTAATACGACTCACTATAGGGCGGCCGGAATTCGTCGACTGGATCCGGTACCGAGGAGATCTGCC
 GCC**CGGATCGCC**

ATGGCTCTAAAAGGACAAGAAGATTATATTTATCTTTTCAAGGATTCAACACATCCAGTGGATTTTCTGG
 ATGCATTCAGAACATTTTACTTGATGGATTATTTACTGATTAATCTTTCAGTGTCTTACAGGCATAAT
 TTTCCATTGTCCACCGAGCCGTTTTAGCTGCTTGCAGCAATTATTTTAAGGCAATGTTACAGCTGACATG
 AAAGAAAAATTTAAAAATAAAATAAACTCTCTGGCATCCACCATGATATTCTGGAAGGCCTTGAAATT
 ATGCATACACTTCCCAAATTGAAATAACTAAAAGAAATGTTCAAAGCCTGCTTGAGGCAGCGGATCTGCT
 ACAGTTCCTTTCAGTAAAGAAGGCTTGTGAGCGGTTTTTGGTAAGGCACTTGGATATTGATAATTGTATT
 GGAATGCACTCCTTTCAGAAATTCATGTGTGCCAGAAGTATGAGAAGGAATCTCGAAGAATTCTATGTT
 CAAAGTTAAGGAAGTGGCAACAAGAAGATTTCTGGAAATCAGCCTTGAAAAGTTTCTTTTATCTT
 GTCCAGAAAGAATCTCAGTGTGGAAAGAAGCTATCATAGAGCCAGTTATTAAGTGGACTGCTCAT
 GATGTAGAAAATCGAATTGAATGCCTCTATAATCTACTGAGCTATATCAACATTGATATAGATCCAGTGT
 ACTTAAAAACAGCCTTAGGCCTTCAAAGAAGCTGCCTGCTCACCGAAAAATAAGATCCGCTCCCTAATATA
 CAATGCCTTGAATCCCATGCATAAAGAGATTTCCAGAGGTCCACAGCCACAATGTATATAATTGGAGGC
 TATTACTGGCATCCTTTATCAGAGGTTACATATGGGATCCTTTGACAAATGTTTGGATTGAGGAGCAG
 AAATACCAGATTATACCAGGGAGAGCTATGGTGTACATGTTTAGGACCCAACATTTATGTAAGTGGGGG
 CTACAGGACGGATAACATAGAAGCTCTTGACACAGTGTGGATCTATAACAGTGAAGTGAATGGACA
 GAAGGTTTGCCAAATGCTCAATGCCAGGTATTACCACTGTGCAGTACCTTGGGTGGCTGTGTCTATGCTT
 TAGGTGGTTACAGAAAAGGGGCTCCAGCAGAAGAGGCTGAGTTCTATGATCCTTTAAAAGAGAAAATGGAT
 TCCTATTGCAAAACATGATTAAGGTGTGGGAAATGCTACTGCCTGTGTCTTACATGATGTTATCTACGTC
 ATTGGTGGCCACTGTGGCTACAGAGGAAGCTGCACCTATGACAAAAGTTCAGAGCTACAATCCGATATCA
 ACGAATGGAGCCTCATCACCTCCAGTCCACATCCAGAATATGGATTGTGCTCAGTTCGTTTAAAAATAA
 GCTCTATCTAGTCGGCGGACAACTACAATCACAGAATGCTATGACCCTGAACAAAATGAATGGAGAGAG
 ATAGCTCCATGATGGAAGGAGGATGGAGTCCGGTCCCGTCATCATGAATGGATGATTTATGTCAGT
 GAGGATACTCCTACTCAAAGGGAACGTATCTTCAGAGCATTGAGAAATATGATCCAGATCTTAATAAGT
 GAAAATAGTGGTAATCTTCCAGTGCCATCCGGTCTCATGGGTGTGTTGTGTGATAATGTC

ACGCGTACGCGGCCGCTCGAG – GFP Tag – GTTTAA

Protein Sequence:

>RG232968 representing NM_001199290
 Red=Cloning site Green=Tags(s)

MALKGQEDIYLFKSTHPVDFLDAFRTFYLDGLFTDITLQCPSGIIFHCHRAVLAACSNYFKAMFTADM
 KEKFKNKIKLSGIHHDILEGLVNYAYTSQIEITKRNVSLLLEAADLLQFLSVKKACERFLVRHLDIDNCI
 GMHSFAEFHVCPLEKESRRILCSKFKEVWQEEFLEISLEKFLFILSRKNLSVWKEEAIIEPVIKWTAH
 DVENRIECLYNLLSYINIDIDPVYKLTALGLQRSCLLTENKIRSLIYNALNPMHKEISQRSTATMYIIGG
 YYWHPLESEVHIWDPLTNVWIQGAIEIPDYTRESYGVTCCLGPNIIYVTGGYRTDNIEALDVTWVYNSSEDEWT
 EGLPMLNARYYHCAVTLGGCVYALGGYRKGAPEEAEFYDPLKEKWIPIANMIKGVGNATACVLHDVIYV
 IGGHCGYRGSCYDQVQSYNSDINEWSLITSSPHPEYGLCSVPFENKLYLVGGQTTITECYDPEQNEWRE
 IAPMMERRMECGAVIMNGCIYVTGGYSYSGTYLQSIKYPDLNKEIVGNLPSAMRSHGCVCVYNV

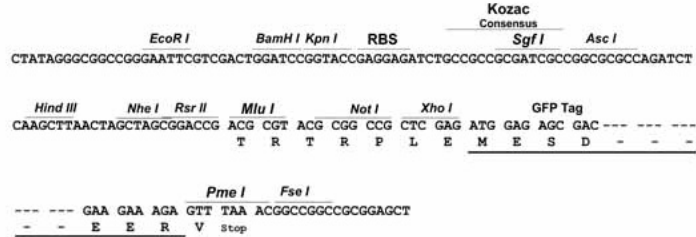
TRTRPLE – GFP Tag – V

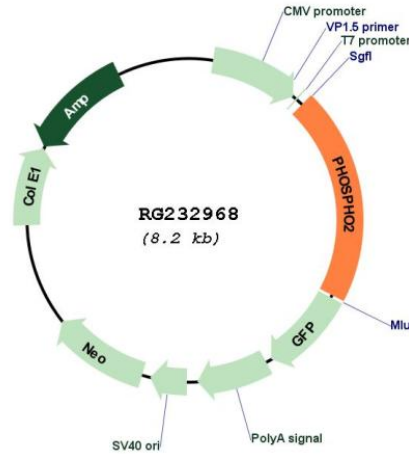
Restriction Sites:

Sgfl-MluI

Cloning Scheme:

Cloning sites used for ORF Shutting:



Plasmid Map:


ACCN: NM_001199290

ORF Size: 1674 bp

OTI Disclaimer: The molecular sequence of this clone aligns with the gene accession number as a point of reference only. However, individual transcript sequences of the same gene can differ through naturally occurring variations (e.g. polymorphisms), each with its own valid existence. This clone is substantially in agreement with the reference, but a complete review of all prevailing variants is recommended prior to use. [More info](#)

OTI Annotation: This clone was engineered to express the complete ORF with an expression tag. Expression varies depending on the nature of the gene.

Components: The ORF clone is ion-exchange column purified and shipped in a 2D barcoded Matrix tube containing 10ug of transfection-ready, dried plasmid DNA (reconstitute with 100 ul of water).

Reconstitution Method:

1. Centrifuge at 5,000xg for 5min.
2. Carefully open the tube and add 100ul of sterile water to dissolve the DNA.
3. Close the tube and incubate for 10 minutes at room temperature.
4. Briefly vortex the tube and then do a quick spin (less than 5000xg) to concentrate the liquid at the bottom.
5. Store the suspended plasmid at -20°C. The DNA is stable for at least one year from date of shipping when stored at -20°C.

RefSeq: [NM_001199290.3](#)

RefSeq Size: 4206 bp

RefSeq ORF: 1677 bp

Locus ID: 100526832

UniProt ID: [Q8NBE8](#)

Cytogenetics: 2q31.1

Gene Summary: This locus represents naturally occurring read-through transcription between the neighboring PHOSPHO2 (phosphatase, orphan 2) and KLHL23 (kelch-like 23) genes on chromosome 2. The read-through transcript includes only non-coding PHOSPHO2 exons, and thus encodes the KLHL23 protein. [provided by RefSeq, Dec 2010]