

Product datasheet for **RG232960**

PICALM (NM_001206947) Human Tagged ORF Clone

Product data:

Product Type:	Expression Plasmids
Product Name:	PICALM (NM_001206947) Human Tagged ORF Clone
Tag:	TurboGFP
Symbol:	PICALM
Synonyms:	CALM; CLTH; LAP
Mammalian Cell Selection:	Neomycin
Vector:	pCMV6-AC-GFP (PS100010)
E. coli Selection:	Ampicillin (100 ug/mL)



[View online »](#)

ORF Nucleotide Sequence:

>RG232960 representing NM_001206947
 Red=Cloning site Blue=ORF Green=Tags(s)

TTTTGTAATACGACTCACTATAGGGCGGCCGGAATTCGTCGACTGGATCCGGTACCGAGGAGATCTGCC
 GCC**CGCATCGCC**

ATGAATGTGAACATCCCACAGTTGGCAGACAGTTTATTTGAAAGAAGTACTAATAGTAGTTGGTGGTGG
 TCTTCAAATCTCTCATTACAACATCATTTGATGGTGTATGAAATGAGCGTTTTATTTCAGTATTTGGC
 TTCAAGAAACACGTTGTTAACTTAAGCAATTTTTGGATAAAAGTGGATTGCAAGGATATGACATGTCT
 ACATTTATTAGCGGTATAGTAGATATTTAAATGAGAAAGCAGTTTCATACAGACAAGTTCATTTGATT
 TCACAAAAGTGAAGAGAGGGGCTGATGGAGTTATGAGAACAATGAACACAGAAAACTCCTAAAACTGT
 ACCAATTATTGAGAATCAGATGGATGCCTTCTGATTTTAAATGTTAATAGCAATGAACCTACAAATGGG
 GTAATAAATGCTGCCTTCATGCTCCTGTTCAAAGATGCCATTAGACTGTTTGCAGCATACAATGAAGGAA
 TTATTAATTTGTTGAAAAATTTTTGATATGAAAAAGAACCAATGCAAAGAAGGCTTGACATCTATAA
 GAAGTTCTCAACTAGGATGACAAGAATCTCAGAGTTCTCAAAGTGCAGAGCAAGTTGGAATTGACAGA
 GGTGATATACCAGACCTTCACAGGCCCTTAGCAGTCTTCTTGATGCTTTGGAACAACATTTAGCTTCT
 TGGAAGGAAAGAAAAATCAAAGATTCTACAGCTGCAAGCAGGGCAACTACACTTTCCAATGCAGTGTCTT
 CCTGGCAAGCACTGGTCTATCTCTGACCAAAGTGGATGAAAGGGAAAAGCAGGCAGCATTAGAGGAAGAA
 CAGGCACGTTTGAAGCTTTAAAGGAACAGCGCTAAAAGAAGTTGCAAAGAAACCTCATACCTCTTTAA
 CAACTGCAGCCTCTCTGTATCCACCTCAGCAGGAGGGATAATGACTGCACCAGCCATTGACATATTTTC
 TACCCCTAGTTCTTCTAACAGCAGCATCAAAGCTGCCCAATGATCTGCTTGATTGCGAGCAGCAACTTTT
 CACCCATCTGTACATCCTATGTCAACTGCTTCTCAGGTAGCAAGTACATGGGAGGATTCACCTCTCTC
 CAGTTGCACAGCCACCCCTTCAGCTGGCCTTAAATGTTGACTTTGAATCTGTGTTTGAATAAATCTAC
 AAATGTTATTGTAGATTCTGGGGCTTTGATGAAGTGAAGTGGACTTCTCAAACCAACAGTGGCCTCTCAG
 AACCGAACCTTCTGTTGCCAACTCCACCTAGCAAGTTAGTATCTGATGACTTGGATTTCATCTTTAG
 CCAACCTTGTGGCAATCTTGGCATCGGAAATGGAACCACTAAGAATGATGTAATTTGGAGTCAACCAGG
 TGAAAAGAAGTTAACTGGGGATCTAACTGGCAACCAAAGGTTGCACCAACAACCGCTTGGAAATGCTGCA
 ACAATGGCACCCCTGTAATGGCCTATCCTGCTACTACCAACAGGCATGATAGGATATGGAAATCCTC
 CACAAATGGGAAGTGTCTGTAATGACGCAACCAACCTTAATATACAGCCAGCCTGTCATGAGACCTCC
 AAACCCCTTTGGCCCTGTATCAGGAGCACAGATACAGTTTATG

ACGCGTACGCGGCCGCTCGAG - GFP Tag - GTTTAA

Protein Sequence:

>RG232960 representing NM_001206947
 Red=Cloning site Green=Tags(s)

MNVNIPQLADSLFERTTNSSWVVFKSLITTHHLMVYGNERFIQYLASRNTLFNLSNFLDKSGLQGYDMS
 TFIIRYSRYLNEKAVSYRQVAFDFTKVKRGADGVMRTMTEKLLKTVPIIQNQMDALLDFNVNSNELTNG
 VINAAMFLLFKDAIRLFAAYNEGIINLLEKYFDMKKNQCKEGLDIYKFLTRMTRISEFLKVAEQVGIDR
 GDIPDLSQAPSSLLDALEQHLASLEGKIKDSTAASRATLSNAVSSLASTGLSLTKVDEREKQAALAAA
 QARLKALKEQRLKELAKKPHTSLTAAASPVSTASAGGIMTAPAIDIFSTPSSSNSTSKLPNDLLDLQPTF
 HPSVHPMSTASQVASTWGGFTSPVAQPHPSAGLNVDVFESVFNKSTNVIIVDSSGGFDELGGLLKPTVASQ
 NQNLPAKLPKSLVSDLDSSLANLVGNLIGNGTTKNDVNWSQPGEKLTGGSNWQPKVAPTTAWNAA
 TMAPPVMAYPATPTGMIGYIPPMGSPVMTQPTLIYSQPMRPPNPFGPVSGAQIQFM

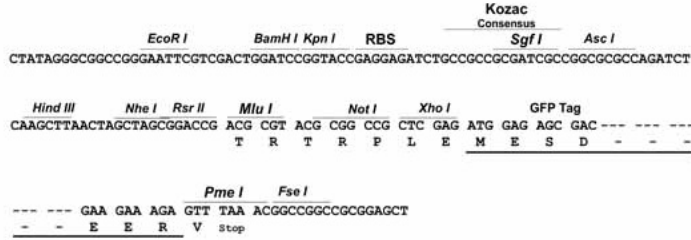
TRTRPLE - GFP Tag - V

Restriction Sites:

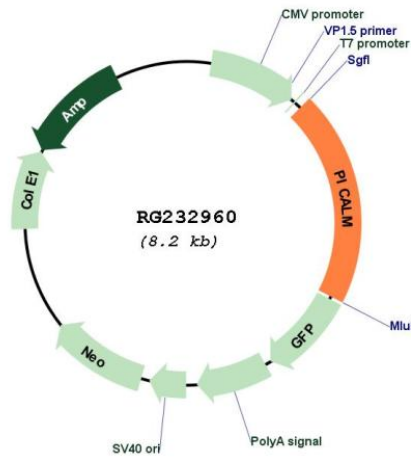
Sgfl-MluI

Cloning Scheme:

Cloning sites used for ORF Shutting:



Plasmid Map:



ACCN:	NM_001206947
ORF Size:	1653 bp
OTI Disclaimer:	The molecular sequence of this clone aligns with the gene accession number as a point of reference only. However, individual transcript sequences of the same gene can differ through naturally occurring variations (e.g. polymorphisms), each with its own valid existence. This clone is substantially in agreement with the reference, but a complete review of all prevailing variants is recommended prior to use. More info
OTI Annotation:	This clone was engineered to express the complete ORF with an expression tag. Expression varies depending on the nature of the gene.
Components:	The ORF clone is ion-exchange column purified and shipped in a 2D barcoded Matrix tube containing 10ug of transfection-ready, dried plasmid DNA (reconstitute with 100 ul of water).
Reconstitution Method:	<ol style="list-style-type: none">1. Centrifuge at 5,000xg for 5min.2. Carefully open the tube and add 100ul of sterile water to dissolve the DNA.3. Close the tube and incubate for 10 minutes at room temperature.4. Briefly vortex the tube and then do a quick spin (less than 5000xg) to concentrate the liquid at the bottom.5. Store the suspended plasmid at -20°C. The DNA is stable for at least one year from date of shipping when stored at -20°C.
RefSeq:	NM_001206947.2
RefSeq Size:	3734 bp
RefSeq ORF:	1656 bp
Locus ID:	8301
UniProt ID:	Q13492
Cytogenetics:	11q14.2
Protein Families:	Druggable Genome
Gene Summary:	This gene encodes a clathrin assembly protein, which recruits clathrin and adaptor protein complex 2 (AP2) to cell membranes at sites of coated-pit formation and clathrin-vesicle assembly. The protein may be required to determine the amount of membrane to be recycled, possibly by regulating the size of the clathrin cage. The protein is involved in AP2-dependent clathrin-mediated endocytosis at the neuromuscular junction. A chromosomal translocation t(10;11)(p13;q14) leading to the fusion of this gene and the MLLT10 gene is found in acute lymphoblastic leukemia, acute myeloid leukemia and malignant lymphomas. The polymorphisms of this gene are associated with the risk of Alzheimer disease. Multiple alternatively spliced transcript variants encoding different isoforms have been found for this gene. [provided by RefSeq, May 2011]