

Product datasheet for **RG232959**

SCFD1 (NM_001257376) Human Tagged ORF Clone

Product data:

Product Type:	Expression Plasmids
Product Name:	SCFD1 (NM_001257376) Human Tagged ORF Clone
Tag:	TurboGFP
Symbol:	SCFD1
Synonyms:	C14orf163; RA410; SLY1; SLY1P; STXBP1L2
Mammalian Cell Selection:	Neomycin
Vector:	pCMV6-AC-GFP (PS100010)
E. coli Selection:	Ampicillin (100 ug/mL)



[View online »](#)

ORF Nucleotide Sequence:

>RG232959 representing NM_001257376
 Red=Cloning site Blue=ORF Green=Tags(s)

TTTTGTAATACGACTCACTATAGGGCGGCCGGAATTCGTCGACTGGATCCGGTACCGAGGAGATCTGCC
 GCC**CGGATCGCC**

ATGCCAACTGAAGAAAATATTGACAGAATGTGCCAGGATCTTCGAAATCAACTATATGAATCATATTATT
 TAAATTTTATTTCTGCTATTTCAAGAAGTAACTGGAAGATATTGCAAATGCAGCGTTAGCAGCTAGTGC
 AGTAACACAAGTAGCCAAGGTTTTGACCAATATCTCAATTTTACTTTGGAAGATGATATGTTTGTA
 TTATGTAATCAAATAAGGAGCTTGTTTCATATCGTGCCATTAACAGGCCAGATACACAGACACGGAAA
 TGGAAACTGTTATGGACACTATAGTTGACAGCCTCTTCTGCTTTTTGTTACTCTGGGTGCTGTTCTAT
 AATCAGATGTTCAAGAGGAACAGCAGCAGAAATGGTAGCAGTGAACTAGACAAGAACTTCGAGAAAAT
 CTAAGAGATGCAAGAAACAGTCTTTTTACAGGTGATACACTTGGAGCTGGCCAATTCAGCTTCCAGAGGC
 CCTTATTAGTCTTGTGACAGAAACATAGATTTGGCAACTCCTTACATCATACTTGGACATATCAAGC
 ATTTGGTGCACGATGTACTGGATTTCCATTTAAACAGGGTTAATTTGGAAGATCTTCAGGAGTGGAAAAC
 TCTCCAGCTGGTCTAGACCAAAGAGAAAAACAAGAAGTCTTATGATTTAACTCCGGTTGATAAATTTT
 GGCAAAAACATAAAGGAAGTCCATTTCCAGAAAGTTGCAGAATCAGTTCAGCAAGAAGTACAGTCTTACAG
 AGCACAGGAAGATGAGGTCAAACGACTTAAAAGCATTATGGGACTAGAAGGGGAAGATGAAGGAGCCATA
 AGTATGCTTTCTGACAATACCGCTAAGCTAACATCAGCTGTTAGTTCTTTGCCAGAACTCCTTGAGAAAA
 AAAGACTTATTGATCTCCATACAAATGTTGCCACTGCTGTTTTAGAACATATAAAGGCAAGAAAATTGGA
 TGTATATTTGAATATGAAGAAAAAATAATGAGCAAACTACTCTGGATAAATCTTTCTAGATATAATA
 TCAGACCTGATGCAGGAACCTCAGAAGATAAAAAGAGTTGTTTCTTATCTATTATATAAGCACACAGC
 AAGCACCTTCTGAGGCTGATTTGGAGCAATATAAAAAAGCTTTAACTGATGCAGGATGCAACCTTAAATCC
 TTTACAATATATCAAACAGTGGAAAGCTTTTACCAAGATGGCCTCAGCTCCGGCCAGCTATGGCAGCACT
 ACCACTAAACCAATGGGTCTTTTATCACAGTCATGAATACAGGATCACAGTTTGTGATGGAAGGAGTGA
 AGAACCTGGTTTTGAAACAGCAAATCTACCTGTACTCGTATTTTGGACAATCTTATGGAGATGAAGTC
 AAACCCCGAAACTGATGACTATAGATATTTTATGCCAAAATGCTGCGGGCAATGACAGCTCAGTTCCC
 AGAAAATAAAAATCCATTCGAAGAGGCCATTGTTTTGTGGTGGGAGGAGGCAACTACATTGAATATCAGA
 ATCTTGTGACTACATAAAGGGGAAACAAGGCAACACATTTTATATGGCTGCAGTGAGCTTTTTAATGC
 TACACAGTTCATAAAACAGTTGTCACAACCTGGACAAAAG

ACGCGTACGCGGCCGCTCGAG – GFP Tag – GTTTAA

Protein Sequence:

>RG232959 representing NM_001257376
 Red=Cloning site Green=Tags(s)

MPTEENIDRMCDLRNQLYESYLNFI SAISRKLEDIANAALAASAVTQVAKVFDQYLNFTITLED DMFV
 LCNQNKELVSYRAINRPDI TDTEMETVMDTIVDSLFCFFVTLGAVPIIRCSRGAEMVAVKLDKLLREN
 LRDARNSLFTGDTL GAGQFSFQRP LLVLDNRIDLATPLHHTWYQALVHDVLD FHLNRVNLEESSGVEN
 SPAGARPKRKNKSYDLTPVDKFWQKHGSPFPEVAESVQQELESYRAQEDEVKRLK SIMGLEGEDEGAI
 SMLSDNTAKLTSVSSLPELLEKRLIDLHTNVATAVLEHIKARKLDVYFEYEEKIMSKTTLDKSLLDII
 SDPDAGTPEDKMRLFLIYYISTQQAPSEADLEQYKKALTDAGCNLNPLQYIKQWKAFTKMASAPASYGST
 TTKPMGLLSRVMTGSQFVMEGVKNLVLKQONLPVTRILDNLMEMKSNPETDDYRYFDPKMLRGNDSSVP
 RNKNPFQEAIVVVGGNVIEYQNLVDYIKGKQGHILYGCSELFNATQFIKQLSQLGQK

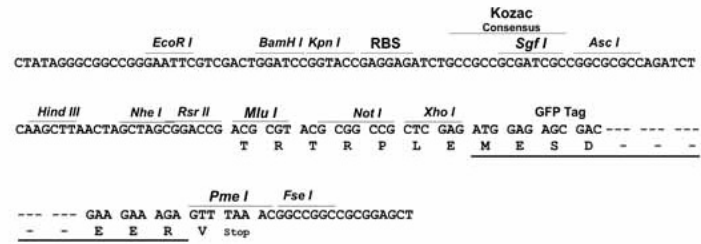
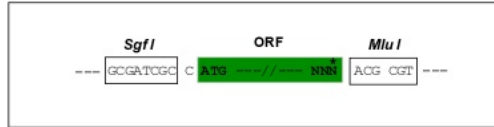
TRTRPLE – GFP Tag – V

Restriction Sites:

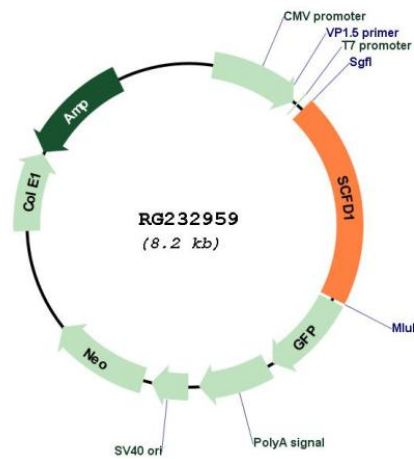
Sgfl-MluI

Cloning Scheme:

Cloning sites used for ORF Shutting:



Plasmid Map:



ACCN:	NM_001257376
ORF Size:	1650 bp
OTI Disclaimer:	The molecular sequence of this clone aligns with the gene accession number as a point of reference only. However, individual transcript sequences of the same gene can differ through naturally occurring variations (e.g. polymorphisms), each with its own valid existence. This clone is substantially in agreement with the reference, but a complete review of all prevailing variants is recommended prior to use. More info
OTI Annotation:	This clone was engineered to express the complete ORF with an expression tag. Expression varies depending on the nature of the gene.
Components:	The ORF clone is ion-exchange column purified and shipped in a 2D barcoded Matrix tube containing 10ug of transfection-ready, dried plasmid DNA (reconstitute with 100 ul of water).
Reconstitution Method:	<ol style="list-style-type: none">1. Centrifuge at 5,000xg for 5min.2. Carefully open the tube and add 100ul of sterile water to dissolve the DNA.3. Close the tube and incubate for 10 minutes at room temperature.4. Briefly vortex the tube and then do a quick spin (less than 5000xg) to concentrate the liquid at the bottom.5. Store the suspended plasmid at -20°C. The DNA is stable for at least one year from date of shipping when stored at -20°C.
RefSeq:	NM_001257376.1 , NP_001244305.1
RefSeq Size:	2071 bp
RefSeq ORF:	1653 bp
Locus ID:	23256
UniProt ID:	Q8WVM8
Cytogenetics:	14q12
Gene Summary:	Plays a role in SNARE-pin assembly and Golgi-to-ER retrograde transport via its interaction with COG4. Involved in vesicular transport between the endoplasmic reticulum and the Golgi (By similarity).[UniProtKB/Swiss-Prot Function]