

Product datasheet for **RG232954**

BS69 (ZMYND11) (NM_001202466) Human Tagged ORF Clone

Product data:

Product Type:	Expression Plasmids
Product Name:	BS69 (ZMYND11) (NM_001202466) Human Tagged ORF Clone
Tag:	TurboGFP
Symbol:	ZMYND11
Synonyms:	BRAM1; BS69; MRD30
Mammalian Cell Selection:	Neomycin
Vector:	pCMV6-AC-GFP (PS100010)
E. coli Selection:	Ampicillin (100 ug/mL)



[View online »](#)

ORF Nucleotide Sequence:

>RG232954 representing NM_001202466
 Red=Cloning site Blue=ORF Green=Tags(s)

TTTTGTAATACGACTCACTATAGGGCGGCCGGAATTCGTCGACTGGATCCGGTACCGAGGAGATCTGCC
 GCC**CGGATCGCC**

ATGGCACGTTTAAACAAAAGACGACAGGCGGATACAAAAGCTATCCAGCATCTTTGGCAGCCATTGAGA
 TTATACGGAACCAAGCAGATTGCCAACATTGACCGTATTACAAAGTATATGTCTCGAGTCCACGGTAT
 GCACCCTAAAGAGACCACCCGTCAGCTGAGCTTAGCTGTGAAAGATGGTCTTATTGTGAAACTCTAACA
 GTGGGCTGCAAAGGTTCAAAGCTGGTATTGAACAAGAAGGATATTGGTTGCCAGGAGATGAGATTAGCA
 TTAAGAAGAAGAATACAAACAAACAGGAGATGGGCACATACCTCAGATTCATTGTCTCCCGCATGAAGGA
 GAGGGCTATAGATCTTAATAAAAAGGGGAAGGACAATAAACACCCGATGTACAGGAGGCTGGTCACTCA
 GCTGTGGACGTTCCACCATTCAAGAGAAAGTGAATGAAGGAAATACCGAAGTTATGAAGATTCAAAG
 CTGATGCCAATTGCTTCTCCACAATACCGTGATTTTCTATGGAGACAGTGAAGCAAGCTGACATTGCGAG
 GATGCTATATAAAGACACATGTCATGAGCTGGATGAAGTGCAGCTTTGCAAGAATTGCTTTTACTTGTCA
 AATGCTCGTCTGACAACCTGGTTCTGTTATCCTTGTATACCTAATCATGAGCTGGTTTGGCTAAAATGA
 AAGTTTTGGTTTTGGCCAGCCAAAGTCATGCAGAAAGAAGACAATCAAGTCGACGTTCCGTTCTTTGG
 CCACCACCACAGAGGGCCTGGATTCTTCTGAAAACATTCAAGATATCACAGTCAACATTCATCGGCTG
 CACGTGAAGCGCAGTATGGGTTGGAAAAGGCCTGTGATGAGCTGGAGCTGCATCAGCGTTTCTACGAG
 AAGGGAGATTTTGGAAATCTAAGAATGAGGACCGAGGTGAGGAAGAGGCAGAATCCAGTATCTCTCCAC
 CAGTAATGAGCAGCTAAAGTCACTCAAGAACCAAGAGCAAAGAAAGGACGACGTAATCAAAGTGTGGAG
 CCCAAAAGGAAGAACAGAGCCTGAAACAGAAGCAGTAAGTTCTAGCCAGGAAATACCCACGATGCCTC
 AGCCCATCGAAAAGTCTCCGTGCAACTCAGACAAAGAAGTTAAGTGCCTCTTCACCAAGATGCTGCA
 TCGGAGCACCCAGACCACAAACGACGGCGTGTGTGAGAGCATGTGCCATGACAAATACACCAAGATCTTC
 AATGACTTCAAAGACCGATGAAGTCGGACCACAAGCGGAGACAGAGCGTGTGTCCGAGAAGCTCTGG
 AGAAGCTGCGTTCTGAAATGGAAGAAGAAAAGAGACAAGCTGTAATAAAGCTGTAGCCAACATGCAGGG
 TGAGATGGACAGAAAATGTAAGCAAGTAAAGGAAAAGTGAAGGAAGAATTTGTAGAAGAAATCAAGAAG
 CTGGCAACACAGCACAAGCAACTGATTTCTCAGACCAAGAAGAAGCAGTGGTGTACAACGTGAGGAGG
 AGGCCATGTACCACTGCTGCTGGAACACATCCTACTGCTCCATCAAGTCCAGCAGGAGCACTGGCACGG
 GGAGCACAAAGCGCACCTGCCCGCGAAAAGA

ACGCGTACGCGGCCGCTCGAG - GFP Tag - GTTTAA

Protein Sequence:

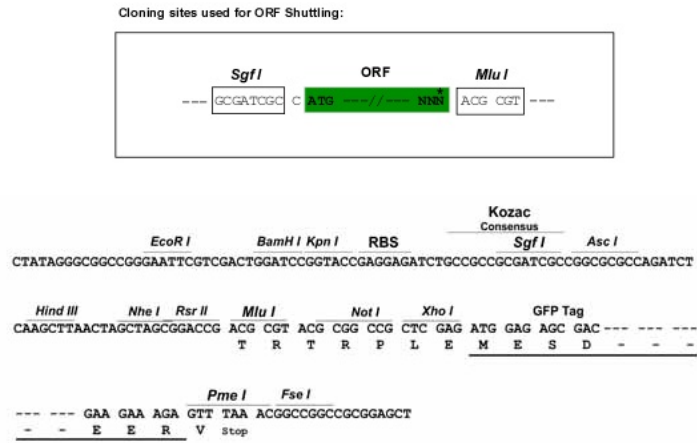
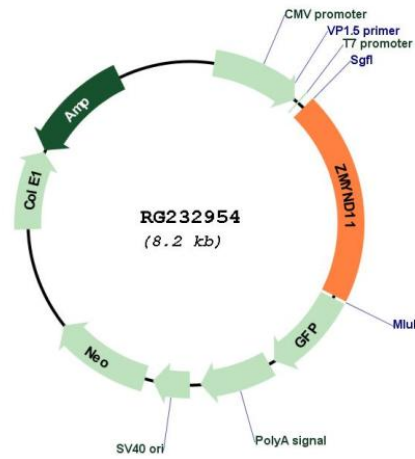
>RG232954 representing NM_001202466
 Red=Cloning site Green=Tags(s)

MARLTKRRQADTKAIQHLWAAIEIIRNQKQIANIDRITKYMSRVHGMHPKETTRQLSLAVKDGLIVETLT
 VGCKGSKAGIEQEGYWLPGEIISIKKNTNKQEMGTYLRFIVSRMKERAIDLNKKGKDNKHPMYRRLVHS
 AVDVPTIQEKVNEGKYRSYEEFKADAQLLLHNTVIFYGDSEQADIARMLYKDTCHELDELQLCKNCFYLS
 NARPDNWFYPCIPNHELWAKMKGFWFPAKVMQKEDNQVDVRFHGHHRRAWIPSENIQDITVNIHRL
 HVKRSMGWKKACDELELHQRFLREGRFWKSKNEDRGEAAESSISSTSNEQLKVTQEPRAKKGRNRQSV
 PKKEEPEPETEAVSSSQEIPMPQPIEKVSVSTQTKKLSASSPRMLHRSTQTTNDGVCQSMCHDKYTKIF
 NDFKDRMKSDHKRETERVREALEKLRSEMEEEKRQAVNKAVANMQGEMDRKCKQVKEKCKEEFVEEIKK
 LATQHKQLISQTKKKQWCYNCEEEAMYHCCWNTSYCSIKCQEHWAHEHKRTCRRKR

TRTRPLE - GFP Tag - V

Restriction Sites:

Sgfl-MluI

Cloning Scheme:

Plasmid Map:


ACCN:	NM_001202466
ORF Size:	1641 bp
OTI Disclaimer:	The molecular sequence of this clone aligns with the gene accession number as a point of reference only. However, individual transcript sequences of the same gene can differ through naturally occurring variations (e.g. polymorphisms), each with its own valid existence. This clone is substantially in agreement with the reference, but a complete review of all prevailing variants is recommended prior to use. More info
OTI Annotation:	This clone was engineered to express the complete ORF with an expression tag. Expression varies depending on the nature of the gene.
Components:	The ORF clone is ion-exchange column purified and shipped in a 2D barcoded Matrix tube containing 10ug of transfection-ready, dried plasmid DNA (reconstitute with 100 ul of water).
Reconstitution Method:	<ol style="list-style-type: none">1. Centrifuge at 5,000xg for 5min.2. Carefully open the tube and add 100ul of sterile water to dissolve the DNA.3. Close the tube and incubate for 10 minutes at room temperature.4. Briefly vortex the tube and then do a quick spin (less than 5000xg) to concentrate the liquid at the bottom.5. Store the suspended plasmid at -20°C. The DNA is stable for at least one year from date of shipping when stored at -20°C.
RefSeq:	NM_001202466.3
RefSeq Size:	4258 bp
RefSeq ORF:	1644 bp
Locus ID:	10771
Cytogenetics:	10p15.3
Protein Families:	Druggable Genome, Transcription Factors
Gene Summary:	The protein encoded by this gene was first identified by its ability to bind the adenovirus E1A protein. The protein localizes to the nucleus. It functions as a transcriptional repressor, and expression of E1A inhibits this repression. Alternatively spliced transcript variants encoding different isoforms have been identified. [provided by RefSeq, Jul 2008]