

Product datasheet for **RG232919**

NOX1 (NM_001271815) Human Tagged ORF Clone

Product data:

Product Type:	Expression Plasmids
Product Name:	NOX1 (NM_001271815) Human Tagged ORF Clone
Tag:	TurboGFP
Symbol:	NOX1
Synonyms:	GP91-2; MOX1; NOH-1; NOH1
Mammalian Cell Selection:	Neomycin
Vector:	pCMV6-AC-GFP (PS100010)
E. coli Selection:	Ampicillin (100 ug/mL)



[View online »](#)

ORF Nucleotide Sequence:

>RG232919 representing NM_001271815
 Red=Cloning site Blue=ORF Green=Tags(s)

TTTTGTAATACGACTCACTATAGGGCGGCCGGAATTCGTCGACTGGATCCGGTACCGAGGAGATCTGCC
 GCC**CGGATCGCC**

ATGGGAAACTGGGTGGTTAACCACTGGTTTTTCAGTTTTGTTCTGGTTGTTGGTTAGGGCTGAATGTTT
 TCCTGTTTGTGGATGCCTTCCTGAAATATGAGAAGGCCGACAAATACTACTACACAAGAAAAATCCTTGG
 GTTTTGCAGCCGCACACTGAGAAAAGCAATTGGATCACAACCTCACCTTCCACAAGCTGGTGGCCTATATG
 ATCTGCCTACATACAGCTATTCACATCATTGCACACCTGTTAACTTTGACTGCTATAGCAGAAGCCGAC
 AGGCCACAGATGGCTCCCTTGCCCTCAATCTCTCCAGCCTATCTCATGATGAGAAAAAGGGGGTTCTTG
 GCTAAATCCCATCCAGTCCCGAAACACGACAGTGGAGTATGTGACATTCACCAGCATTGCTGGTCTCACT
 GGAGTGATCATGACAATAGCCTTGATTCTCATGGTAACTCAGCTACTGAGTTCATCCGGAGGAGTTATT
 TTGAAGTCTTCTGGTATACTACCACCTTTTTATCTTCTATATCCTTGGCTTAGGGATTCACGGCATTGG
 TGGAAATTGTCGGGGTCAAACAGAGGAGAGCATGAATGAGAGTCATCCTCGCAAGTGTGCAGAGTCTTTT
 GAGATGTGGGATGATCGTGACTCCCACTGTAGGCGCCCTAAGTTTGAAGGGCATCCCCCTGAGTCTTGGA
 AGTGGATCCTTGACCCGGTCATTCTTTATATCTGTGAAAGGATCCTCCGGTTTTACCGCTCCCAGCAGAA
 GGTGTGATTACCAAGTTGTTATGCACCCATCCAAAGTTTTGGAATTGCAGATGAACAAGCGTGGCTTC
 AGCATGGAAGTGGGGCAGTATATCTTTGTTAATTGCCCTCAATCTCTCTCTGGAATGGCATCCTTTTA
 CTTTGACCTCTGCTCCAGAGGAAGATTTCTTCTCCATTATATCCGAGCAGCAGGGGACTGGACAGAAAA
 TCTCATAAGGGCTTTGAAACAACAATATCACCAATCCAGGATTGAAGTGGATGGTCCCTTTGGCACA
 GCCAGTGAAGATGTTTTCCAGTATGAAGTGGCTGTGCTGGTTGGAGCAGGAATTGGGGTCACCCCCTTTG
 CTTCTATCTTGAATCCATCTGGTACAAATCCAGTGTGCAGACCACAACCTCAAAAACAAAAAAGATCTA
 TTTCTACTGGATCTGCAGGGAGACAGGTGCCTTTTCTGGTTCAACAACCTGTTGACTTCCCTGGAACAG
 GAGATGGAGGAATTAGGCAAAGTGGGTTTTCTAAACTACCGTCTCTTCTCACCGGATGGACAGCAATA
 TTGTTGGTTCATGCAGCATTAAACTTTGACAAGGCCACTGACATCGTGACAGGTCTGAAACAGAAAACCTC
 CTTTGGGAGACCAATGTGGGACAATGAGTTTTCTACAATAGCTACCTCCCACCCCAAGTCTGTAGTGGGA
 GTTTTCTTATGTGGCCCTCGGACTTTGGCAAAGAGCCTGCGCAAATGCTGTACCAGATATCCAGTCTGG
 ATCCTAGAAAGGTTCAATTCTACTTCAACAAAGAAAAATTTT

ACGCGTACGCGGCCGCTCGAG - GFP Tag - GTTTAA

Protein Sequence:

>RG232919 representing NM_001271815
 Red=Cloning site Green=Tags(s)

MGNWVVNHWFSVLFLVVWGLNVFLFVDAFLKYEKADKYYYTRKILGFCSRTLRLKQLDHNLFHKLVAYM
 ICLHTAIHIIAHLNFDCYSRSRQATDGLASILSSLSHDEKKGGSWLNPIQSRNTTVEYVFTFSIAGLT
 GVIMTIALILMVTSAFERRSYFEVFWYTHHLFIFYILGLGIHGIGGIVRGQTEESMNESHPRKCAESF
 EMWDDRDSDHRRPKFEGHPPESWKWILAPVILYICERILRFYRSQQKVVITKVVMPHPSKVLLEQMNKRGF
 SMEVGGYIFVNCPSISLLEWHPFTLSAPEEDFFSIHIRAAGDWTENLIRAFEQQYSPPIRIEVDGPFGT
 ASEDVVFQYEVAVLVGAGIGVTPFASILKSIWYKFQCADHNLKTKKIYFYWICRETGAFSFWNLLTSLEQ
 EMEELGKVGFLNYRLFLTGWDSNIVGHAALNFDKATDIVTGLKQKTSFGRPMWDNEFSTIATSHPKSVVG
 VFLCGPRTLAKSLRKCHRYSSLDPRKVQFYFNKENF

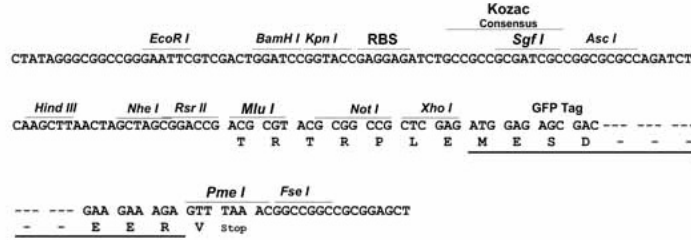
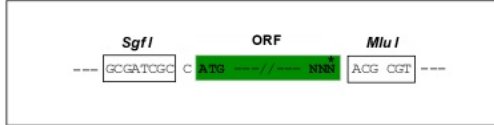
TRTRPLE - GFP Tag - V

Restriction Sites:

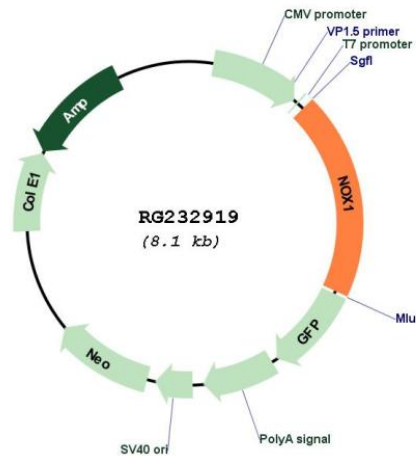
Sgfl-MluI

Cloning Scheme:

Cloning sites used for ORF Shutting:



Plasmid Map:



ACCN:	NM_001271815
ORF Size:	1581 bp
OTI Disclaimer:	<p>Due to the inherent nature of this plasmid, standard methods to replicate additional amounts of DNA in E. coli are highly likely to result in mutations and/or rearrangements. Therefore, OriGene does not guarantee the capability to replicate this plasmid DNA. Additional amounts of DNA can be purchased from OriGene with batch-specific, full-sequence verification at a reduced cost. Please contact our customer care team at custsupport@origene.com or by calling 301.340.3188 option 3 for pricing and delivery.</p> <p>The molecular sequence of this clone aligns with the gene accession number as a point of reference only. However, individual transcript sequences of the same gene can differ through naturally occurring variations (e.g. polymorphisms), each with its own valid existence. This clone is substantially in agreement with the reference, but a complete review of all prevailing variants is recommended prior to use. More info</p>
OTI Annotation:	This clone was engineered to express the complete ORF with an expression tag. Expression varies depending on the nature of the gene.
Components:	The ORF clone is ion-exchange column purified and shipped in a 2D barcoded Matrix tube containing 10ug of transfection-ready, dried plasmid DNA (reconstitute with 100 ul of water).
Reconstitution Method:	<ol style="list-style-type: none"> 1. Centrifuge at 5,000xg for 5min. 2. Carefully open the tube and add 100ul of sterile water to dissolve the DNA. 3. Close the tube and incubate for 10 minutes at room temperature. 4. Briefly vortex the tube and then do a quick spin (less than 5000xg) to concentrate the liquid at the bottom. 5. Store the suspended plasmid at -20°C. The DNA is stable for at least one year from date of shipping when stored at -20°C.
RefSeq:	NM_001271815.1 , NP_001258744.1
RefSeq Size:	2418 bp
RefSeq ORF:	1584 bp
Locus ID:	27035
UniProt ID:	Q9Y5S8
Cytogenetics:	Xq22.1
Protein Families:	Druggable Genome, Ion Channels: Other, Transmembrane
Protein Pathways:	Leukocyte transendothelial migration
Gene Summary:	This gene encodes a member of the NADPH oxidase family of enzymes responsible for the catalytic one-electron transfer of oxygen to generate superoxide or hydrogen peroxide. Alternatively spliced transcript variants encoding multiple isoforms have been observed for this gene. [provided by RefSeq, Nov 2012]