

Product datasheet for **RG232903**

BS69 (ZMYND11) (NM_001202465) Human Tagged ORF Clone

Product data:

Product Type:	Expression Plasmids
Product Name:	BS69 (ZMYND11) (NM_001202465) Human Tagged ORF Clone
Tag:	TurboGFP
Symbol:	ZMYND11
Synonyms:	BRAM1; BS69; MRD30
Mammalian Cell Selection:	Neomycin
Vector:	pCMV6-AC-GFP (PS100010)
E. coli Selection:	Ampicillin (100 ug/mL)



[View online »](#)

ORF Nucleotide Sequence:

>RG232903 representing NM_001202465
 Red=Cloning site Blue=ORF Green=Tags(s)

TTTTGTAATACGACTCACTATAGGGCGGCCGGAATTCGTCGACTGGATCCGGTACCGAGGAGATCTGCC
 GCC**GCGATCGCC**

ATGGCACGTTTAAACAAAAGACGACAGGCGGATACAAAAGCTATCCAGCATCTTTGGGCAGCCATTGAGA
 TTATACGGAACCAAGCAGATTGCCAACATTGACCGTATTACAAAGTATATGTCTCGAGTCCACGGTAT
 GCACCCTAAAGAGACCACCCGTCAGCTGAGCTTAGCTGTGAAAGATGGTCTTATTGTGAAAACCTAAACA
 GTGGGCTGCAAAGGTTCAAAGCTGGTATTGAACAAGAAGGATATTGGTTGCCAGGAGATGAGATTAGCA
 TTAAGAAGAAGAATACAAACAAACAGGAGATGGGCACATACCTCAGATTCATTGTCTCCCGCATGAAGGA
 GAGGAAAGTGAATGAAGGAAATACCGAAGTTATGAAGAGTTCAAAGCTGATGCCCAATTGCTTCTCCAC
 AATACCGTGATTTTCTATGGAGCAGACAGTGAGCAAGCTGACATTGCGAGGATGCTATATAAAGACACAT
 GTCATGAGCTGGATGAATGCAGCTTTGCAAGAATTGCTTTTACTTGTCAAATGCTGCTCCTGACAACCTG
 GTTCTGTTATCCTTGTATACCTAATCATGAGCTGGTTTGGGCTAAAATGAAAGGTTTTGGGTTTTGGCCA
 GCCAAAGTCATGCAGAAAAGACAATCAAGTCGACGTTTCGCTTCTTTGGCCACCACCACAGAGGGCCT
 GGATTCCTTCTGAAAACATTCAAGATATCACAGTCAACATTCATCGGCTGCACGTGAAGCGCAGTATGGG
 TTGAAAAAGGCCTGTGATGAGCTGGAGCTGCATCAGCGTTTCTACGAGAAGGGAGATTTTGAAATCT
 AAGAATGAGGACCGAGGTGAGGAAGAGGCAGAATCCAGTATCTCCTCCACCAGTAATGAGCAGCTAAGG
 TCACTCAAGAACCAAGAGCAAAGAAAGGACGACGTAATCAAAGTGTGGAGCCAAAAAGGAAGCAACAGA
 GCCTGAAACAGAAGCAGTAAGTTCTAGCCAGGAAATACCCACGATGCCTCAGCCCATCGAAAAGTCTCC
 GTGTCAACTCAGACAAAGAAGTTAAGTGCCTCTCACCAAGAATGCTGCATCGGAGCACCCAGACCACAA
 ACGACGGCGTGTGCAGAGCATGGCCATGACAAATACACCAAGATCTTCAATGACTTCAAAGACGGAT
 GAAGTCGGACCACAAGCGGGAGACAGAGCGTGTGTCCGAGAAGCTCTGGAGAAGCTGCGTTCTGAAATG
 GAAGAAGAAAAGAGACAAGCTGTAATAAAGCTGTAGCCAACATGCAGGGTGAGATGGACAGAAAATGTA
 AGCAAGTAAAGGAAAAGTGAAGGAAGAAATTTGTAGAAGAAATCAAGAAGCTGGCAACACAGCACAAAGCA
 ACTGATTTCTCAGACCAAGAAGAAGCAGTGGTGTACAACGTGAGGAGGAGGCCATGTACCCTGCTGC
 TGGAACACATCTACTGCTCCATCAAGTGCCAGCAGGAGCACTGGCACGCGGAGCACAAGCGCACCTGCC
 GCCGAAAAGA

ACGCGTACGCGGCCGCTCGAG - GFP Tag - GTTTAA

Protein Sequence:

>RG232903 representing NM_001202465
 Red=Cloning site Green=Tags(s)

MARLTKRRQADTKAIQHLWAAIEIIRNQKQIANIDRITKYMSRVHGMHPKETTQQLSLAVKDGLIVETLT
 VGCKGSKAGIEQEGYWLPGDEISIKKKNTNKQEMGTYLRFIVSRMKERKVNEGKYRSYEEFKADAQLLLH
 NTVIFYGADSEQADIARMLYKDTCHELDELQLCKNCFYLSNARPDNWFYPCIPNHELVAWMMKGFVFWP
 AKVMQKEDNQVDVRFVFGHHHQRWIPSENIQDITVNIHRLHVKRSMGWKKACDELELHQRFLREGRFWKS
 KNEDRGEAAAESSISSTSNEQLKVTQEPRAKKGRRNQSVPEPKKEPEPETEAVSSSQEIPTMPQPIEKVS
 VSTQTKKLSASSPRMLHRSTQTTNDGVCQSMCHDKYTKIFNDFKDRMSDHRKRETERVVREALEKLRSEM
 EEEKRQAVNKAVANMQGEMDRKCKQVKEKCKEEFVEEIKKLATQHKQLISQTKKKQWCYNCEEEAMYHCC
 WNTSYCSIKCQEQEHWHAEHKRTCRRKR

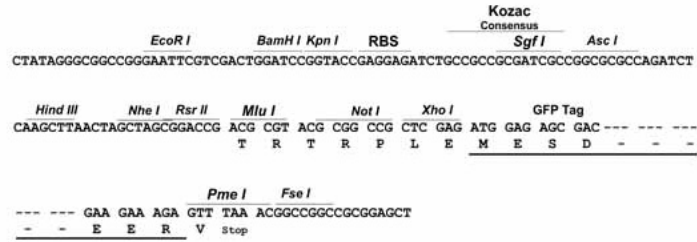
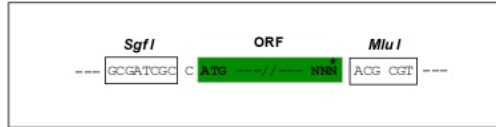
TRTRPLE - GFP Tag - V

Restriction Sites:

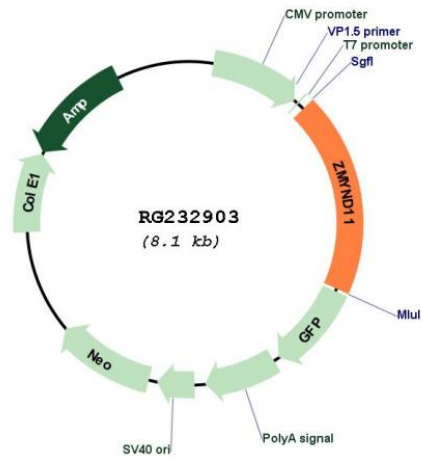
Sgfl-MluI

Cloning Scheme:

Cloning sites used for ORF Shutting:



Plasmid Map:



ACCN:	NM_001202465
ORF Size:	1551 bp
OTI Disclaimer:	The molecular sequence of this clone aligns with the gene accession number as a point of reference only. However, individual transcript sequences of the same gene can differ through naturally occurring variations (e.g. polymorphisms), each with its own valid existence. This clone is substantially in agreement with the reference, but a complete review of all prevailing variants is recommended prior to use. More info
OTI Annotation:	This clone was engineered to express the complete ORF with an expression tag. Expression varies depending on the nature of the gene.
Components:	The ORF clone is ion-exchange column purified and shipped in a 2D barcoded Matrix tube containing 10ug of transfection-ready, dried plasmid DNA (reconstitute with 100 ul of water).
Reconstitution Method:	<ol style="list-style-type: none">1. Centrifuge at 5,000xg for 5min.2. Carefully open the tube and add 100ul of sterile water to dissolve the DNA.3. Close the tube and incubate for 10 minutes at room temperature.4. Briefly vortex the tube and then do a quick spin (less than 5000xg) to concentrate the liquid at the bottom.5. Store the suspended plasmid at -20°C. The DNA is stable for at least one year from date of shipping when stored at -20°C.
RefSeq:	NM_001202465.3
RefSeq Size:	4168 bp
RefSeq ORF:	1554 bp
Locus ID:	10771
UniProt ID:	Q15326
Cytogenetics:	10p15.3
Protein Families:	Druggable Genome, Transcription Factors
Gene Summary:	The protein encoded by this gene was first identified by its ability to bind the adenovirus E1A protein. The protein localizes to the nucleus. It functions as a transcriptional repressor, and expression of E1A inhibits this repression. Alternatively spliced transcript variants encoding different isoforms have been identified. [provided by RefSeq, Jul 2008]