

## Product datasheet for **RG232880**

### ELF2 (NM\_001276457) Human Tagged ORF Clone

#### Product data:

Product Type:	Expression Plasmids
Product Name:	ELF2 (NM_001276457) Human Tagged ORF Clone
Tag:	TurboGFP
Symbol:	ELF2
Synonyms:	b; EU32; NERF; NERF-1A; NERF-1a; NERF-1B; NERF-2
Mammalian Cell Selection:	Neomycin
Vector:	pCMV6-AC-GFP (PS100010)
E. coli Selection:	Ampicillin (100 ug/mL)



[View online »](#)

**ORF Nucleotide Sequence:**

>RG232880 representing NM\_001276457  
 Red=Cloning site Blue=ORF Green=Tags(s)

TTTTGTAATACGACTCACTATAGGGCGGCCGGAATTCGTCGACTGGATCCGGTACCGAGGAGATCTGCC  
 GCC**CGGATCGCC**

ATGGCGACGTCTCTGCATGAGGGACCCACGAACCAGCTGGATCTGCTCATCCGGGCCGTGGAAGCATCAG  
 TTCACAGCAGTAATGCACACTGTACAGATAAGACAATTGAAGCTGCTGAAGCCCTGCTTCATATGGAATC  
 TCCTACCTGCTTGAGGGATTCAAGAAGTCTGTGGAAGTGTGGTCTCCTCTGTGTATCAACTCCAGAA  
 TTCATCCATGCTGCTATGAGGCCAGATGTCATTACAGAACTGTAGTGGAGGTGTCAACTGAAGAGTCTG  
 AACCCATGGATACCTCTCTATTCCAACATCACCAGATAGCCATGAACCAATGAAAAAGAAAAAGGAAA  
 CACAACCTATTTGTGGGAGTTTCTTTTAGATCTACTTCAAGATAAAAAATACTTGTCCCAGGTATATAAA  
 TGGACTCAGAGAGAAAAAGGCATATTCAAGCTGGTGGATTCAAAGGCTGTCTCTAAGCTTTGGGAAAGC  
 ATAGAACAACCAGACATGAACATGAAACCATGGGACGAGCTTTGAGATACTACTACCAAGGGGAAT  
 TCTTGCAAAGGTTGAAGGACAGAGGCTTGATATCAGTTCAGGATATGCCGAAAAACATAGTGGTCATA  
 GATGATGACAAAAGTGAACCTGTAATGAAGATTTAGCAGGAACACTGATGAAAAATCATTAGAACGAG  
 TGTCACTGTCTGCAGAAAGTCTCCTGAAAGCAGCATCCTCTGTTTCGACGTGGAAAAAATTCATCCCTAT  
 AAAGTGTCCAGAGCAGAGAAGGGTGTAGCTAGAGTTGTGAATATCACTTCCCCTGGGCACGATGCTTCA  
 TCCAGGCTCCTACTACCACTGCATCTGTGTCAGCAACAGCAGCTCCAAGGACAGTTCGTGTGGCAATGC  
 AGGTACCTGTTGTAATGACATCATTGGGTGAGAAAAATTTCAACTGTGGCAGTTCAGTCAGTTAATGCAGG  
 TGCACCATTAATAACCAGCACTAGTCCAACAACAGCGACCTCTCCAAAGGTAGTCATTGAGCAATCCCT  
 ACTGTGATGCCAGCTTCTACTGAAAAATGGAGACAAAATCACCATGCAGCCTGCCAAAATTTACCATCC  
 CAGCTACACAGCTTGCACAGTGTCAACTGCAGACAAAAGTCAAATCTGACTGGATCAGGAAGCATTAACT  
 TGTGGAAACCCATTGGCTGTGAGAGCACTTACCCTGTTTCAATAGCCCATGGTACACCTGTAATGAGA  
 CTATCAATGCCTACTCAGCAGGCATCTGCCAGACTCCTCCTCGAGTTATCAGTGCAGTCATAAAGGGGC  
 CAGAGGTTAAATCGAAGCAGTGGCAAAAAGCAAGAACATGATGTGAAAATTTGCAGCTAGTAGAAGA  
 AAAACCAGCAGATGGAATAAGACAGTGACCCACGTAGTGGTTGTCAGTGCAGCTTACGCTATTGCCCTT  
 CCTGTAATGAAAACAGAAGGACTAGTGACATGTGAGAAA

**ACGCGTACGCGGCCGCTCGAG** – GFP Tag – GTTTAA

**Protein Sequence:**

>RG232880 representing NM\_001276457  
 Red=Cloning site Green=Tags(s)

MATSLHEGPTNQLDLLIRAVEASVHSSNAHCTDKTIEAAEALLHMESPTCLRDSRSPVEVFVPPCVSTPE  
 FIHAAMRPDVITETVVEVSTEESEPMDSPIPTSPDSHEPMKKKKGNNTYLWFLDLLQDKNTPRYIK  
 WTQREKGIKFLVDSKAVSKLWGHKKNKPDMMNYETMGRALRYYYQRGILAKVEGQRLVYQFKDMPKNIVVI  
 DDDKSETCNEDLAGTTDEKSLERVLSAESLLKAASSVRSKNSPINCRAEKGVARVNNITSPGHAS  
 SRSPTTTASVSATAAPRTVRVAMQVPVMTSLGQKISTVAVQSVNAGAPLITSTSPPTTATSPKVVIQTIP  
 TVMPASTENGDKITMQPAKIITIPATQLAQCLQTKSNLTGSGSINIVGTPLAVRALTPVIAHGTPVMR  
 LSMPTQQASGQTPPRVISAIVIKGPEVKSEAVAKKQEHVKTLLQVEEKPADGNKTVTHVVVVSAPSAIAL  
 PVTMKTEGLVTCCK

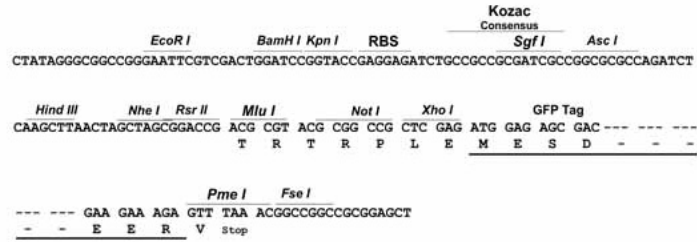
**TRTRPLE** – GFP Tag – V

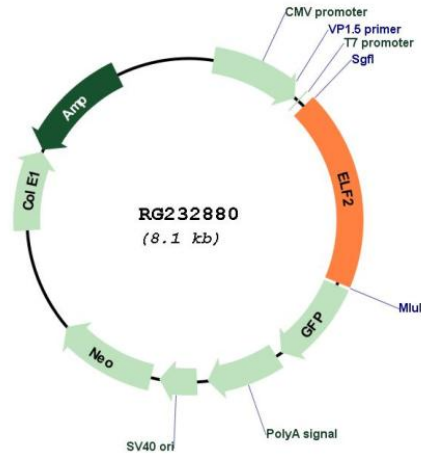
**Restriction Sites:**

Sgfl-MluI

Cloning Scheme:

Cloning sites used for ORF Shutting:



**Plasmid Map:**


**ACCN:** NM\_001276457

**ORF Size:** 1512 bp

**OTI Disclaimer:** The molecular sequence of this clone aligns with the gene accession number as a point of reference only. However, individual transcript sequences of the same gene can differ through naturally occurring variations (e.g. polymorphisms), each with its own valid existence. This clone is substantially in agreement with the reference, but a complete review of all prevailing variants is recommended prior to use. [More info](#)

**OTI Annotation:** This clone was engineered to express the complete ORF with an expression tag. Expression varies depending on the nature of the gene.

**Components:** The ORF clone is ion-exchange column purified and shipped in a 2D barcoded Matrix tube containing 10ug of transfection-ready, dried plasmid DNA (reconstitute with 100 ul of water).

<b>Reconstitution Method:</b>	<ol style="list-style-type: none"><li>1. Centrifuge at 5,000xg for 5min.</li><li>2. Carefully open the tube and add 100ul of sterile water to dissolve the DNA.</li><li>3. Close the tube and incubate for 10 minutes at room temperature.</li><li>4. Briefly vortex the tube and then do a quick spin (less than 5000xg) to concentrate the liquid at the bottom.</li><li>5. Store the suspended plasmid at -20°C. The DNA is stable for at least one year from date of shipping when stored at -20°C.</li></ol>
<b>RefSeq:</b>	<a href="#">NM_001276457.1</a> , <a href="#">NP_001263386.1</a>
<b>RefSeq Size:</b>	3005 bp
<b>RefSeq ORF:</b>	1515 bp
<b>Locus ID:</b>	1998
<b>UniProt ID:</b>	<a href="#">Q15723</a>
<b>Cytogenetics:</b>	4q31.1
<b>Protein Families:</b>	Druggable Genome, Transcription Factors
<b>Gene Summary:</b>	Isoform 1 transcriptionally activates the LYN and BLK promoters and acts synergistically with RUNX1 to transactivate the BLK promoter.[UniProtKB/Swiss-Prot Function]