

## Product datasheet for **RG232866**

### INT11 (CPSF3L) (NM\_001256463) Human Tagged ORF Clone

#### Product data:

Product Type:	Expression Plasmids
Product Name:	INT11 (CPSF3L) (NM_001256463) Human Tagged ORF Clone
Tag:	TurboGFP
Symbol:	INTS11
Synonyms:	CPSF3L; CPSF73L; INT11; RC-68; RC68
Mammalian Cell Selection:	Neomycin
Vector:	pCMV6-AC-GFP (PS100010)
E. coli Selection:	Ampicillin (100 ug/mL)



[View online »](#)

**ORF Nucleotide Sequence:**

>RG232866 representing NM\_001256463  
 Red=Cloning site Blue=ORF Green=Tags(s)

TTTTGTAATACGACTCACTATAGGGCGGCCGGAATTCGTCGACTGGATCCGGTACCGAGGAGATCTGCC  
 GCC**CGGATCGCC**

ATGCCTGAGATCAGAGTCACGCCCTTGGGGCCGCCAGGACGTGGGCCGAAGCTGCATCCTGGTCTCCA  
 TTGCGGGCAAGAATGTCATGCTGGACTGTGGAATGCACATGGGCTTCAATGACGACGTAGATGATGAGCT  
 GGAGATCAAGGCCTACTATGCAGGCCACGTGCTGGGGCAGCCATGTTCCAGATTAAGTGGGCTCAGAG  
 TCTGTGGTCTACACGGGTGATTATAACATGACCCAGACCGACACTTAGGAGCTGCCTGGATTGACAAGT  
 GCCGCCCAACCTGCTCATCACAGAGTCCACGTACGCCACGACCATCCGTGACTCCAAGCGCTGCCGGGA  
 GCGAGACTTCTGAAGAAAGTCCACGAGACCGTGGAGCGTGGTGGGAAGGTGCTGATACCTGTGTTCCGG  
 CTGGGCCGCGCCAGGAGCTCTGCATCCTCTGGAGACCTTCTGGGAGCGCATGAACCTGAAGGTGCCCA  
 TCTACTTCTCACGGGGTGACCGAGAAGGCCAACCTACTACAAGCTGTTATCCCCTGGACCAACCA  
 GAAGATCCGCAAGACTTTCGTGCAGAGGAACATGTTTGTGTTCAAGCACATCAAGGCCTTCGACCGGGCT  
 TTTGCTGACAACCCAGGACCGATGGTTGTGTTGCCACGCCAGGAATGCTGCACGCTGGGACGTCCCTGC  
 AGATCTTCGGAAATGGGCCGGAACGAAAAGAACATGGTCATCATGCCCGGCTACTGCGTGCAGGGCAC  
 CGTCGGCCACAAGATCCTCAGCGGGCAGCGGAAGCTCGAGATGGAGGGCGCGCAGGTGCTGGAGGTCAAG  
 ATGCAGGTGGAGTACATGTCATTAGCGCACACGCGGACGCCAAGGGCATCATGCAGCTGGTGGCCAGG  
 CAGAGCCGGAGAGCGTGTGCTGGTGCATGGCGAGGCCAAGAAGTGGAGTTCCTGAAGCAGAAGATCGA  
 GCAGGAGCTCCGGTCACTGCTACATGCCGCCAATGGCGAGACGGTACGCTGCCACAAGCCCCAGC  
 ATCCCCGTAGGCATCTCGCTGGGGCTGCTGAAGCGGGAGATGGCGAGGGGCTGCTCCCTGAGGCCAAGA  
 AGCCTCGGCTCCTGCACGGCACCTGATCATGAAGGACAGCAACTTCGGCTGGTGTCTCAGAGCAAGC  
 CCTCAAAGAGCTGGGTCTGGCTGAGCACAGCTGCGCTTACCTGCCGCTGCACCTGCATGACACACGC  
 AAGGAGCAGGAGACGGCATTGCGCTCTACAGCCACCTCAAGAGCGTCTGAAGGACCACTGTGTGCAGC  
 ACCTCCCAGACGGCTCTGTGACTGTGGAGTCCGTCTCCTCCAGGCCGCCGCCCTTCTGAGGACCCAGG  
 CACCAAGGTGCTGCTGCTCCTGGACCTACCAGGACGAGGAGCTGGGGAGCTTCTCACATCTCTGCTG  
 AAGAAGGGCTCCCCAGGCCCCAGC

**ACGCGTACGCGGCCGCTCGAG** – GFP Tag – GTTTAA

**Protein Sequence:**

>RG232866 representing NM\_001256463  
 Red=Cloning site Green=Tags(s)

MPEIRVTPLGAGQDVGRSCILVSIAGKNVMLDCGMHMGFNDDVDELEIKAYYAGHVLGAAMFQIKVNSE  
 SVVYTGDNMTPDRHLGAAWIDKCRPNLLITESTYATTIRDSKRRCRERDFLKKVHETVERGGKVLIPVFA  
 LGRAQELCILLETFWERMNLKVPYIFSTGLTEKANHYKLFIPWTNQKIRKTFVQRNMFQKHIAFDRA  
 FADNPGPMVVFATPGMLHAGQSLQIFRWAGNEKNMVIMPGYCVQGTGVGHKILSGQRKLEMEGRQVLEVK  
 MQVEYMSFSAHADAKGIMQLVGQAEPESVLLVHGEAKKMEFLKQKIEQELRVNCPANGETVTLPSPS  
 IPVGISLGLLKREMAQGLLPEAKKPRLLHGTLIMKDSNFRVLSSEQALKELGLAEHQLRFTCRVHLHDTR  
 KEQETALRVYSHLKSVLKDHCVQHLPDGSVTVESVLLQAAAPSEDPGTVKLLVSWTYQDEELGSFLTSL  
 KKGLPQAPS

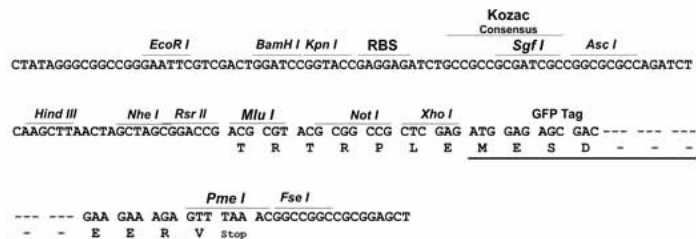
**TRTRPLE** – GFP Tag – V

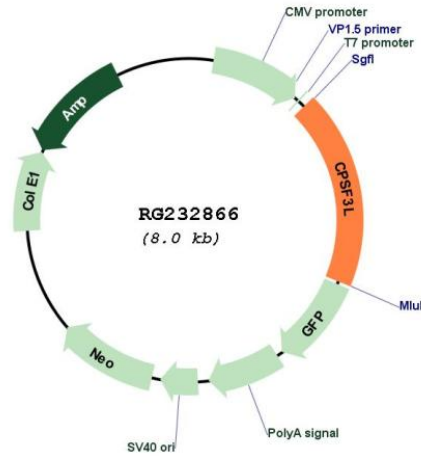
**Restriction Sites:**

Sgfl-MluI

Cloning Scheme:

Cloning sites used for ORF Shutting:



**Plasmid Map:**


**ACCN:** NM\_001256463

**ORF Size:** 1497 bp

**OTI Disclaimer:** The molecular sequence of this clone aligns with the gene accession number as a point of reference only. However, individual transcript sequences of the same gene can differ through naturally occurring variations (e.g. polymorphisms), each with its own valid existence. This clone is substantially in agreement with the reference, but a complete review of all prevailing variants is recommended prior to use. [More info](#)

**OTI Annotation:** This clone was engineered to express the complete ORF with an expression tag. Expression varies depending on the nature of the gene.

**Components:** The ORF clone is ion-exchange column purified and shipped in a 2D barcoded Matrix tube containing 10ug of transfection-ready, dried plasmid DNA (reconstitute with 100 ul of water).

**Reconstitution Method:**

1. Centrifuge at 5,000xg for 5min.
2. Carefully open the tube and add 100ul of sterile water to dissolve the DNA.
3. Close the tube and incubate for 10 minutes at room temperature.
4. Briefly vortex the tube and then do a quick spin (less than 5000xg) to concentrate the liquid at the bottom.
5. Store the suspended plasmid at -20°C. The DNA is stable for at least one year from date of shipping when stored at -20°C.

**RefSeq:** [NM\\_001256463.2](#)

**RefSeq Size:** 1865 bp

**RefSeq ORF:** 1500 bp

**Locus ID:** 54973

**UniProt ID:** [Q5TA45](#)

**Cytogenetics:** 1p36.33

**Gene Summary:** The Integrator complex contains at least 12 subunits and associates with the C-terminal domain of RNA polymerase II large subunit (POLR2A; MIM 180660) and mediates the 3-prime end processing of small nuclear RNAs U1 (RNU1; MIM 180680) and U2 (RNU2; MIM 180690). INTS11, or CPSF3L, is the catalytic subunit of the Integrator complex (Baillat et al., 2005 [PubMed 16239144]).[supplied by OMIM, Mar 2008]