

## Product datasheet for **RG232852**

### PIGV (NM\_001202554) Human Tagged ORF Clone

#### Product data:

Product Type:	Expression Plasmids
Product Name:	PIGV (NM_001202554) Human Tagged ORF Clone
Tag:	TurboGFP
Symbol:	PIGV
Synonyms:	GPI-MT-II; HPMRS1; PIG-V
Mammalian Cell Selection:	Neomycin
Vector:	pCMV6-AC-GFP (PS100010)
E. coli Selection:	Ampicillin (100 ug/mL)



[View online »](#)

**ORF Nucleotide Sequence:**

>RG232852 representing NM\_001202554  
 Red=Cloning site Blue=ORF Green=Tags(s)

TTTTGTAATACGACTCACTATAGGGCGGCCGGAATTCGTCGACTGGATCCGGTACCGAGGAGATCTGCC  
 GCC**CGCATCGCC**

ATGTGGCCCCAGGACCCATCCCGAAGGAGGTGCTGAGGTTTGCAGTCAGCTGCCGTATCCTGACTCTGA  
 TGCTGCAGGCCCTCTCAATGCCATCATCCAGATCACCATGCAGAAGCCTTCTCTCCTCGCCTGGC  
 CCCCTCAGGCTTTGTGGACCAACTCGTGAAGGTCTTCTGGGCGCCTGTCTCACTGGGATGCTGAACAC  
 TTCTTGTTCAATTGCTGAGCATGGCTACCTGTATGAGCACAACCTTGCCTTCTTCTGGTTTCCCCTGG  
 CCCTGCTGGTGGGACTGAACTGTTGAGACCTTACGGGGTTACTGAGTCTACGCAGTTGCCTGCTGAT  
 TTCGGTAGCATCACTCAATTTCTGTTCTTCATGTTGGCTGCAGTTGCACCTTCATGACCTGGGTTGCTG  
 GTTTTGCACTGTCCCACCAGTCTTTTATGCAGCTCTGCTTTTCTGTCTCAGCCCTGCCAATGTCTTCC  
 TGGCAGCTGGTTACTCAGAAGCTTTGTTGCCCTCCTGACATTCAGTCCATGGGCAGCTGGAGAGGGG  
 CCGAGTCTGGACTAGTGTACTCCTTTTGCCTTTGCCACTGGGGTACGCTCCAACGGGCTGGTCAGTGT  
 GGCTTCTCATGATTCTCAATGCCAAGGCTTTTTCTCTTCTAACGATGCTGAATCCTCTGAGACAGC  
 TCTTTAAGCTGATGGCCTCTCTGTTTCTGTGCGGTGTTCACTTGGCCTTCCCTTTGCCCTCTTTCAGTA  
 TTATGCCTACACCAATTCTGTCTGCCAGGCTCAGCCGCCCCATTCTGAGCCTTTGGTACAGTTAGCT  
 GTAGACAAGGGCTACCGATTGCAGAGGAAATGAACCGCCTTGGTGCTTCTGGGATGTTCCACTAATAT  
 ACAGCTATATCCAGGATGTCTACTGGAATGTTGGCTTTTTGAAATACTATGAGCTCAAGCAGGTGCCAA  
 TTTTCTACTGGCTGCACCAGTGGCTATACTGGTTGCCGGCAACTTGGACATACGTGACCACTCACCT  
 TGGCTCTGCCTTACACTTGGCTGCAAAGGAGCAAGAACAATAAGACCCTAGAGAAGCCCGATCTGGAT  
 TCCTCAGTCTCAGGTGTTTGTGTACGTGGTCCACGCTGCAGTGTCTGCTGTTTGGAGGCTGTGCAT  
 GCATGTTCAAGTTCTCACAGGTTTTTGGGCTCCTCCACTCCTATTATGTACTGGTTTCCAGCTCACTTG  
 CTTCAAGATCAAGAGCCGCTGTTGAGATCCTTAAAGACTGTGCCTTGGAAAGCCTTTCAGAGGACTCCC  
 CACCAGGACAAAAGTCCCAGAAATCCTATCATGGGACTTTTGTATCACTGGAAAACCTGTTCTCCAGT  
 CACACGATACATTCTAGGCTACTTCTGACTTACTGGCTCCTGGGACTACTCCTACATTGCAACTTCCTG  
 CCTTGGACA

**ACGCGTACGCGGCCGCTCGAG** – GFP Tag – GTTTAA

**Protein Sequence:**

>RG232852 representing NM\_001202554  
 Red=Cloning site Green=Tags(s)

MWPQDPSRKEVLRFAVSCRILTMLQALFNAIIPDHAEAFSPRLAPSGFVDQLVEGLLGGLSHWDAEH  
 FLFIAEHGYLYEHNFAFFPGFPLALLVGTLLRPLRGLLSLRSCLLISVASLNFLFFMLAAVALHDLGCL  
 VLHCPHQSFYAALLFCLSPANVFLAAGYSEALFALLTFSAMQLERGRVWTSVLLFAFATGVRNGLVSV  
 GFLMHSQCQGFSSLTMLNPLRQLFKLMASLFLSVFTLGLPFALFQYYAYTQFCLPGSARPIPEPLVQLA  
 VDKGYRIAEGNEPPWCFWDVPLIYSYIQDVYWNVGFLLKYELKQVPNFLLAAPVAILVAVATWTYVTTTHP  
 WLCLTLGLQRSKNNKTLEKPDGLFSPQVFVYVHAAVLLLFGLCMHVQVLRFLGSSTPIMYWFP AHL  
 LQDQEPLLRSLKTVPWKPLAEDSPPGQKVPNRPIMGLLYHWKTCSPVTRYILGYFLTYWLLGLLLHCNFL  
 PWT

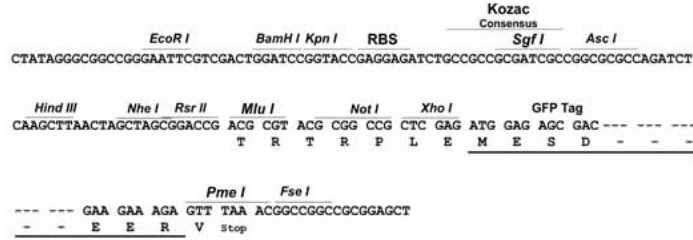
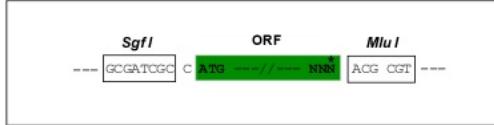
**TRTRPLE** – GFP Tag – V

**Restriction Sites:**

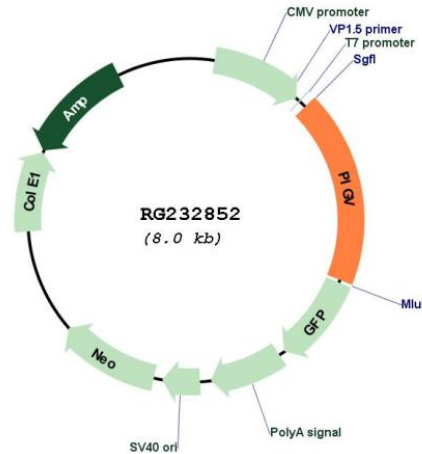
Sgfl-MluI

Cloning Scheme:

Cloning sites used for ORF Shutting:



Plasmid Map:



ACCN: NM\_001202554

ORF Size: 1479 bp

OTI Disclaimer: The molecular sequence of this clone aligns with the gene accession number as a point of reference only. However, individual transcript sequences of the same gene can differ through naturally occurring variations (e.g. polymorphisms), each with its own valid existence. This clone is substantially in agreement with the reference, but a complete review of all prevailing variants is recommended prior to use. [More info](#)

OTI Annotation: This clone was engineered to express the complete ORF with an expression tag. Expression varies depending on the nature of the gene.

Components: The ORF clone is ion-exchange column purified and shipped in a 2D barcoded Matrix tube containing 10ug of transfection-ready, dried plasmid DNA (reconstitute with 100 ul of water).

**Reconstitution Method:**

1. Centrifuge at 5,000xg for 5min.
2. Carefully open the tube and add 100ul of sterile water to dissolve the DNA.
3. Close the tube and incubate for 10 minutes at room temperature.
4. Briefly vortex the tube and then do a quick spin (less than 5000xg) to concentrate the liquid at the bottom.
5. Store the suspended plasmid at -20°C. The DNA is stable for at least one year from date of shipping when stored at -20°C.

**RefSeq:** [NM\\_001202554.2](#)

**RefSeq Size:** 2750 bp

**RefSeq ORF:** 1482 bp

**Locus ID:** 55650

**UniProt ID:** [Q9NUD9](#)

**Cytogenetics:** 1p36.11

**Protein Families:** Transmembrane

**Protein Pathways:** Glycosylphosphatidylinositol(GPI)-anchor biosynthesis, Metabolic pathways

**Gene Summary:** This gene encodes a mannosyltransferase enzyme involved in the biosynthesis of glycosylphosphatidylinositol (GPI). GPI is a complex glycolipid that functions as a membrane anchor for many proteins and plays a role in multiple cellular processes including protein sorting and signal transduction. The encoded protein is localized to the endoplasmic reticulum and transfers the second mannose to the GPI backbone. Mutations in this gene are associated with hyperphosphatasia cognitive disability syndrome. Alternatively spliced transcript variants have been observed for this gene. [provided by RefSeq, Feb 2011]